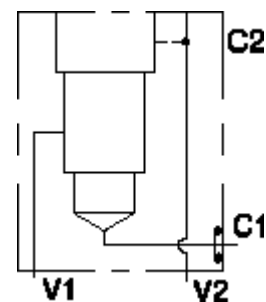


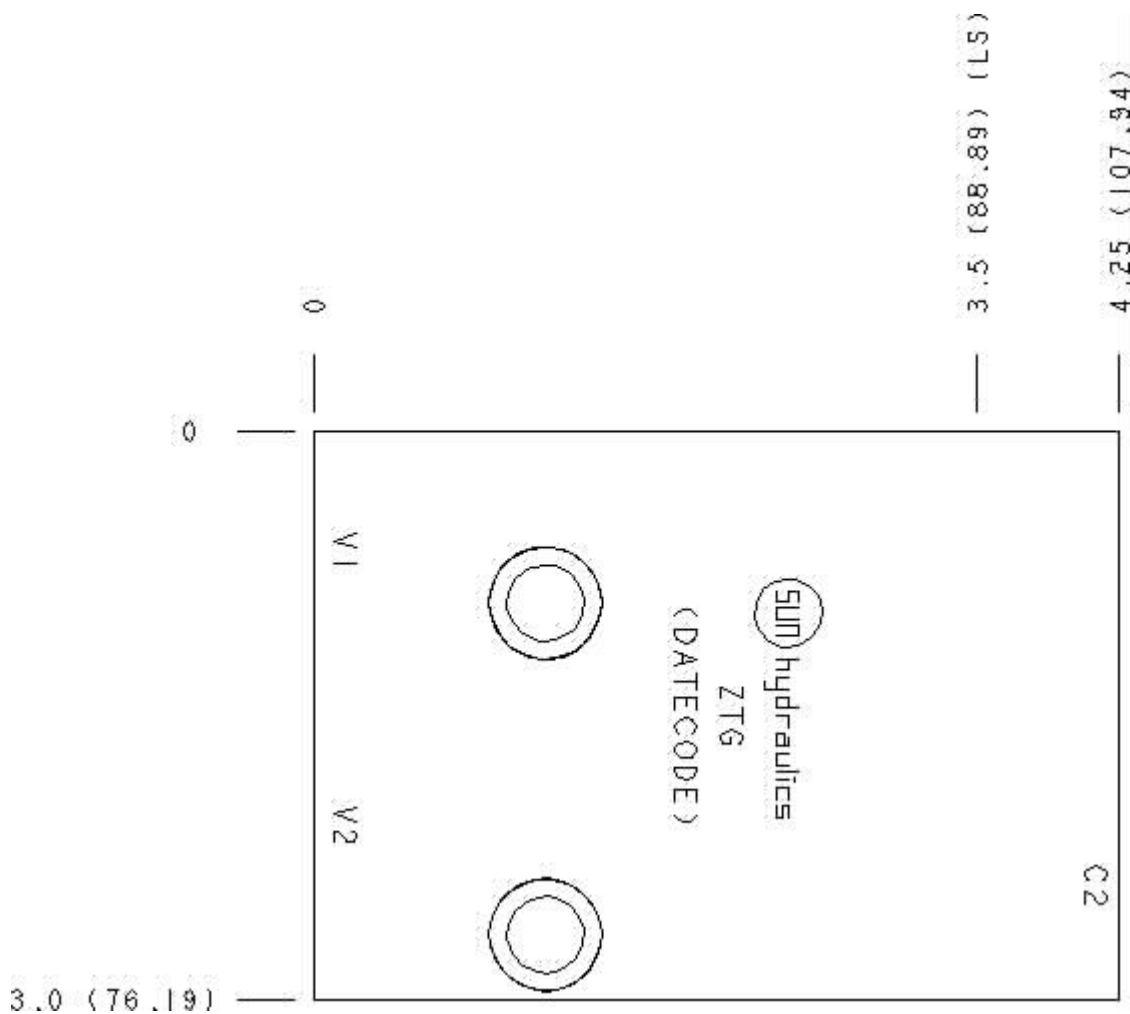
Functional Group:
 Products : Manifolds : Line mount : Counterbalance : 3 Port : Cross pilot with 1 gasket port

Model:
 ZTG

Aluminum Body Pressure Rating: 3000 psi (210 bar)
 Ductile Iron Body Pressure Rating: 5000 psi (350 bar)



Face: 8



Cartridge extension measurement is to the centerline of the cartridge.

Port Headings and Sizes
 ZTG Ports C2, V1, V2

SAE 8

Technical Data

	U.S. Units	Metric Units
Model Weight	1.35 lb.	0.61 kg.
Cavity	T-2A	
Body Features	Direct mount, cross pilot	
Body Type	Line mount	
Interface	Sun	
Open Cavity Quantity	1	
Mounting Hole Diameter	.41 in.	10,4 mm
Mounting Hole Depth	Through	
Mounting Hole C'bore Diameter	.59 in.	
Mounting Hole C'bore Depth	.32 in.	
Mounting Hole Quantity	2	

Option Selection

U.S. Dollar ▼

Model Code	Description
ZTG	Aluminum, Buna-N, U.S. Units
ZTG/V	Aluminum, Viton, U.S. Units
ZTG/S	Ductile Iron, Buna-N, U.S. Units
ZTG/Y	Ductile Iron, Viton, U.S. Units

Display Components

	Description	Quantity
500-001-117	O-Ring	1

Special Notes

- No Special Notes Available for selected model.
-
-