

CONFIGURATION

IS Modifier 65-45-12 Ductile Iron, Buna-N, Chem. Black

TECHNICAL DATA

Body Type	Line mount
Interface	0.75 SAE C61
Body Features	Flange mount through port
Mounting Hole Diameter	.41 in.
Mounting Hole Depth	Through
Mounting Hole C'bore Diameter	.59 in.
Mounting Hole C'bore Depth	.34 in.
Mounting Hole Quantity	4
Open Cavities	1
Cavity	T-10A
Port Size	3/4" Code 61
Model Weight	3.53 lb.

NOTES

Important: Carefully consider the maximum system pressure. The pressure rating of the manifold is dependent on the manifold material, with the port type/size a secondary consideration. Manifolds constructed of aluminum are not rated for pressures higher than 3000 psi (210 bar), regardless of the port type/size specified.

PORT DESIGNATORS

Modifiers	Ports
ZDG, /10, /11, /15, /16, /V	Flange Port 1: 3/4" Code 61; Threaded Ports 1 & 2: SAE 10; Gage Port: 1/4" NPTF;

INCLUDED COMPONENTS

Part	Description	Quantity
500-001-214	O-Ring	1

CONFIGURATION OPTIONS

Model Code Example: ZDG/S

MODIFIER (S)

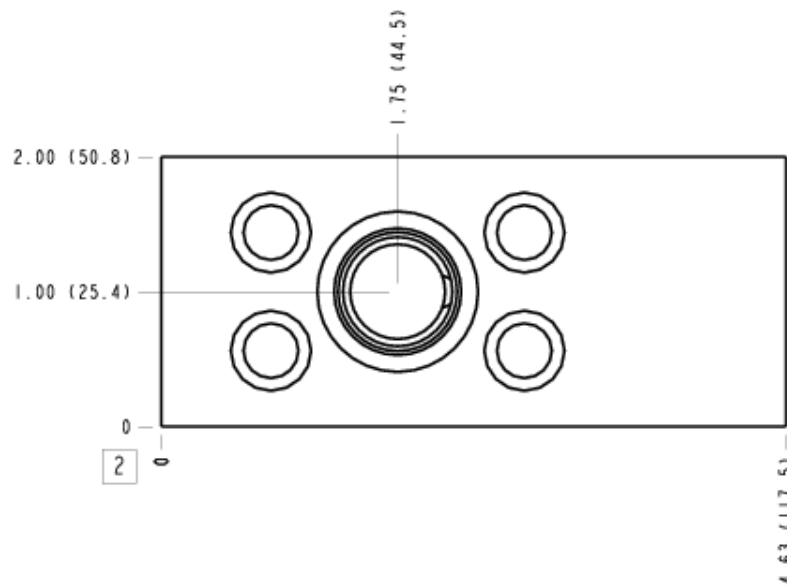
- /S** 65-45-12 Ductile Iron, Buna-N, Chem. Black
6061-T651 Aluminum, Buna-N
- /11** 6061-T651 Aluminum, Buna-N, Clear Anodize - Per MIL SPEC 8625F Type II, Class I
- /10** 6061-T651 Aluminum, Buna-N, Black Anodize - Per MIL SPEC 8625F Type II, Class II
- /V** 6061-T651 Aluminum, Viton
- /16** 6061-T651 Aluminum, Viton, Clear Anodize - Per MIL SPEC 8625F Type II, Class I
- /15** 6061-T651 Aluminum, Viton, Black Anodize - Per MIL SPEC 8625F Type II, Class II
- /S3** 65-45-12 Ductile Iron, Buna-N, Trivalent Clear Zinc with Top Sealer
- /Y** 65-45-12 Ductile Iron, Viton, Chem. Black
- /Y3** 65-45-12 Ductile Iron, Viton, Trivalent Clear Zinc with Top Sealer

MANIFOLD FACES

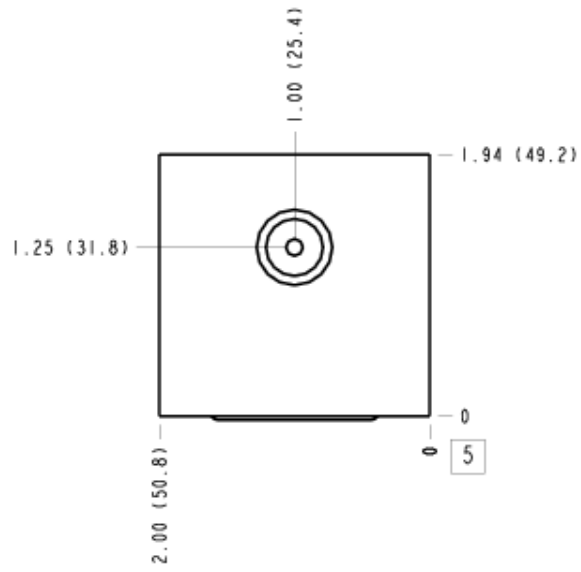
FACE GRID

1	2	3	4
5	6	7	8
9	10	11	12

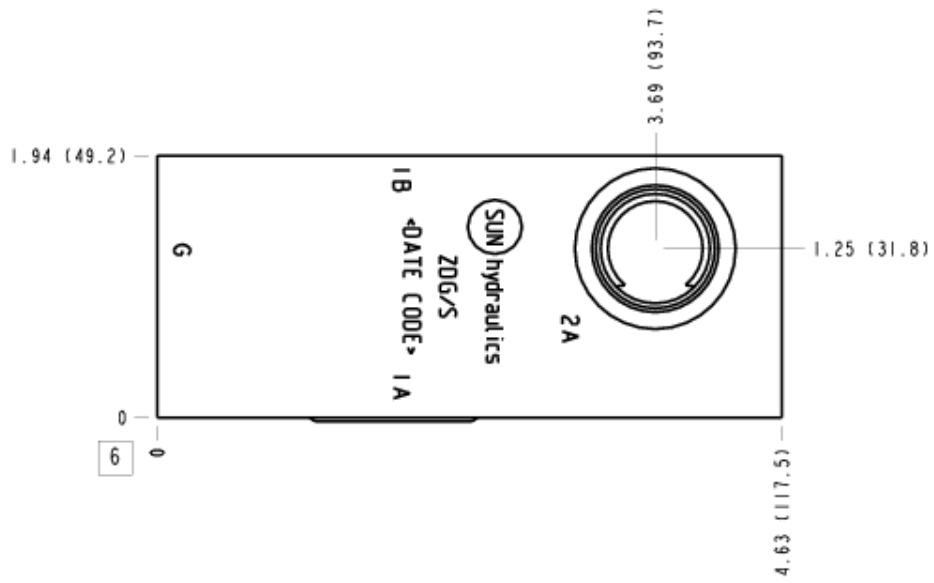
Face 2



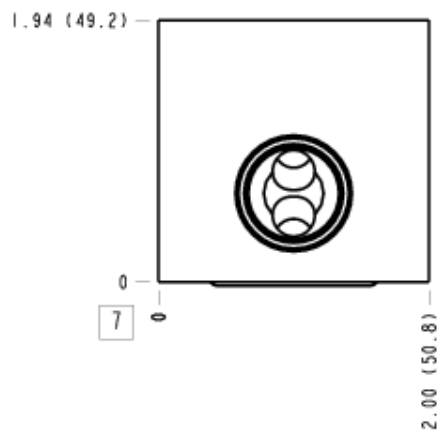
Face 5



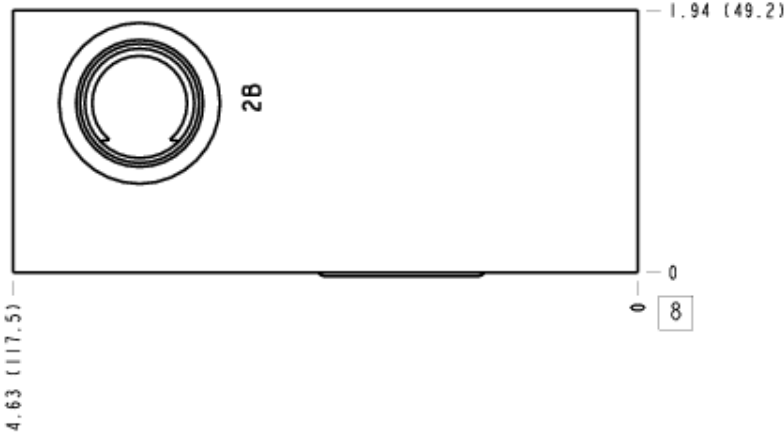
Face 6



Face 7



Face 8



Face 10

