

TECHNICAL DATA

Body Type	Line mount
Interface	None
Body Features	Cross pilot with shuttle
Mounting Hole Diameter	.42 in.
Mounting Hole Depth	Through
Mounting Hole Quantity	2

NOTES *Important:* Carefully consider the maximum system pressure. The pressure rating of the manifold is dependent on the manifold material, with the port type/size a secondary consideration. Manifolds constructed of aluminum are not rated for pressures higher than 3000 psi (210 bar), regardless of the port type/size specified.

PORT DESIGNATORS

Modifiers	Ports
YKM, IV	Ports C1, C2, V1, V2: SAE 16; Shuttle Port: SAE 4;

INCLUDED COMPONENTS

Part	Description	Quantity
CSAAEXN	Cartridge	1

CONFIGURATION OPTIONS

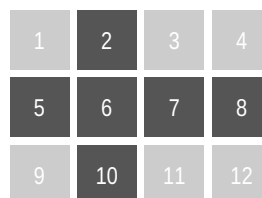
Model Code Example: YKM

MODIFIER

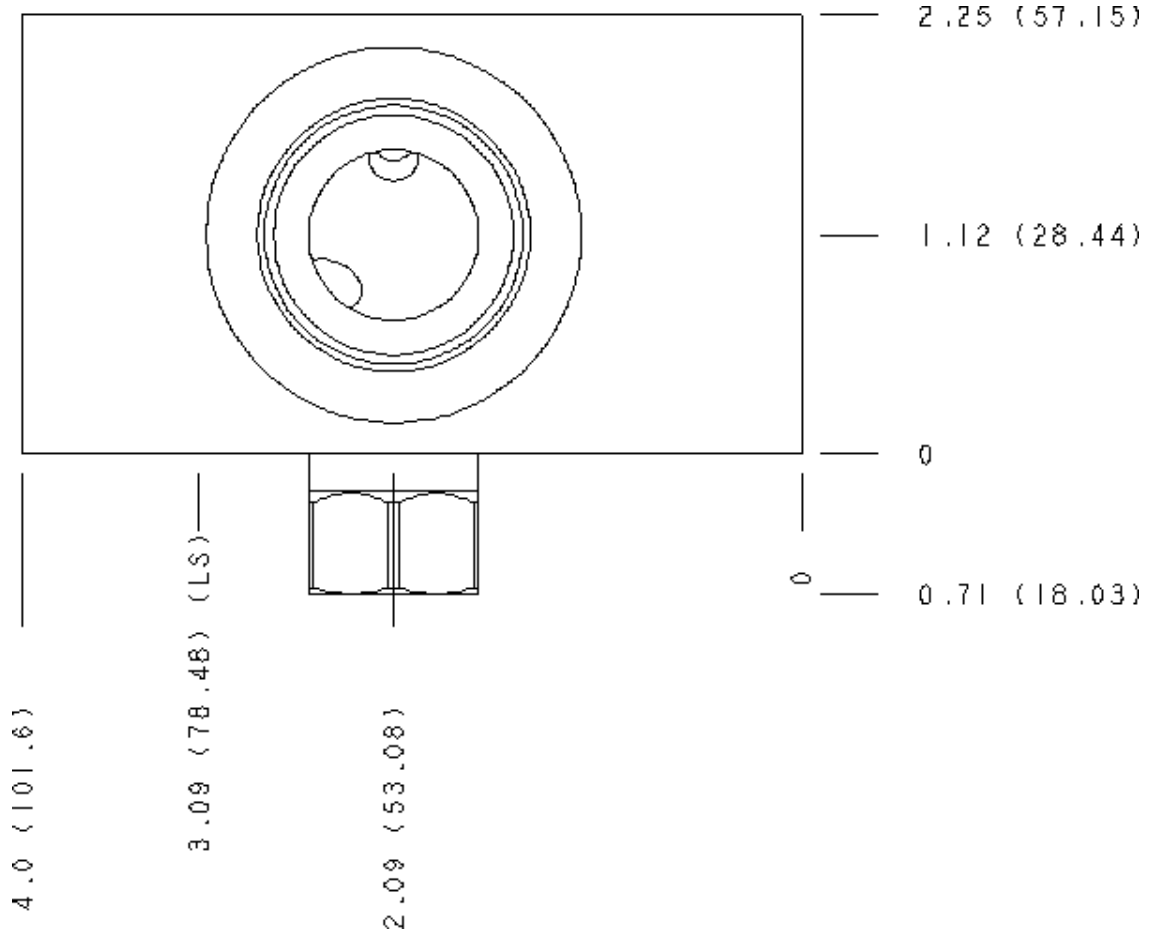
- 6061-T651 Aluminum, Buna-N
- IS 65-45-12 Ductile Iron, Buna-N, Blackened
- IV 6061-T651 Aluminum, Viton
- IY 65-45-12 Ductile Iron, Viton, Blackened

MANIFOLD FACES

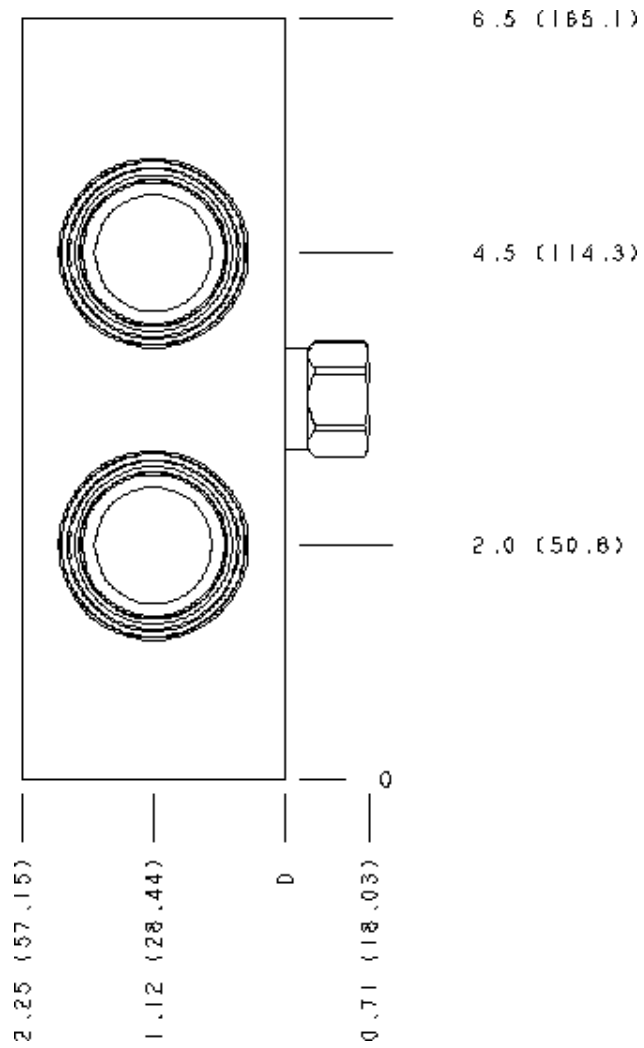
FACE GRID



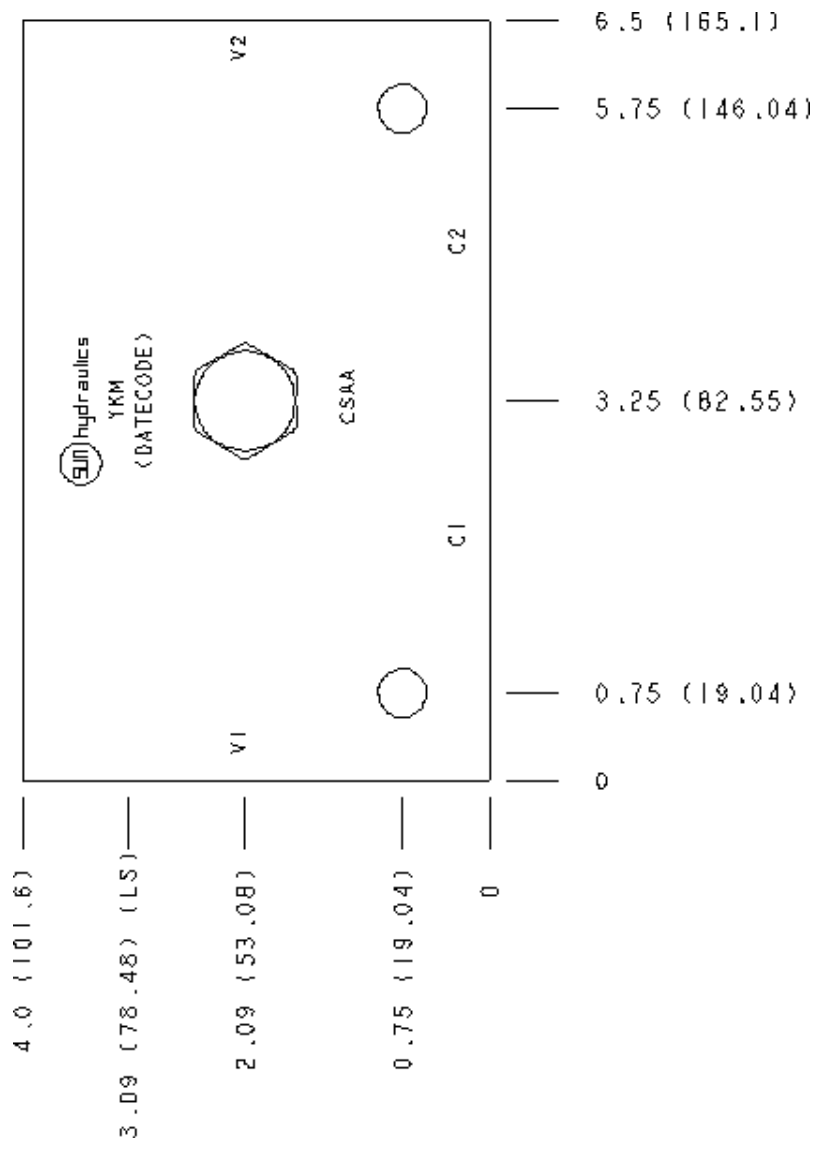
Face 2



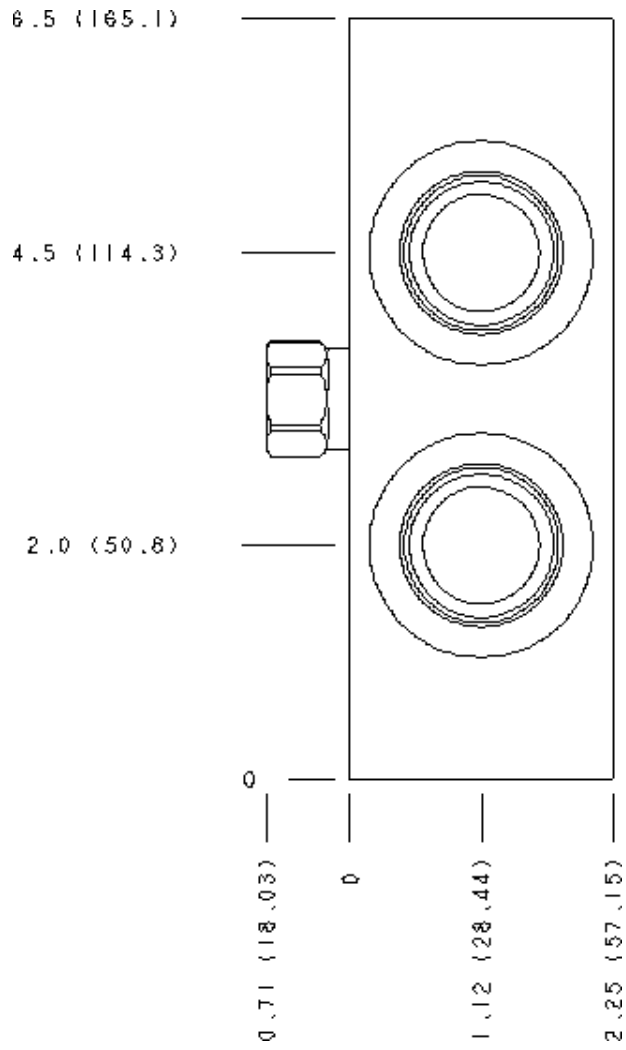
Face 5



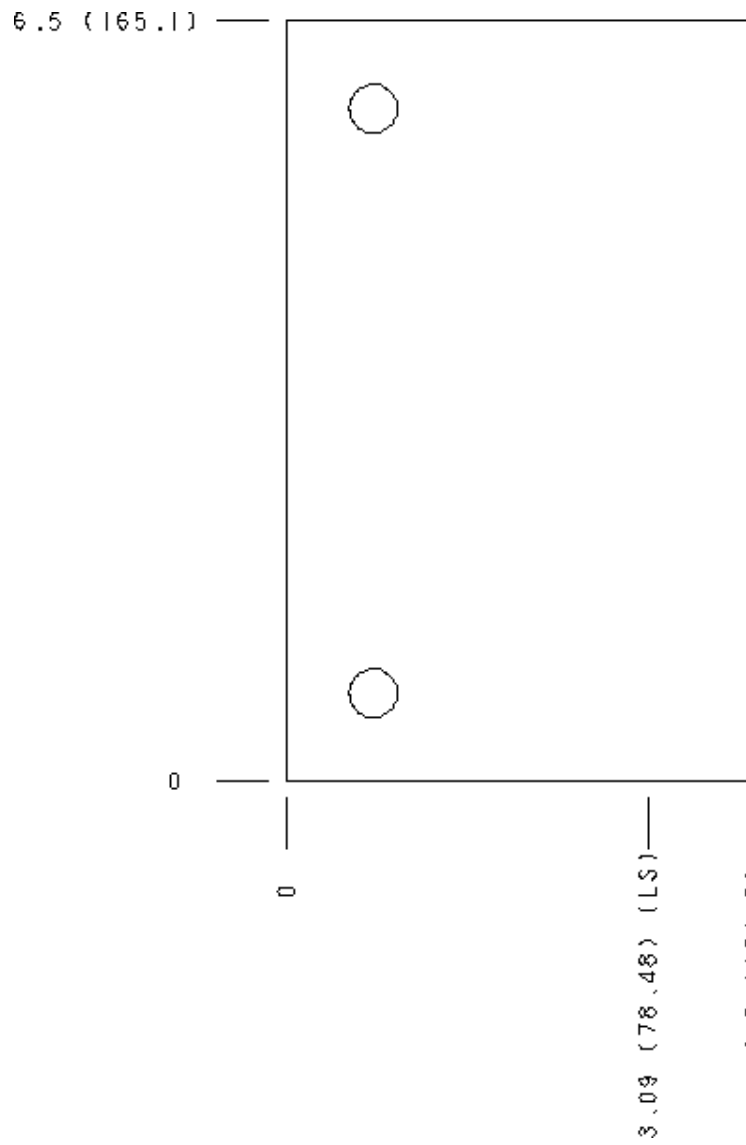
Face 6



Face 7



Face 8



Face 10

