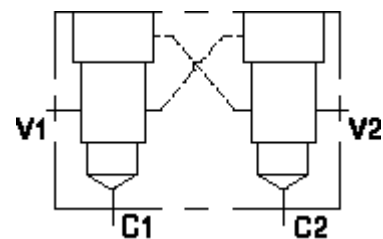


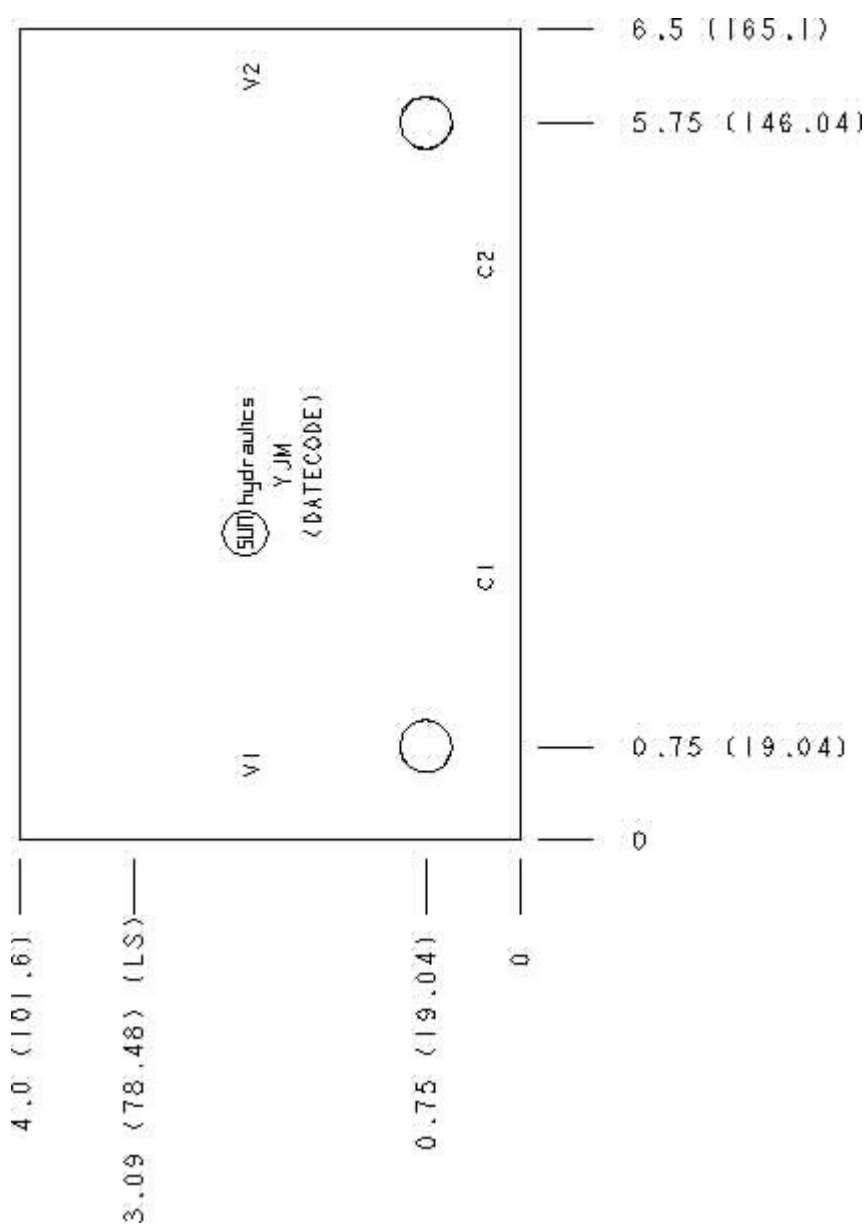
Functional Group:  
 Products : Manifolds : Line mount : Counterbalance : 3 Port : Cross pilot

Model:  
 YJM

Aluminum Body Pressure Rating: 3000 psi (210 bar)  
 Ductile Iron Body Pressure Rating: 5000 psi (350 bar)



Face: 6



Cartridge extension measurement is to the centerline of the cartridge.

Technical Data

	U.S. Units	Metric Units
Model Weight	4.24 lb.	1.92 kg.
Cavity		T-17A
Body Features		Cross pilot
Body Type		Line mount
Interface		None
Open Cavity Quantity		2
Mounting Hole Diameter	.41 in.	10,4 mm
Mounting Hole Depth		Through
Mounting Hole Quantity		2

Option Selection

U.S. Dollar ▼

Model Code	Description
YJM	Aluminum, Buna-N, U.S. Units
YJM/S	Ductile Iron, Buna-N, U.S. Units

Special Notes

- No Special Notes Available for selected model.