

**TECHNICAL DATA**

Body Type	Line mount
Interface	None
Body Features	Cross pilot with shuttle
Mounting Hole Diameter	.41 in.
Mounting Hole Depth	Through
Mounting Hole Quantity	2
Open Cavities	2
Cavity	T-2A
Port Size	SAE 12
Model Weight	1.64 lb.

**NOTES**

**Important:** Carefully consider the maximum system pressure. The pressure rating of the manifold is dependent on the manifold material, with the port type/size a secondary consideration. Manifolds constructed of aluminum are not rated for pressures higher than 3000 psi (210 bar), regardless of the port type/size specified.

**PORT DESIGNATORS**

Modifiers	Ports
YHL, /V	Ports C1, C2, V1, V2: SAE 12; Port S: SAE 4;

**INCLUDED COMPONENTS**

Part	Description	Quantity
CSZNXXN	Cartridge	1

**CONFIGURATION OPTIONS**

Model Code Example: YHL

**MODIFIER**

6061-T651 Aluminum, Buna-N

/S 65-45-12 Ductile Iron, Buna-N, Blackened

/V 6061-T651 Aluminum, Viton

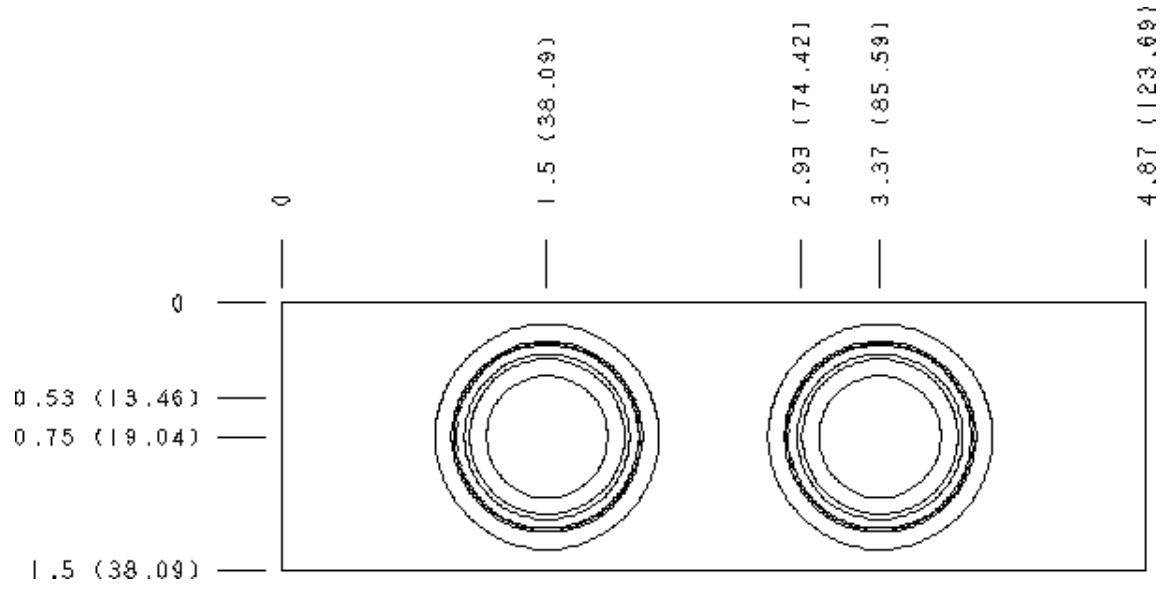
/Y 65-45-12 Ductile Iron, Viton, Blackened

**MANIFOLD FACES**

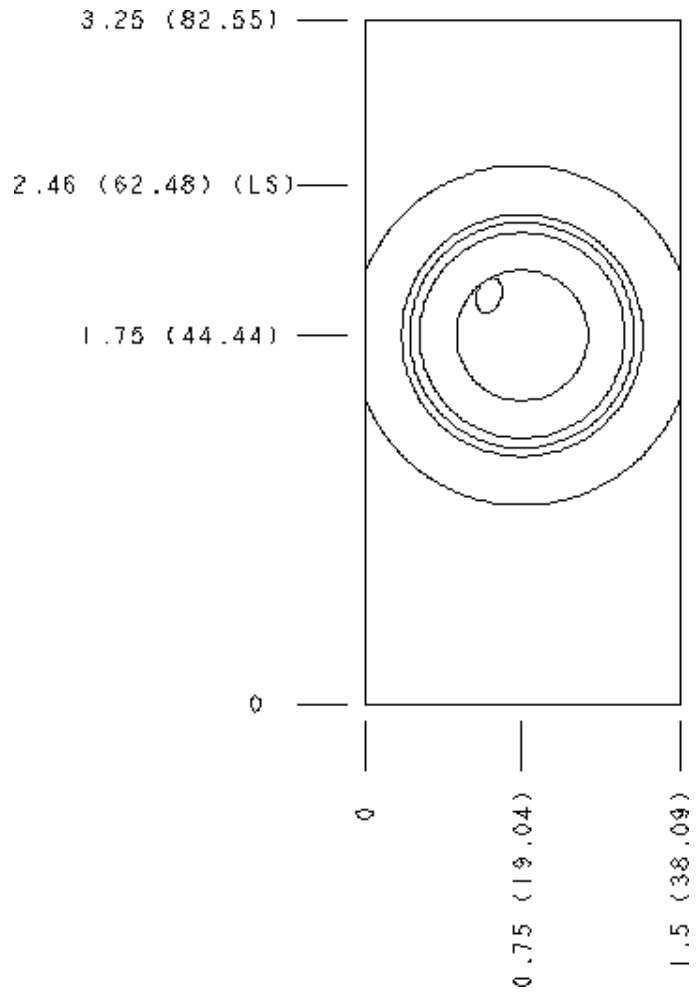
**FACE GRID**

1	2	3	4
5	6	7	8
9	10	11	12

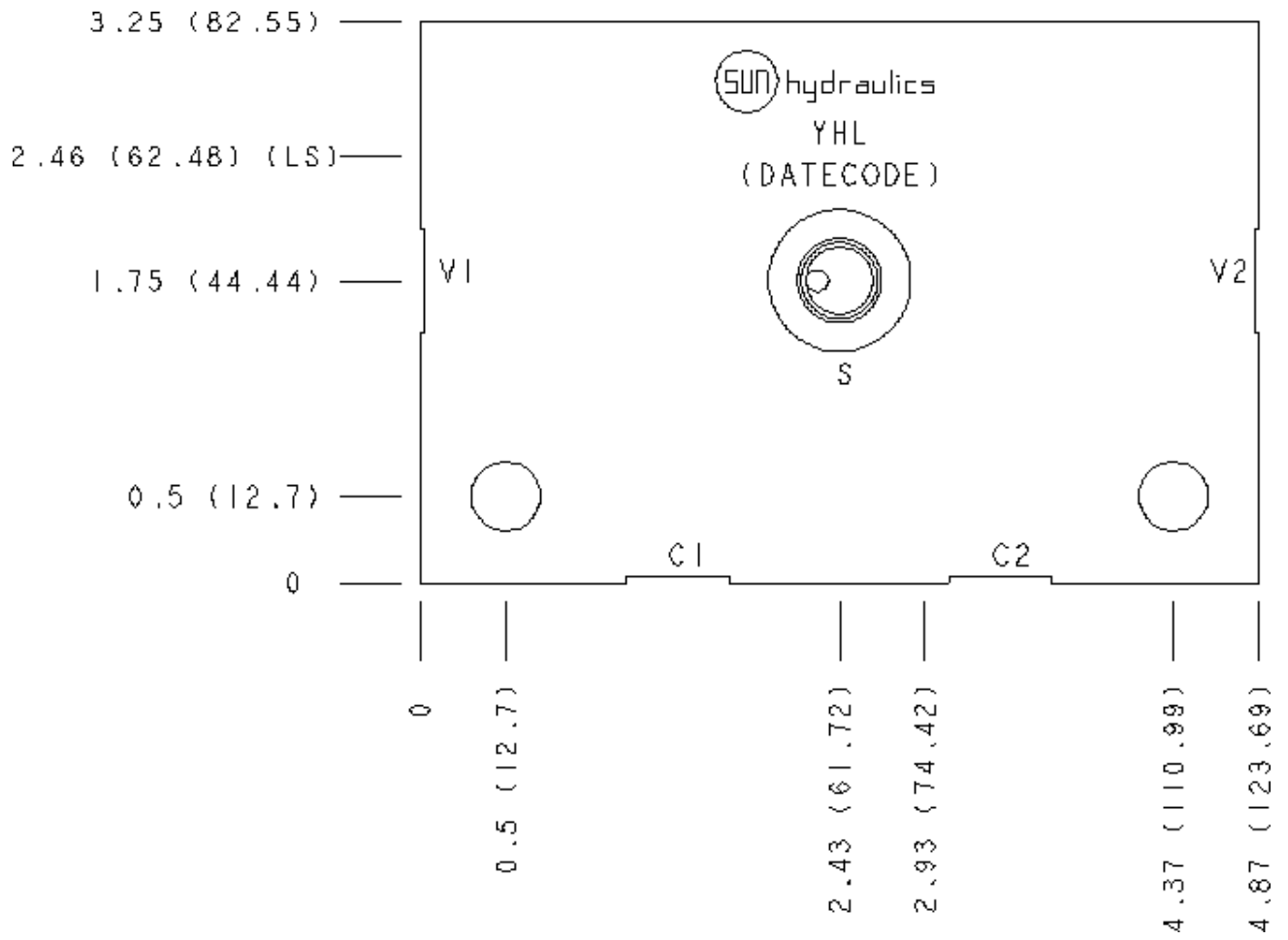
**Face 2**



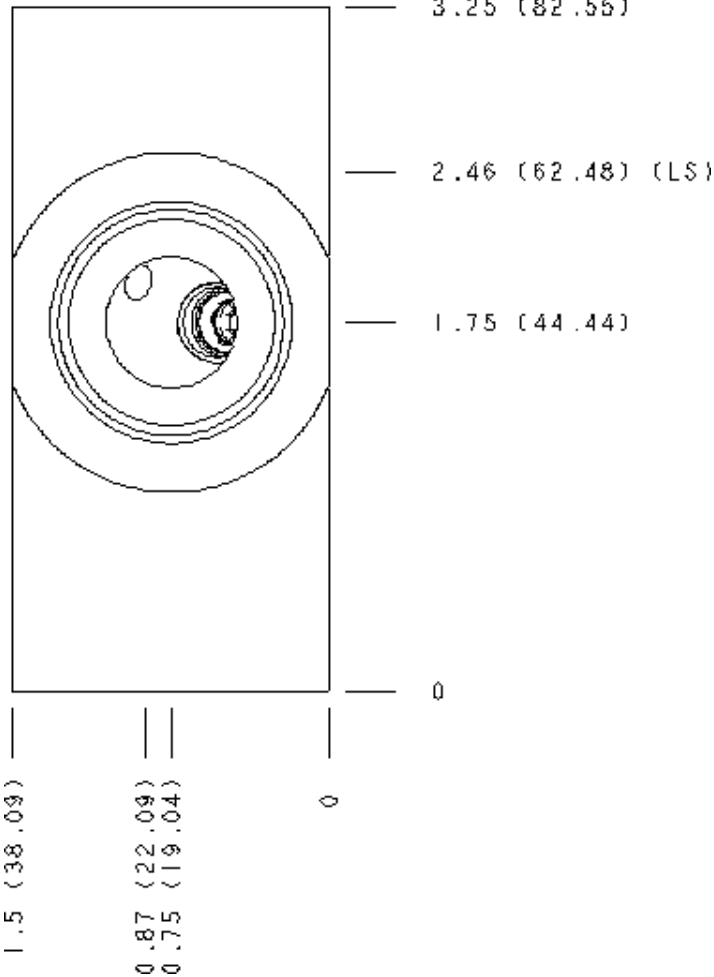
**Face 5**



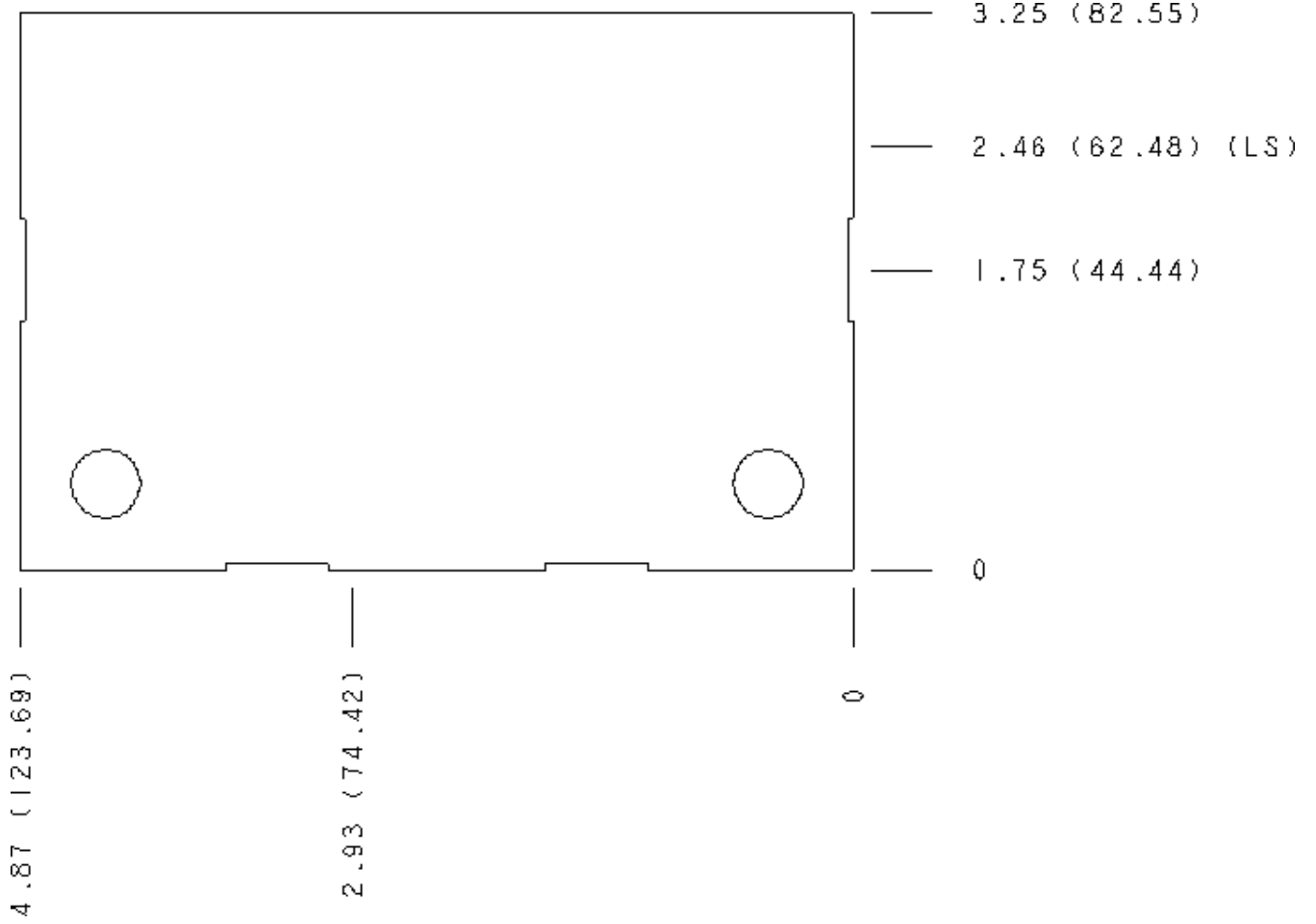
# Face 6



Face 7



### Face 8



### Face 10

