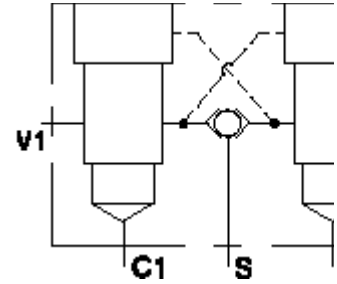
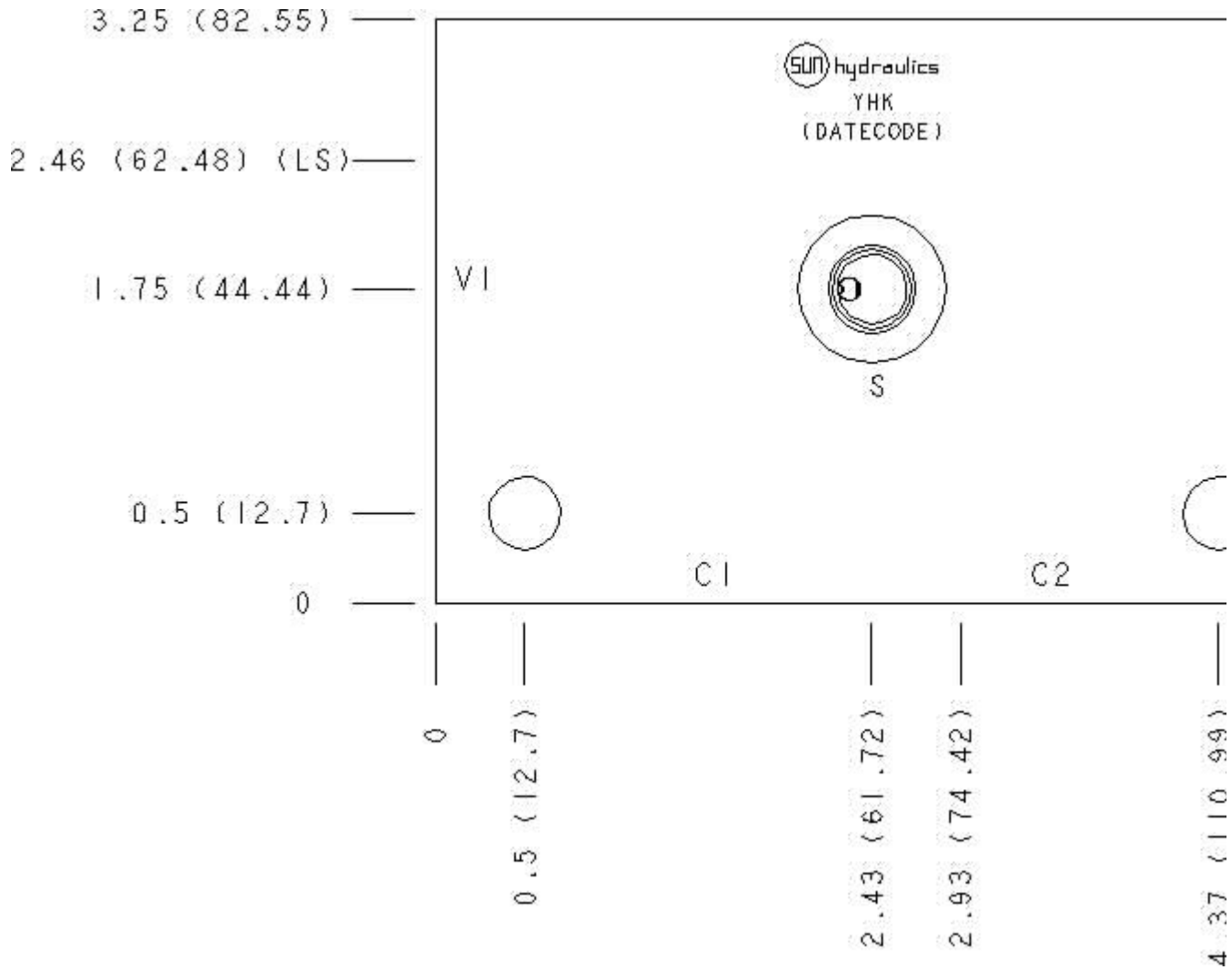


Functional Group:
 Products : Manifolds : Line mount : Counterbalance : 3 Port : Cross pilot with shuttle

Aluminum Body Pressure Rating: 3000 psi (210 bar)
 Ductile Iron Body Pressure Rating: 5000 psi (350 bar)



Face: 6



Cartridge extension measurement is to the centerline of the cartridge.

Port Headings and Sizes
 YHK Ports C1, C2, V1, V2

SAE 10

Technical Data

	U.S. Units	Metric Units
Cavity		T-2A
Body Features	Cross pilot with shuttle	
Body Type	Line mount	
Interface	None	
Open Cavity Quantity	2	
Mounting Hole Diameter	.41 in.	10,4 mm
Mounting Hole Depth	Through	
Mounting Hole Quantity	2	

Option Selection

U.S. Dollar

Model Code	Description
YHK	Aluminum, Buna-N, U.S. Units
YHK/S	Ductile Iron, Buna-N, U.S. Units

Display Components

CSZNXXN	Description Model	Quantity
		1

Special Notes

- No Special Notes Available for selected model.