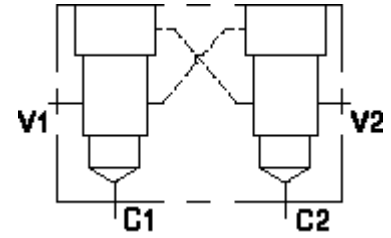


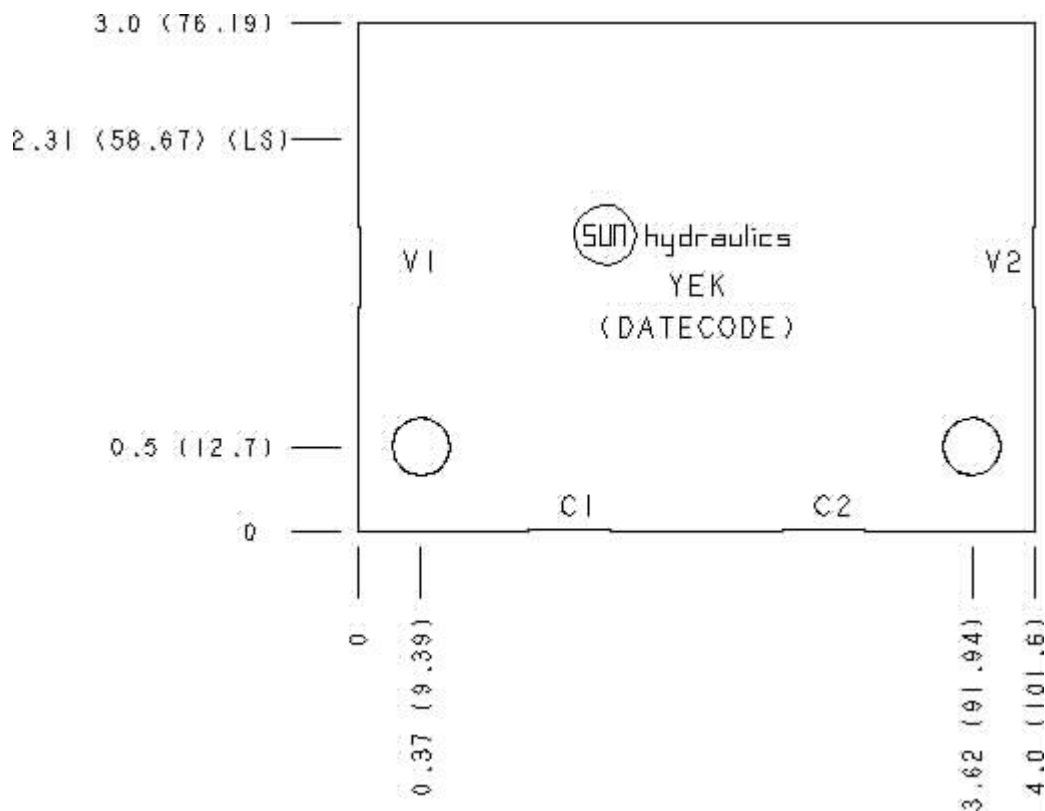
Functional Group:  
 Products : Manifolds : Line mount : Counterbalance : 3 Port : Cross pilot

Model:  
 YEK

Aluminum Body Pressure Rating: 3000 psi (210 bar)  
 Ductile Iron Body Pressure Rating: 5000 psi (350 bar)



Face: 6



Cartridge extension measurement is to the centerline of the cartridge.

Port Headings and Sizes

YEK All Ports SAE 10

Technical Data

	U.S. Units	Metric Units
Model Weight	1.06 lb.	0.48 kg.
Cavity	T-11A	
Body Features	Cross pilot	
Body Type	Line mount	

Interface	None	
Open Cavity Quantity	2	
Mounting Hole Diameter	.34 in.	8.6 mm
Mounting Hole Depth	Through	
Mounting Hole Quantity	2	

Option Selection

U.S. Dollar ▼

Model Code	Description
YEK	Aluminum, Buna-N, U.S. Units
YEK/S	Ductile Iron, Buna-N, U.S. Units

Special Notes

- No Special Notes Available for selected model.