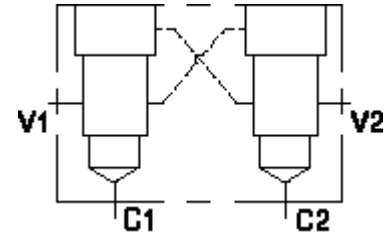


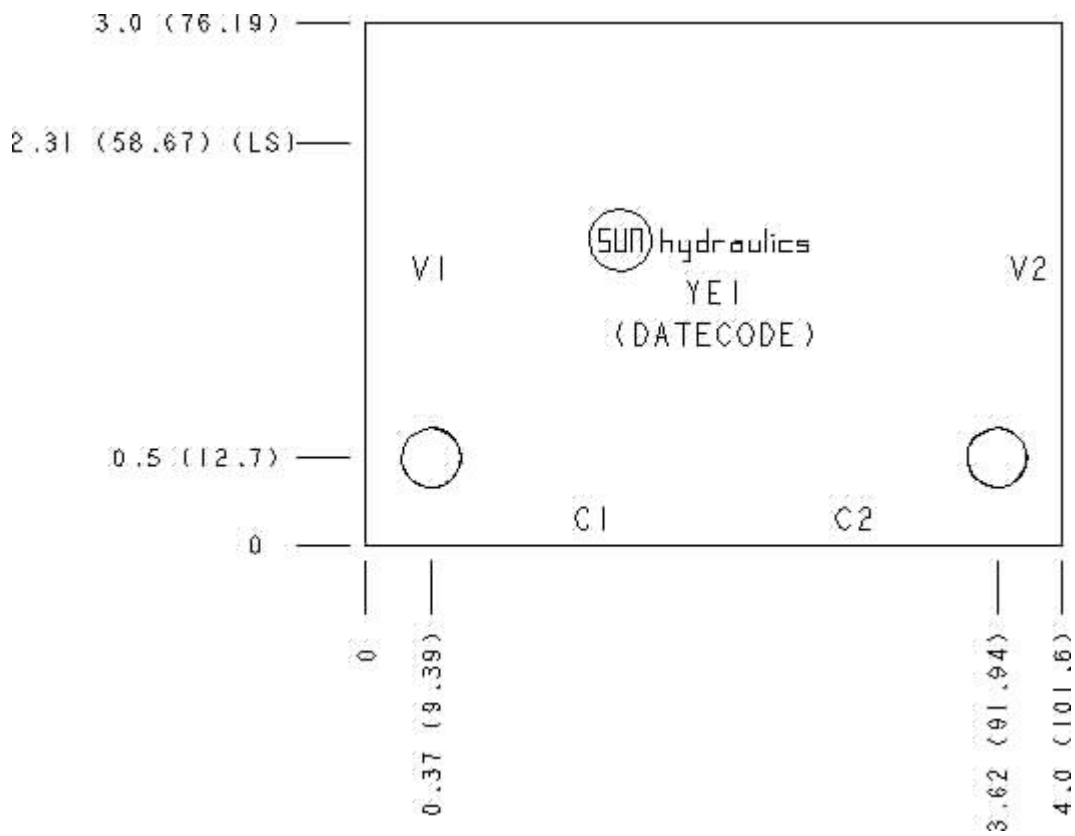
Functional Group:  
 Products : Manifolds : Line mount : Counterbalance : 3 Port : Cross pilot

Model:  
 YEI

Aluminum Body Pressure Rating: 3000 psi (210 bar)  
 Ductile Iron Body Pressure Rating: 5000 psi (350 bar)



Face: 6



Cartridge extension measurement is to the centerline of the cartridge.

Port Headings and Sizes

YEI	Port C1	SAE 6
YEI	Port C2	SAE 6
YEI	Port V1	SAE 6
YEI	Port V2	SAE 6

Technical Data

	U.S. Units	Metric Units

Model Weight	1.16 lb.	0.53 kg.
Cavity	T-11A	
Body Features	Cross pilot	
Body Type	Line mount	
Interface	None	
Open Cavity Quantity	2	
Mounting Hole Diameter	.34 in.	8.6 mm
Mounting Hole Depth	Through	
Mounting Hole Quantity	2	

Option Selection

U.S. Dollar ▼

Model Code	Description
YEI	Aluminum, Buna-N, U.S. Units
YEI/S	Ductile Iron, Buna-N, U.S. Units

Special Notes

- No Special Notes Available for selected model.