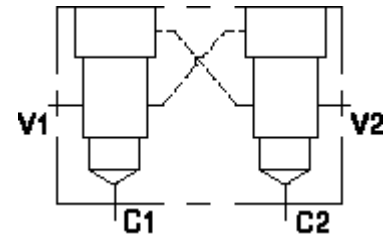


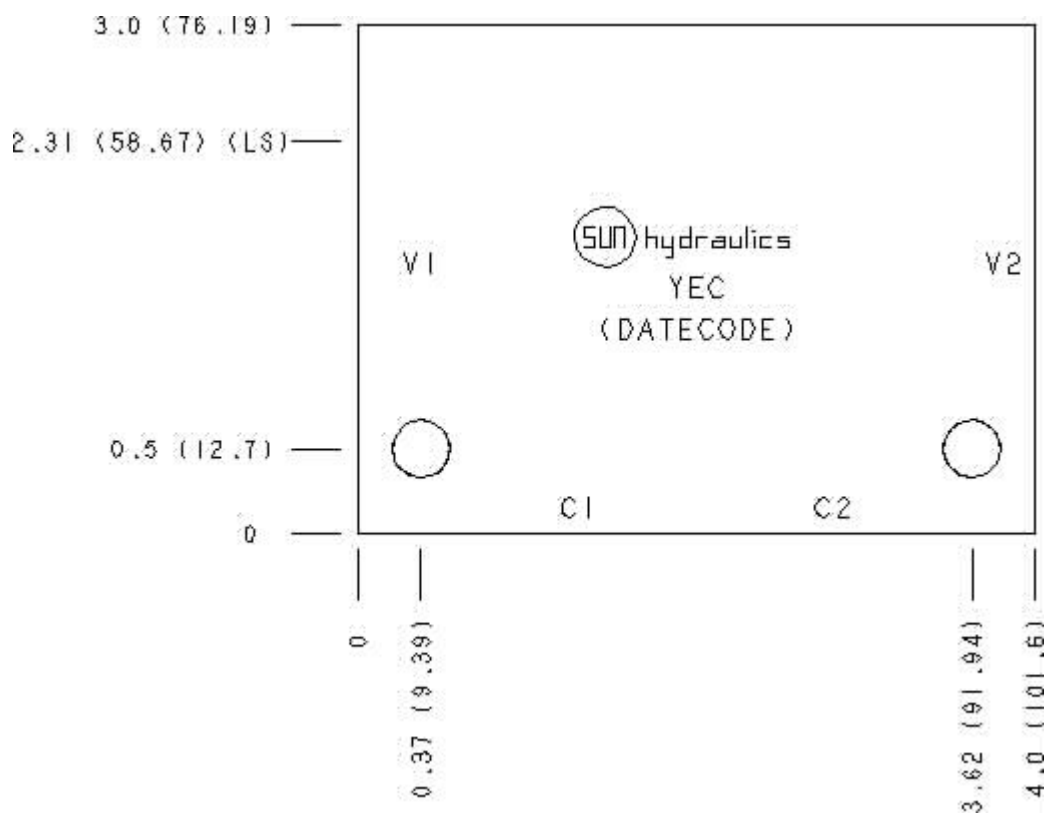
Functional Group:  
 Products : Manifolds : Line mount : Counterbalance : 3 Port : Cross pilot

Model:  
 YEC

Aluminum Body Pressure Rating: 3000 psi (210 bar)  
 Ductile Iron Body Pressure Rating: 5000 psi (350 bar)



Face: 6



Cartridge extension measurement is to the centerline of the cartridge.

Port Headings and Sizes

YEC All Ports 1/2" NPTF

Technical Data

	U.S. Units	Metric Units
Model Weight	1.11 lb.	0.50 kg.
Cavity	T-11A	
Body Features	Cross pilot	
Body Type	Line mount	

Interface	None
Open Cavity Quantity	2
Mounting Hole Diameter	.34 in. 8.6 mm
Mounting Hole Depth	Through
Mounting Hole Quantity	2

---

Option Selection

U.S. Dollar ▼

Model Code	Description
YEC	Aluminum, Buna-N, U.S. Units
YEC/S	Ductile Iron, Buna-N, U.S. Units

---

Special Notes

- No Special Notes Available for selected model.