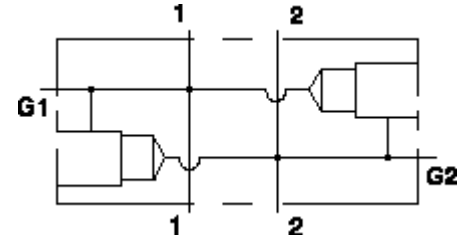


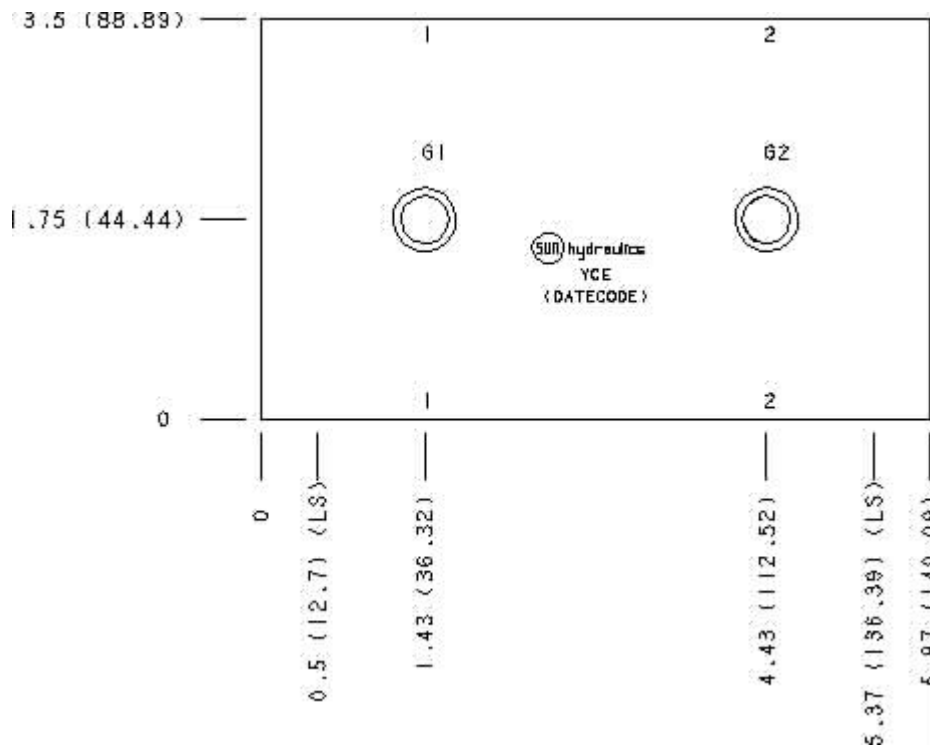
Functional Group:
 Products : Manifolds : Line mount : Relief : 2 Port : Cross port with gage ports

Model:
 YCE

Aluminum Body Pressure Rating: 3000 psi (210 bar)
 Ductile Iron Body Pressure Rating: 5000 psi (350 bar)



Face: 2



Cartridge extension measurement is to the centerline of the cartridge.

Port Headings and Sizes

YCE	Ports 1 & 2	1" NPTF
YCE	Gage Ports	1/4" NPTF

Technical Data

	U.S. Units	Metric Units
Model Weight	5.76 lb.	2.61 kg.
Cavity	T-3A	
Body Features	Cross port with gauge ports	
Body Type	Line mount	
Interface	None	

Open Cavity Quantity	2
Mounting Hole Thread	.375-16 UNC - 2B in.
Mounting Hole Depth	.62 in. 15,7 mm
Mounting Hole Quantity	2

Option Selection

U.S. Dollar ▼

Model Code	Description
YCE	Aluminum, Buna-N, U.S. Units
YCE/S	Ductile Iron, Buna-N, U.S. Units

Special Notes

- No Special Notes Available for selected model.