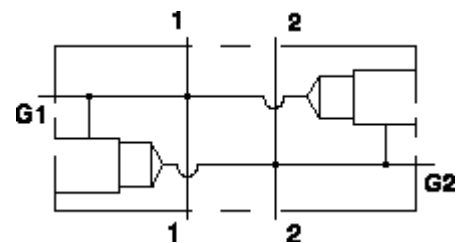


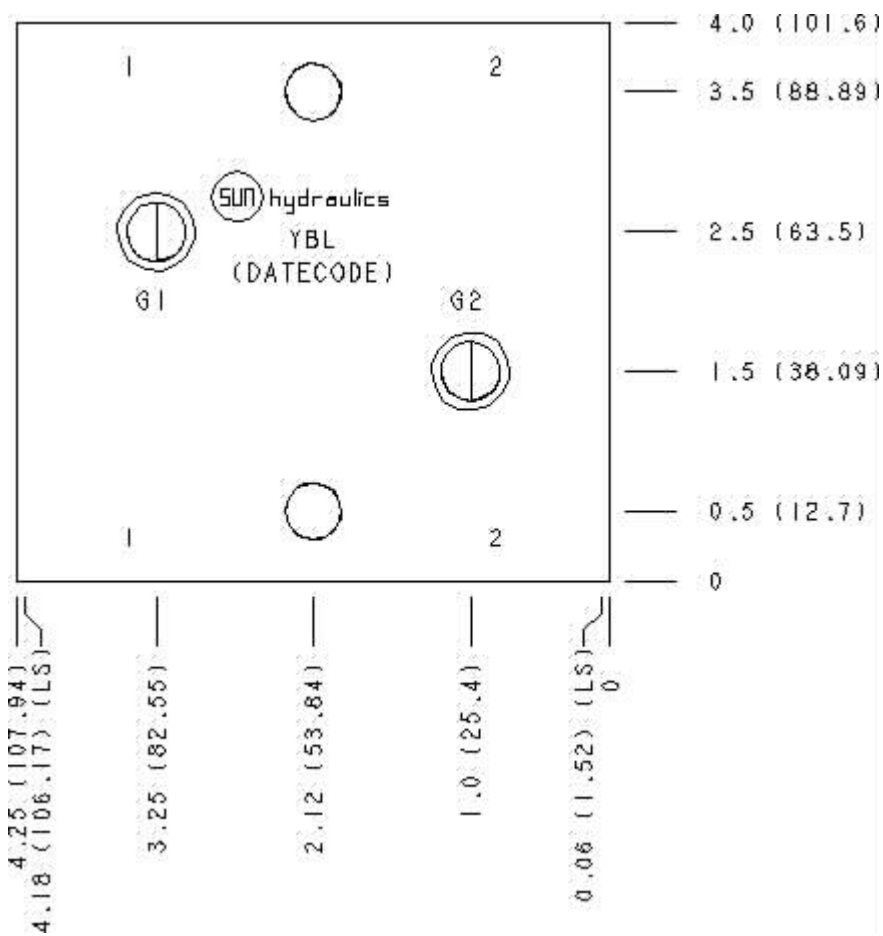
Functional Group:  
 Products : Manifolds : Line mount : Relief : 2 Port : Cross port with gage ports

Model:  
 YBL

Aluminum Body Pressure Rating: 3000 psi (210 bar)  
 Ductile Iron Body Pressure Rating: 5000 psi (350 bar)



Face: 6



Cartridge extension measurement is to the centerline of the cartridge.

Port Headings and Sizes

YBL	Ports 1 & 2	SAE 12
YBL	Ports G1 & G2	1/4" NPTF

Technical Data

	U.S. Units	Metric Units
Model Weight	2.39 lb.	1.08 kg.
Cavity	T-3A	
Body Features	Cross port with gauge ports	
Body Type	Line mount	
Interface	None	
Open Cavity Quantity	2	
Mounting Hole Diameter	.41 in.	10,4 mm
Mounting Hole Depth	Through	
Mounting Hole Quantity	2	

Option Selection

U.S. Dollar ▼

Model Code	Description
YBL	Aluminum, Buna-N, U.S. Units
YBL/S	Ductile Iron, Buna-N, U.S. Units

Special Notes

- No Special Notes Available for selected model.