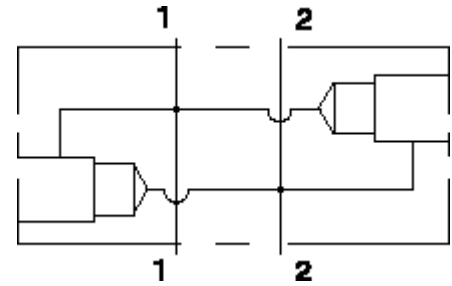


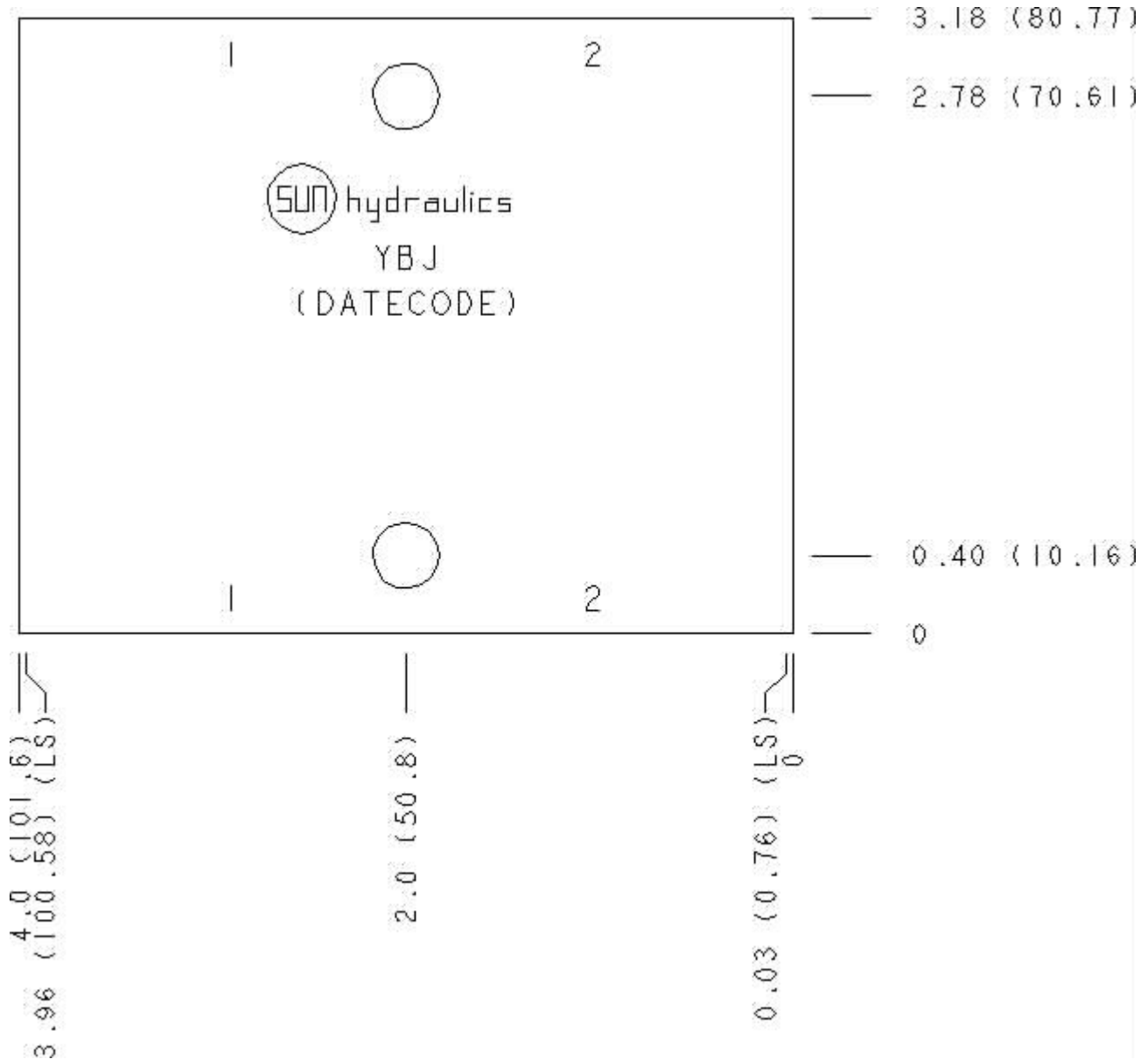
Functional Group:  
 Products : Manifolds : Line mount : Relief : 2 Port : Cross port

Model:  
 YBJ

Aluminum Body Pressure Rating: 3000 psi (210 bar)  
 Ductile Iron Body Pressure Rating: 5000 psi (350 bar)



Face: 6



Cartridge extension measurement is to the centerline of the cartridge.

---

Port Headings and Sizes

YBJ All Ports SAE 8

---

---

Technical Data

	U.S. Units	Metric Units
Model Weight	1.38 lb.	0.63 kg.
Cavity	T-3A	
Body Features	Cross port	
Body Type	Line mount	
Interface	None	
Open Cavity Quantity	2	
Mounting Hole Diameter	.34 in.	8.6 mm
Mounting Hole Depth	Through	
Mounting Hole Quantity	2	

---

Option Selection

U.S. Dollar ▼

Model Code	Description
YBJ	Aluminum, Buna-N, U.S. Units
YBJ/S	Ductile Iron, Buna-N, U.S. Units

---

Special Notes

- No Special Notes Available for selected model.
- 
-