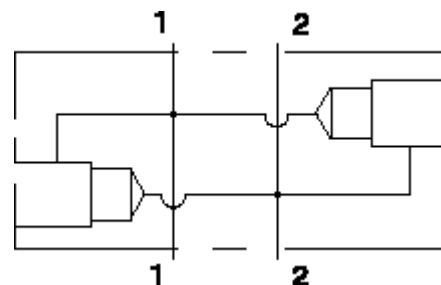


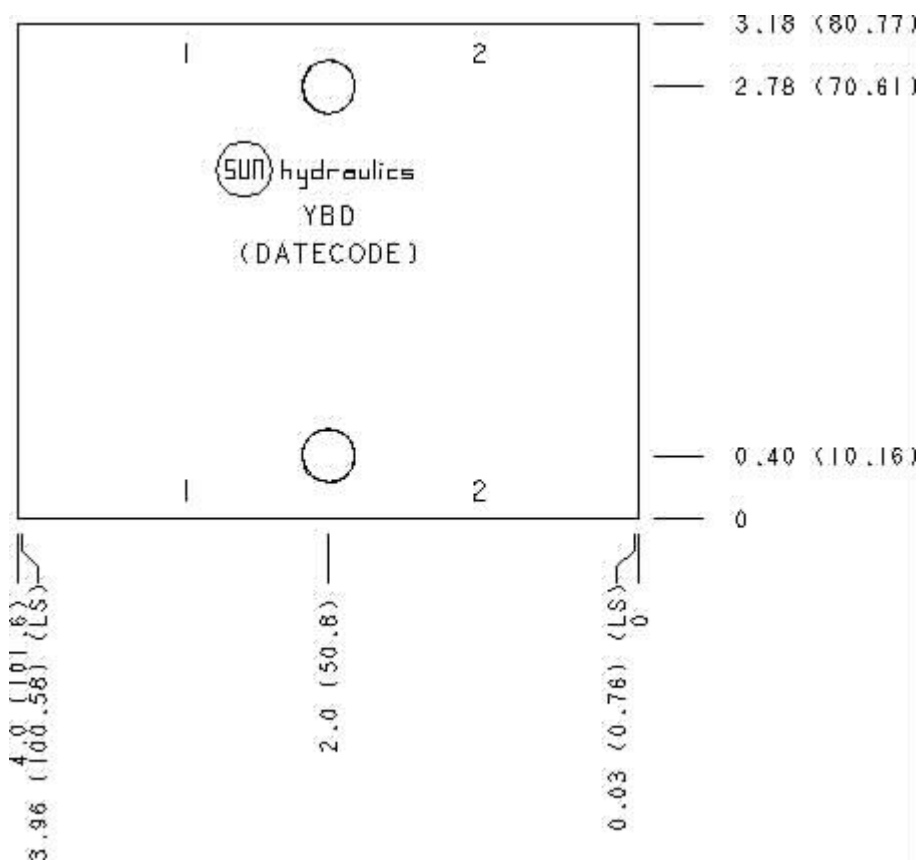
Functional Group:  
 Products : Manifolds : Line mount : Relief : 2 Port : Cross port

Model:  
 YBD

Aluminum Body Pressure Rating: 3000 psi (210 bar)  
 Ductile Iron Body Pressure Rating: 5000 psi (350 bar)



Face: 6



Cartridge extension measurement is to the centerline of the cartridge.

#### Port Headings and Sizes

YBD All Ports 3/4" NPTF

#### Technical Data

|              | U.S. Units | Metric Units |
|--------------|------------|--------------|
| Model Weight | 1.25 lb.   | 0.57 kg.     |

|                        |            |        |
|------------------------|------------|--------|
| Cavity                 | T-3A       |        |
| Body Features          | Cross port |        |
| Body Type              | Line mount |        |
| Interface              | None       |        |
| Open Cavity Quantity   | 2          |        |
| Mounting Hole Diameter | .34 in.    | 8.6 mm |
| Mounting Hole Depth    | Through    |        |
| Mounting Hole Quantity | 2          |        |

Option Selection

U.S. Dollar ▼

| Model Code | Description                      |
|------------|----------------------------------|
| YBD        | Aluminum, Buna-N, U.S. Units     |
| YBD/S      | Ductile Iron, Buna-N, U.S. Units |

Special Notes

- No Special Notes Available for selected model.