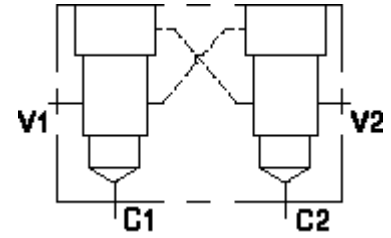


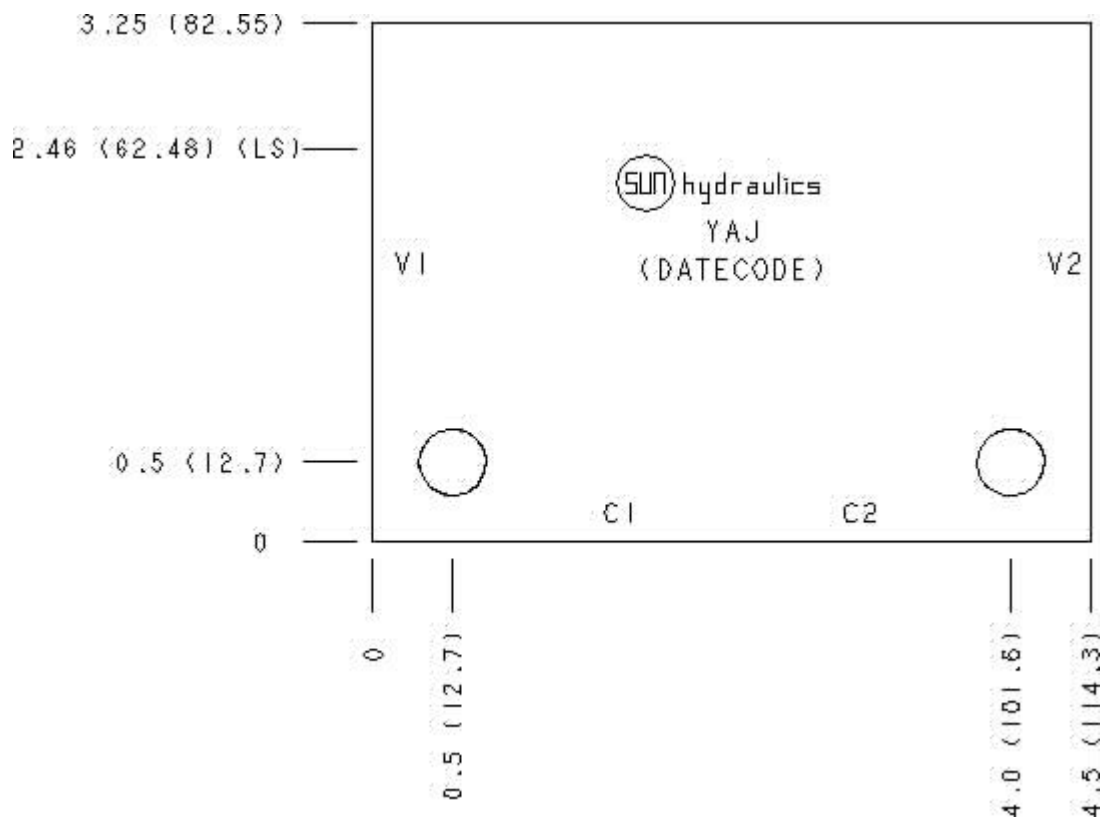
Functional Group:
 Products : Manifolds : Line mount : Counterbalance : 3 Port : Cross pilot

Model:
 YAJ

Aluminum Body Pressure Rating: 3000 psi (210 bar)
 Ductile Iron Body Pressure Rating: 5000 psi (350 bar)



Face: 6



Cartridge extension measurement is to the centerline of the cartridge.

Port Headings and Sizes

YAJ All Ports SAE 8

Technical Data

	U.S. Units	Metric Units
Model Weight	1.61 lb.	0.73 kg.
Cavity	T-2A	
Body Features	Cross pilot	

Body Type	Line mount
Interface	None
Open Cavity Quantity	2

Option Selection

U.S. Dollar ▼

Model Code	Description
YAJ	Aluminum, Buna-N, U.S. Units
YAJ/S	Ductile Iron, Buna-N, U.S. Units

Special Notes

- No Special Notes Available for selected model.