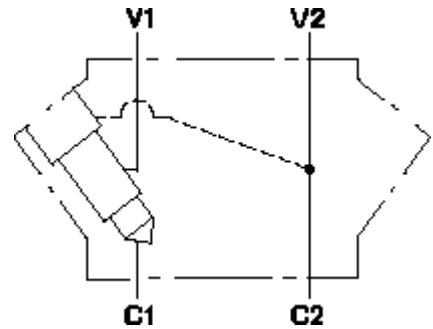
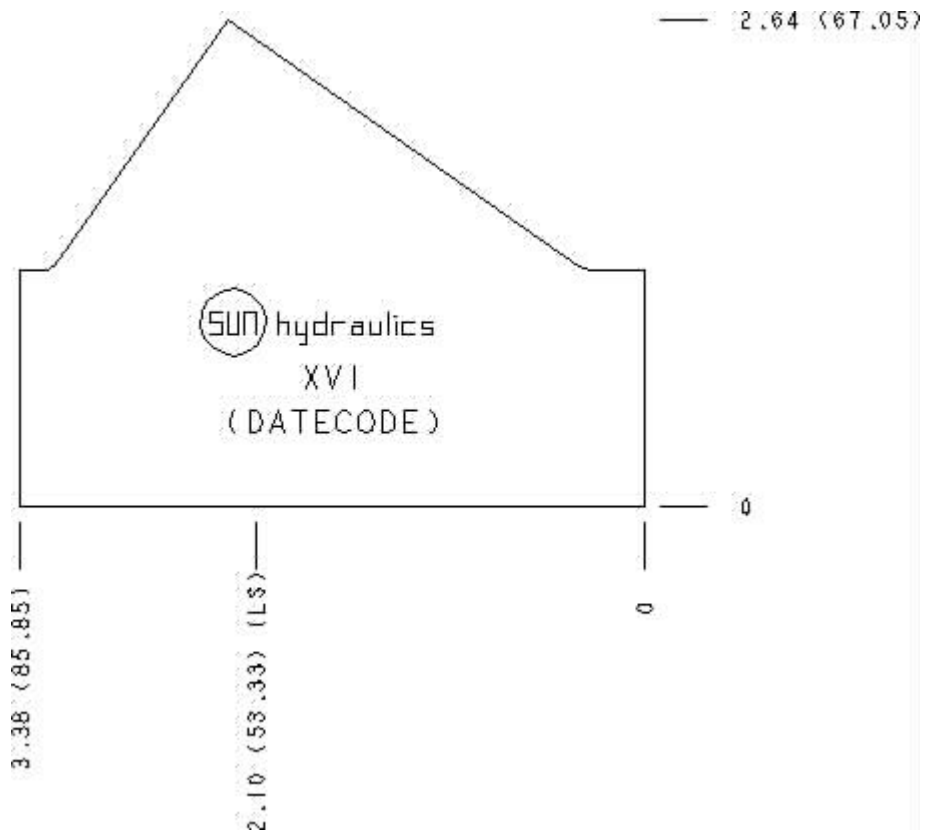


Functional Group:  
 Products : Manifolds : Line mount : Counterbalance : 3 Port : Inline, cross pilot

Model:  
 XVI



Face: 10



Port Headings and Sizes  
 XVI All Ports

SAE 8

---

Technical Data

	U.S. Units	Metric Units
Cavity	T-11A	
Body Features	Inline, cross pilot	
Body Type	Line mount	
Interface	None	
Open Cavity Quantity	1	
Mounting Hole Diameter	.34 in.	8.6 mm
Mounting Hole Depth	Through	
Mounting Hole Quantity	2	
Model Weight	1.47 lb.	0.67 kg.

---

---

---

Option Selection

U.S. Dollar ▼

Aluminum Body Pressure Rating: 3000 psi (210 bar)  
Ductile Iron Body Pressure Rating: 5000 psi (350 bar)

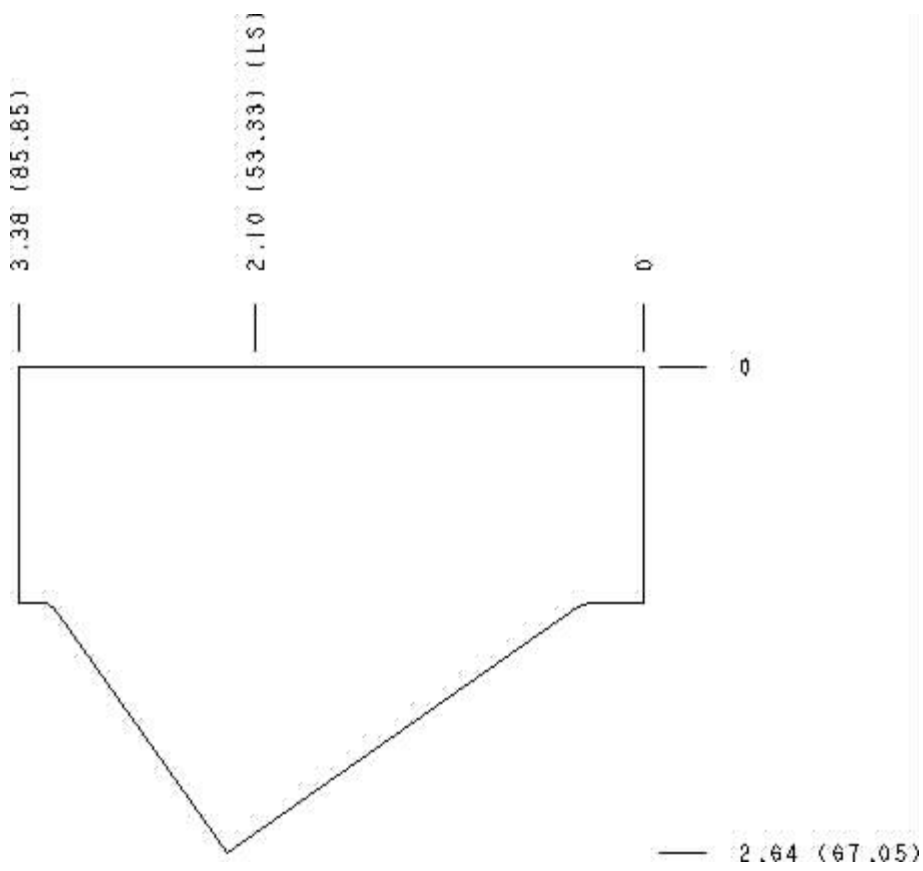
Model Code	Description
XVI	Aluminum, Buna-N, U.S. Units
XVI/S	Ductile Iron, Buna-N, U.S. Units

---

---

Special Notes

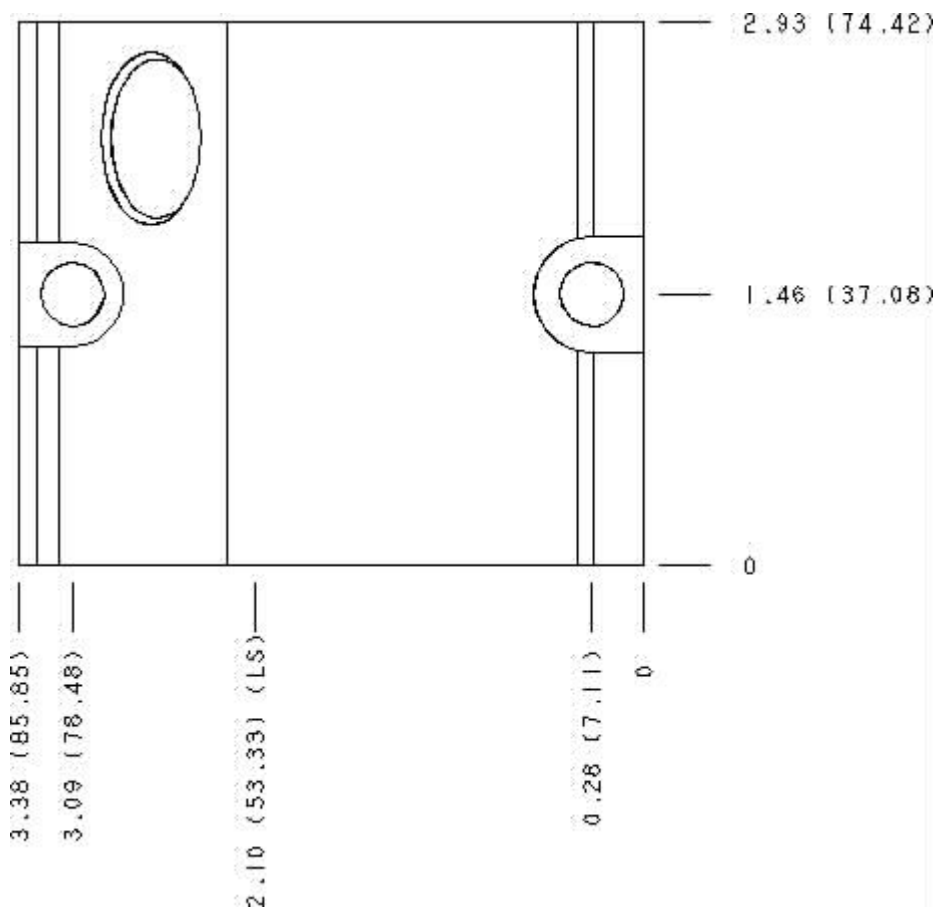
- No Special Notes Available for selected model.
- 
-



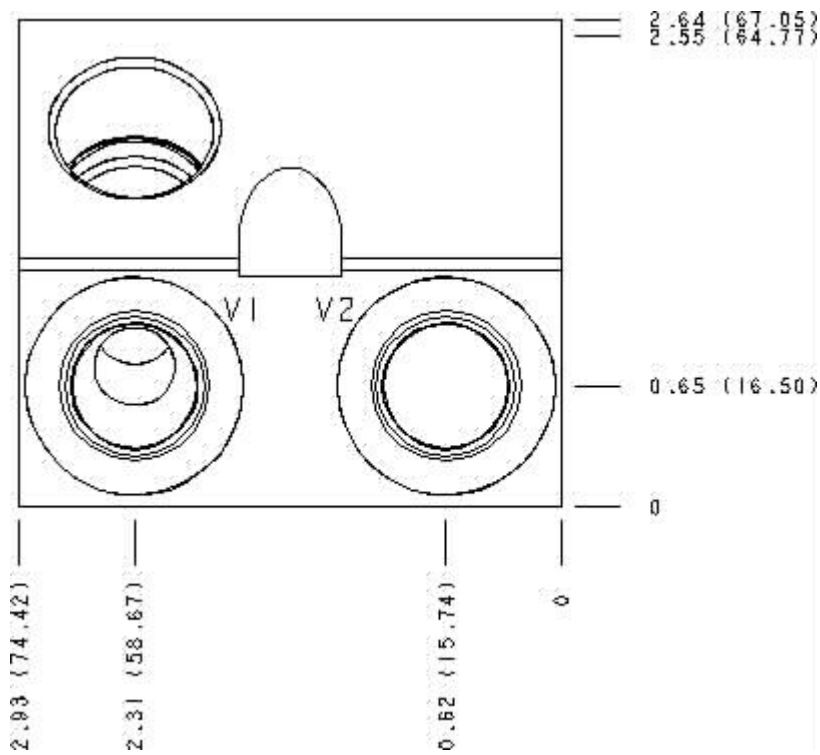
---

Face 6

---



Face 9



Face 11

