

TECHNICAL DATA

| | |
|------------------------|---------------------|
| Body Type | Line mount |
| Interface | None |
| Body Features | Inline, cross pilot |
| Mounting Hole Diameter | .34 in. |
| Mounting Hole Depth | Through |
| Mounting Hole Quantity | 2 |

NOTES *Important:* Carefully consider the maximum system pressure. The pressure rating of the manifold is dependent on the manifold material, with the port type/size a secondary consideration. Manifolds constructed of aluminum are not rated for pressures higher than 3000 psi (210 bar), regardless of the port type/size specified.

PORT DESIGNATORS

| Modifiers | Ports |
|-----------|-------------------|
| XVH | All Ports: SAE 6; |

CONFIGURATION OPTIONS

Model Code Example: XVH

MODIFIER

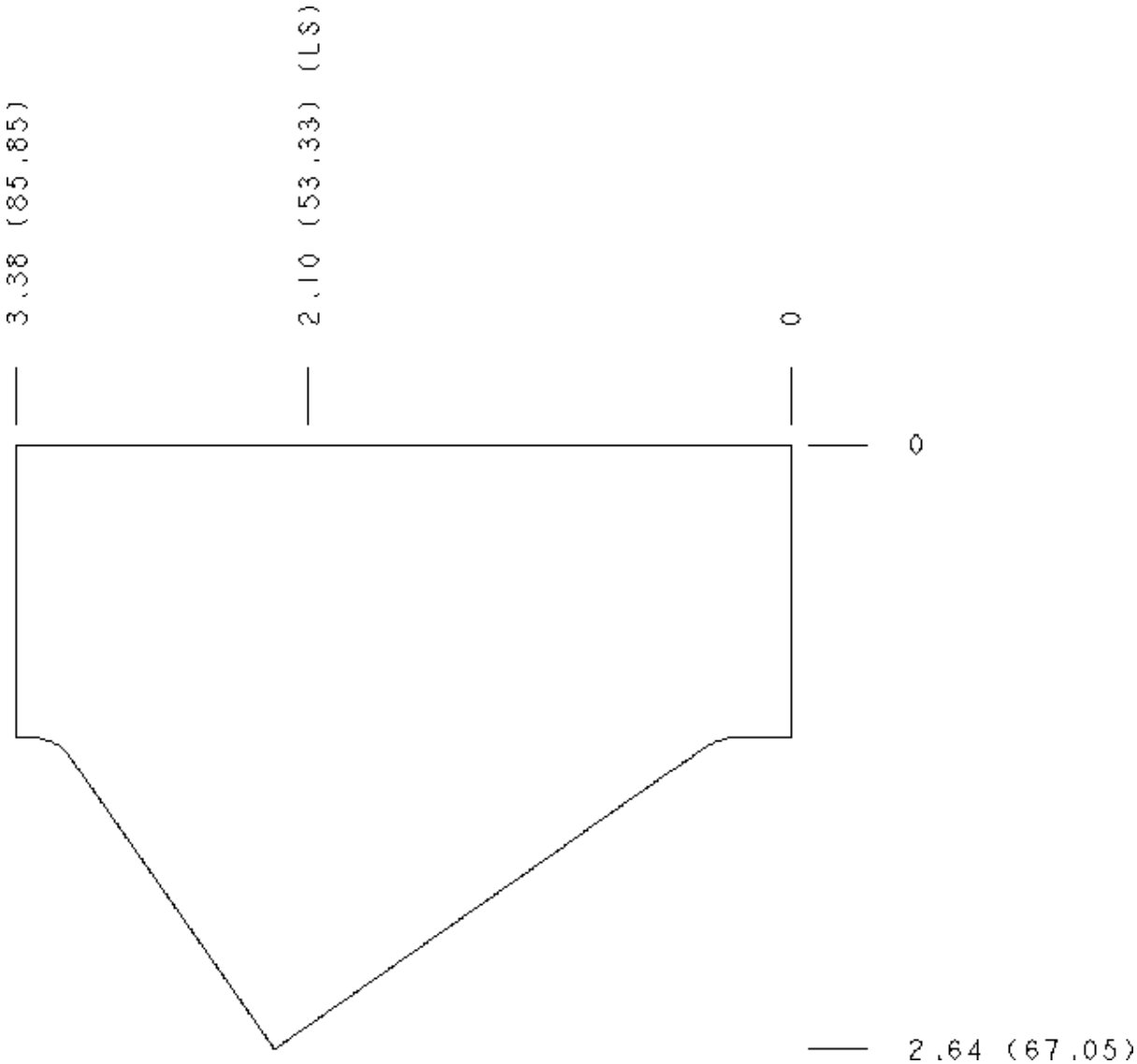
- 6061-T651 Aluminum, Buna-N
- IS 65-45-12 Ductile Iron, Buna-N, Blackened

MANIFOLD FACES

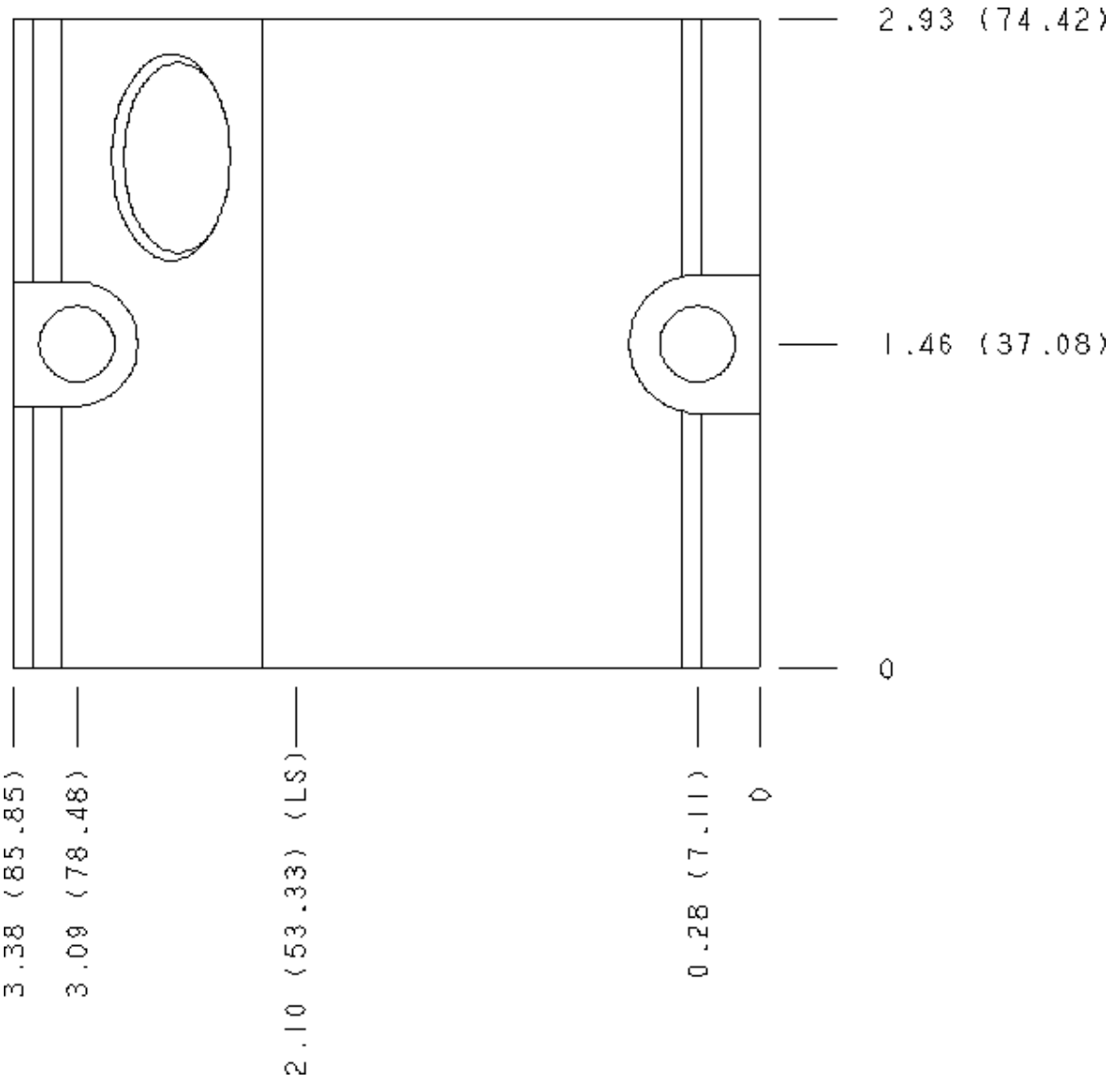
FACE GRID

| | | | |
|---|----|----|----|
| 1 | 2 | 3 | 4 |
| 5 | 6 | 7 | 8 |
| 9 | 10 | 11 | 12 |

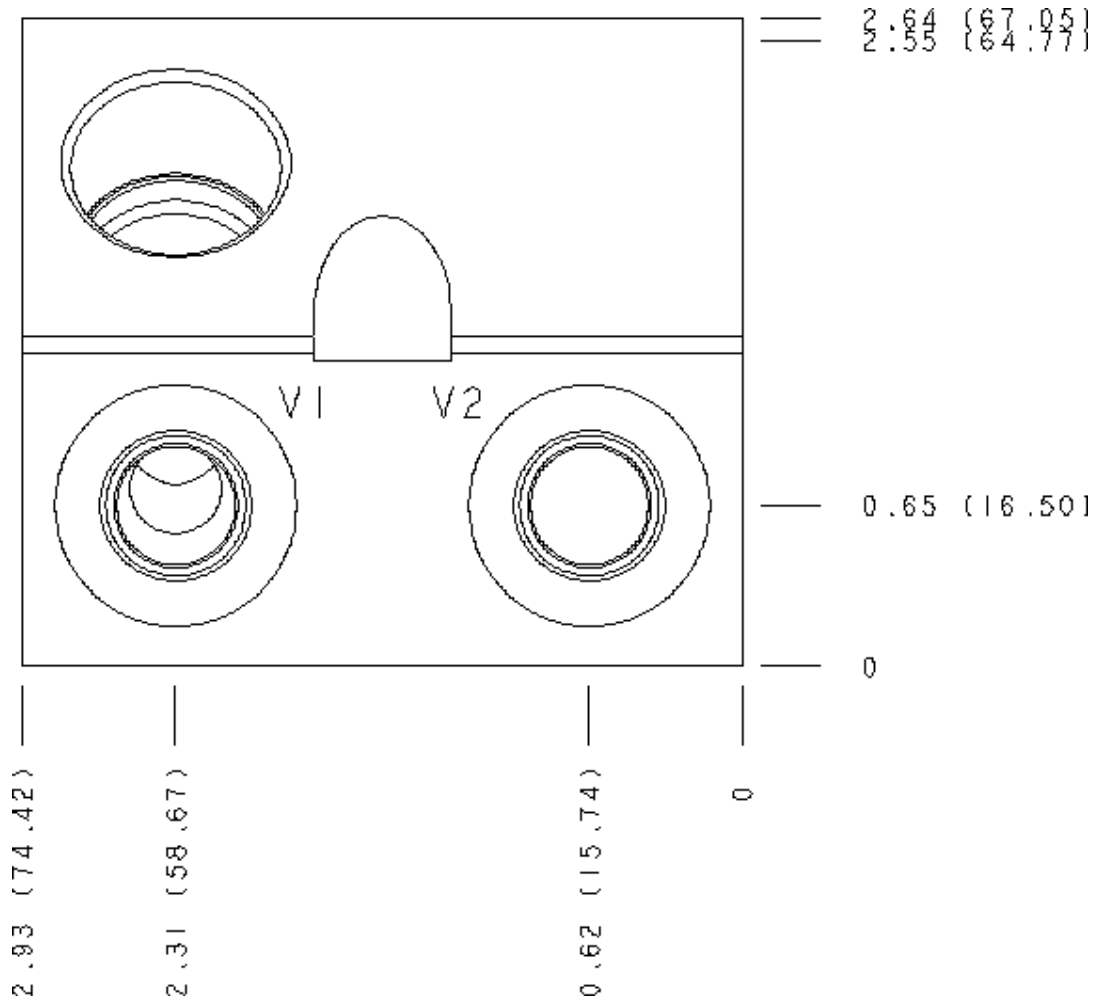
Face 2



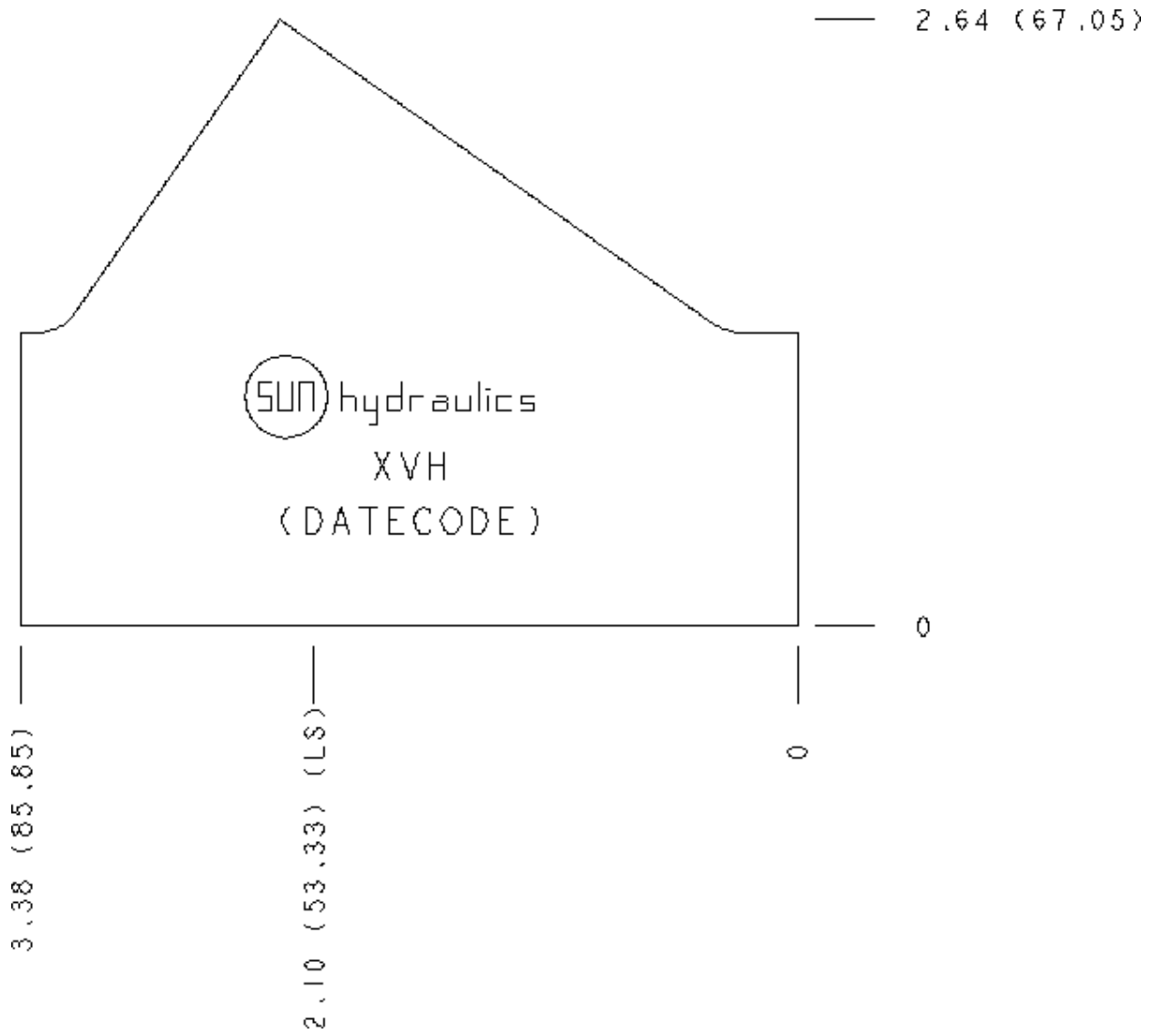
Face 6



Face 9



Face 10



Face 11

