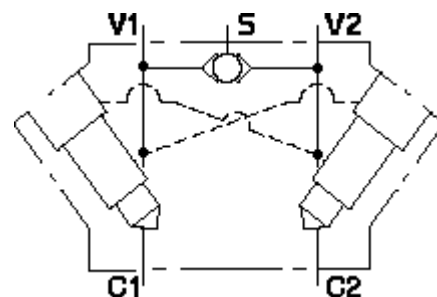


Functional Group:
 Products : Manifolds : Line mount : Counterbalance : 3 Port : Inline, cross pilot with shuttle

Model:
 XGJ

Aluminum Body Pressure Rating: 3000 psi (210 bar)
 Ductile Iron Body Pressure Rating: 5000 psi (350 bar)



Face: 6



Cartridge extension measurement is to the centerline of the cartridge.

Port Headings and Sizes

XGJ Ports C1, C2, V1, V2
XGJ Shuttle Port

SAE 8
SAE 4

Technical Data

	U.S. Units	Metric Units
Model Weight	1.63 lb.	0.74 kg.
Cavity	T-11A	
Body Features	Inline, cross pilot with shuttle	
Body Type	Line mount	
Interface	None	
Open Cavity Quantity	2	
Mounting Hole Diameter	.34 in.	8.6 mm
Mounting Hole Depth	Through	
Mounting Hole Quantity	2	

Option Selection

U.S. Dollar ▼

Model Code	Description
XGJ	Aluminum, Buna-N, U.S. Units
XGJ/V	Aluminum, Viton, U.S. Units
XGJ/S	Ductile Iron, Buna-N, U.S. Units
XGJ/Y	Ductile Iron, Viton, U.S. Units

Display Components

	Description	Quantity
CSAAEXN	Model	1

Special Notes

- No Special Notes Available for selected model.