

All ports open cavity plug

Capacity:

Functional Group:

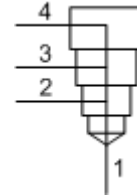
Model:

Products : Accessories : Cavity Plugs : 2 Port Cavities : All Ports Open

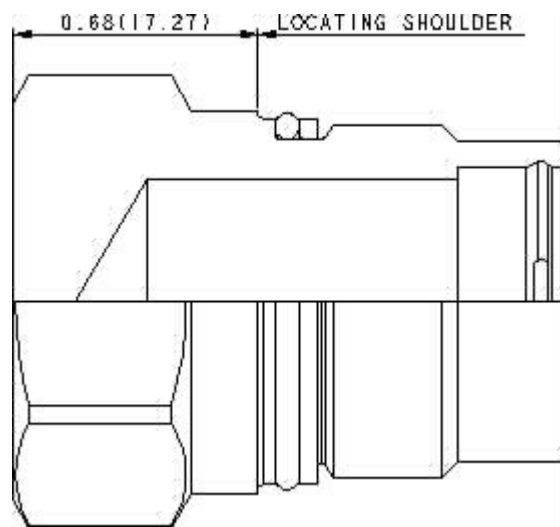
XCOA-XXN

Product Description

These cavity plugs can be used for both two-port (T-10A/T-13A, T-3A/T-5A, T-16A and T-18A) and four-port cavities (T-31A, T-32A, T-33A and T-34) and allow all ports to remain connected.



[Download](#)



Technical Features

- Stainless steel cartridge options P or W are intended for use within corrosive environments with all external components manufactured in stainless steel or titanium. Internal working components remain the same as the standard valves.

Technical Data

| | U.S. Units | Metric Units |
|----------------------------|--------------------|--------------|
| Model Weight | 0.24 lb. | 0.11 kg. |
| Cavity | T-3A, T-5A & T-32A | |
| Maximum Operating Pressure | 5000 psi | 350 bar |
| Series (from Cavity) | Series 2 | |
| Valve Hex Size | 1 1/8 in. | 28,6 mm |
| Valve Installation Torque | 45 - 50 lbf ft | 60 - 70 Nm |
| Seal Kits | Buna: 990-203-007 | |
| Seal Kits | Viton: 990-203-006 | |

XCOA-XXN

Control

Adjustment Range

External Material/Seal
Material

X - +0.00

X - +0.00

N Buna-N +0.00

If the material/seal is P, the control must be X
If the material/seal is W, the control must be X

Copyright © 2007-2008 Sun Hydraulics Corporation. All rights reserved.
Terms and Conditions - ISO Certification - Statement of Privacy