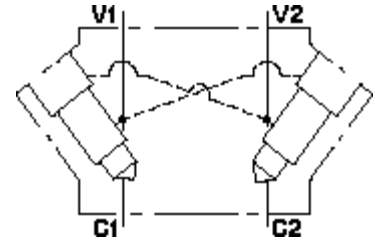


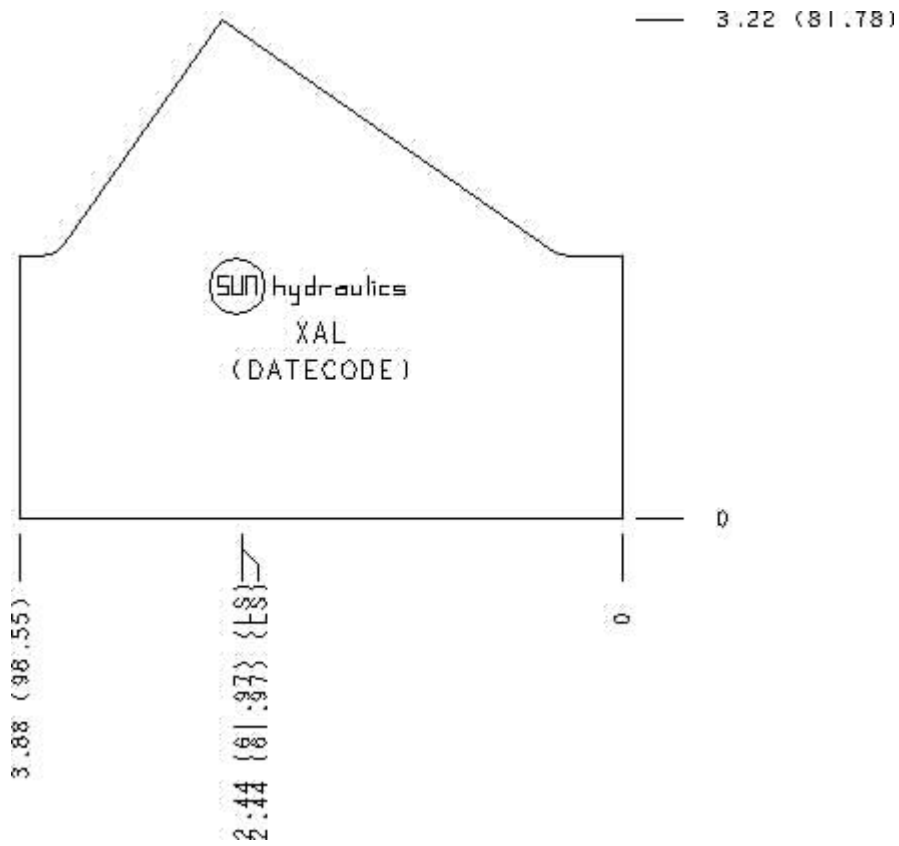
Functional Group:
 Products : Manifolds : Line mount : Counterbalance : 3 Port : 2 Cavity, Inline, cross pilot

Model:
 XAL

Aluminum Body Pressure Rating: 3000 psi (210 bar)
 Ductile Iron Body Pressure Rating: 5000 psi (350 bar)



Face: 10



Cartridge extension measurement is to the centerline of the cartridge.

Port Headings and Sizes

XAL All Ports SAE 12

Technical Data

	U.S. Units	Metric Units
Model Weight	2.45 lb.	1.11 kg.
Cavity	T-2A	
Body Features	Inline, cross pilot	

Body Type	Line mount	
Interface	None	
Open Cavity Quantity	2	
Mounting Hole Diameter	.34 in.	8.6 mm
Mounting Hole Depth	Through	
Mounting Hole Quantity	2	

Option Selection

U.S. Dollar ▼

Model Code	Description
XAL	Aluminum, Buna-N, U.S. Units
XAL/S	Ductile Iron, Buna-N, U.S. Units

Special Notes

- No Special Notes Available for selected model.