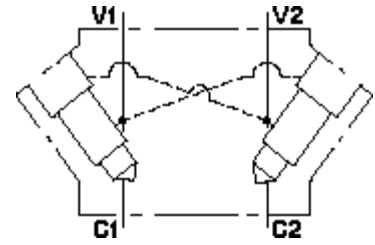


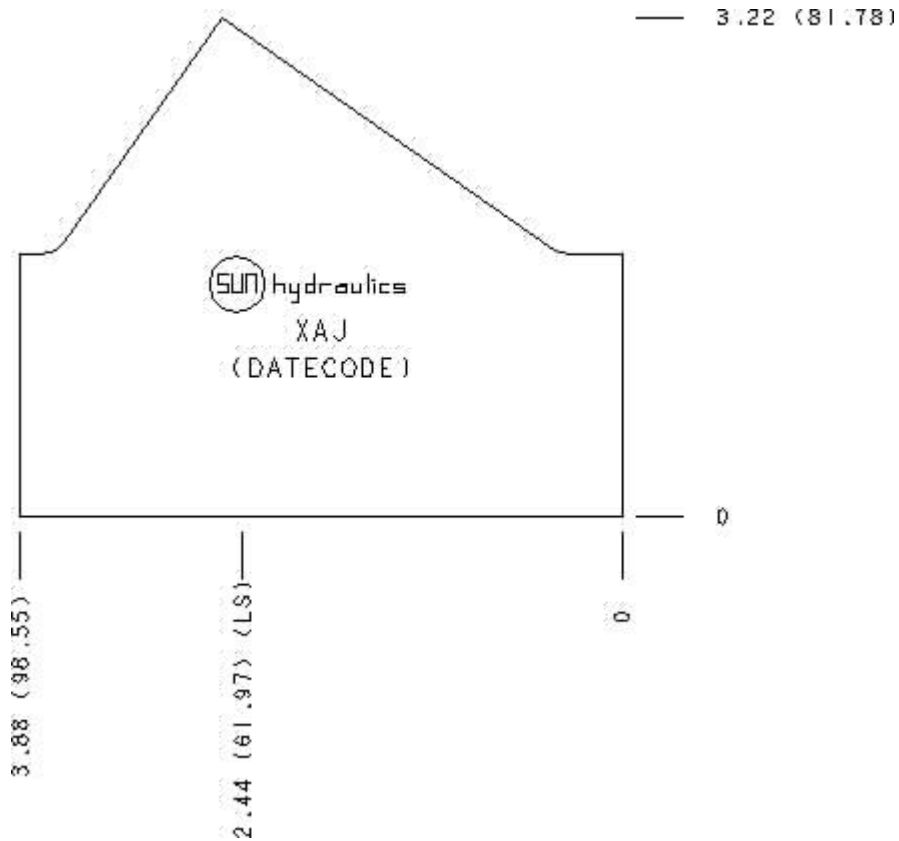
Functional Group:
 Products : Manifolds : Line mount : Counterbalance : 3 Port : 2 Cavity, Inline, cross pilot

Model:
 XAJ

Aluminum Body Pressure Rating: 3000 psi (210 bar)
 Ductile Iron Body Pressure Rating: 5000 psi (350 bar)



Face: 10



Cartridge extension measurement is to the centerline of the cartridge.

Port Headings and Sizes

XAJ All Ports SAE 8

Technical Data

	U.S. Units	Metric Units
Model Weight	2.63 lb.	1.19 kg.
Cavity	T-2A	

Body Features	Inline, cross pilot	
Body Type	Line mount	
Interface	None	
Open Cavity Quantity	2	
Mounting Hole Diameter	.34 in.	8.6 mm
Mounting Hole Depth	Through	
Mounting Hole Quantity	2	

Option Selection

U.S. Dollar 

Model Code	Description
XAJ	Aluminum, Buna-N, U.S. Units
XAJ/S	Ductile Iron, Buna-N, U.S. Units

Special Notes

- No Special Notes Available for selected model.