



P U M P S

WPA A Flange Gear Pumps Specifications & Dimensional Data

WPA 08 A 4 R

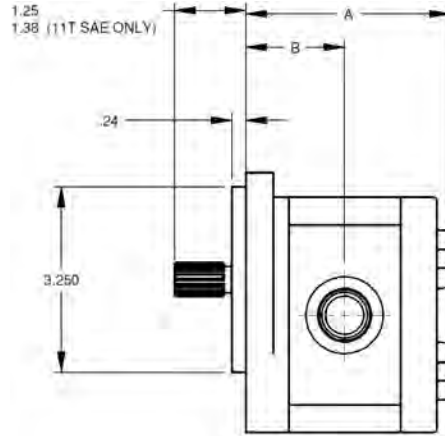
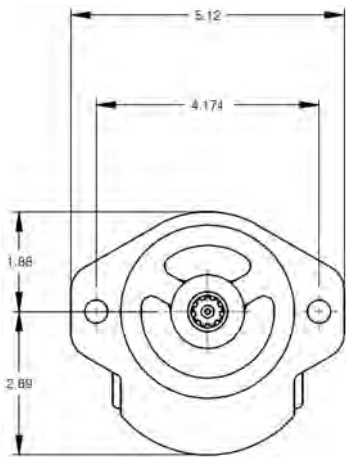
DISPLACEMENT CODE	CC / REV	CU. IN. / REV	CONTINUOUS PSI	RATED SPEED (RPM)	INLET PORT SIZE	OUTLET PORT SIZE	"A"	"B"
04	4.6	0.27	3600	4000	#12 SAE	#10 SAE	3.50	1.68
06	6.5	0.40	3600	4000	#12 SAE	#10 SAE	3.60	1.73
08	8.2	0.50	3600	3500	#12 SAE	#10 SAE	3.62	1.79
10	10.6	0.65	3600	3500	#12 SAE	#10 SAE	3.73	1.86
11	11.5	0.68	3600	3500	#12 SAE	#10 SAE	3.87	1.92
12	12.5	0.77	3600	3500	#12 SAE	#10 SAE	3.93	1.95
14	13.8	0.84	3600	3500	#12 SAE	#10 SAE	4.00	2.00
16	16.6	1.01	3600	3000	#12 SAE	#10 SAE	4.15	2.08
19	19.4	1.18	3200	3000	#12 SAE	#10 SAE	4.31	2.24
23	22.9	1.37	2900	2750	#12 SAE	#10 SAE	4.63	2.34
26	25.8	1.58	2600	2500	#12 SAE	#10 SAE	4.84	2.46

ROTATION (FACING END OF SHAFT)	
L	(COUNTER CLOCKWISE)
R	(CLOCKWISE)

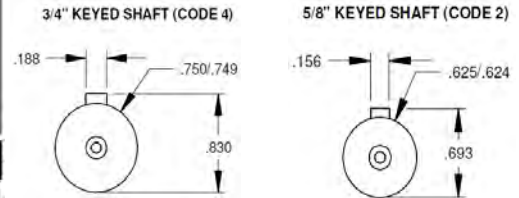
SHAFT CODE	SHAFT TYPE
9	9 T SAE SPLINE
2	SAE 5/8" STRAIGHT KEYED
3	11 T SAE SPLINE
4	3/4" STRAIGHT KEYED

PORT LOCATION CODE	PORT LOCATION
A	SIDE INLET AND OUTLET
C*	BOTH SIDE AND REAR PORTS W/ STEEL PLUGS
D*	REAR INLET AND OUTLET

* ADD 0.35" FOR LENGTH "A" FOR REAR PORTS



SHAFT OPTIONS



SPLINED SHAFT OPTIONS

- | | |
|---|--|
| SHAFT CODE 9
9 TOOTH SAE
16/32 DP
30° PA | SHAFT CODE 3
11 T SAE
16/32 DP
30° PA |
|---|--|

WPA Performance Data

MODEL		RPM								PRESSURE (PSI)
		500	1000	1500	2000	2500	3000	3500	4000	
WPA06	FLOW (GPM)	0.73	1.54	2.37	3.16	3.99	4.84	5.65	6.45	3600
	INPUT HP	2.07	4.13	6.20	8.26	10.33	12.39	14.46	16.52	
WPA08	FLOW (GPM)	0.92	1.95	2.99	3.98	5.03	6.10	7.12		
	INPUT HP	2.61	5.21	7.82	10.42	13.03	15.63	18.24		
WPA10	FLOW (GPM)	1.19	2.52	3.86	5.15	6.51	7.89	9.21		
	INPUT HP	3.37	6.74	10.11	13.47	16.84	20.21	23.58		
WPA11	FLOW (GPM)	1.32	2.79	4.28	5.71	7.22	8.76	10.21		
	INPUT HP	3.74	7.47	11.21	14.95	18.69	22.42	26.16		
WPA14	FLOW (GPM)	1.55	3.28	5.03	6.70	8.47	10.27	11.99		
	INPUT HP	4.39	8.77	13.16	17.54	21.93	26.31	30.70		
WPA16	FLOW (GPM)	1.86	3.94	6.05	8.06	10.19	12.36			
	INPUT HP	5.28	10.55	15.83	21.10	26.38	31.65			
WPA19	FLOW (GPM)	2.18	4.61	7.07	9.42	11.91	14.44			
	INPUT HP	5.43	10.85	16.28	21.70	27.13	32.55			
WPA23	FLOW (GPM)	2.57	5.44	8.34	11.12	14.06				
	INPUT HP	5.82	11.64	17.46	23.29	29.11				
WPA26	FLOW (GPM)	2.89	6.13	9.40	12.53	15.84				
	INPUT HP	5.90	11.81	17.71	23.61	29.51				