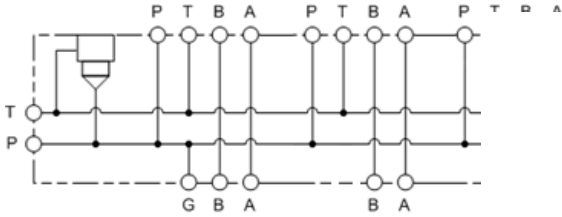


MODEL
VPW

3 Station, Parallel circuit with relief cavity
CAVITY: T-3A



CONFIGURATION

(none) Modifier 6061-T651 Aluminum, Buna-N

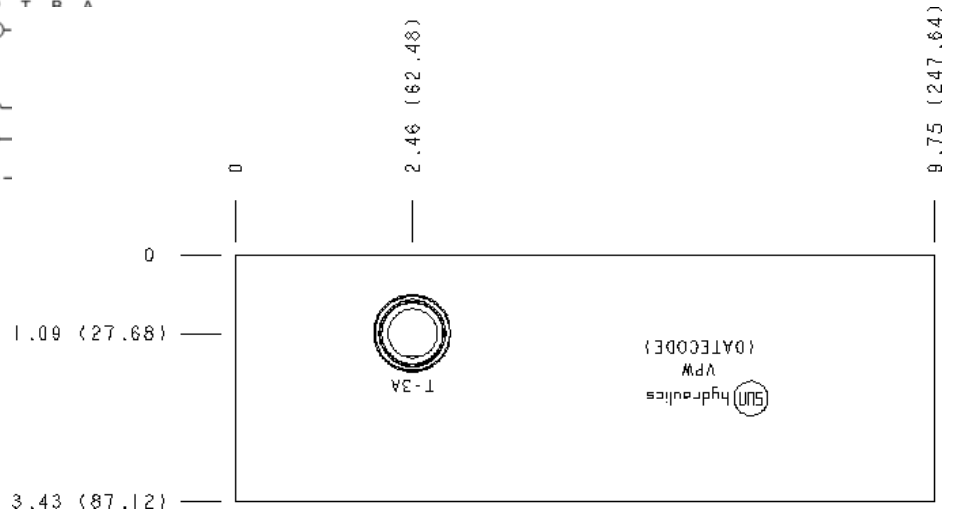
PORT HEADINGS AND SIZES

Model	Port Heading	Size
VPW	Ports A & B	SAE 8
VPW	Ports P & T	SAE 12
VPW	Gage Port	SAE 4

NOTES

For mounting bracket information, see catalog or drawing 991-020-***

Important: Carefully consider the maximum system pressure. The pressure rating of the manifold is dependent on the manifold material, with the port type/size a secondary consideration. Manifolds constructed of aluminum are not rated for pressures higher than 3000 psi (210 bar), regardless of the port type/size specified.



TECHNICAL DATA

Body Type	Bar Manifold
Interface	ISO 05
Body Features	3 Station, Parallel circuit with relief cavity
Mounting Hole Thread	M8x1.25 - 6H
Mounting Hole Depth	.44 in.
Mounting Hole Quantity	4
Open Cavities	1
Cavity	T-3A
Port Size	SAE 8

CONFIGURATION OPTIONS

MODIFIER

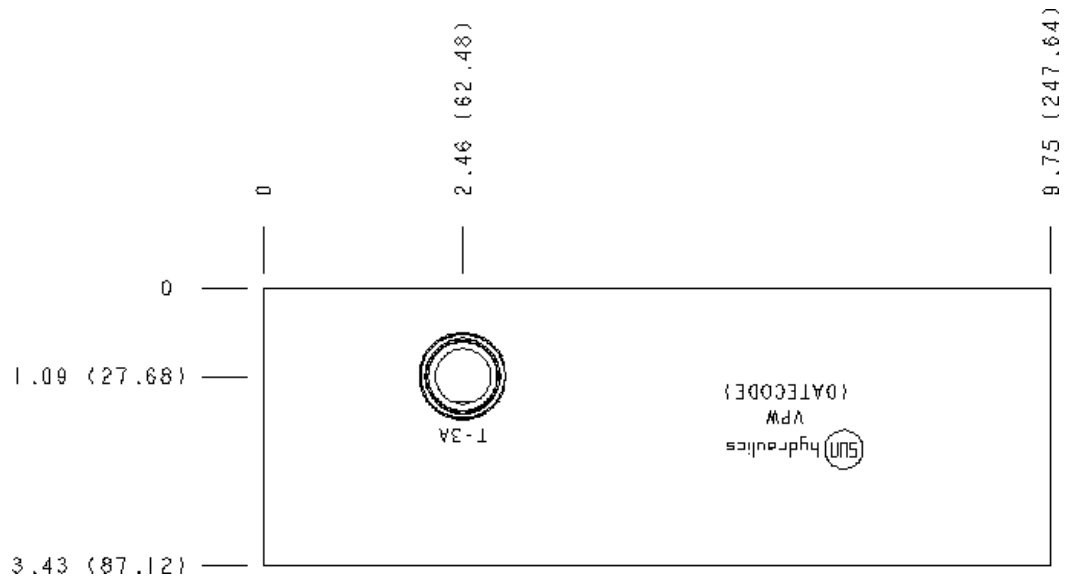
Standard Options	/S	6061-T651 Aluminum, Buna-N
		65-45-12 Ductile Iron, Buna-N, Blackened

MANIFOLD FACES

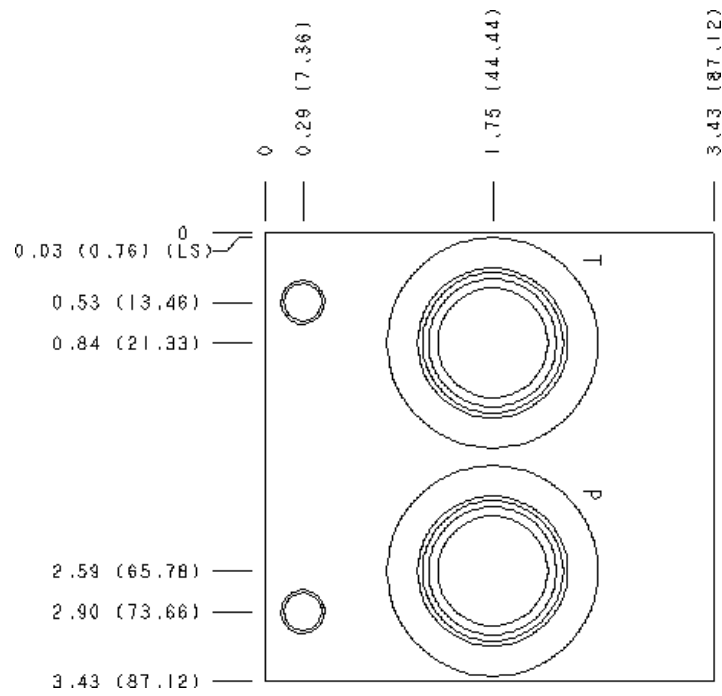
FACE GRID

1	2	3	4
5	6	7	8
9	10	11	12

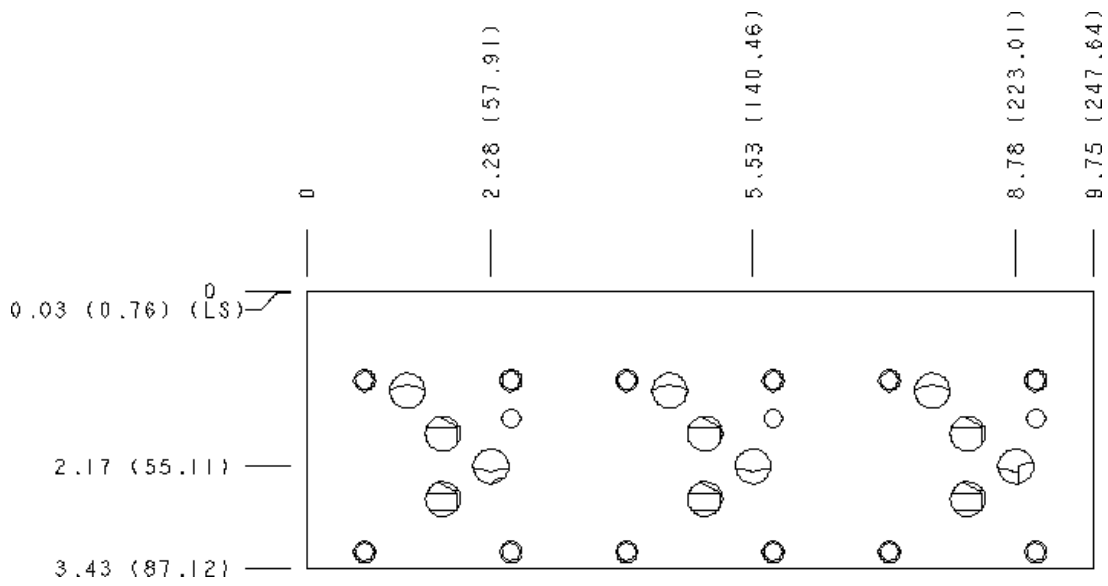
Face 2



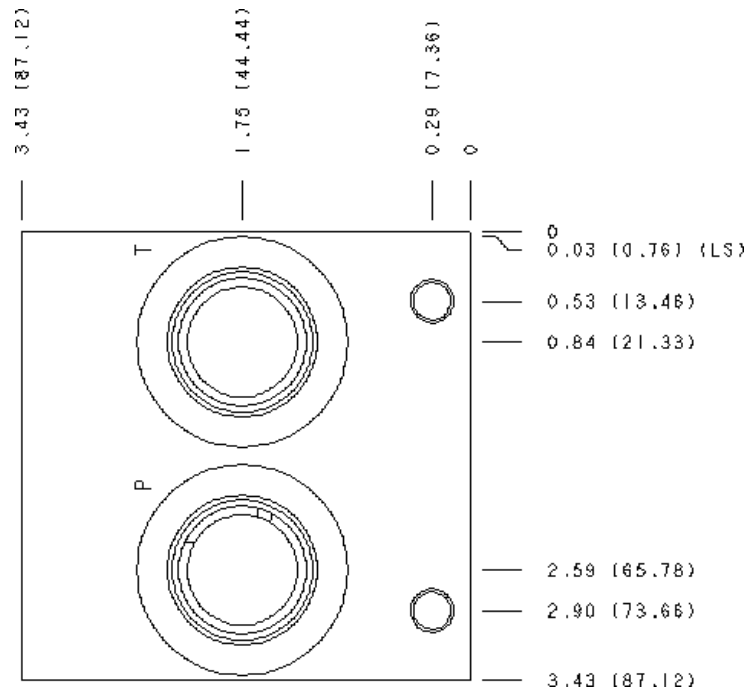
Face 5



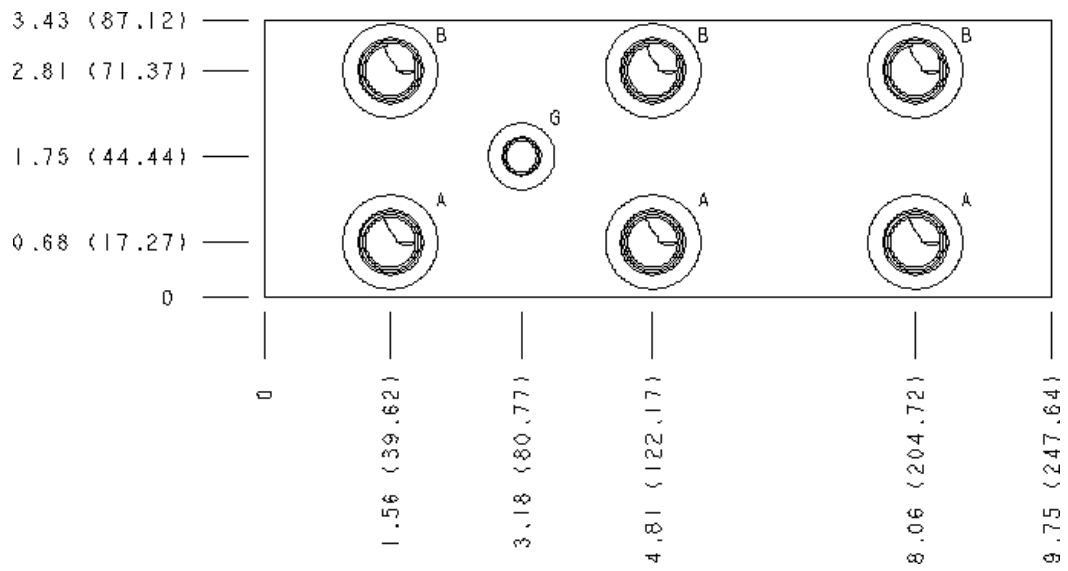
Face 6



Face 7



Face 10



Copyright © 2002-2014 Sun Hydraulics Corporation. All rights reserved.