



PRODUCT LISTING

Reservoir Section

| | |
|--|--------|
| Reservoir Information | 1-2 |
| Installed Couplings and Return Lines | 3 |
| J.I.C. Type Reservoirs Style A | 4-5 |
| J.I.C. Jumbo Reservoirs | 6 |
| J.I.C. Type Reservoirs Style B | 7 |
| J.I.C. Type Reservoirs Style RB (Removable Baffle) | 8 |
| J.I.C. Type Reservoirs Style RT (Removable Top) | 9 |
| J.I.C. Type Reservoirs Style RT (Cover Plates) | 10 |
| “L” Shaped Reservoirs Style C | 11 |
| “L” Shaped Reservoirs Style D | 12 |
| “L” Shaped Reservoirs Style F | 13 |
| “T” Shaped Reservoirs | 14 |
| D.I.N. Type Reservoirs | 15-18 |
| Vertical Non-J.I.C. Type Reservoirs | 19, 21 |
| Cover Plates | 20, 22 |
| Dual Vertical Non-J.I.C. Type Reservoirs | 23 |
| Horizontal Non-J.I.C. Type Reservoirs | 24-26 |
| Vari-Pak Reservoirs | 27-29 |
| Custom Reservoirs | 30 |
| Aluminum Reservoirs | 31-32 |
| Containment Trays and Stands | 33-34 |
| Overhead Reservoir Bases | 35-39 |

Hydraulic Accessories Section

| | |
|---|-------|
| Motor Base Plates | 40 |
| Mounting Plates and Coupling Guards | 41 |
| Sight Gauges | 42 |
| Tank Magnets | 43-44 |
| Suction/Return Flanges, Grommets & Risers | 45-47 |
| Filler/Air Breathers | 48-56 |

Hydraulic Accessories Section (continued)

| | |
|-------------------------------|---------|
| Accumulator Brackets & Clamps | 57-58 |
| End Covers | 59-61 |
| Heaters/Coolers | 62-64 |
| SAE Couplings | 65-67 |
| SAE Flanges | 68-76 |
| Cushion Clamps | 77-80 |
| Gear Pumps | 81-84 |
| Strainers/Diffusers | 85-88 |
| Pressure Gauges | 89-90 |
| Ball Valves | 91-93 |
| Hydraulic Filters | 94-120 |
| Clogging Indicators | 121-122 |
| Replacements Parts | 123-124 |

Pump Motor Adapter / Dampening Flange Section

| | |
|-------------------------------|---------|
| Adapters for Electric Motors | 125-141 |
| Motor Spacers | 142 |
| Vertical Mounting Rings | 143 |
| Vertical Dampening Rings | 144 |
| Vertical Info/Selection Guide | 145-146 |
| Foot Mount Brackets | 147-148 |
| Dampening Flanges | 149-155 |
| Adapter Program | 156 |
| Dampening Bars | 157-160 |
| Gas Engine Adapters | 161-166 |
| Flexible Jaw Couplings | 167-179 |
| Flexible Drive Couplings | 180-184 |

New Product Section

| | |
|-----------------------------|---------|
| Needle Valves/Flow Controls | 185-187 |
|-----------------------------|---------|



FACTS TO CONSIDER ON HYDRAULIC RESERVOIRS

SIZING

Folklore rules of thumb proclaim that the reservoir should be from 2 to 5 times the size of the pump GPM. For example: a 20 GPM pump should have a reservoir of 40 to 100 gallon capacity. However, this rule of thumb may not necessarily be true, especially if heat exchangers are used. With a heat exchanger the reservoir could be as small as one times the size of the pump GPM. Some closed loop systems require virtually no reservoir at all.

The accurate method for sizing a reservoir is to determine the heat balance for your hydraulic system. Try to accurately determine the amount of heat that will be generated through lost work, then determine the reservoir space available and how much heat can be dissipated in that space. From these calculations the necessity and size of the heat exchanger and the proper size of the reservoir can be determined.

INDOOR or OUTDOOR

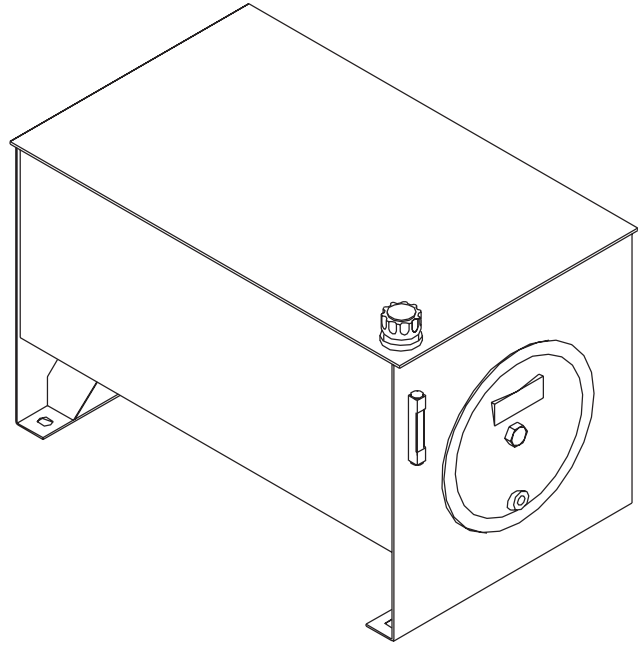
Reservoirs for indoor service usually have rubber grommets in the top plates for sealing suction and return lines. These grommets are not water tight. For outdoor reservoirs, welded couplings are used to seal the suction and return lines from weather and foreign fluids. For reservoirs requiring wash downs, welded couplings should also be used to prevent wash fluids from entering the tank.

Tank heaters are essential in cold climates. The most common heaters used are electrical immersion heaters. Most of them require a welded coupling in the tank side for installation. Sizing of the immersion heaters falls into two categories.

1. Sizing the immersion heater for maintaining the oil temperature when the pump is not running.

For sizing the immersion heater to maintain the oil temperature, calculate the total surface area of the tank (include all four sides plus top and bottom) in square feet. Then use the following approximate formula for heat transfer between a steel surface and surrounding air:

$$WATTS = 0.01 \times \text{AREA OF TANK (SQUARE FEET)} \times \text{TEMPERATURE DIFFERENCE(°F)}$$



2. Sizing the immersion heater to heat the hydraulic oil to pump suction temperature requirements in a given time.

For sizing the immersion heater to heat the hydraulic oil. Use the following rule of thumb:

ONE WATT WILL HEAT ONE GALLON ONE °F IN ONE HOUR

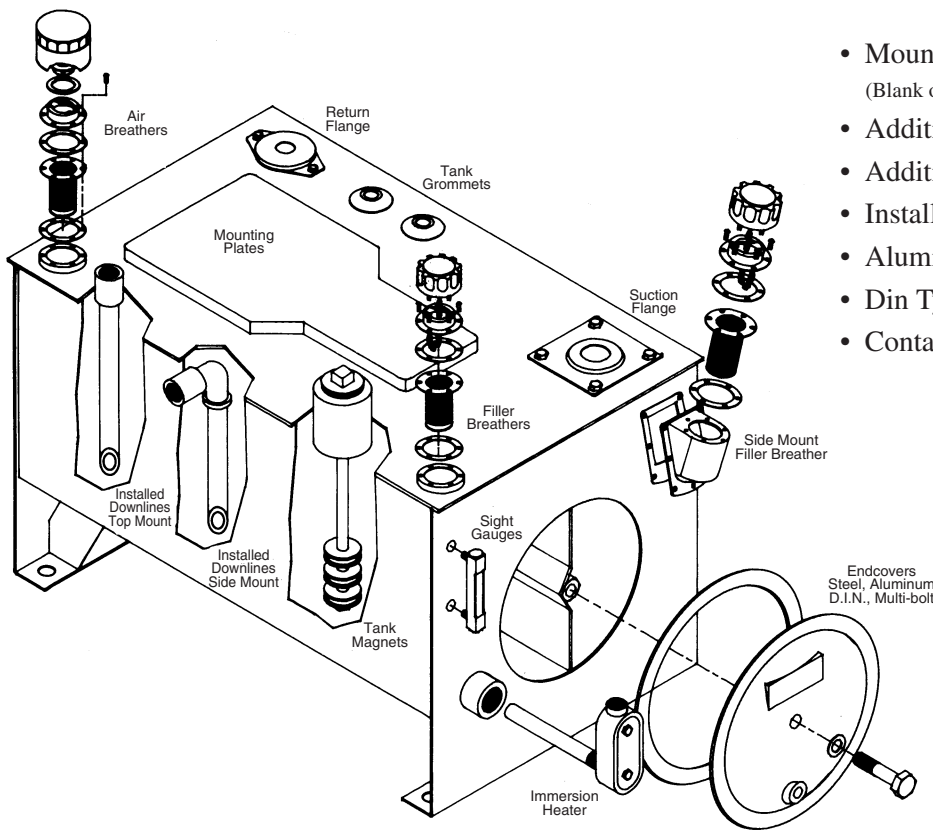
Location of the reservoir is important. Adequate air circulation should be provided. For outdoor location, shield the tank from direct sun radiation and protect it from weather, if possible. For indoor location shield the tank from furnace and steam lines and other radiation. The reservoir can be painted white to help reflect radiant heat or painted black to help radiate heat from tank to atmosphere.

You will note that no discussion of the sizing of cooling heat exchangers is given here. Most full line hydraulic manufacturers and distributors have complete data for sizing. If you require information for your specific needs and cannot obtain assistance, contact us and we will help you.



VESCOR RESERVOIRS

AVAILABLE OPTIONS FROM VESCOR®



- Mounting Plates
(Blank or Drilled and Tapped to your specifications)
- Additional Sight Gauges
- Additional Filler Breathers
- Installed Couplings
- Aluminum Endcovers
- Din Type Endcovers
- Containment Trays/Stand

IMPORTANT FEATURES / STANDARD EQUIPMENT

- All VESCOR J.I.C. Reservoirs meet all J.I.C., N.F.P.A., and A.S.L.E. standards
- All VESCOR Reservoirs are skillfully fabricated from hot rolled steel plate and sheet. All steel is pickled and oiled which eliminates the need for sandblasting.
- Stationery baffles are properly slotted providing correct oil circulation.
- Single bolt endcovers provide the maximum opening for cleanout of reservoir.
- All VESCOR Reservoirs include sight gauge with thermometer and filler breather as standard equipment.
- Endcovers include bayonet gasket for positive seal.
- Reservoir exterior prime painted.

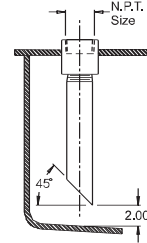
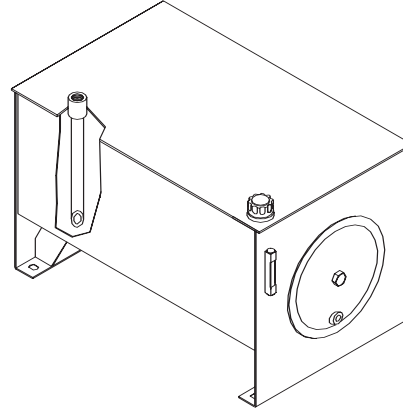


INSTALLED COUPLINGS and RETURN LINES

Basic Top Mount

Benefits:

- Customer specified locations
- Customer specified sizes
- No cutting of holes to install couplings
- Low cost
- Rapid assembly of power unit

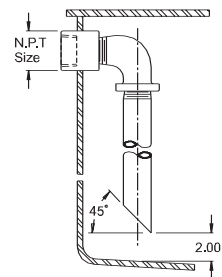
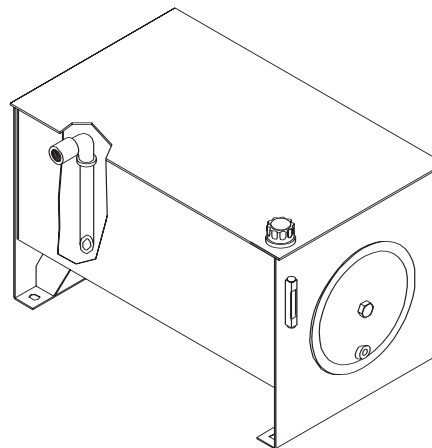


| Reservoir Size (gals) | Return Lines Available with Schedule 40 Pipe | | | | | | | |
|-----------------------|--|------------------|----------------|--------------------|--------------------|----------------|--------------------|----------------|
| | 1/2" NPT #8 SAE | 3/4" NPT #10 SAE | 1" NPT #12 SAE | 1-1/4" NPT #14 SAE | 1-1/2" NPT #16 SAE | 2" NPT #20 SAE | 2-1/2" NPT #24 SAE | 3" NPT #32 SAE |
| 10 to 20 | • | • | • | | | | | |
| 30 to 40 | • | • | • | • | | | | |
| 50 to 60 | • | • | • | • | • | | | |
| 80 to 100 | | • | • | • | • | • | | |
| 120 to 150 | | | • | • | • | • | • | |
| 200 and up | | | • | • | • | • | • | • |

Basic Side Mount

Benefits:

- Customer specified locations
- Customer specified sizes
- No cutting of holes to install couplings
- Low cost
- Rapid assembly of power unit

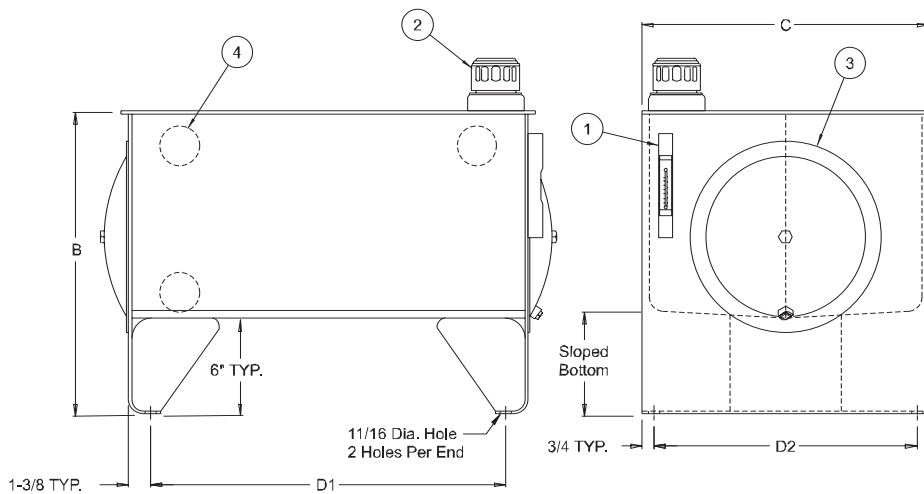
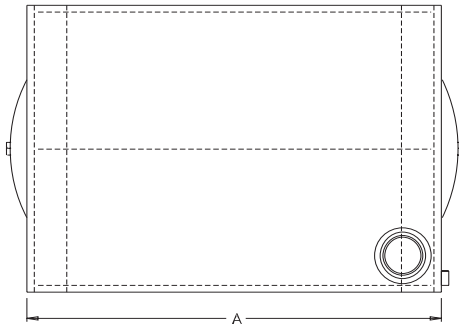
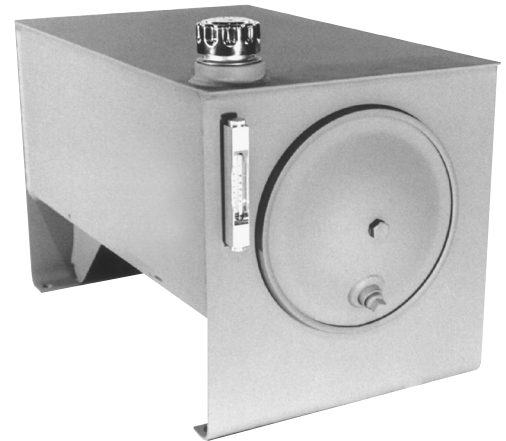


| Reservoir Size (gals) | Return Lines Available with Schedule 40 Pipe | | | | | | | |
|-----------------------|--|------------------|----------------|--------------------|--------------------|----------------|--------------------|----------------|
| | 1/2" NPT #8 SAE | 3/4" NPT #10 SAE | 1" NPT #12 SAE | 1-1/4" NPT #14 SAE | 1-1/2" NPT #16 SAE | 2" NPT #20 SAE | 2-1/2" NPT #24 SAE | 3" NPT #32 SAE |
| 10 to 20 | • | • | • | | | | | |
| 30 to 40 | • | • | • | • | | | | |
| 50 to 60 | • | • | • | • | • | | | |
| 80 to 100 | | • | • | • | • | • | | |
| 120 to 150 | | | • | • | • | • | • | |
| 200 and up | | | • | • | • | • | • | • |



J.I.C. TYPE RESERVOIRS

Style A



Each Style A Reservoir Includes:

1. (1) Oil Level & Temp. Gauge
2. (1) Riser with Filler Breather
3. (2) Steel Endcovers with Gaskets
*(1) Endcover includes 3/4" NPT Drain
4. Baffle with cutouts for circulation
5. Exterior of reservoir prime painted
6. Interior of reservoir coated with rust preventive oil

Sight Gauge

10 to 200 gallon - 5" sight gauge (ALG5T)
300 gallon and up - 10" sight gauge (FMALG10T)

Filler Breather

Bayonet Style - 40 micron (5201)

Sight Gauge and Filler Breather shipped loose inside reservoir

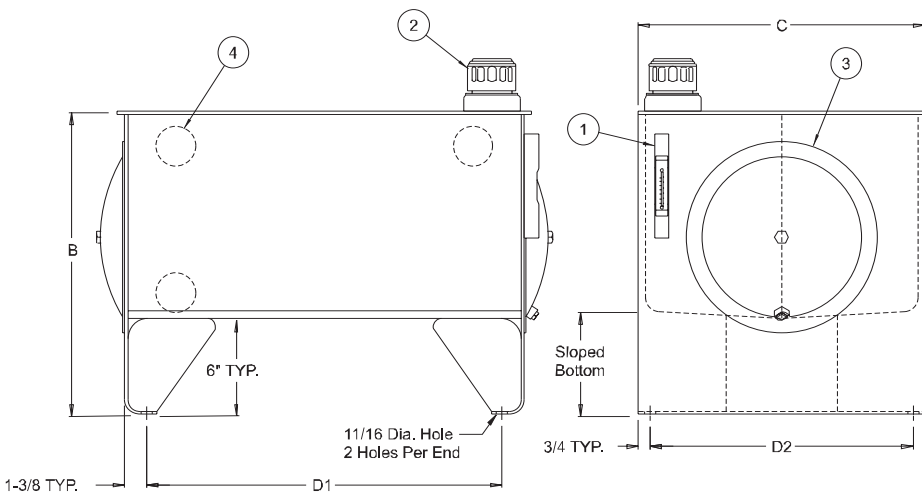
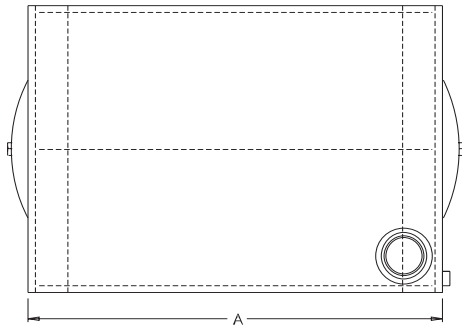
| Capacity Gallons | Vescor Part Number | Tank Dimensions (inches) | | | | | End Cover | Material Thickness | | Shipping Weight |
|------------------|--------------------|--------------------------|----------|---------|---------------------------|---------------------------|-----------|--------------------|-------|-----------------|
| | | A Length | B Height | C Width | Mounting Centers D1 ±1/8" | Mounting Centers D2 ±1/8" | | End | Top | |
| 10 | 10010 | 22" | 19" | 18" | 18 1/4" | 16 1/2" | 12" | 7 GA. | 7 GA. | 105# |
| 15 | 10015 | 26" | 19" | 18" | 22 1/4" | 16 1/2" | 12" | 7 GA. | 7 GA. | 105# |
| 20 | 10020 | 30" | 19" | 18" | 26 1/4" | 16 1/2" | 12" | 7 GA. | 7 GA. | 124# |
| 30 | 10030 | 36" | 19 3/8" | 24" | 32 1/4" | 22 1/2" | 12" | 7 GA. | 7 GA. | 178# |
| 40 | 10040 | 36" | 21" | 24" | 32 1/4" | 22 1/2" | 12" | 7 GA. | 7 GA. | 190# |
| 50 | 10050 | 36" | 23" | 24" | 32 1/4" | 22 1/2" | 16" | 7 GA. | 7 GA. | 200# |
| 60 | 10060 | 48" | 20 9/16" | 27" | 44 1/4" | 25 1/2" | 16" | 7 GA. | 1/4" | 266# |
| 80 | 10080 | 60" | 21 1/2" | 27" | 56 1/4" | 25 1/2" | 16" | 7 GA. | 3/8" | 398# |
| 100 | 100100 | 60" | 23 1/2" | 27" | 56 1/4" | 25 1/2" | 16" | 7 GA. | 3/8" | 418# |
| 120 | 100120 | 60" | 27" | 30" | 56 1/4" | 28 1/2" | 16" | 3/8" | 3/8" | 616# |
| 150 | 100150 | 60" | 31" | 30" | 56 1/4" | 28 1/2" | 16" | 3/8" | 3/8" | 681# |
| 200 | 100200 | 72" | 29 3/8" | 36" | 68 1/4" | 34 1/2" | 18" | 3/8" | 3/8" | 908# |
| 300 | 100300 | 72" | 38 1/2" | 36" | 68 1/4" | 34 1/2" | 18" | 3/8" | 3/8" | 999# |
| 400 | 100400 | 72" | 38 1/2" | 48" | 68 1/4" | 46 1/2" | 18" | 3/8" | 1/2" | 1578# |
| 500 | 100500 | 72" | 43" | 48" | 68 1/4" | 46 1/2" | 18" | 3/8" | 1/2" | 1733# |
| 600 | 100600 | 96" | 43" | 48" | 92 1/4" | 46 1/2" | 18" | 3/8" | 1/2" | 1838# |
| 700 | 100700 | 96" | 49" | 48" | 92 1/4" | 46 1/2" | 18" | 3/8" | 1/2" | 1996# |

NOTE: WITH VESCORS' POLICY OF CONSTANTLY IMPROVING ITS PRODUCTS, SPECIFICATIONS ARE SUBJECT TO CHANGE WITHOUT NOTICE.



J.I.C. TYPE RESERVOIRS

Style A Stainless Steel



Each Stainless Steel Style A

Reservoir Includes:

1. (1) Oil Level & Temp. Gauge
2. (1) Riser with Filler Breather
3. (2) Stainless Steel Endcovers with Gaskets
*(1) Endcover includes 3/4" NPT Drain
4. Baffle with cutouts for circulation
5. Material - 304 Stainless Steel

Sight Gauge

10 to 200 gallon - 5" sight gauge (ALG5T)
300 gallon and up - 10" sight gauge (FMALG10T)

Filler Breather

Bayonet Style - 40 micron (5201)

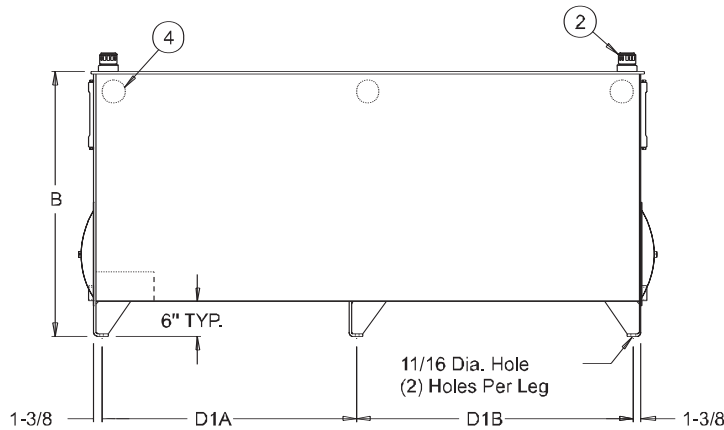
Note: Sight Gauge and Filler Breather
are not stainless steel

*Sight Gauge and Filler Breather shipped loose
inside reservoir*

| Capacity Gallons | Vescor Part Number | Tank Dimensions (inches) | | | | | End Cover | Material Thickness | | Shipping Weight |
|------------------|--------------------|--------------------------|----------|---------|--------------------------|--------------------------|-----------|--------------------|-------|-----------------|
| | | A Length | B Height | C Width | Mounting Centers D1 ±1/8 | Mounting Centers D2 ±1/8 | | End | Top | |
| 10 | 23610 | 22" | 19" | 18" | 18 1/4" | 16 1/2" | 12" | 7 GA. | 7 GA. | 105# |
| 15 | 23615 | 26" | 19" | 18" | 22 1/4" | 16 1/2" | 12" | 7 GA. | 7 GA. | 105# |
| 20 | 23620 | 30" | 19" | 18" | 26 1/4" | 16 1/2" | 12" | 7 GA. | 7 GA. | 124# |
| 30 | 23630 | 36" | 19 3/8" | 24" | 32 1/4" | 22 1/2" | 12" | 7 GA. | 7 GA. | 178# |
| 40 | 23640 | 36" | 21" | 24" | 32 1/4" | 22 1/2" | 12" | 7 GA. | 7 GA. | 190# |
| 50 | 23650 | 36" | 23" | 24" | 32 1/4" | 22 1/2" | 16" | 7 GA. | 7 GA. | 200# |
| 60 | 23660 | 48" | 20 9/16" | 27" | 44 1/4" | 25 1/2" | 16" | 7 GA. | 1/4" | 266# |
| 80 | 23680 | 60" | 21 1/2" | 27" | 56 1/4" | 25 1/2" | 16" | 7 GA. | 3/8" | 398# |
| 100 | 236100 | 60" | 23 1/2" | 27" | 56 1/4" | 25 1/2" | 16" | 7 GA. | 3/8" | 418# |
| 120 | 236120 | 60" | 27" | 30" | 56 1/4" | 28 1/2" | 16" | 3/8" | 3/8" | 616# |
| 150 | 236150 | 60" | 31" | 30" | 56 1/4" | 28 1/2" | 16" | 3/8" | 3/8" | 681# |
| 200 | 236200 | 72" | 29 3/8" | 36" | 68 1/4" | 34 1/2" | 16" | 3/8" | 3/8" | 908# |
| 300 | 236300 | 72" | 38 1/2" | 36" | 68 1/4" | 34 1/2" | 16" | 3/8" | 3/8" | 999# |
| 400 | 236400 | 72" | 38 1/2" | 48" | 68 1/4" | 46 1/2" | 16" | 3/8" | 3/8" | 1460# |
| 500 | 236500 | 72" | 43" | 48" | 68 1/4" | 46 1/2" | 16" | 3/8" | 3/8" | 1618# |
| 600 | 236600 | 96" | 43" | 48" | 92 1/4" | 46 1/2" | 16" | 3/8" | 3/8" | 1685# |
| 700 | 236700 | 96" | 49" | 48" | 92 1/4" | 46 1/2" | 16" | 3/8" | 3/8" | 1843# |



JUMBO J.I.C. TYPE RESERVOIRS



Each Jumbo JIC Reservoir Includes:

1. (2) Oil Level and Temperature Gauges
2. (2) Risers with Filler Breathers
3. (4) Steel Endcovers with Gaskets
4. (2) Baffles with cutouts for circulation
5. (2) 2" NPT Drains
6. Exterior of reservoir prime painted
7. Interior of reservoir coated with rust preventive oil.

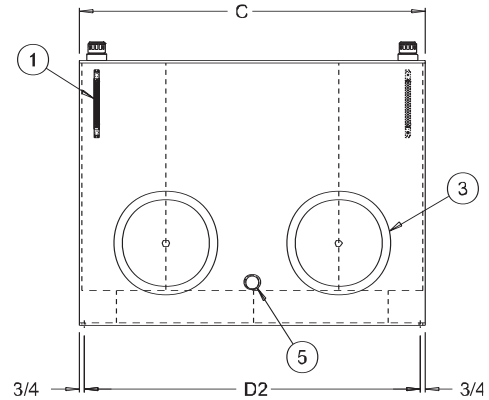
Sight Gauge

800 to 1000 gallon -10" Sight Gauge (FMALG10T)

Filler Breather

Bayonet Style - 40 micron (5201)

Sight Gauge and Filler Breather shipped loose inside reservoir



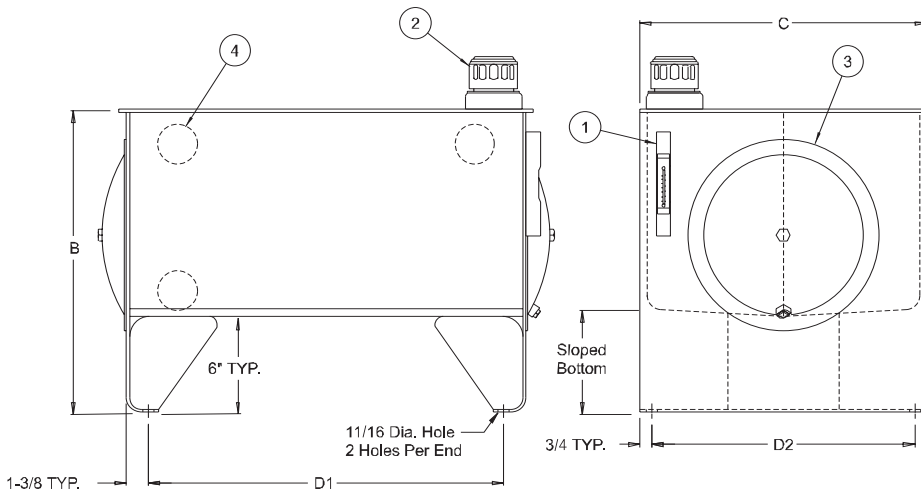
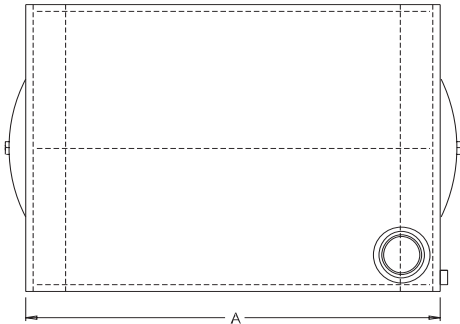
| Capacity Gallons | Vescor Part Number | Tank Dimensions (inches) | | | | | | | Material Thickness | | Shipping Weight (lbs.) |
|------------------|--------------------|--------------------------|----------|---------|------------------|----------|---------|-----------|--------------------|------|------------------------|
| | | A Length | B Height | C Width | Mounting Centers | | | End Cover | Top | Ends | |
| 800 | 100800 | 96" | 46" | 60" | D1A±1/8" | D1B±1/8" | D2±1/8" | 18" | 1/2" | 3/8" | 2696# |
| 900 | 100900 | 96" | 51" | 60" | 44 1/4" | 48" | 58 1/2" | 18" | 1/2" | 3/8" | 2860# |
| 1000 | 1001000 | 96" | 56" | 60" | 44 1/4" | 48" | 58 1/2" | 18" | 1/2" | 3/8" | 3025# |

Note: Jumbo JIC Reservoirs are standard non-stock reservoirs. Consult factory for lead times.



J.I.C. TYPE RESERVOIRS

Style B



Each Style B Reservoir Includes:

1. (1) Oil Level & Temp Gauge
2. (1) Riser with Filler Breather
3. (2) Steel Endcovers with Gaskets
 - * (1) Endcover includes 3/4" NPT Drain
4. Baffle with cutouts for circulation
5. Exterior of reservoir prime painted
6. Interior of reservoir coated with rust preventive oil

Sight Gauge

10 to 400 gallon - 5" sight gauge (ALG5T)

Filler Breather

Bayonet Style - 40 micron (5201)

Sight Gauge and Filler Breather shipped loose inside reservoir

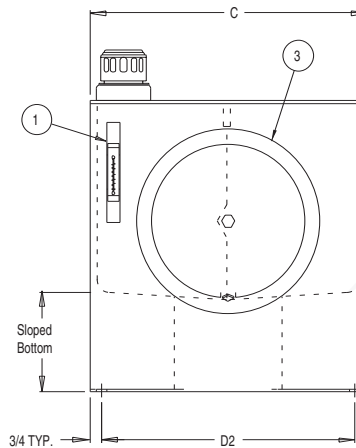
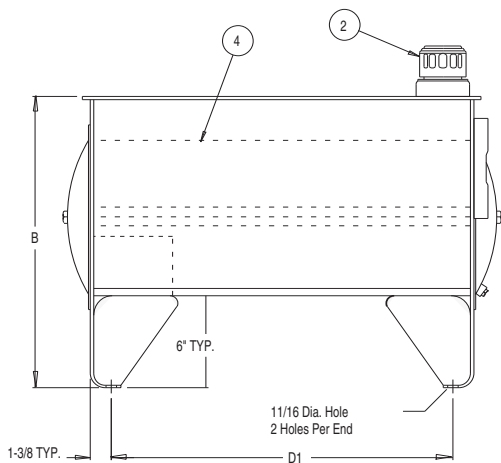
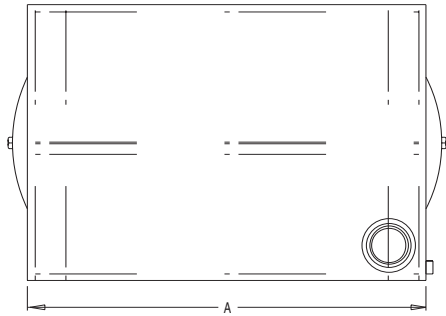
| Capacity Gallons | Vescor Part Number | Tank Dimensions (inches) | | | Mounting Centers | | End Cover | Material Thickness | | Shipping Weight |
|------------------|--------------------|--------------------------|----------|---------|------------------|----------|-----------|--------------------|-------|-----------------|
| | | A Length | B Height | C Width | D1 ±1/8" | D2 ±1/8" | | Ends | Top | |
| 10 | 37510 | 24" | 18" | 16" | 20 1/4" | 14 1/2" | 12" | 11 GA. | 7 GA. | 80# |
| 20 | 37520 | 32" | 18" | 21" | 28 1/4" | 19 1/2" | 12" | 11 GA. | 7 GA. | 94# |
| 60 | 37560 | 38" | 25" | 25" | 34 1/4" | 23 1/2" | 16" | 7 GA. | 1/4" | 242# |
| 80 | 37580 | 47" | 27" | 30" | 43 1/4" | 28 1/2" | 16" | 7 GA. | 1/4" | 365# |
| 100 | 375100 | 47" | 29" | 30" | 43 1/4" | 28 1/2" | 16" | 7 GA. | 1/4" | 375# |
| 120 | 375120 | 60" | 27" | 30" | 56 1/4" | 28 1/2" | 16" | 7 GA. | 3/8" | 512# |
| 150 | 375150 | 60" | 31" | 30" | 56 1/4" | 28 1/2" | 16" | 7 GA. | 3/8" | 523# |
| 200 | 375200 | 72" | 29" | 36" | 68 1/4" | 34 1/2" | 18" | 1/4" | 3/8" | 769# |
| *250 | 375250 | 72" | 35" | 36" | 68 1/4" | 34 1/2" | 18" | 1/4" | 3/8" | 900# |
| 300 | 375300 | 82" | 29" | 48" | 77" | 45" | 18" | 1/4" | 1/2" | 1306# |
| +400 | 375400 | 96" | 23 3/4" | 72" | 92 1/4" | 70 1/2" | 18" | 3/8" | 1/2" | 2066# |

* Non-stock special order item. +(2) baffles (4) endcovers (2) with 3/4" NPT drains provided



J.I.C. TYPE RESERVOIRS

Style RB Removable Baffle



Each Style RB Reservoir Includes:

1. (1) Oil Level & Temp. Gauge
2. (1) Riser with Filler Breather
3. (2) Steel Endcovers with Gaskets
*(1) endcover includes 3/4" NPT Drain
4. Removable Baffle
5. Exterior of reservoir prime painted
6. Interior of reservoir coated with rust preventive oil

Sight Gauge

10 to 300 gallon - 5" sight gauge (ALG5T)

Filler Breather

Bayonet Style - 40 micron (5201)

Sight Gauge and Filler Breather shipped loose inside reservoir

| Capacity Gallons | Vescor Part Number | Tank Dimensions (inches) | | | | | Material Thickness | | Shipping Weight | |
|------------------|--------------------|--------------------------|----------|---------|------------------|---------|--------------------|--------|-----------------|-------|
| | | A Length | B Height | C Width | Mounting Centers | | Ends | Top | | |
| | | | | | D1 ±1/8 | D2 ±1/8 | End Cover | | | |
| 10 | 19910 | 24" | 18" | 16" | 20 1/4" | 14 1/2" | 12" | 10 GA. | 7 GA. | 80# |
| 15 | 19915 | 26" | 19" | 18" | 22 1/4" | 16 1/2" | 12" | 7 GA. | 7 GA. | 105# |
| 20 | 19920 | 32" | 18" | 21" | 28 1/4" | 19 1/2" | 12" | 7 GA. | 7 GA. | 124# |
| 30 | 19930 | 36" | 19 3/8" | 24" | 32 1/4" | 22 1/2" | 12" | 7 GA. | 7 GA. | 178# |
| 40 | 19940 | 36" | 21" | 24" | 32 1/4" | 22 1/2" | 12" | 7 GA. | 7 GA. | 190# |
| 50 | 19950 | 36" | 23" | 24" | 32 1/4" | 22 1/2" | 12" | 7 GA. | 7 GA. | 200# |
| 60 | 19960 | 38" | 25" | 25" | 34 1/4" | 23 1/2" | 18" | 7 GA. | 1/4" | 242# |
| 80 | 19980 | 47" | 27" | 30" | 43 1/4" | 28 1/2" | 18" | 7 GA. | 1/4" | 365# |
| 100 | 199100 | 47" | 29" | 30" | 43 1/4" | 28 1/2" | 18" | 7 GA. | 1/4" | 375# |
| 120 | 199120 | 60" | 27" | 30" | 56 1/4" | 28 1/2" | 18" | 7 GA. | 3/8" | 512# |
| 150 | 199150 | 60" | 31" | 30" | 56 1/4" | 28 1/2" | 18" | 7 GA. | 3/8" | 523# |
| 200 | 199200 | 72" | 29" | 36" | 68 1/4" | 34 1/2" | 18" | 1/4" | 3/8" | 769# |
| 300 | 199300 | 82" | 29" | 48" | 77" | 45" | 18" | 1/4" | 1/2" | 1306# |



J.I.C. TYPE RESERVOIRS

Style RT

Each Style RT Reservoir Includes:

1. (1) Oil Level & Temp Gauge
2. Endcover(s) with Gasket(s)
3. Baffle with cutout for circulation
4. (1) 3/4" NPT Drain
5. (1) Return Connection
6. Channel Gasket for Removable Top (see note)
7. Exterior of reservoir prime painted
8. Interior of reservoir coated with rust preventive oil

NOTE: Removable Top Plates are ordered as separate items (see page 12)

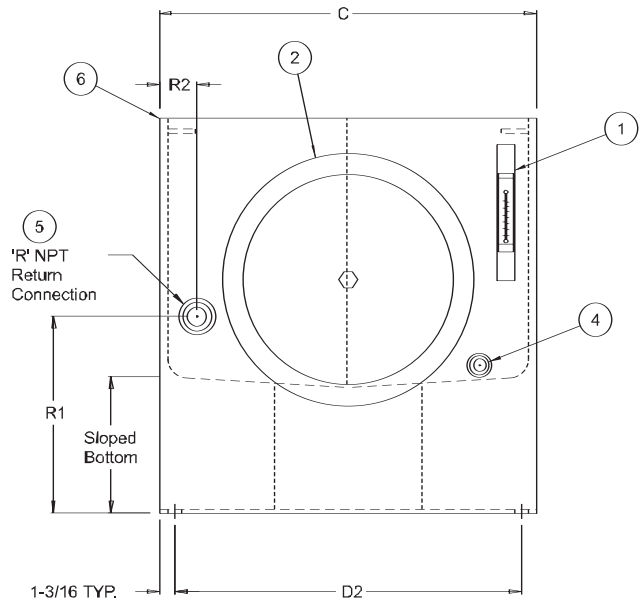
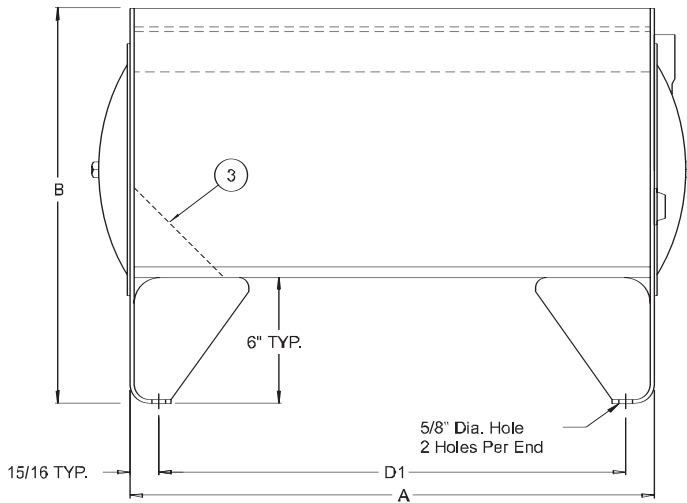
Cleanout Covers

| | | |
|---|------------------------------------|------------------------------------|
| <u>10 and 20 Gallon</u> | <u>35 Gallon</u> | <u>50 to 210 Gallon</u> |
| (1) 10" Dia. cleanout (sight gauge end only) | (1) 10" Dia. cleanout/both ends | (1) 14" Dia. cleanout/both ends |

Sight Gauge

10 to 210 gallon - 5" sight gauge (ALG5T)

Sight Gauge shipped loose inside reservoir, Filler Breather included with cover plate



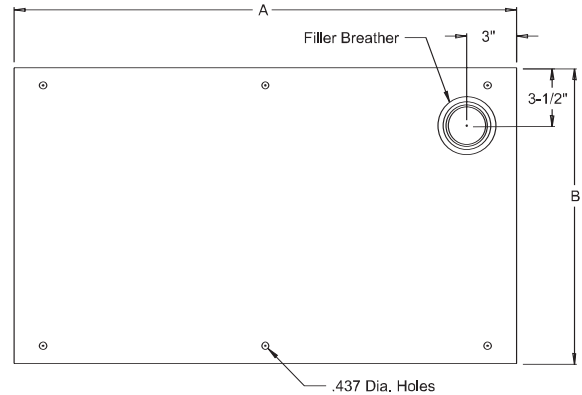
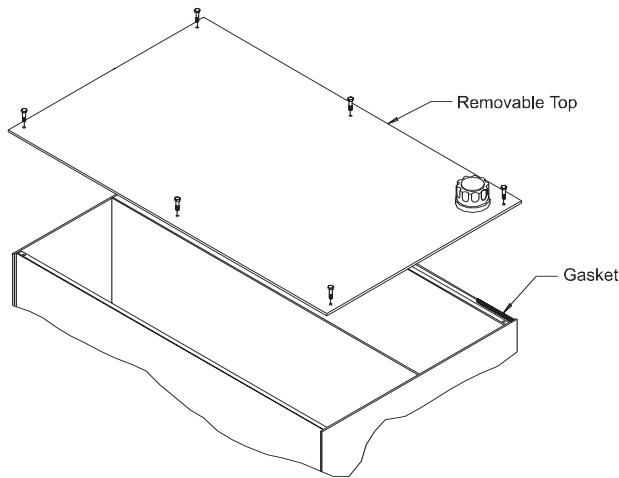
| Capacity Gallons | Vescor Part Number | Tank Dimensions (inches) | | | Mounting Centers | | Return Connections | | | Shipping Weight |
|------------------|--------------------|--------------------------|----------|---------|------------------|----------|--------------------|--------|------------|-----------------|
| | | A Length | B Height | C Width | D1 ±1/8" | D2 ±1/8" | R1 | R2 | R | |
| 10 | 12210 | 18 1/4" | 18" | 17 7/8" | 16 3/8" | 15 1/2" | 8 1/2" | 1 1/2" | 1/2" NPT | 90# |
| 20 | 12220 | 29 3/8" | 18" | 17 7/8" | 27 1/2" | 15 1/2" | 8 1/2" | 1 1/2" | 1" NPT | 120# |
| 35 | 12235 | 35 3/8" | 18 1/4" | 23 7/8" | 33 1/2" | 21 1/2" | 9 1/2" | 3" | 1 1/2" NPT | 160# |
| 50 | 12250 | 35 3/8" | 23" | 23 7/8" | 33 1/2" | 21 1/2" | 9 1/2" | 3" | 1 1/2" NPT | 197# |
| 70 | 12270 | 47 3/8" | 21" | 26 7/8" | 45 1/2" | 24 1/2" | 9 1/2" | 3" | 1 1/2" NPT | 235# |
| 90 | 12209 | 59 3/8" | 21 1/2" | 26 7/8" | 57 1/2" | 24 1/2" | 9 1/2" | 3" | 2" NPT | 281# |
| 130 | 122130 | 59 3/8" | 26" | 29 7/8" | 57 1/2" | 27 1/2" | 9 1/2" | 3" | 2" NPT | 345# |
| 160 | 122160 | 59 3/8" | 31" | 29 7/8" | 57 1/2" | 27 1/2" | 9 1/2" | 3" | 2" NPT | 398# |
| 210 | 122210 | 71 3/8" | 28 1/4" | 35 7/8" | 69" | 33 1/2" | 9 1/2" | 3" | 2" NPT | 484# |

NOTE: Removable Top Plates are ordered as separate items (see page 12). Weights do not include covers.



REMOVABLE TOPS

Style RT Removable Top



Each Style RT Removable Top Includes:

1. (1) Riser with Filler Breather
2. (1) Set of Mounting Hardware
3. Exterior surface of removable top prime painted

Filler Breather: Bayonet Style - 40 micron (5201)

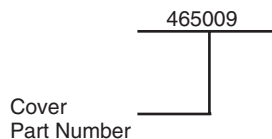
| Vescor Part Number | Description Gallons | Cover | Dimensions | | Shipping Weight |
|--------------------|---------------------|-------|------------|-----|-----------------|
| | | | A | B | |
| 465001 | 10 | 1/4" | 19" | 18" | 25# |
| 465002 | 10 | 3/8" | 19" | 18" | 37# |
| 465003 | 10 | 1/2" | 19" | 18" | 50# |
| 465004 | 20 | 1/4" | 30" | 18" | 39# |
| 465005 | 20 | 3/8" | 30" | 18" | 59# |
| 465006 | 20 | 1/2" | 30" | 18" | 78# |
| 465007 | 35/50 | 1/4" | 36" | 24" | 62# |
| 465008 | 35/50 | 3/8" | 36" | 24" | 94# |
| 465009 | 35/50 | 1/2" | 36" | 24" | 123# |
| *465010 | 35/50 | 3/4" | 36" | 24" | 184# |
| 465015 | 70 | 1/4" | 48" | 27" | 93# |
| 465016 | 70 | 3/8" | 48" | 27" | 140# |
| 465017 | 70 | 1/2" | 48" | 27" | 186# |
| *465018 | 70 | 3/4" | 48" | 27" | 279# |

| Vescor Part Number | Description Gallons | Cover | Dimensions | | Shipping Weight |
|--------------------|---------------------|-------|------------|-----|-----------------|
| | | | A | B | |
| 465019 | 90 | 1/4" | 60" | 27" | 116# |
| 465020 | 90 | 3/8" | 60" | 27" | 175# |
| 465021 | 90 | 1/2" | 60" | 27" | 232# |
| *465022 | 90 | 3/4" | 60" | 27" | 348# |
| 465023 | 130/160 | 1/4" | 60" | 30" | 129# |
| 465024 | 130/160 | 3/8" | 60" | 30" | 194# |
| 465026 | 130/160 | 1/2" | 60" | 30" | 258# |
| *465027 | 130/160 | 3/4" | 60" | 30" | 387# |
| *465028 | 130/160 | 1" | 60" | 30" | 516# |
| 465034 | 210 | 1/4" | 72" | 36" | 186# |
| 465035 | 210 | 3/8" | 72" | 36" | 278# |
| 465036 | 210 | 1/2" | 72" | 36" | 371# |
| *465037 | 210 | 3/4" | 72" | 36" | 566# |
| *465038 | 210 | 1" | 72" | 36" | 736# |

*Standard non stock top - consult factory for lead times

ORDERING INFORMATION:

Reservoirs do not include Removable Tops.
Removable Tops are ordered as separate items.
 Please use VESCOR part number when ordering.

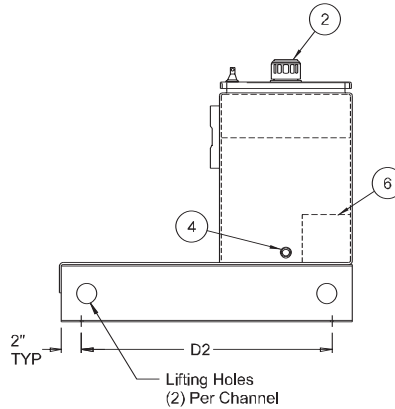
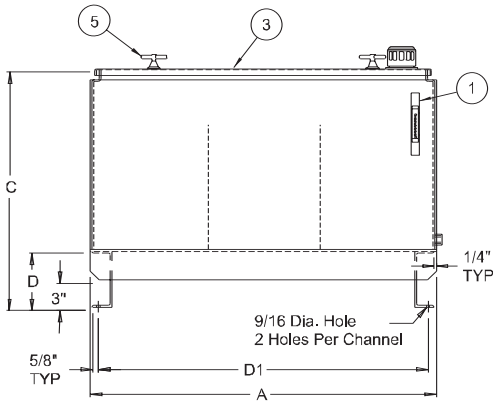
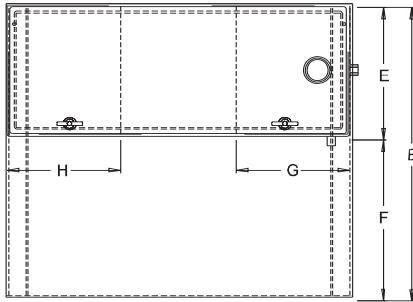
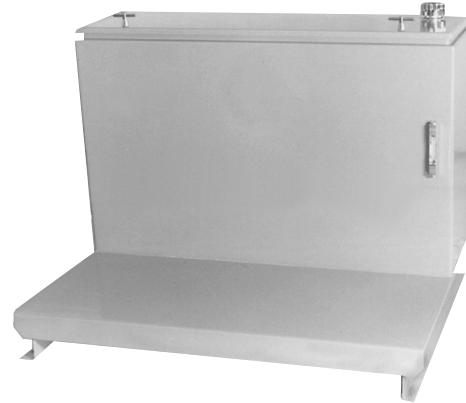


NOTE:
 Removable Top in example is a 1/2" thick top for a 35 gallon RT Reservoir.



"L" SHAPED RESERVOIRS

Style C



Each "L" Shaped Style C Reservoir Includes:

- (1) Oil Level & Temp. Gauge
- (1) Filler Breather
- (1) Hinged Cover with gasket
- (1) 3/4" NPT Drain
- (2) T-Handles (3) for 200 gallon and up
- Baffle(s) with cutout for circulation
- Exterior of reservoir prime painted
- Interior of reservoir coated with rust preventive oil.
- 100 gallon to 600 gallon include (1) door chain (not shown)

Sight Gauge

10 to 200 gallon - 5" sight gauge (ALG5T)
 300 gallon and up - 10" sight gauge (FMALG10T)

Filler Breather

Bayonet Style - 40 micron (5201)

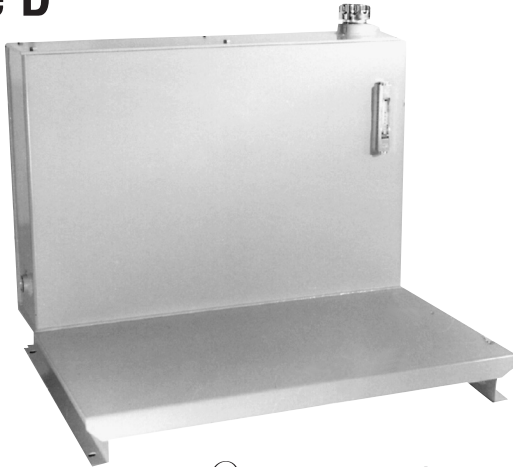
Sight Gauge and Filler Breather shipped loose inside reservoir

| Capacity Gallons | Vescor Part Number | Tank Dimensions (inches) | | | | | | | | Mounting Centers | | Shipping Weight |
|------------------|--------------------|--------------------------|-----------------------------------|-----------------------------------|----------------------------------|----------------------------------|-----------------------------------|-----|-----|----------------------------------|----------------------------------|-----------------|
| | | A | B | C | D | E | F | G | H | D1 ±1/8" | D2 ±1/8" | |
| 10 | VL-10 | 24" | 23 ³ / ₈ " | 23 ⁷ / ₈ " | 6 ³ / ₁₆ " | 11 ¹ / ₈ " | 12 ¹ / ₄ " | 11" | N/A | 22 ¹ / ₄ " | 19" | 135# |
| 20 | VL-20 | 30" | 27 ³ / ₈ " | 25 ⁷ / ₈ " | 6 ³ / ₁₆ " | 13 ¹ / ₂ " | 13 ⁷ / ₈ " | 12" | N/A | 28 ¹ / ₄ " | 23" | 183# |
| 30 | VL-30 | 36" | 30 ³ / ₈ " | 29 ⁷ / ₈ " | 6 ³ / ₁₆ " | 13 ³ / ₄ " | 16 ⁵ / ₈ " | 12" | N/A | 34 ¹ / ₄ " | 26" | 240# |
| 45 | VL-45 | 54" | 31 ³ / ₈ " | 29 ⁷ / ₈ " | 6 ³ / ₁₆ " | 13 ³ / ₄ " | 17 ⁵ / ₈ " | 12" | 12" | 52 ¹ / ₄ " | 27" | 335# |
| 60 | VL-60 | 48" | 37 ³ / ₈ " | 35 ⁷ / ₈ " | 6 ³ / ₁₆ " | 16 ³ / ₄ " | 20 ⁵ / ₈ " | 16" | N/A | 46 ¹ / ₄ " | 33" | 376# |
| 80 | VL-80 | 66" | 38 ⁹ / ₁₆ " | 36 ¹ / ₁₆ " | 6 ³ / ₈ " | 16 ³ / ₈ " | 22" | 16" | 16" | 64 ¹ / ₄ " | 34" | 670# |
| 100 | VL-100 | 60" | 42 ⁹ / ₁₆ " | 39 ¹ / ₁₆ " | 6 ³ / ₈ " | 19 ³ / ₈ " | 23" | 16" | N/A | 58 ¹ / ₄ " | 38" | 715# |
| 120 | VL-120 | 72" | 42 ⁹ / ₁₆ " | 39 ¹ / ₁₆ " | 6 ³ / ₈ " | 19 ³ / ₈ " | 23" | 16" | 16" | 70 ¹ / ₄ " | 38" | 836# |
| 150 | VL-150 | 72" | 50 ⁹ / ₁₆ " | 39 ¹ / ₁₆ " | 6 ³ / ₈ " | 25 ³ / ₈ " | 25" | 16" | N/A | 70 ¹ / ₄ " | 46" | 939# |
| 200 | VL-200 | 84" | 51 ⁹ / ₁₆ " | 42 ¹ / ₁₆ " | 6 ³ / ₈ " | 25 ³ / ₈ " | 26" | 16" | 16" | 82 ¹ / ₄ " | 47" | 1128# |
| 300 | VL-300 | 84" | 60" | 54 ³ / ₁₆ " | 6 ¹ / ₂ " | 25 ³ / ₈ " | 34 ⁷ / ₁₆ " | 16" | 16" | 82 ¹ / ₄ " | 55 ¹ / ₂ " | 1400# |
| 400 | VL-400 | 84" | 60" | 54 ³ / ₁₆ " | 6 ¹ / ₂ " | 28 ³ / ₈ " | 31 ⁷ / ₁₆ " | 16" | 16" | 82 ¹ / ₄ " | 55 ¹ / ₂ " | 1610# |
| 500 | VL-500 | 84" | 60" | 60 ³ / ₁₆ " | 6 ¹ / ₂ " | 32 ³ / ₈ " | 27 ⁷ / ₁₆ " | 18" | 18" | 82 ¹ / ₄ " | 55 ¹ / ₂ " | 1782# |
| 600 | VL-600 | 90" | 62" | 66 ³ / ₁₆ " | 6 ¹ / ₂ " | 30 ³ / ₈ " | 31 ⁷ / ₁₆ " | 22" | 22" | 88 ¹ / ₄ " | 57 ¹ / ₂ " | 1838# |



"L" SHAPED RESERVOIRS

Style D



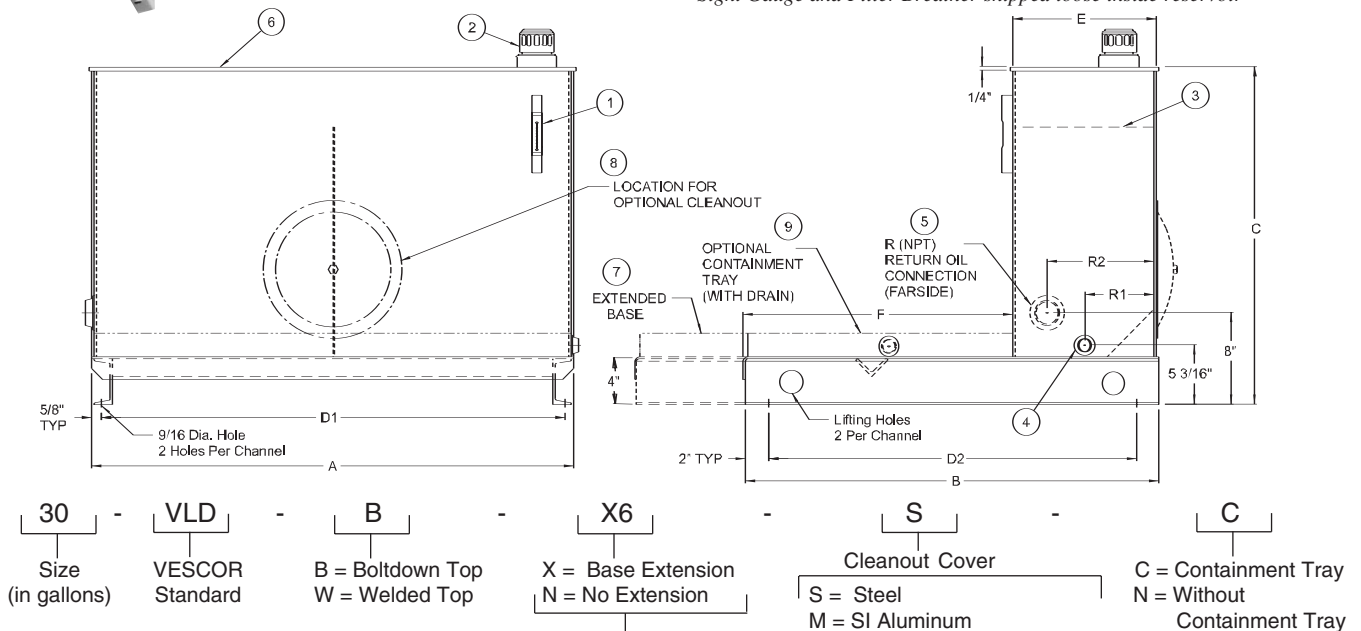
Each "L" Shaped Style D Reservoir Includes:

1. (1) Oil Level & Temp. Gauge
2. (1) Riser with Filler Breather
3. Baffle with cutout for circulation
4. (1) 3/4" NPT Drain
5. (1) Return connection
6. Customer Choice of Removable or Welded Top
7. Customer Choice of Extended Base
8. Optional Endcover (Steel, SI or DIN)
9. Optional Containment Tray with Drain
10. Exterior of reservoir prime painted
11. Interior of reservoir coated with rust preventive oil

Sight Gauge: 10 to 200 gallon - 5" sight gauge (ALG5T)

Filler Breather: Bayonet Style - 40 micron (5201)

Sight Gauge and Filler Breather shipped loose inside reservoir



How To Order:

VESCOR "L" Shaped Style "D" Reservoir allows you to design the required reservoir for your individual needs.

Please use Vescor Part Number when ordering.

Fill in all items LEAVE NO BLANKS

X6 = 6" Base Extension
 X12 = 12" Base Extension
 X18 = 18" Base Extension
 X24 = 24" Base Extension
 X*** = Customer Specified Extension

| RESERVOIR SIZE | STEEL | SI | DIN |
|----------------|-------|-----|-----|
| 10 to 60 | 12" | 275 | 324 |
| 80 to 200 | 16" | 400 | 449 |

| Capacity Gallons | Vescor Model Code | Tank Dimensions (inches) | | | | | Mounting Centers | | Return Connections | | | Shipping Weight |
|------------------|-------------------|--------------------------|-----|-----------------------------------|----------------------------------|-----------------------------------|----------------------------------|-----|----------------------------------|----------------------------------|---------------------------------|-----------------|
| | | A | B | C | E | F | D1 | D2 | R1 | R2 | R | |
| 10 | VLD | 24" | 22" | 26 ⁹ / ₁₆ " | 6 ¹ / ₂ " | 15 ⁷ / ₁₆ " | 22 ¹ / ₄ " | 18" | 3 ¹ / ₄ " | 4 ¹ / ₂ " | 1/2" | 151# |
| 20 | VLD | 36" | 27" | 26 ⁹ / ₁₆ " | 7 ¹ / ₂ " | 19 ⁷ / ₁₆ " | 34 ¹ / ₄ " | 23" | 3 ³ / ₄ " | 5 ¹ / ₂ " | 1" | 238# |
| 30 | VLD | 36" | 30" | 28 ⁹ / ₁₆ " | 10 ¹ / ₂ " | 19 ⁷ / ₁₆ " | 34 ¹ / ₄ " | 26" | 5 ¹ / ₄ " | 7 ¹ / ₂ " | 1 ¹ / ₂ " | 258# |
| 45 | VLD | 42" | 36" | 29 ⁹ / ₁₆ " | 12 ¹ / ₂ " | 23 ⁷ / ₁₆ " | 40 ¹ / ₄ " | 32" | 6 ¹ / ₄ " | 9 ¹ / ₂ " | 1 ¹ / ₂ " | 327# |
| 60 | VLD | 42" | 36" | 29 ⁹ / ₁₆ " | 16 ¹ / ₂ " | 19 ⁷ / ₁₆ " | 40 ¹ / ₄ " | 32" | 8 ¹ / ₄ " | 13 ¹ / ₂ " | 1 ¹ / ₂ " | 351# |
| 80 | VLD | 48" | 42" | 30 ⁹ / ₁₆ " | 18 ¹ / ₂ " | 23 ¹ / ₂ " | 46 ¹ / ₄ " | 38" | 9 ¹ / ₄ " | 15 ¹ / ₂ " | 1 ¹ / ₂ " | 432# |
| 100 | VLD | 50" | 47" | 31 ⁹ / ₁₆ " | 21 ¹ / ₂ " | 25 ¹ / ₂ " | 48 ¹ / ₄ " | 43" | 10 ³ / ₄ " | 18 ¹ / ₂ " | 2" | 493# |
| 120 | VLD | 52" | 50" | 32 ⁹ / ₁₆ " | 22 ¹ / ₂ " | 27 ¹ / ₂ " | 50 ¹ / ₄ " | 46" | 11 ¹ / ₄ " | 19 ¹ / ₂ " | 2" | 528# |
| 150 | VLD | 60" | 50" | 33 ⁹ / ₁₆ " | 22 ¹ / ₂ " | 27 ¹ / ₂ " | 58 ¹ / ₄ " | 46" | 11 ¹ / ₄ " | 19 ¹ / ₂ " | 2" | 605# |
| 200 | VLD | 60" | 57" | 40 ⁹ / ₁₆ " | 25 ¹ / ₂ " | 31 ¹ / ₂ " | 58 ¹ / ₄ " | 53" | 12 ³ / ₄ " | 22 ¹ / ₂ " | 2" | 771# |

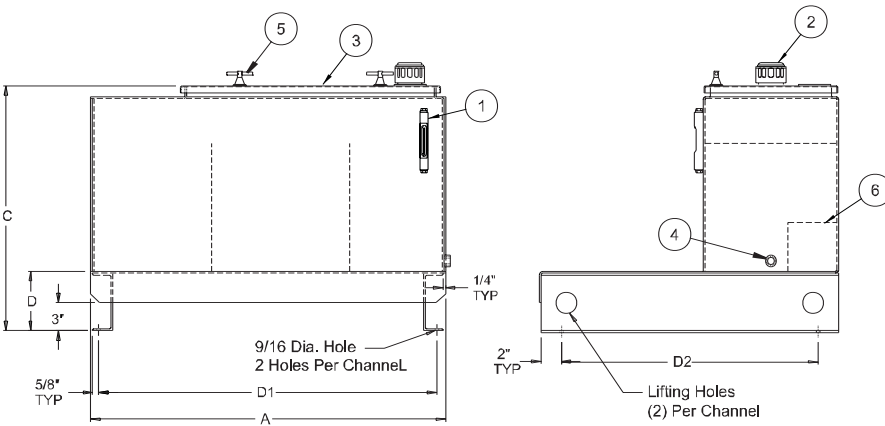
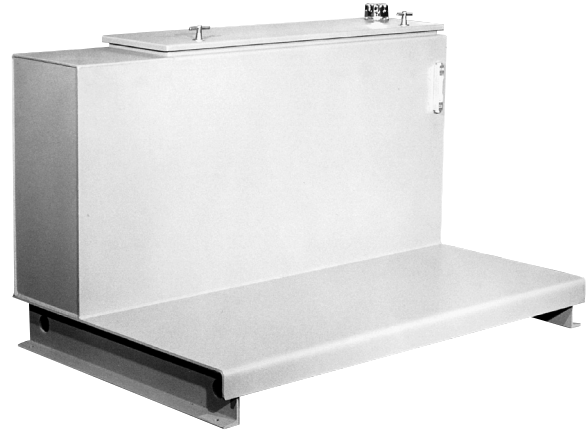
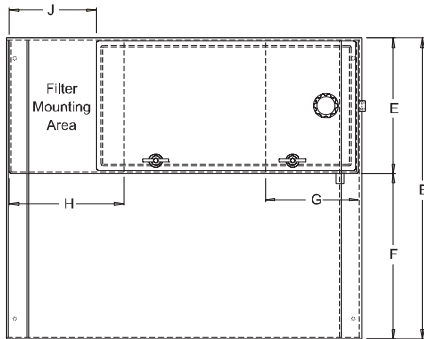
NOTE: WITH VESCORS' POLICY OF CONSTANTLY IMPROVING ITS PRODUCTS, SPECIFICATIONS ARE SUBJECT TO CHANGE WITHOUT NOTICE.



"L" SHAPED RESERVOIRS

Style F

Style "F" (Filter Mounting) Reservoirs are similar to the classic "L" Shaped Style "C" Reservoirs with the addition of a welded top section suitable for filter or accessory mounting. Remainder of top is hinged.



Each "L" Shaped Style F Reservoir Includes:

Welded top section for filter mounting

1. (1) Oil Level & Temp. Gauge
2. (1) Filler Breather
3. (1) Hinged cover with gasket
4. (1) 3/4" NPT Drain
5. (2) T-Handles (3) for 200 gallon and up
6. Baffle(s) with cutout for circulation
7. Exterior of reservoir prime painted
8. Interior of reservoir coated with rust preventive oil.
9. 100 gallon to 600 gallon include (1) door chain (not shown)

Sight Gauge

80 to 200 gallon - 5" sight gauge (ALG5T)
300 gallon and up - 10" sight gauge (ALG10T)

Filler Breather

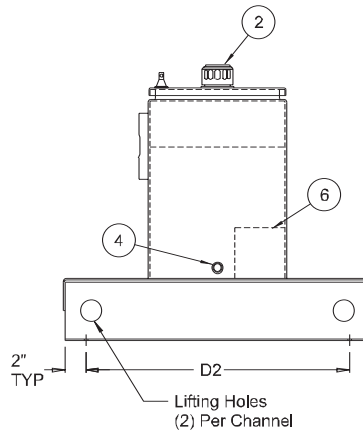
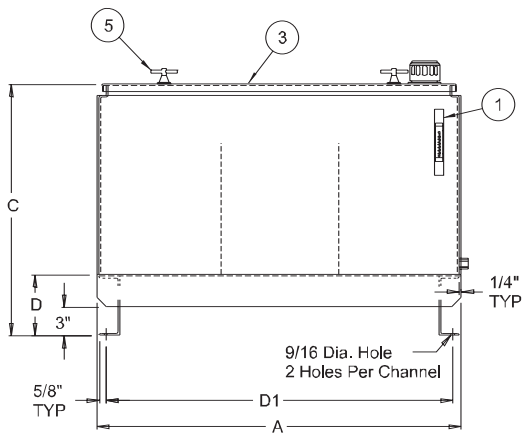
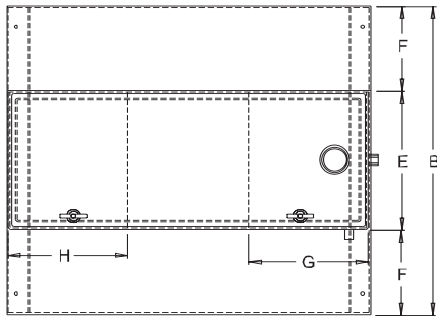
Bayonet Style - 40 micron (5201)

Sight Gauge and Filler Breather shipped loose inside reservoir

| Capacity Gallons | Vescor Part Number | Tank Dimensions (inches) | | | | | | | | Welded Top J | Mounting Centers | | Shipping Weight |
|------------------|--------------------|--------------------------|-----------------------------------|-----------------------------------|---------------------------------|----------------------------------|-----------------------------------|-----|-----|--------------|----------------------------------|----------------------------------|-----------------|
| | | A | B | C | D | E | F | G | H | | D1 ±1/8" | D2 ±1/8" | |
| 80 | 25880 | 60" | 38 ⁹ / ₁₆ " | 36 ¹ / ₁₆ " | 6 ³ / ₈ " | 13 ³ / ₈ " | 25" | 16" | 16" | 12" | 58 ¹ / ₄ " | 34" | 574# |
| 100 | 258100 | 60" | 42 ⁹ / ₁₆ " | 36 ¹ / ₁₆ " | 6 ³ / ₈ " | 16 ³ / ₈ " | 26" | 16" | 16" | 12" | 58 ¹ / ₄ " | 38" | 720# |
| 120 | 258120 | 72" | 42 ⁹ / ₁₆ " | 36 ¹ / ₁₆ " | 6 ³ / ₈ " | 16 ³ / ₈ " | 26" | 16" | 16" | 12" | 70 ¹ / ₄ " | 38" | 847# |
| 150 | 258150 | 72" | 50 ⁹ / ₁₆ " | 39 ¹ / ₁₆ " | 6 ³ / ₈ " | 18 ³ / ₈ " | 32" | 16" | 16" | 12" | 70 ¹ / ₄ " | 46" | 945# |
| 200 | 258200 | 84" | 51 ⁹ / ₁₆ " | 42 ¹ / ₁₆ " | 6 ³ / ₈ " | 18 ³ / ₈ " | 33" | 16" | 24" | 16" | 82 ¹ / ₄ " | 47" | 1136# |
| 300 | 258300 | 84" | 60" | 54 ³ / ₁₆ " | 6 ¹ / ₂ " | 25 ³ / ₈ " | 34 ⁷ / ₁₆ " | 16" | 24" | 16" | 82 ¹ / ₄ " | 55 ¹ / ₂ " | 1409# |
| 400 | 258400 | 84" | 60" | 54 ³ / ₁₆ " | 6 ¹ / ₂ " | 28 ³ / ₈ " | 31 ⁷ / ₁₆ " | 16" | 24" | 16" | 82 ¹ / ₄ " | 55 ¹ / ₂ " | 1618# |
| 500 | 258500 | 84" | 60" | 60 ³ / ₁₆ " | 6 ¹ / ₂ " | 32 ³ / ₈ " | 27 ⁷ / ₁₆ " | 18" | 24" | 18" | 82 ¹ / ₄ " | 55 ¹ / ₂ " | 1793# |
| 600 | 258600 | 90" | 62" | 65 ³ / ₁₆ " | 6 ¹ / ₂ " | 30 ³ / ₈ " | 31 ⁷ / ₁₆ " | 22" | 30" | 20" | 88 ¹ / ₄ " | 57 ¹ / ₂ " | 1849# |



“T” SHAPED RESERVOIRS



Each “T” Shaped Reservoir Includes:

1. (1) Oil Level & Temp. Gauge
2. (1) Filler Breather
3. (1) Hinged Cover with gasket
4. (1) 3/4” NPT Drain
5. (2) T-Handles (3) for 300 gallon and up
6. Baffle(s) with cutout for circulation
7. Exterior of reservoir prime painted
8. Interior of reservoir coated with rust preventive oil
9. 100 gallon to 400 gallon include (1) door chain (not shown)

Sight Gauge

10 to 200 gallon - 5” sight gauge (ALG5T)
 300 Gallon and up - 10” sight gauge (ALG10T)

Filler Breather

Bayonet Style - 40 micron (5201)

Sight Gauge and Filler Breather shipped loose inside reservoir

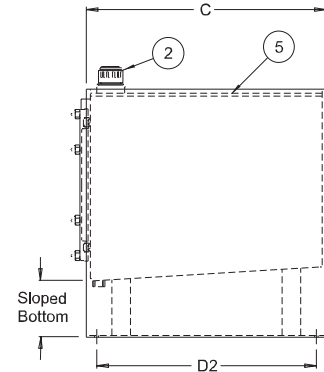
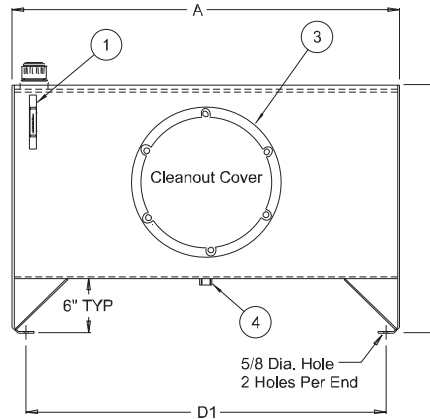
| Capacity Gallons | Vescor Part Number | Tank Dimensions (inches) | | | | | | | | Mounting Centers | | Shipping Weight |
|------------------|--------------------|--------------------------|---------|----------|---------|---------|----------|-----|-----|------------------|----------|-----------------|
| | | A | B | C | D | E | F | G | H | D1 ±1/8” | D2 ±1/8” | |
| 10 | VLT-10 | 24” | 35 1/4” | 23 7/8” | 6 3/16” | 11 1/8” | 12 1/16” | 11” | N/A | 22 1/4” | 30 7/8” | 178# |
| 20 | VLT-20 | 30” | 40 5/8” | 25 7/8” | 6 3/16” | 13 1/2” | 13 9/16” | 12” | N/A | 28 1/4” | 36 1/4” | 220# |
| 30 | VLT-30 | 36” | 46 5/8” | 29 7/8” | 6 3/16” | 13 3/4” | 16 7/16” | 12” | N/A | 34 1/4” | 42 1/4” | 291# |
| 45 | VLT-45 | 54” | 48 5/8” | 29 7/8” | 6 3/16” | 13 3/4” | 17 7/16” | 12” | 12” | 52 1/4” | 44 1/4” | 408# |
| 60 | VLT-60 | 48” | 58” | 35 7/8” | 6 3/16” | 16 3/4” | 20 5/8” | 16” | N/A | 46 1/4” | 53 5/8” | 455# |
| 80 | VLT-80 | 66” | 61 1/8” | 36 1/16” | 6 3/8” | 16 3/8” | 22 3/8” | 16” | 16” | 64 1/4” | 56 3/8” | 887# |
| 100 | VLT-100 | 60” | 66 1/8” | 39 1/16” | 6 3/8” | 19 3/8” | 23 3/8” | 16” | N/A | 58 1/4” | 61 3/8” | 944# |
| 120 | VLT-120 | 72” | 68 1/8” | 39 1/16” | 6 3/8” | 19 3/8” | 24 3/8” | 16” | 16” | 70 1/4” | 63 3/8” | 1130# |
| 150 | VLT-150 | 72” | 76 1/8” | 39 1/16” | 6 3/8” | 25 3/8” | 25 3/8” | 16” | N/A | 70 1/4” | 71 3/8” | 1228# |
| 200 | VLT-200 | 84” | 78 1/8” | 42 1/16” | 6 3/8” | 25 3/8” | 26 3/8” | 16” | 16” | 82 1/4” | 73 3/8” | 1470# |
| 300 | VLT-300 | 84” | 77 3/4” | 54 3/16” | 6 1/2” | 25 3/8” | 26 3/16” | 16” | 16” | 82 1/4” | 73 1/4” | 1839# |
| 400 | VLT-400 | 84” | 91” | 54 3/16” | 6 1/2” | 28 3/8” | 31 3/8” | 16” | 16” | 82 1/4” | 86 1/2” | 2056# |

NOTE: WITH VESCORS' POLICY OF CONSTANTLY IMPROVING ITS PRODUCTS, SPECIFICATIONS ARE SUBJECT TO CHANGE WITHOUT NOTICE.



D.I.N. TYPE RESERVOIRS

Style 1



Each D.I.N. Type Reservoir Style 1 includes:

1. (1) Oil Level & Temp. Gauge
2. (1) Riser with Filler Breather
3. (1) DIN Type Endcover, Gasket and Mounting Hardware
4. (1) SAE Drain with plug
5. Recessed Top (Drip Tray)
6. Exterior of reservoir prime painted
7. Interior of reservoir coated with rust preventive oil

Filler Breather: Bayonet Style - 40 micron (5201)

Sight Gauges: 5" (ALG5T), 10" (FMALG10T)

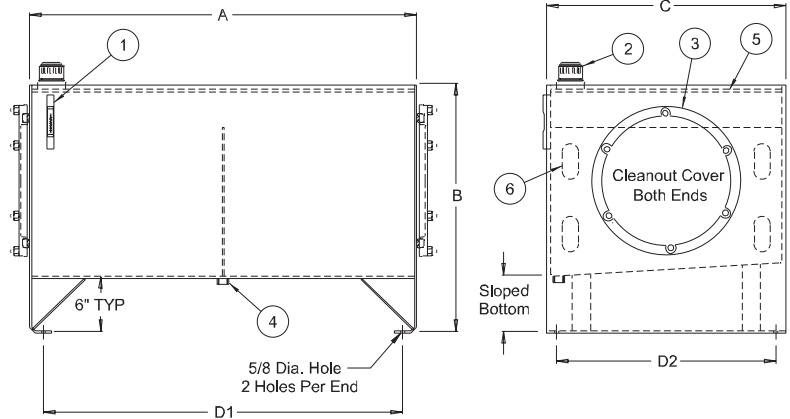
Sight Gauge and Filler Breather shipped loose inside reservoir

| Capacity | | Vescor Part Number | Sight Gauge (Mtg. Ctrs.) | Tank Dimensions (inches) | | | | | Cleanout Cover | Shipping Weight |
|--|--------|--------------------|--------------------------|----------------------------------|------------------------------------|----------------------------------|----------------------------------|----------------------------------|----------------|-----------------|
| Gallons | Liters | | | A Length | B Height | C Width | D1 Mtg. Ctrs. | D2 Mtg. Ctrs. | | |
| 499XXX SERIES ARE HEAVY DUTY RESERVOIRS | | | | | | | | | | |
| 20 | 76 | 49920 | 5" | 24 ³ / ₈ " | 21" | 18" | 21 ³ / ₄ " | 15 ¹ / ₂ " | 324 | 128# |
| 30 | 114 | 49930 | 5" | 30 ³ / ₈ " | 21 ⁷ / ₁₆ " | 20 ³ / ₄ " | 27" | 18 ¹ / ₄ " | 324 | 170# |
| 40 | 151 | 49940 | 5" | 36 ³ / ₈ " | 22 ³ / ₄ " | 20 ³ / ₄ " | 33" | 18 ¹ / ₄ " | 324 | 231# |
| 60 | 227 | 49960 | 5" | 42 ³ / ₈ " | 24 ¹ / ₄ " | 24" | 39" | 21 ¹ / ₂ " | 324 | 301# |
| 80 | 303 | 49980 | 5" | 42 ³ / ₈ " | 25 ³ / ₈ " | 30" | 39" | 27 ¹ / ₂ " | 324 | 371# |
| 100 | 379 | 499100 | 10" | 42 ³ / ₈ " | 29 ¹ / ₄ " | 30" | 39" | 27 ¹ / ₂ " | 449 | 400# |
| 120 | 454 | 499120 | 10" | 48 ¹ / ₂ " | 30 ¹ / ₄ " | 30" | 45" | 27 ¹ / ₂ " | 449 | 554# |
| 150 | 568 | 499150 | 10" | 60 ¹ / ₂ " | 30 ¹ / ₄ " | 30" | 57" | 27 ¹ / ₂ " | 449 | 665# |
| 200 | 757 | 499200 | 10" | 72 ³ / ₄ " | 29 ¹³ / ₁₆ " | 36" | 69" | 33 ¹ / ₂ " | 449 | 973# |
| 300 | 1136 | 499300 | 10" | 72 ³ / ₄ " | 38 ¹¹ / ₁₆ " | 36" | 69" | 33 ¹ / ₂ " | 449 | 1142# |
| 400 | 1514 | 499400 | 10" | 84 ³ / ₄ " | 43 ³ / ₁₆ " | 36" | 80 ³ / ₄ " | 33 ¹ / ₂ " | 449 | 1495# |
| 500 | 1892 | 499500 | 10" | 84 ³ / ₄ " | 44 ³ / ₄ " | 42" | 80 ³ / ₄ " | 39 ¹ / ₂ " | 449 | 1701# |
| 422XXX SERIES ARE LIGHT DUTY RESERVOIRS | | | | | | | | | | |
| 20 | 76 | 42220 | 5" | 30" | 20 ¹ / ₂ " | 18" | 27" | 15 ¹ / ₂ " | 324 | 120# |
| 35 | 132 | 42235 | 5" | 35" | 21 ¹ / ₄ " | 24" | 32" | 21 ¹ / ₂ " | 324 | 168# |
| 60 | 227 | 42260 | 5" | 42" | 22 ³ / ₄ " | 26" | 39" | 23 ¹ / ₂ " | 324 | 212# |
| 80 | 303 | 42280 | 5" | 48" | 24 ³ / ₄ " | 27" | 45" | 24 ¹ / ₂ " | 324 | 252# |
| 100 | 379 | 422100 | 10" | 57" | 24 ³ / ₄ " | 30" | 54" | 27 ¹ / ₂ " | 449 | 314# |
| 120 | 454 | 422120 | 10" | 60" | 25 ³ / ₄ " | 30" | 57" | 27 ¹ / ₂ " | 449 | 450# |
| 150 | 568 | 422150 | 10" | 60" | 29 ³ / ₄ " | 30" | 57" | 27 ¹ / ₂ " | 449 | 481# |
| 200 | 757 | 422200 | 10" | 72" | 28 ¹ / ₂ " | 36" | 69" | 33 ¹ / ₂ " | 449 | 696# |
| 300 | 1136 | 422300 | 10" | 72" | 38 ¹ / ₂ " | 36" | 69" | 33 ¹ / ₂ " | 449 | 903# |
| 400 | 1514 | 422400 | 10" | 84 ³ / ₄ " | 43 ³ / ₁₆ " | 36" | 81 ³ / ₄ " | 33 ¹ / ₂ " | 449 | 1248# |
| 500 | 1892 | 422500 | 10" | 84 ³ / ₄ " | 44 ³ / ₄ " | 42" | 81 ³ / ₄ " | 39 ¹ / ₂ " | 449 | 1440# |



D.I.N. TYPE RESERVOIRS

Style 2



Each D.I.N. Type Reservoir Style 2 includes:

1. (1) Oil Level & Temp. Gauge
2. (1) Riser with Filler Breather
3. (2) DIN Type Endcovers, Gaskets and Mounting Hardware
4. (1) SAE Drain with plug
5. Recessed Top (Drip Tray)
6. (1) Baffle with cutouts for circulation
7. Exterior of reservoir prime painted
8. Interior of reservoir coated with rust preventive oil

Filler Breather: Bayonet Style - 40 micron (5201)

Sight Gauges: 5" (ALG5T), 10" (FMALG10T)

Sight Gauge and Filler Breather shipped loose inside reservoir

| Capacity | | Vescor Part Number | Sight Gauge (Mtg. Ctrs.) | Tank Dimensions (inches) | | | | | Cleanout Cover | Shipping Weight |
|--|--------|--------------------|--------------------------|----------------------------------|------------------------------------|----------------------------------|----------------------------------|----------------------------------|----------------|-----------------|
| Gallons | Liters | | | A Length | B Height | C Width | D1 Mtg. Ctrs. | D2 Mtg. Ctrs. | | |
| 599XXX SERIES ARE HEAVY DUTY RESERVOIRS | | | | | | | | | | |
| 20 | 76 | 59920 | 5" | 24 ³ / ₈ " | 21" | 18" | 21 ³ / ₄ " | 15 ¹ / ₂ " | 324 | 141# |
| 30 | 114 | 59930 | 5" | 30 ³ / ₈ " | 21 ⁷ / ₁₆ " | 20 ³ / ₄ " | 27" | 18 ¹ / ₄ " | 324 | 185# |
| 40 | 151 | 59940 | 5" | 36 ³ / ₈ " | 22 ³ / ₄ " | 20 ³ / ₄ " | 33" | 18 ¹ / ₄ " | 324 | 248# |
| 60 | 227 | 59960 | 5" | 42 ³ / ₈ " | 24 ¹ / ₄ " | 24" | 39" | 21 ¹ / ₂ " | 324 | 321# |
| 80 | 303 | 59980 | 5" | 42 ³ / ₈ " | 25 ³ / ₈ " | 30" | 39" | 27 ¹ / ₂ " | 324 | 398# |
| 100 | 379 | 599100 | 10" | 42 ³ / ₈ " | 29 ¹ / ₄ " | 30" | 39" | 27 ¹ / ₂ " | 449 | 430# |
| 120 | 454 | 599120 | 10" | 48 ¹ / ₂ " | 30 ¹ / ₄ " | 30" | 45" | 27 ¹ / ₂ " | 449 | 584# |
| 150 | 568 | 599150 | 10" | 60 ¹ / ₂ " | 30 ¹ / ₄ " | 30" | 57" | 27 ¹ / ₂ " | 449 | 695# |
| 200 | 757 | 599200 | 10" | 72 ³ / ₄ " | 29 ¹³ / ₁₆ " | 36" | 69" | 33 ¹ / ₂ " | 449 | 1029# |
| 300 | 1136 | 599300 | 10" | 72 ³ / ₄ " | 38 ¹¹ / ₁₆ " | 36" | 69" | 33 ¹ / ₂ " | 449 | 1213# |
| 400 | 1514 | 599400 | 10" | 84 ³ / ₄ " | 43 ³ / ₁₆ " | 36" | 80 ³ / ₄ " | 33 ¹ / ₂ " | 449 | 1575# |
| 500 | 1892 | 599500 | 10" | 84 ³ / ₄ " | 44 ³ / ₄ " | 42" | 80 ³ / ₄ " | 39 ¹ / ₂ " | 449 | 1798# |
| 522XXX SERIES ARE LIGHT DUTY RESERVOIRS | | | | | | | | | | |
| 20 | 76 | 52220 | 5" | 30" | 20 ¹ / ₂ " | 18" | 27" | 15 ¹ / ₂ " | 324 | 136# |
| 35 | 132 | 52235 | 5" | 35" | 21 ¹ / ₄ " | 24" | 32" | 21 ¹ / ₂ " | 324 | 187# |
| 60 | 227 | 52260 | 5" | 42" | 22 ³ / ₄ " | 26" | 39" | 23 ¹ / ₂ " | 324 | 235# |
| 80 | 303 | 52280 | 5" | 48" | 24 ³ / ₄ " | 27" | 45" | 24 ¹ / ₂ " | 324 | 277# |
| 100 | 379 | 522100 | 10" | 57" | 24 ³ / ₄ " | 30" | 54" | 27 ¹ / ₂ " | 449 | 340# |
| 120 | 454 | 522120 | 10" | 60" | 25 ³ / ₄ " | 30" | 57" | 27 ¹ / ₂ " | 449 | 480# |
| 150 | 568 | 522150 | 10" | 60" | 29 ³ / ₄ " | 30" | 57" | 27 ¹ / ₂ " | 449 | 526# |
| 200 | 757 | 522200 | 10" | 72" | 28 ¹ / ₂ " | 36" | 69" | 33 ¹ / ₂ " | 449 | 748# |
| 300 | 1136 | 522300 | 10" | 72" | 38 ¹ / ₂ " | 36" | 69" | 33 ¹ / ₂ " | 449 | 974# |
| 400 | 1514 | 522400 | 10" | 84 ³ / ₄ " | 43 ³ / ₁₆ " | 36" | 81 ³ / ₄ " | 33 ¹ / ₂ " | 449 | 1338# |
| 500 | 1892 | 522500 | 10" | 84 ³ / ₄ " | 44 ³ / ₄ " | 42" | 81 ³ / ₄ " | 39 ¹ / ₂ " | 449 | 1536# |

NOTE: WITH VESCORS' POLICY OF CONSTANTLY IMPROVING ITS PRODUCTS, SPECIFICATIONS ARE SUBJECT TO CHANGE WITHOUT NOTICE.



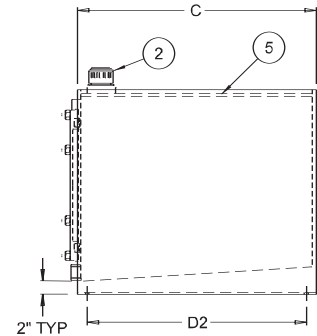
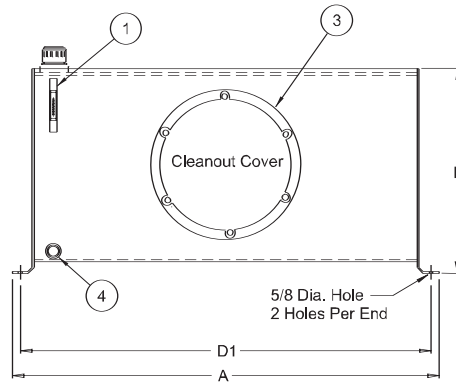
D.I.N. TYPE RESERVOIRS

Style 3



Each D.I.N. Type Reservoir Style 3 Includes:

1. (1) Oil Level & Temp. Gauge
2. (1) Riser with Filler Breather
3. (1) DIN Type Endcover, Gasket and Mounting Hardware
4. (1) SAE Drain with plug
5. Recessed Top (Drip Tray)
6. Exterior of reservoir prime painted
7. Interior of reservoir coated with rust preventive oil



Filler Breather: Bayonet Style - 40 micron (5201)

Sight Gauges: 5" (ALG5T), 10" (FMALG10T)

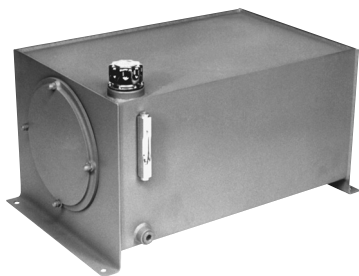
Sight Gauge and Filler Breather shipped loose inside reservoir

| Capacity Gallons | Liters | Vescor Part Number | Sight Gauge (Mtg. Ctrs.) | Tank Dimensions (inches) | | | | D2 Mtg. Ctrs. | Cleanout Cover | Ship Weight |
|--|--------|--------------------------|--------------------------------|----------------------------------|------------------------------------|----------------------------------|----------------------------------|----------------------------------|-------------------|----------------|
| | | | | A Length | B Height | C Width | D1 Mtg. Ctrs. | | | |
| 699XXX SERIES ARE HEAVY DUTY RESERVOIRS | | | | | | | | | | |
| 20 | 76 | 69920 | 5" | 28" | 17" | 18" | 26 ¹ / ₂ " | 15 ¹ / ₂ " | 324 | 118# |
| 30 | 114 | 69930 | 5" | 34" | 17 ⁷ / ₁₆ " | 20 ³ / ₄ " | 32 ¹ / ₂ " | 18 ¹ / ₄ " | 324 | 158# |
| 40 | 151 | 69940 | 5" | 40" | 18 ³ / ₄ " | 20 ³ / ₄ " | 38 ¹ / ₂ " | 18 ¹ / ₄ " | 324 | 190# |
| 60 | 227 | 69960 | 5" | 46" | 20 ¹ / ₄ " | 24" | 44 ¹ / ₂ " | 21 ¹ / ₂ " | 324 | 219# |
| 80 | 303 | 69980 | 5" | 46" | 21 ³ / ₈ " | 30" | 44 ¹ / ₂ " | 27 ¹ / ₂ " | 324 | 287# |
| 100 | 379 | 699100 | 10" | 46" | 25 ¹ / ₄ " | 30" | 44 ¹ / ₂ " | 27 ¹ / ₂ " | 449 | 348# |
| 120 | 454 | 699120 | 10" | 52" | 26 ¹ / ₄ " | 30" | 50 ¹ / ₂ " | 27 ¹ / ₂ " | 449 | 530# |
| 150 | 568 | 699150 | 10" | 64" | 26 ¹ / ₄ " | 30" | 62 ¹ / ₂ " | 27 ¹ / ₂ " | 449 | 633# |
| 200 | 757 | 699200 | 10" | 77" | 25 ¹³ / ₁₆ " | 36" | 75 ¹ / ₂ " | 33 ¹ / ₂ " | 449 | 930# |
| 622XXX SERIES ARE LIGHT DUTY RESERVOIRS | | | | | | | | | | |
| 20 | 76 | 62220 | 5" | 33 ⁵ / ₈ " | 16" | 18" | 32 ¹ / ₈ " | 15 ¹ / ₂ " | 324 | 91# |
| 35 | 132 | 62235 | 5" | 38 ⁵ / ₈ " | 16 ³ / ₄ " | 24" | 37 ¹ / ₈ " | 21 ¹ / ₂ " | 324 | 160# |
| 60 | 227 | 62260 | 5" | 45 ³ / ₄ " | 18 ¹ / ₄ " | 26" | 44 ¹ / ₄ " | 23 ¹ / ₂ " | 324 | 208# |
| 80 | 303 | 62280 | 5" | 51 ⁵ / ₈ " | 20 ¹ / ₄ " | 27" | 50 ¹ / ₈ " | 24 ¹ / ₂ " | 324 | 254# |
| 100 | 379 | 622100 | 10" | 60 ⁵ / ₈ " | 20 ¹ / ₄ " | 30" | 59 ¹ / ₄ " | 27 ¹ / ₂ " | 324 | 261# |
| 120 | 454 | 622120 | 10" | 63 ¹ / ₂ " | 21 ¹ / ₄ " | 30" | 62 ¹ / ₈ " | 27 ¹ / ₂ " | 324 | 416# |
| 150 | 568 | 622150 | 10" | 63 ¹ / ₂ " | 25 ¹ / ₄ " | 30" | 62 ¹ / ₈ " | 27 ¹ / ₂ " | 449 | 554# |
| 200 | 757 | 622200 | 10" | 75 ¹ / ₂ " | 24" | 36" | 74" | 33 ¹ / ₂ " | 449 | 850# |



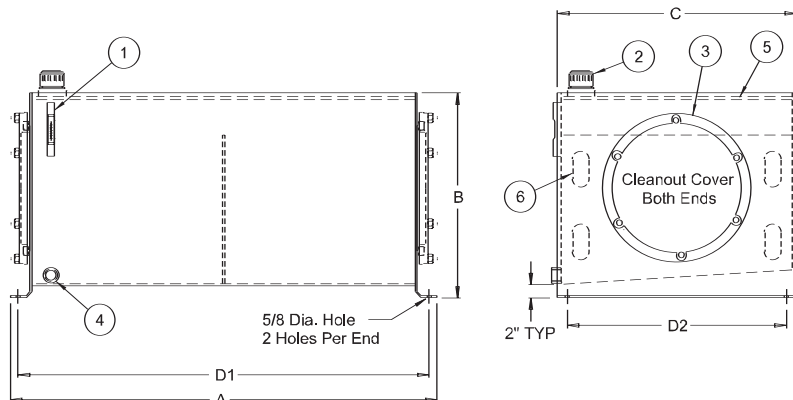
D.I.N. TYPE RESERVOIRS

Style 4



Each D.I.N. Type Reservoir Style 4 includes:

1. (1) Oil Level and Temp. Gauge
2. (1) Riser with Filler Breather
3. (2) DIN Type Endcovers, Gaskets and Mounting Hardware
4. (1) SAE Drain with plug
5. Recessed Top (Drip Tray)
6. (1) Baffle with cutouts for circulation
7. Exterior of reservoir prime painted
8. Interior of reservoir coated with rust preventive oil



Filler Breather: Bayonet Style - 40 micron (5201)

Sight Gauges: 5" (ALG5T), 10" (FMALG10T)

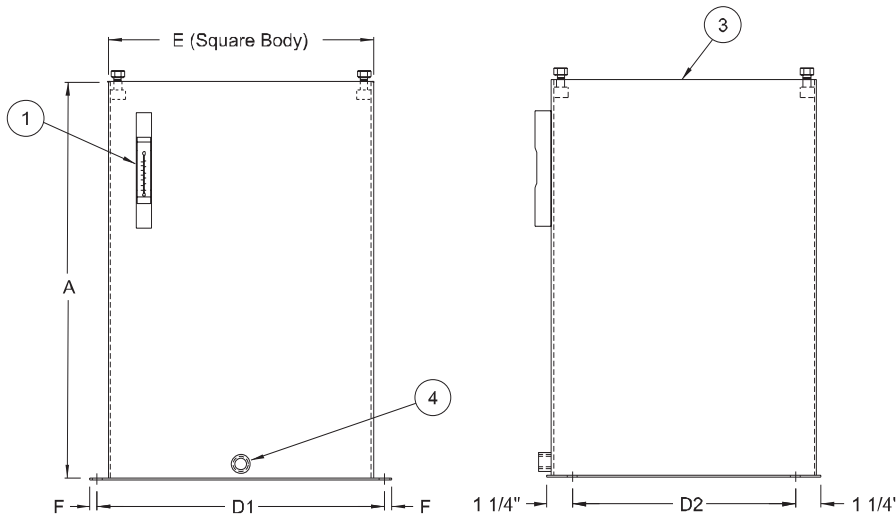
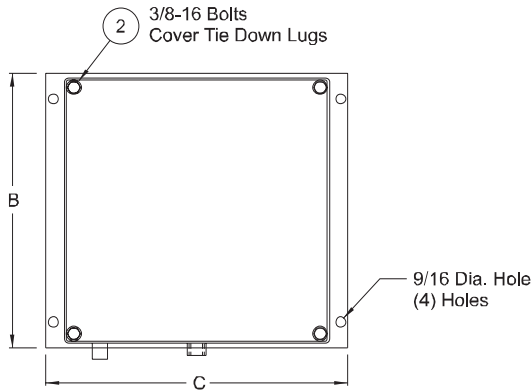
Sight Gauge and Filler Breather shipped loose inside reservoir

| Capacity | | Vescor Part Number | Sight Gauge (Mtg. Ctrs.) | Tank Dimensions (inches) | | | | | Cleanout Cover | Shipping Weight |
|--|--------|--------------------|--------------------------|--------------------------|-----------|---------|---------------|---------------|----------------|-----------------|
| Gallons | Liters | | | A Length | B Height | C Width | D1 Mtg. Ctrs. | D2 Mtg. Ctrs. | | |
| 799XXX SERIES ARE HEAVY DUTY RESERVOIRS | | | | | | | | | | |
| 20 | 76 | 79920 | 5" | 28" | 17" | 18" | 26 1/2" | 15 1/2" | 324 | 125# |
| 30 | 114 | 79930 | 5" | 34" | 17 7/16" | 20 3/4" | 32 1/2" | 18 1/4" | 324 | 166# |
| 40 | 151 | 79940 | 5" | 40" | 18 3/4" | 20 3/4" | 38 1/2" | 18 1/4" | 324 | 207# |
| 60 | 227 | 79960 | 5" | 46" | 20 1/4" | 24" | 44 1/2" | 21 1/2" | 324 | 240# |
| 80 | 303 | 79980 | 5" | 46" | 21 3/8" | 30" | 44 1/2" | 27 1/2" | 324 | 314# |
| 100 | 379 | 799100 | 10" | 46" | 25 1/4" | 30" | 44 1/2" | 27 1/2" | 449 | 376# |
| 120 | 454 | 799120 | 10" | 52" | 26 1/4" | 30" | 50 1/2" | 27 1/2" | 449 | 570# |
| 150 | 568 | 799150 | 10" | 64" | 26 1/4" | 30" | 62 1/2" | 27 1/2" | 449 | 673# |
| 200 | 757 | 799200 | 10" | 77" | 25 13/16" | 36" | 75 1/2" | 33 1/2" | 449 | 987# |
| 722XXX SERIES ARE LIGHT DUTY RESERVOIRS | | | | | | | | | | |
| 20 | 76 | 72220 | 5" | 33 5/8" | 16" | 18" | 32 1/8" | 15 1/2" | 324 | 97# |
| 35 | 132 | 72235 | 5" | 38 5/8" | 16 3/4" | 24" | 37 1/8" | 21 1/2" | 324 | 169# |
| 60 | 227 | 72260 | 5" | 45 3/4" | 18 1/4" | 26" | 44 1/4" | 23 1/2" | 324 | 219# |
| 80 | 303 | 72280 | 5" | 51 5/8" | 20 1/4" | 27" | 50 1/8" | 24 1/2" | 324 | 269# |
| 100 | 379 | 722100 | 10" | 60 5/8" | 20 1/4" | 30" | 59 1/4" | 27 1/2" | 324 | 280# |
| 120 | 454 | 722120 | 10" | 63 1/2" | 21 1/4" | 30" | 62 1/8" | 27 1/2" | 324 | 437# |
| 150 | 568 | 722150 | 10" | 63 1/2" | 25 1/4" | 30" | 62 1/8" | 27 1/2" | 449 | 583# |
| 200 | 757 | 722200 | 10" | 75 1/2" | 24" | 36" | 74" | 33 1/2" | 449 | 907# |



NON-J.I.C. RESERVOIRS

Vertical Style



Each Vertical Non-J.I.C.

Reservoir includes:

1. (1) Oil Level & Temp. Gauge
2. (4) Cover Mounting Bolts
3. Channel gasket for cover plate seal
4. (1) 1/2" NPT Drain
5. Steel construction with customer choice of top
6. Exterior of reservoir prime painted
7. Interior of reservoir coated with rust preventive oil

Sight Gauge

5 to 30 gallon - 5" sight gauge (ALG5T)

NOTE: Cover Plate ordered as separate item (see page 20)

*Sight Gauge shipped loose inside reservoir,
Filler Breather included with cover plate*

| Capacity Gallons | Vescor Part Number | Tank Dimensions (inches) | | | | | E | F | Shipping Weight |
|------------------|--------------------|--------------------------|---------|---------|---------------------------------------|-----|-----|------|-----------------|
| | | A | B | C | Mounting Centers D1 ±1/8" D2 ±1/8" | | | | |
| 5 | 215145 | 10" | 12 1/2" | 14 1/2" | 13 1/2" | 10" | 12" | 1/2" | 30# |
| 10 | 215146 | 19 11/16" | 12 1/2" | 14 1/2" | 13 1/2" | 10" | 12" | 1/2" | 45# |
| 10 | 215147 | 11 3/4" | 16 1/2" | 19" | 17 1/2" | 14" | 16" | 3/4" | 50# |
| 20 | 215148 | 23 11/16" | 16 1/2" | 19" | 17 1/2" | 14" | 16" | 3/4" | 66# |
| 30 | 215149 | 35 11/16" | 16 1/2" | 19" | 17 1/2" | 14" | 16" | 3/4" | 86# |

*Weights do not include covers



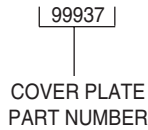
COVER PLATES

ORDERING INFORMATION

VESCOR Vertical Non-JIC Reservoirs allow you to choose the style cover plate for your individual needs.

Reservoir and Cover Plate must be ordered as separate items. Please use Part Number when ordering.

NOTE: Filler Breathers are included with cover plates only

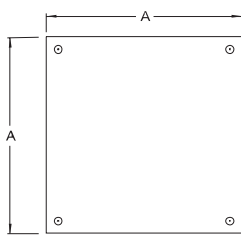


Example:
Cover Plate for 10 Gallon Non-JIC Reservoir
(215147) with 56C/145TC Adapter Cutout (Style 1)

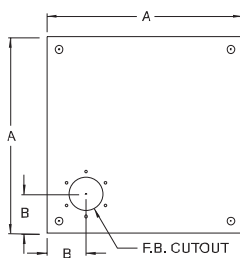
| Reservoir Part Number | Standard Dimensions for Vertical Tops | | | | |
|-----------------------|---------------------------------------|---------------------------------|---------------------------------|---------------------------------|--|
| | A (SQ) | B | C | D | E (Adapter Cutout) |
| 215145 | 12 ¹ / ₂ " | 2 ¹ / ₂ " | 6 ¹ / ₄ " | 5" | Cutout for 56C/145TC Adapter (Style 1, 1A, 1B) |
| 215146 | 12 ¹ / ₂ " | 2 ¹ / ₂ " | 6 ¹ / ₄ " | 5" | Cutout for 182TC/256TC Adapter (Style 7) |
| 215147 | 16 ¹ / ₂ " | 2 ¹ / ₂ " | 8 ¹ / ₄ " | 5 ¹ / ₂ " | Cutout for 56C/145TC Adapter (Style 1, 1A, 1B) |
| 215148 | 16 ¹ / ₂ " | 2 ¹ / ₂ " | 8 ¹ / ₄ " | 5 ¹ / ₂ " | Cutout for 182TC/256TC Adapter (Style 7) |
| 215149 | 16 ¹ / ₂ " | 2 ¹ / ₂ " | 8 ¹ / ₄ " | 6 ¹ / ₄ " | Cutout for 182TC/256TC Adapter (Style 6) |

*See page 131 to 136 for adapter styles

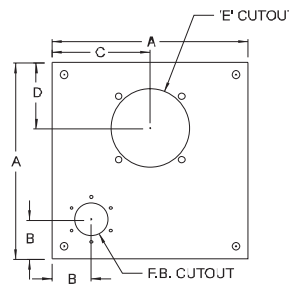
Series 1 Cover Plates (215145, 215146)



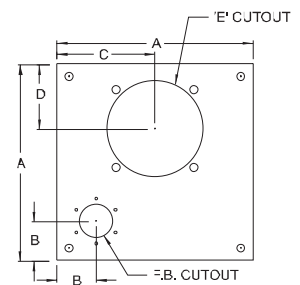
Blank Cover
Part Number 99920



Cover with
Filler Breather Cutout
Part Number 99923

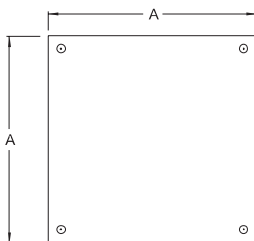


Cover with
Filler Breather Cutout and
56C/145TC Adapter Cutout
(Adapter Style 1, 1A, 1B)
Part Number 99926

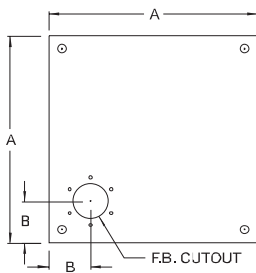


Cover with
Filler Breather Cutout and
182TC/256TC Adapter Cutout
(Adapter Style 7)
Part Number 99929

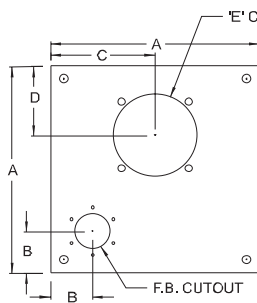
Series 2 Cover Plates (215147, 215148, 215149)



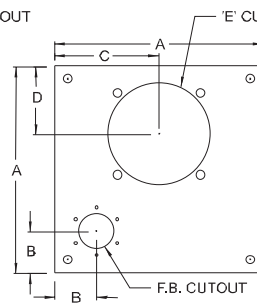
Blank Cover
Part Number 99931



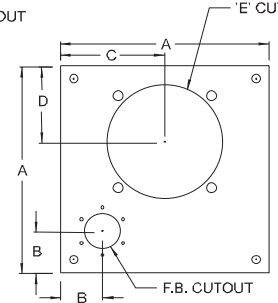
Cover with
Filler Breather Cutout
Part Number 99934



Cover with
Filler Breather Cutout and
56C/145TC Adapter Cutout
(Adapter Style 1, 1A, 1B)
Part Number 99937



Cover with
Filler Breather Cutout and
182TC/256TC Adapter Cutout
(Adapter Style 7)
Part Number 99940



Cover with
Filler Breather Cutout and
182TC/256TC Adapter Cutout
(Adapter Style 6)
Part Number 99943

| Cover Plate Part Number | Description | Series |
|-------------------------|--------------------------------------|--------|
| 99920 | Blank Cover | 1 |
| 99923 | Cover with Filler Breather Cutout | 1 |
| 99926 | Cover with 56C/145TC Adapter Cutout | 1 |
| 99929 | Cover with 182C/256TC Adapter Cutout | 1 |

| Cover Plate Part Number | Description | Series |
|-------------------------|--|--------|
| 99931 | Blank Cover | 2 |
| 99934 | Cover with Filler Breather Cutout | 2 |
| 99937 | Cover with 56C/145TC Adapter Cutout | 2 |
| 99940 | Cover with 182C/256TC Adapter Cutout | 2 |
| 99943 | Cover with 182C/256TC Vert. Adapter Cutout | 2 |

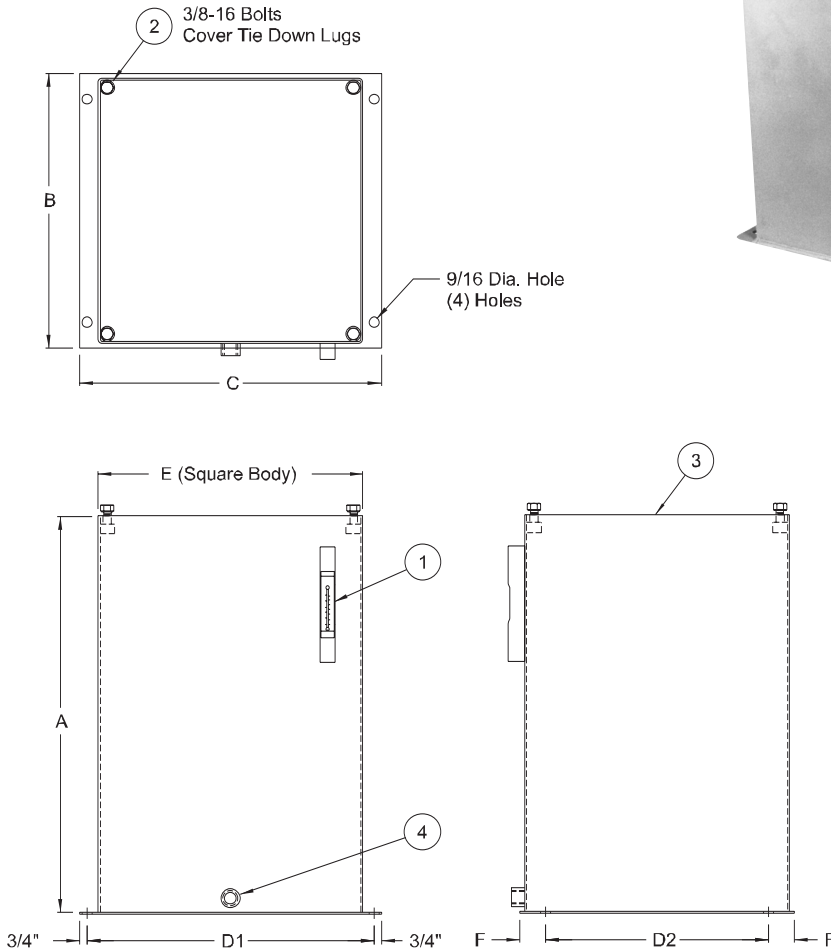
Note: All cover plates include Filler Breather bayonet style 40 micron (5201)

NOTE: WITH VESCORS' POLICY OF CONSTANTLY IMPROVING ITS PRODUCTS, SPECIFICATIONS ARE SUBJECT TO CHANGE WITHOUT NOTICE.



NON-J.I.C. RESERVOIRS

Vertical Style



Each Vertical Non-J.I.C. Type Reservoir Includes:

1. (1) Oil Level & Temp. Gauge
2. (4) Cover Mounting Bolts
3. Channel gasket for cover plate seal
4. (1) 1/2" NPT Drain
5. Steel construction with customer choice of top
6. Outside of reservoir prime painted
7. Interior of reservoir coated with rust preventive oil

Sight Gauge

10 to 40 gallon - 5" sight gauge (ALG5T)

NOTE :Cover Plate ordered as separate item (see page 22)

Sight Gauge shipped loose inside reservoir, filler breather included with cover plate

| Capacity Gallons | Vescor Part Number | Tank Dimensions (Inches) | | | | | | | Shipping Weight |
|------------------|--------------------|--------------------------|---------|---------|--------------------------------------|-----|---------|--------|-----------------|
| | | A | B | C | Mounting Centers D1 ±1/8" D2±1/8" | | E | F | |
| 10 | 215173 | 15" | 16 1/2" | 19" | 17 1/2" | 14" | 16" | 1 1/4" | 65# |
| 20 | 215174 | 18" | 18" | 20 1/2" | 19" | 15" | 17 1/2" | 1 1/2" | 80# |
| 30 | 215175 | 26" | 18" | 20 1/2" | 19" | 15" | 17 1/2" | 1 1/2" | 100# |
| 40 | 215176 | 34" | 18" | 20 1/2" | 19" | 15" | 17 1/2" | 1 1/2" | 120# |

*Weights do not include covers



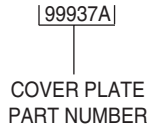
COVER PLATES

ORDERING INFORMATION

VESCOR Vertical Non-JIC Reservoirs allow you to choose the style cover plate for your individual needs.

Reservoir and Cover Plate must be ordered as separate items. Please use Part Number when ordering.

NOTE: Filler Breathers are included with cover plates only

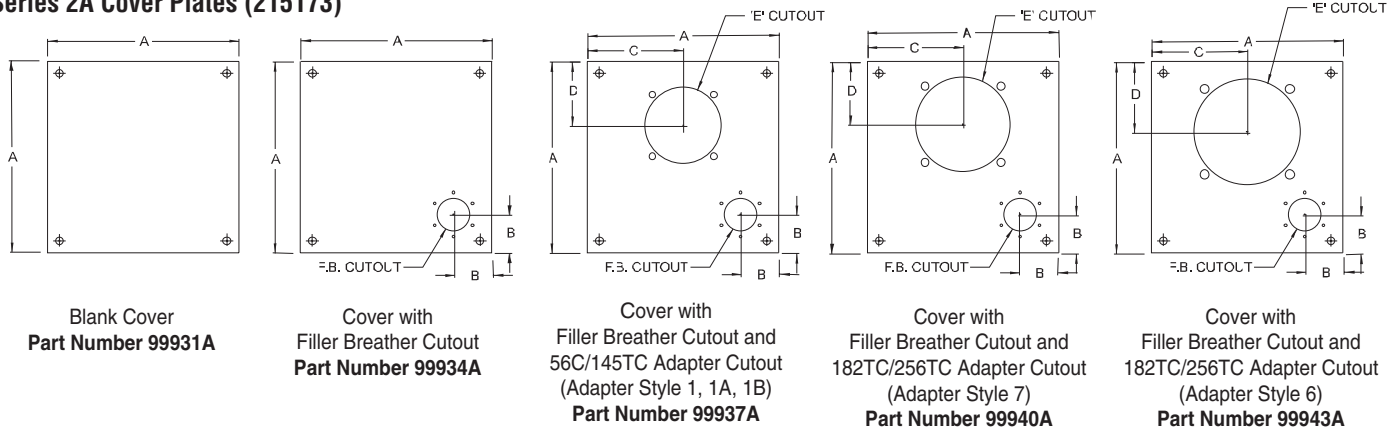


Example:
Cover Plate for 10 Gallon Non-JIC Reservoir
(215173) with 56C/145TC Adapter Cutout (Style 1)

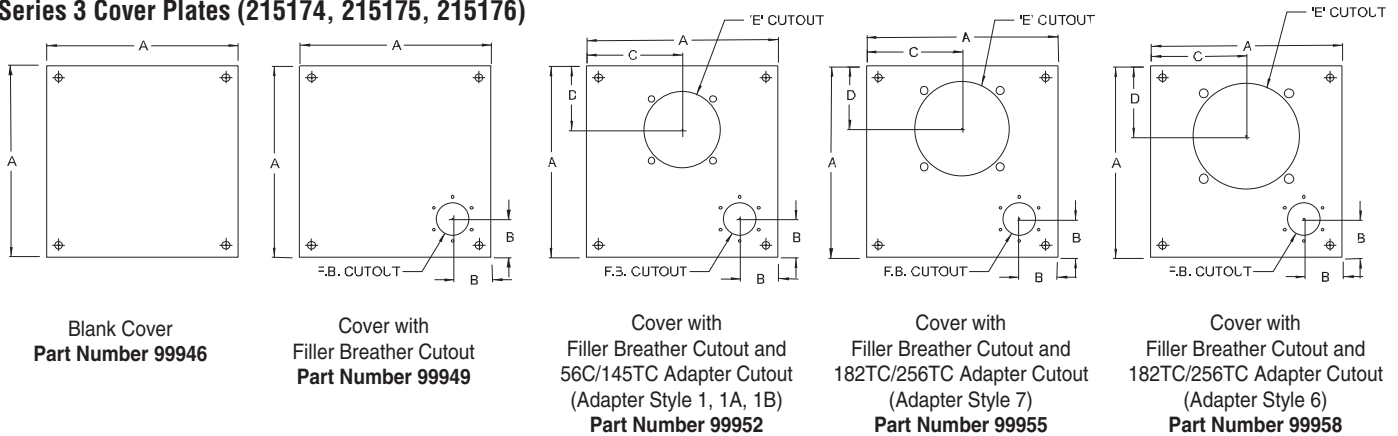
| Reservoir Part Number | Standard Dimensions for Vertical Tops | | | | |
|-----------------------|---------------------------------------|--------|--------|--------|--|
| | A (SQ) | B | C | D | E (Adapter Cutout) |
| 215173 | 16 1/2" | 2 1/2" | 8 1/4" | 5 1/2" | Cutout for 56C/145TC Adapter (Style 1, 1A, 1B) |
| 215173 | 16 1/2" | 2 1/2" | 8 1/4" | 5 1/2" | Cutout for 182TC/256TC Adapter (Style 7) |
| 215174 | 18" | 2 1/2" | 9" | 5 1/2" | Cutout for 56C/145TC Adapter (Style 1, 1A, 1B) |
| 215175 | 18" | 2 1/2" | 9" | 5 1/2" | Cutout for 182TC/256TC Adapter (Style 7) |
| 215176 | 18" | 2 1/2" | 9" | 6 1/4" | Cutout for 182TC/256TC Adapter (Style 6) |

*See pages 131to 136 for adapter styles

Series 2A Cover Plates (215173)



Series 3 Cover Plates (215174, 215175, 215176)



| Cover Plate Part Number | Description | Series |
|-------------------------|--------------------------------------|--------|
| 99931A | Blank Cover | 2A |
| 99934A | Cover with Filler Breather Cutout | 2A |
| 99237A | Cover with 56C/145TC Adapter Cutout | 2A |
| 99940A | Cover with 182C/256TC Adapter Cutout | 2A |
| 99943A | Cover with 182C/256TC Adapter Cutout | 2A |

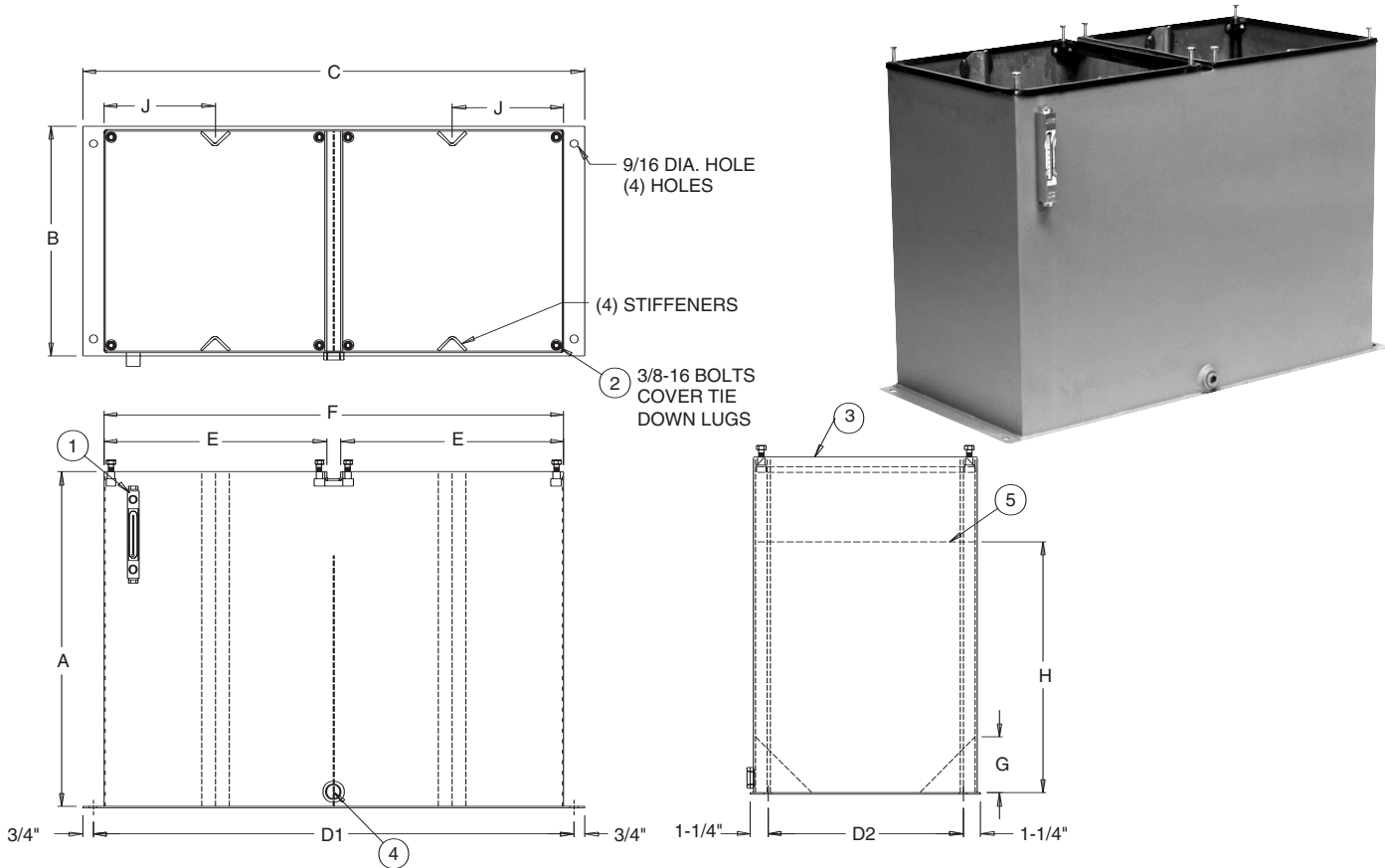
| Cover Plate Part Number | Description | Series |
|-------------------------|--|--------|
| 99946 | Blank Cover | 3 |
| 99949 | Cover with Filler Breather Cutout | 3 |
| 99952 | Cover with 56C/145TC Adapter Cutout | 3 |
| 99955 | Cover with 182C/256TC Adapter Cutout | 3 |
| 99958 | Cover with 182C/256TC Vert. Adapter Cutout | 3 |

Note: All cover plates include Filler Breather bayonet style 40 micron (5201)

NOTE: WITH VESCORS' POLICY OF CONSTANTLY IMPROVING ITS PRODUCTS, SPECIFICATIONS ARE SUBJECT TO CHANGE WITHOUT NOTICE.



DUAL VERTICAL RESERVOIRS



Each Dual Vertical Non-JIC Reservoir Includes

1. (1) Oil Level and Temperature Gauge
2. (8) Cover Mounting Bolts
3. (2) Channel Gaskets for Cover Plate Seals
4. (1) 3/4" NPT Drain.
5. (1) Baffle with Cutouts for Circulation
6. Steel Construction with Customer Choice of Top
7. Exterior of Reservoir Prime Painted
8. Interior of Reservoir Coated with Rust Preventive oil.

Note: Cover Plates ordered as separate items. See pages 20 and 22

Dual Vertical Reservoirs - Series 2

| Capacity Gallons | Vescor Part Number | Tank Dimensions (inches) | | | | | | | | | | Shipping Weight |
|------------------|--------------------|--------------------------|---------|-----|------------------|----------|-----|-----|----|-----|----|-----------------|
| | | A | B | C | Mounting Centers | | E | F | G | H | J | |
| | | | | | D1 ±1/8" | D2 ±1/8" | | | | | | |
| 40 | 215188 | 24" | 16 1/2" | 36" | 34 1/2" | 14" | 16" | 33" | 4" | 18" | 8" | 128# |
| 60 | 215189 | 36" | 16 1/2" | 36" | 34 1/2" | 14" | 16" | 33" | 4" | 24" | 8" | 179# |

All Series 2 Vertical Reservoirs use standard Vescor Series 2 cover plates. See page 20 for cover plate availability. (2) cover plates required per reservoir.

Dual Vertical Reservoirs - Series 3

| Capacity Gallons | Vescor Part Number | Tank Dimensions (inches) | | | | | | | | | | Shipping Weight |
|------------------|--------------------|--------------------------|-----|-----|------------------|----------|---------|-----|----|---------|--------|-----------------|
| | | A | B | C | Mounting Centers | | E | F | G | H | J | |
| | | | | | D1 ±1/8" | D2 ±1/8" | | | | | | |
| 50 | 215195 | 22 1/2" | 18" | 39" | 37 1/2" | 15 1/2" | 17 1/2" | 36" | 5" | 19" | 8 3/4" | 135# |
| 60 | 215196 | 26 1/2" | 18" | 39" | 37 1/2" | 15 1/2" | 17 1/2" | 36" | 5" | 22 1/2" | 8 3/4" | 154# |

All Series 3 Vertical Reservoirs use standard Vescor Series 3 cover plates. See page 22 for cover plate availability. (2) cover plates required per reservoir.



NON-J.I.C. RESERVOIRS

Horizontal Removable Top



Each Removable Top Horizontal Non-J.I.C. Reservoir Includes:

1. (1) Oil Level & Temp. Gauge
2. (1) Filler Breather (no hole provided)
3. (1) 3/4" NPT Drain
4. Neoprene foam gasket for top plate seal
5. Steel construction with removable top
6. Exterior of reservoir prime painted
7. Interior of reservoir coated with a rust preventive oil

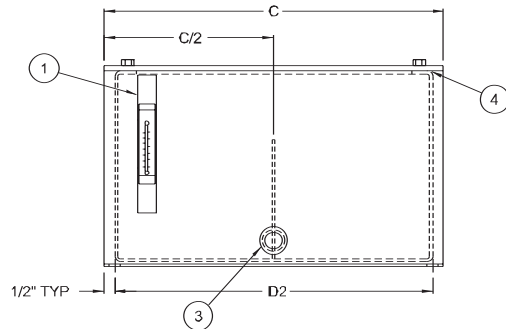
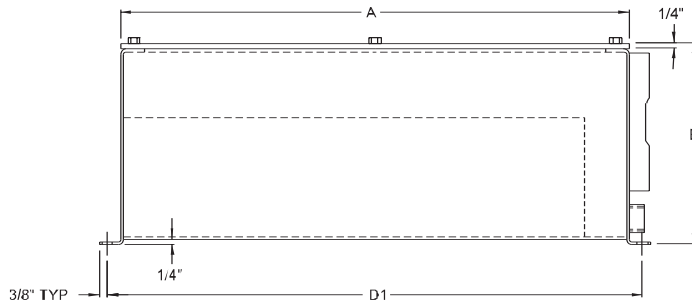
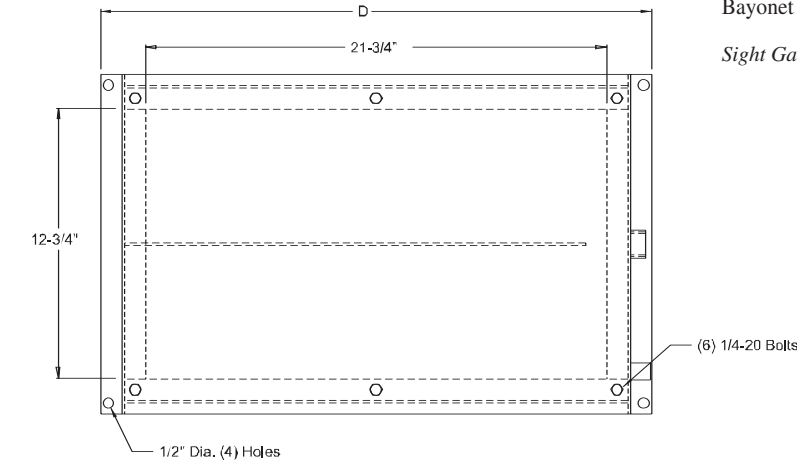
Sight Gauge

10 to 40 gallon - 5" sight gauge (ALG5T)

Filler Breather

Bayonet Style - 40 micron (5201)

Sight Gauge and Filler Breather shipped loose inside reservoir



| Capacity Gallons | Vescor Part Number | Tank Dimensions (Inches) | | | | Mounting Centers | | Shipping Weight | Vescor Part Number No Baffle |
|------------------|--------------------|--------------------------|-----------|-----|-----|------------------|----------------|-----------------|------------------------------|
| | | A | B | C | D | $D_1 \pm 1/8"$ | $D_2 \pm 1/8"$ | | |
| 10 | 5300 | 24" | 9 $1/2"$ | 16" | 26" | 25 $1/4"$ | 15" | 70# | 215310 |
| 20 | 5301 | 24" | 15 $1/2"$ | 16" | 26" | 25 $1/4"$ | 15" | 80# | 215320 |
| 30 | 5302 | 24" | 21 $1/2"$ | 16" | 26" | 25 $1/4"$ | 15" | 110# | 215330 |
| 40 | 5303 | 24" | 27 $1/2"$ | 16" | 26" | 25 $1/4"$ | 15" | 135# | 215340 |



NON-J.I.C. RESERVOIRS

Horizontal Welded Top

ORDERING INFORMATION

VESCOR Horizontal Non-JIC Reservoirs can be ordered with mounting for In-Tank Water Cooler (TMWC001-*)
Please use Part Number when ordering.

| | | |
|--------------------------|---|---|
| 5140 | - | TMWC |
| RESERVOIR PART NUMBER | | OMIT - Standard Reservoir TMWC - Cutout for in-tank cooler |

Note: In-tank cooler purchased as separate item
Sight Gauge and Filler Breather shipped loose inside reservoir



Each Horizontal Non-J.I.C. Reservoirs includes:

- 1 (1) Oil Level & Temp. Gauge
2. (1) Filler Breather (hole not provided)
- * 3. (2) 6" Cleanout Covers or In-Tank Oil Cooler Mounting
4. Baffle with cutout for circulation
5. (1) 3/4" NPT Drain
6. Steel construction with welded top
7. Exterior of reservoir prime painted
8. Interior of reservoir coated with rust preventive oil

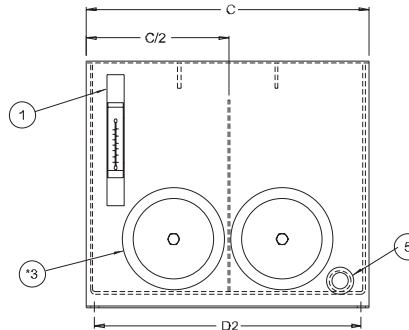
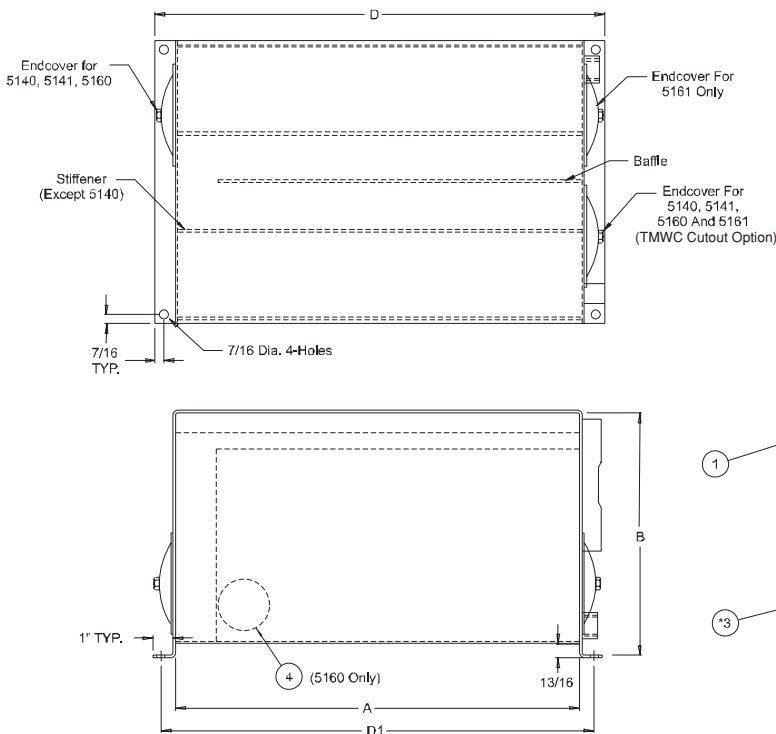
Sight Gauge

10 to 40 gallon - 5" sight gauge (ALG5T)

Filler Breather

Bayonet Style - 40 micron (5201)

* NOTE: In-Tank Oil Cooler is installed in place of (1) 6" cleanout cover

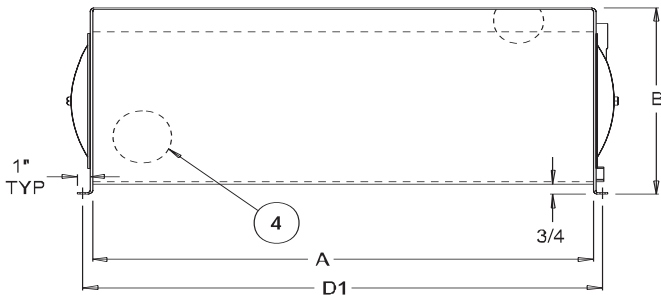
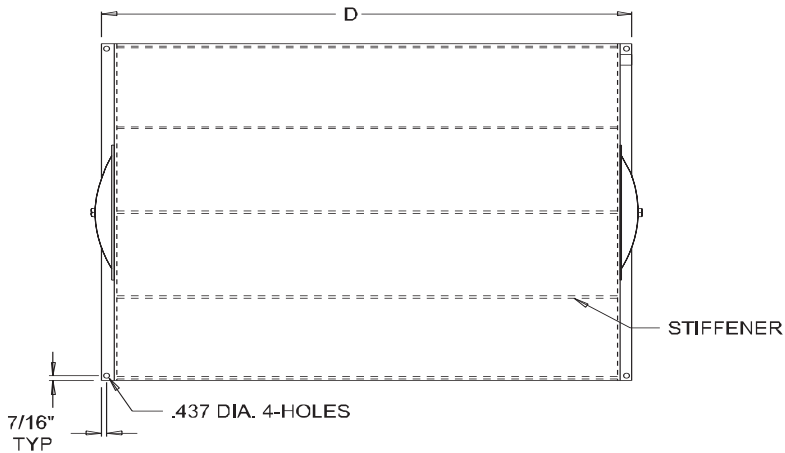


| Capacity Gallons | Vescor Part Number | Tank Dimensions (inches) | | | | Mounting Centers | | Shipping Weight |
|------------------|--------------------|--------------------------|-----|-----|---------|----------------------|----------------------|-----------------|
| | | A | B | C | D | D ₁ ±1/8" | D ₂ ±1/8" | |
| 10 | 5140 | 20" | 12" | 14" | 22 1/4" | 21 3/8" | 13 1/8" | 50# |
| 20 | 5141 | 24" | 14" | 18" | 26 1/4" | 25 3/8" | 17 1/8" | 80# |
| 30 | 5160 | 36" | 14" | 18" | 38 1/4" | 37 3/8" | 17 1/8" | 100# |
| 40 | 5161 | 36" | 14" | 24" | 38 1/4" | 37 3/8" | 23 1/8" | 130# |



NON-J.I.C. RESERVOIRS

Horizontal Welded Top



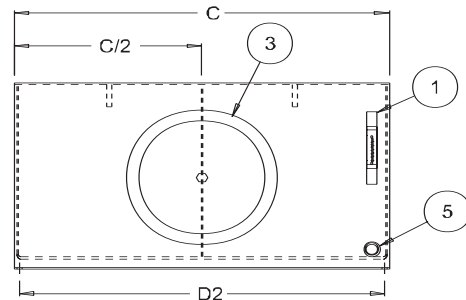
Each Horizontal Non-J.I.C. Reservoir includes:

1. (1) Oil Level & Temp. Gauge
2. (1) Filler Breather (hole not provided)
3. (2) 12" Cleanout Covers
4. Baffle with cutouts for circulation
5. (1) 3/4" NPT Drain
6. Steel construction with welded top
7. Exterior of reservoir prime painted
8. Interior of reservoir coated with rust preventive oil

Sight Gauge

60 to 100 gallon - 5" sight gauge (ALG5T)

Sight Gauge and Filler Breather shipped loose inside reservoir



| Capacity Gallons | Vescor Part Number | Tank Dimensions (inches) | | | | Mounting Centers | | Shipping Weight |
|------------------|--------------------|--------------------------|----------------------------------|-----|----------------------------------|----------------------------------|----------------------------------|-----------------|
| | | A | B | C | D | D1 ±1/8" | D2 ±1/8" | |
| 60 | 5162 | 40" | 16 ⁵ / ₈ " | 30" | 42 ³ / ₈ " | 41 ¹ / ₂ " | 29 ¹ / ₈ " | 270# |
| 80 | 5163 | 48" | 16 ⁵ / ₈ " | 30" | 50 ³ / ₈ " | 49 ¹ / ₂ " | 29 ¹ / ₈ " | 320# |
| 100 | 5164 | 52" | 16 ⁵ / ₈ " | 36" | 54 ³ / ₈ " | 53 ¹ / ₂ " | 35 ¹ / ₈ " | 410# |
| 100 | 5165 | 48" | 19" | 30" | 50 ³ / ₈ " | 49 ¹ / ₂ " | 29 ¹ / ₈ " | 410# |



VARI-PAK RESERVOIRS

2, 3 and 5 Gallon Capacity



Each Vari-Pak Reservoir Includes:

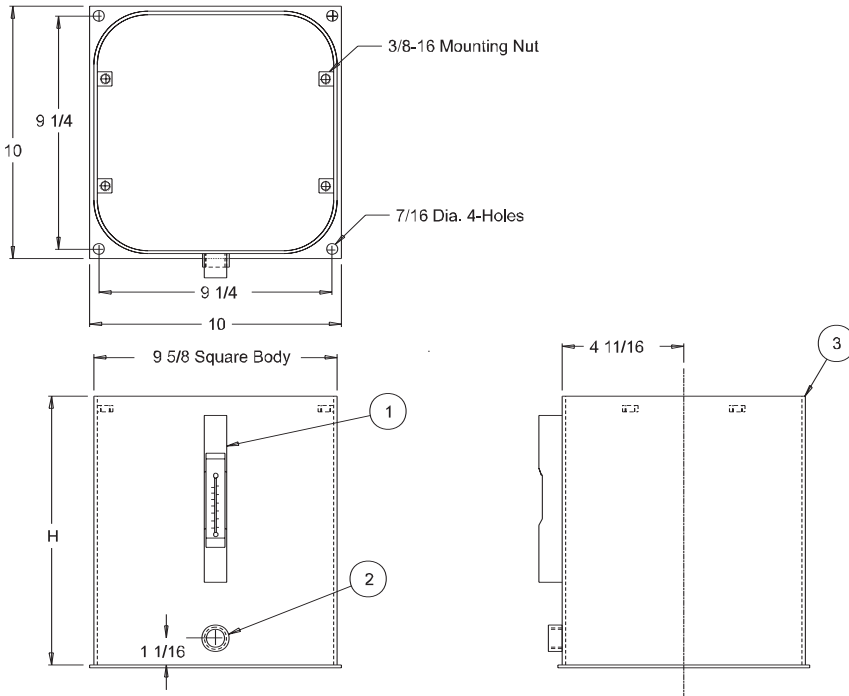
1. (1) Oil Level & Temp. Gauge
2. (1) 1/2" NPT Drain
3. Channel Gasket for Top Plate Seal
4. Steel Construction with Customer Choice of Top Plate
5. Exterior of reservoir prime painted
6. Interior of reservoir coated with rust preventive oil

Sight Gauge

2, 3 to 5 gallon - 5" sight gauge (ALG5T)

NOTE: Cover Plate ordered as separate item (see below)

Sight Gauge shipped loose inside reservoir, Filler Breather included with cover plate



| Vescor Part Number | H (height) | Capacity | Shipping Weight |
|--------------------|------------|-----------|-----------------|
| 29902 | 8" | 2 Gallons | 18# |
| 29903 | 12" | 3 Gallons | 23# |
| 29905 | 16" | 5 Gallons | 28# |

*Weight does not include covers

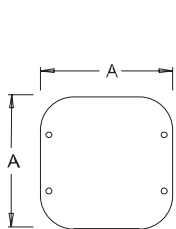
COVER PLATES

Vescor Vari-Pak Reservoirs allow you to choose the style cover plate for your individual needs.

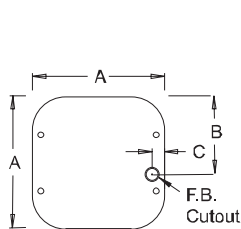
Reservoir and Cover Plate must be ordered as separate items. Please use part number when ordering.

| Cover Part Number | A (SQ) | B | C | D | E | F (ADAPTER CUTOUT) |
|----------------------------------|---------|----------|---------|---------|----------|---|
| 99908 99909 99910 99911 | 10 1/8" | 5 15/16" | 1 3/16" | 5 1/16" | 3 21/32" | cutout for 56/145TC adapter (style 1, 1A, 1B) |
| 99907 | 10 1/8" | N/A | N/A | 5 1/16" | 5 1/16" | cutout for 182/256TC adapter only (style 7) |

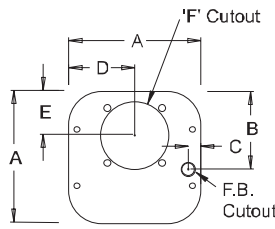
All covers include (1) PMB07-10 Mini Breather



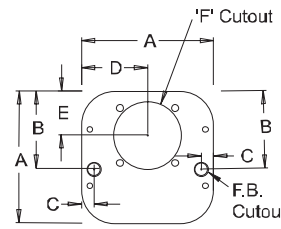
Style A Cover Plate
Blank Cover
Part Number 99908



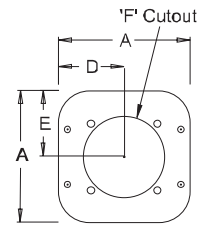
Style B Cover Plate
with Breather Cutout
Part Number 99909



Style C Cover Plate
with Breather Cutout and
56C/145TC Adapter Cutout
Part Number 99910



Style D Cover Plate
with Breather Cutout and
56C/145TC Adapter Cutout
1/2" NPT Connection
Part Number 99911

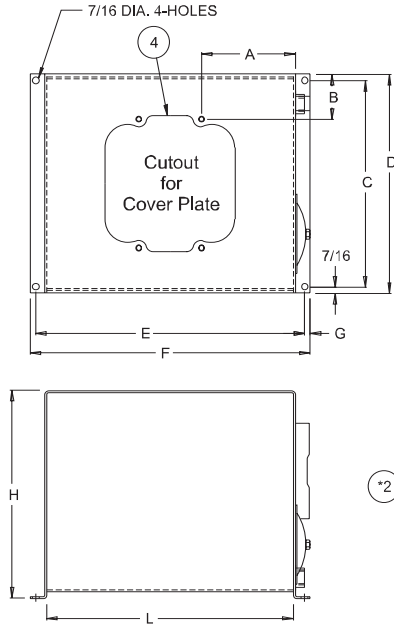


Style E Cover Plate
182/256TC Adapter Cutout
Part Number 99907



VARI-PAK RESERVOIRS

8, 10 and 14 Gallon Capacity



Each Vari-Pak Reservoir Includes:

1. (1) Oil Level & Temp. Gauge
- * 2. 6" Cleanout Cover or In-Tank Oil Cooler mounting *(NOTE: In-Tank Oil cooler is installed in place of 6" cleanout cover)
3. (1) 3/4" NPT Drain
4. Buna-N Gasket for Top Plate Seal
5. Steel Construction with Customer Choice of Top Plate
6. Exterior of reservoir prime painted
7. Interior of reservoir coated with rust preventive oil

Sight Gauge

8 to 14 gallon - 5" sight gauge (ALG5T)

NOTE: Cover Plate ordered as separate item (see below)

Sight Gauge shipped loose inside reservoir, Filler Breather included with cover plate

| Capacity Gallons | Vescor Part Number | Tank Dimensions (inches) | | | | | | | | | Shipping Weight |
|------------------|--------------------|---------------------------------|----------------------------------|----------------------------------|----------------------------------|----------------------------------|----------------------------------|-------|----------------------------------|----------------------------------|-----------------|
| | | A | B | C | D | E | F | G | H | L | |
| 8 | 29908 | 5" | 1 ⁵ / ₈ " | 11 ¹ / ₈ " | 12" | 13 ³ / ₈ " | 14 ¹ / ₄ " | 7/16" | 18 ¹ / ₈ " | 12" | 45# |
| 10 | 29910 | 6 ³ / ₈ " | 3 ¹ / ₁₆ " | 14" | 14 ⁷ / ₈ " | 18 ¹ / ₈ " | 19" | 7/16" | 14 ¹ / ₈ " | 16 ³ / ₄ " | 57# |
| 14 | 29914 | 7" | 1 ⁵ / ₈ " | 11 ¹ / ₈ " | 12" | 19 ³ / ₈ " | 20 ¹ / ₄ " | 7/16" | 20 ¹ / ₈ " | 18" | 65# |

ORDERING INFORMATION

VESCOR Vari-Pak Reservoirs can be ordered with mounting for In-Tank Water Cooler (TMWC001-*)
Please use Part Number when ordering.

*In-Tank cooler purchased as separate item

[29908] - [TMWC]
RESERVOIR OMIT - Standard Reservoir
PART NUMBER TMWC - cutout for in-tank cooler

COVER PLATES

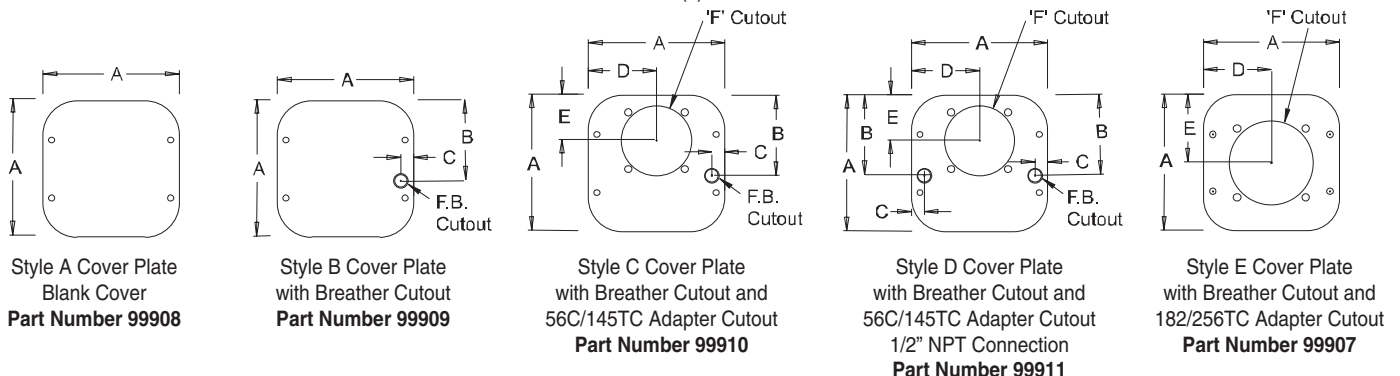
Vescor Vari-Pak Reservoirs allow you to choose the style cover plate for your individual needs.

Reservoir and Cover Plate must be ordered as separate items.

Please use part number when ordering

| Cover Part Number | A (SQ) | B | C | D | E | F (ADAPTER CUTOUT) |
|----------------------------------|----------------------------------|-----------------------------------|----------------------------------|----------------------------------|-----------------------------------|---|
| 99908 99909 99910 99911 | 10 ¹ / ₈ " | 5 ¹⁵ / ₁₆ " | 1 ³ / ₁₆ " | 5 ¹ / ₁₆ " | 3 ²¹ / ₃₂ " | cutout for 56/145TC adapter (style 1, 1A, 1B) |
| 99907 | 10 ¹ / ₈ " | N/A | N/A | 5 ¹ / ₁₆ " | 5 ¹ / ₁₆ " | cutout for 182/256TC adapter only (style 7) |

All covers include (1) PMB07-10 Mini Breather

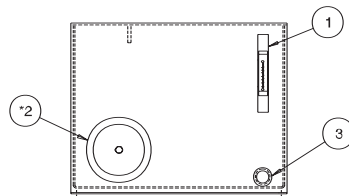
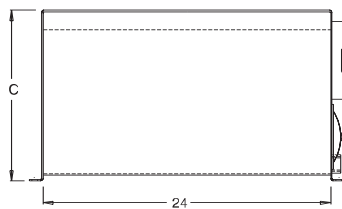
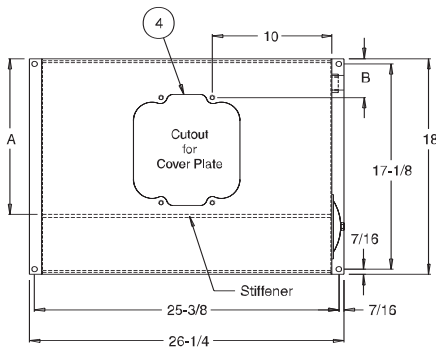


NOTE: WITH VESCORS' POLICY OF CONSTANTLY IMPROVING ITS PRODUCTS, SPECIFICATIONS ARE SUBJECT TO CHANGE WITHOUT NOTICE.



VARI-PAK RESERVOIRS

20 and 25 Gallon Capacity



Each Vari-Pak Reservoir Includes:

1. (1) Oil Level & Temp. Gauge
- * 2. 6" Cleanout Cover or In-Tank Oil Cooler mounting
*(NOTE: In-Tank Oil cooler is installed in place of 6" cleanout cover)
3. (1) 3/4" NPT Drain
4. Buna-N Gasket for Top Plate Seal
5. Steel Construction with Customer Choice of Top Plate
6. Exterior of reservoir prime painted
7. Interior of reservoir coated with rust preventive oil

Sight Gauge

20 to 25 gallon - 5" sight gauge (ALG5T)

NOTE: Cover Plate ordered as separate item (see below)

Sight Gauge shipped loose inside reservoir, Filler Breather included with cover plate

| Capacity Gallons | Vescor Part Number | Tank Dimensions (inches) | | | Shipping Weight |
|------------------|--------------------|--------------------------|--------|---------|-----------------|
| | | A | B | C | |
| 20 | 29920 | 13" | 3 1/4" | 14 1/4" | 80 |
| 25 | 29925 | 12 1/4" | 3" | 18 1/8" | 94 |

ORDERING INFORMATION

VESCOR Vari-Pak Reservoirs can be ordered with mounting for In-Tank Water Cooler (TMWC001-*)
Please use Part Number when ordering.
*In-Tank cooler purchased as separate item

| | | |
|-----------------------|---|---|
| 29920 | - | TMWC |
| RESERVOIR PART NUMBER | | OMIT - Standard Reservoir TMWC - cutout for in-tank cooler |

COVER PLATES

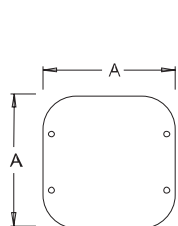
Vescor Vari-Pak Reservoirs allow you to choose the style cover plate for your individual needs.

Reservoir and Cover Plate must be ordered as separate items.

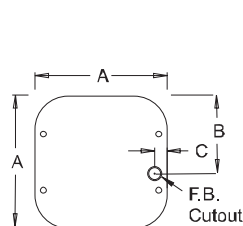
Please use part number when ordering

| COVER PART NUMBER | A (SQ) | B | C | D | E | F (ADAPTER CUTOUT) |
|-------------------|---------|----------|---------|---------|-----------|---|
| 99908 | 10 1/8" | 5 15/16" | 1 3/16" | 5 1/16" | 3 2 1/32" | cutout for 56/145TC adapter (style 1, 1A, 1B) |
| 99909 | | | | | | |
| 99910 | | | | | | |
| 99911 | | | | | | |
| 99907 | | N/A | N/A | | 5 1/16" | cutout for 182/256TC adapter only (style 7) |

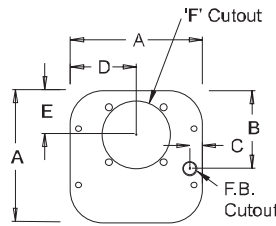
All covers includes (1) PMB07-10 Mini Breather



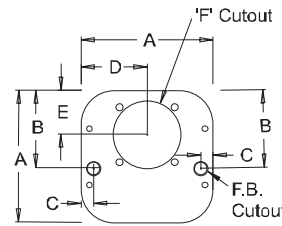
Style A Cover Plate
Blank Cover
Part Number 99908



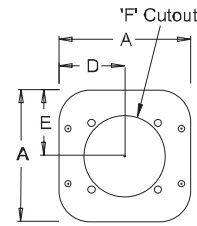
Style B Cover Plate
with Breather Cutout
Part Number 99909



Style C Cover Plate
with Breather Cutout and
56C/145TC Adapter Cutout
Part Number 99910



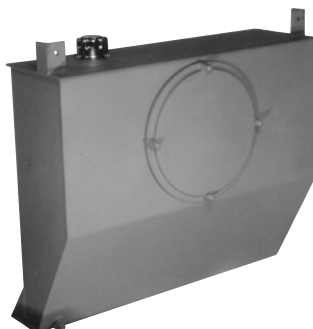
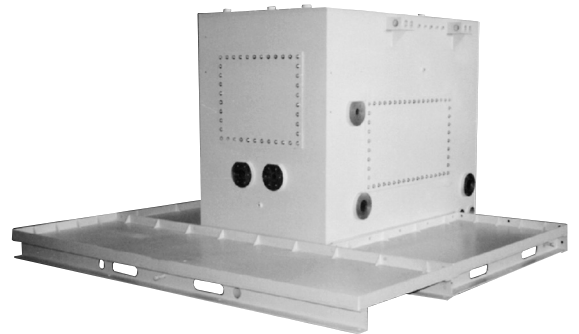
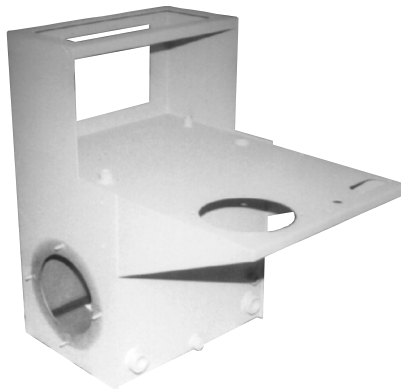
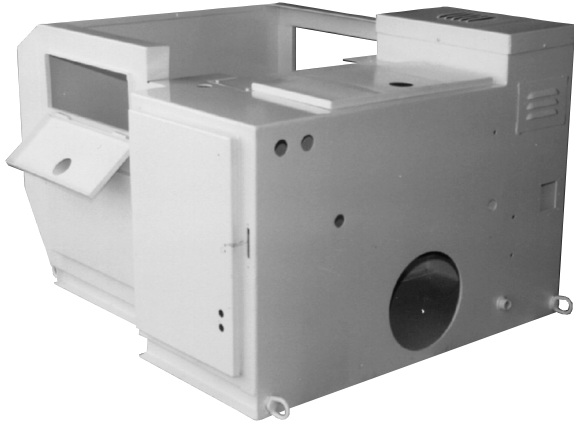
Style D Cover Plate
with Breather Cutout and
56C/145TC Adapter Cutout
1/2" NPT Connection
Part Number 99911



Style E Cover Plate
with Breather Cutout and
182/256TC Adapter Cutout
Part Number 99907



CUSTOM RESERVOIRS



Custom Reservoirs Are Standard

For over 30 years, VESCOR has signified excellence in hydraulic reservoirs and accessories. VESCOR has always offered exceptional quality and service in the manufacturing of hydraulic reservoirs for a wide variety of applications.

While offering a complete line of standard reservoirs, VESCOR is one of the largest manufacturer of customized tanks and reservoirs. VESCOR can manufacture your customized reservoir in quantities of one to one hundred. A complete, totally updated engineering department assists customers in developing the most cost effective and practical design for every application.

VESCOR is proud of its earned reputation for quality and on-time performance, this is due in part to refined engineering specifications and quality control efforts. VESCOR offers a depth of experience few competitors can match. VESCORS' personnel are continually trained in the use of new technology. New advanced equipment maintains the highest possible manufacturing standards.

VESCORS' *off the shelf* reservoirs are always available. Customers are often able to utilize *modified standards* in their design, thus saving in manufacturing costs.

When you need a quality tank or reservoir, call or e-mail VESCOR for assistance and a quote.

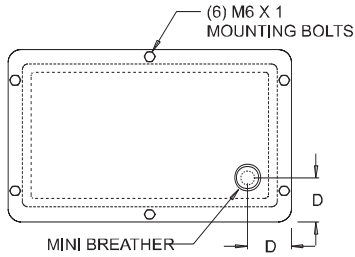
At VESCOR *Custom Reservoirs Are Standard.*



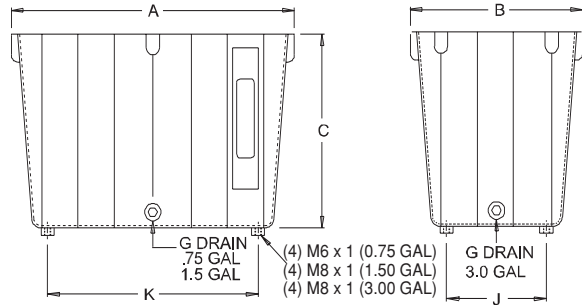
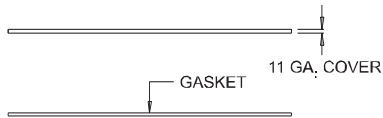
ALUMINUM RESERVOIRS

VESCOR® Aluminum Reservoirs

- Suitable for General Hydraulic Applications
- Drain Plug included on all sizes
- Vescor Guarantees 100% Leak Free
- Readily Available from Stock
- Tank Material – Cast Aluminum
- Cover Material – Steel



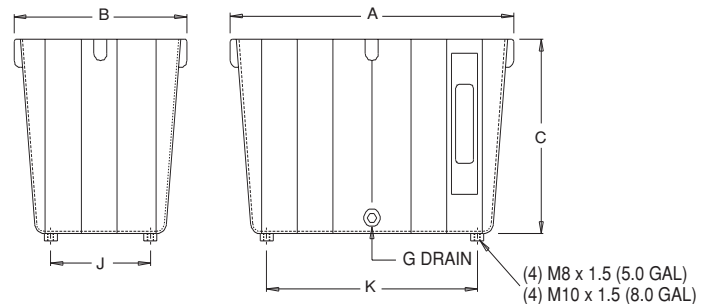
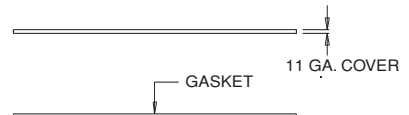
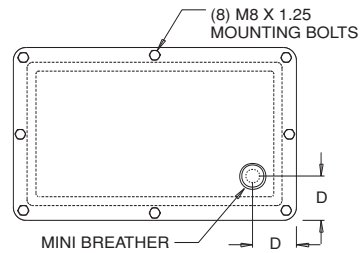
| Vescor Part Number | Capacity | | Dimensions | | | | | | |
|--------------------|----------|--------|------------|------|------|------|--------|------|------|
| | Gallons | Liters | A | B | C | D | G BSPP | J | K |
| 63700 | .75 | 3.00 | 8.66 | 6.29 | 5.91 | 1.25 | 1/4" | 4.13 | 6.50 |
| 63705 | 1.5 | 6.50 | 11.02 | 7.82 | 6.93 | 1.25 | 1/4" | 5.12 | 8.27 |
| 63706 | 3 | 12.00 | 13.39 | 9.72 | 8.66 | 1.25 | 3/8" | 6.69 | 9.84 |



Each Aluminum Reservoir Includes:

- (1) Steel Cover Plate
- (1) Mini Breather (3/4" NPT)
- (1) Cover Gasket
- (1) Set Cover Mounting Hardware
- (1) Oil Level & Temp. Gauge
- (1) Drain Plug

Sight Gauge and Filler Breather shipped loose inside reservoir



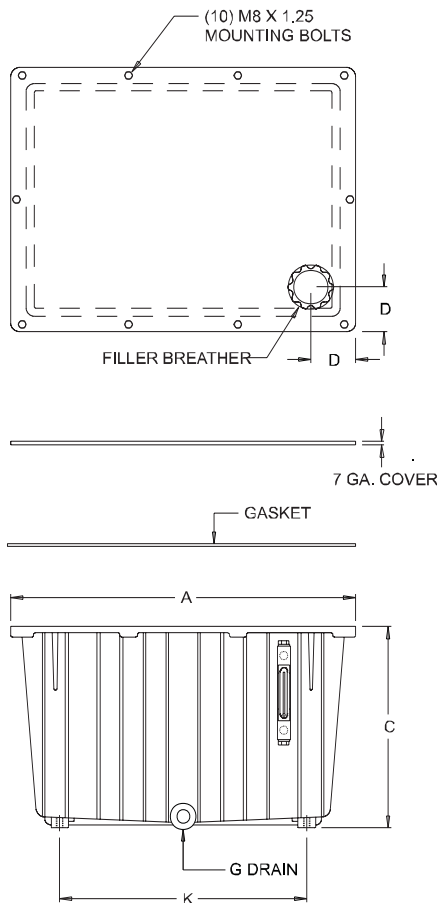
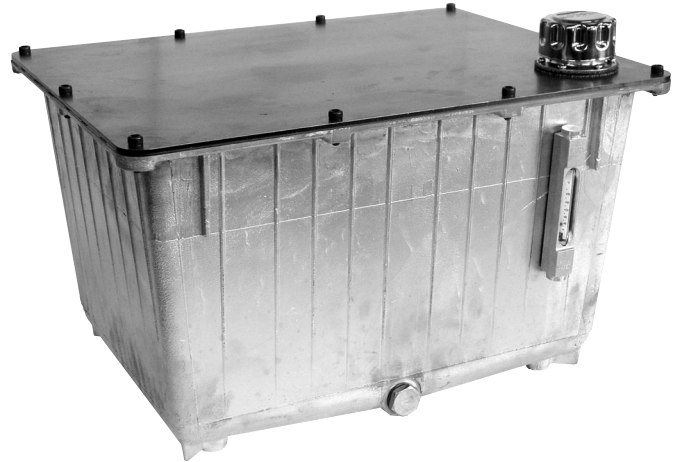
| Vescor Part Number | Capacity | | Dimensions | | | | | | |
|--------------------|----------|-------|------------|-------|-------|------|--------|------|-------|
| | Gallons | Liter | A | B | C | D | G BSPP | J | K |
| 63707 | 5.0 | 20.00 | 14.49 | 11.42 | 9.57 | 1.25 | 1/2" | 7.56 | 10.63 |
| 63708 | 8.0 | 30.00 | 19.29 | 13.39 | 11.22 | 1.25 | 1/2" | 6.93 | 12.84 |



ALUMINUM RESERVOIRS

VESCOR® Aluminum Reservoirs

- Suitable for General Hydraulic Applications
- Drain Plug included on all sizes
- Vescor Guarantees 100% Leak Free
- Readily Available from Stock
- Tank Material – Cast Aluminum
- Cover Material – Steel



Each Aluminum Reservoir Includes:

- (1) Steel Cover Plate
- (1) Filler Breather
- (1) Cover Gasket
- (1) Set Cover Mounting Hardware
- (1) Oil Level & Temp. Gauge
- (1) Drain Plug

Sight Gauge and Filler Breather shipped loose inside reservoir

| Vescor Part Number | Capacity | | Dimensions | | | | | | |
|--------------------|----------|--------|------------|-------|-------|------|--------|-------|-------|
| | Gallons | Liters | A | B | C | D | G BSPP | J | K |
| 63709 | 14.50 | 55.00 | 14.49 | 17.72 | 13.58 | 3.00 | 3/4" | 10.87 | 15.75 |
| 63710 | 20.00 | 76.00 | 23.43 | 17.72 | 18.31 | 3.00 | 3/4" | 10.87 | 15.75 |