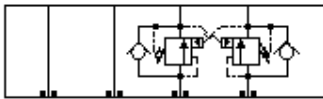
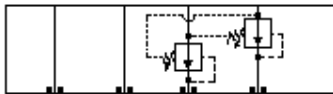


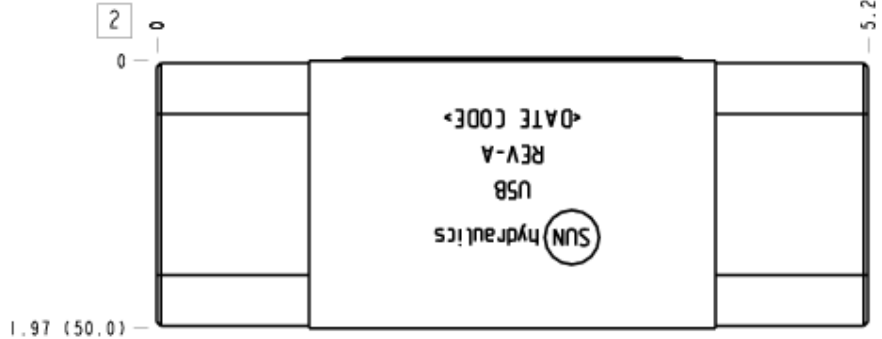
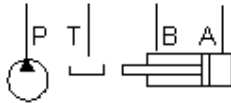
Pilot Operated Check, On A and B, Cross-Piloted



Counterbalance, On A and B, Cross-Piloted



Reducing, On A and B drain to opposite port



### TECHNICAL DATA

Body Type	Sandwich
Interface	ISO 05
Body Features	Cross pilot on A and B
Stack Height	1.97 in.
Seal Plate Included (see notes)	No
Open Cavities	2
Cavity	T-11A
Model Weight	2.04 lb.

### NOTES

**Important:** Carefully consider the maximum system pressure. The pressure rating of the manifold is dependent on the manifold material, with the port type/size a secondary consideration. Manifolds constructed of aluminum are not rated for pressures higher than 3000 psi (210 bar), regardless of the port type/size specified.

### INCLUDED COMPONENTS

Part	Description	Quantity
500-001-014	O-Ring	5

### CONFIGURATION OPTIONS

Model Code Example: **U5B**

#### MODIFIER

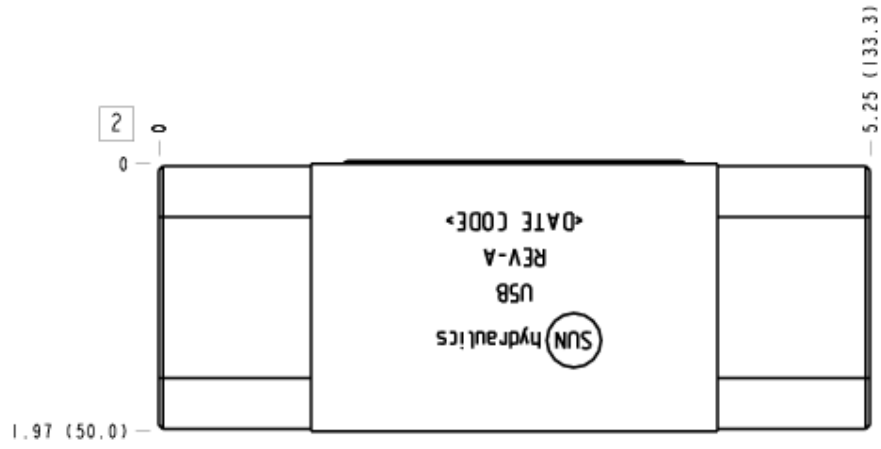
- 6061-T651 Aluminum, Buna-N**
- /S* 65-45-12 Ductile Iron, Buna-N, Blackened
- /V* 6061-T651 Aluminum, Viton
- /Y* 65-45-12 Ductile Iron, Viton, Blackened

### MANIFOLD FACES

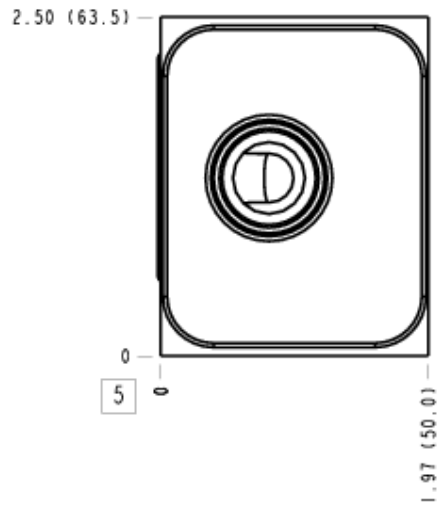
#### FACE GRID

1	2	3	4
5	6	7	8
9	10	11	12

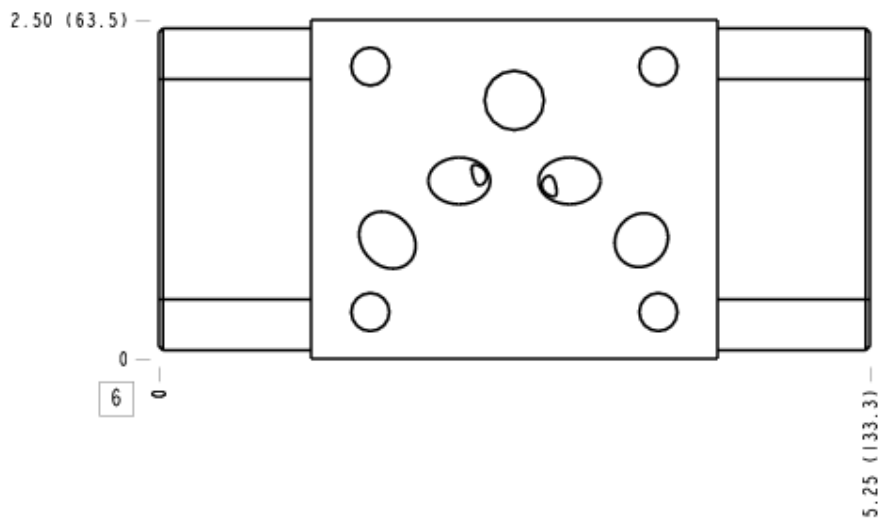
Face 2



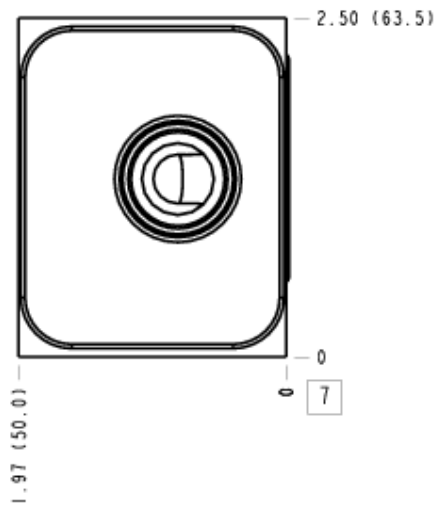
Face 5



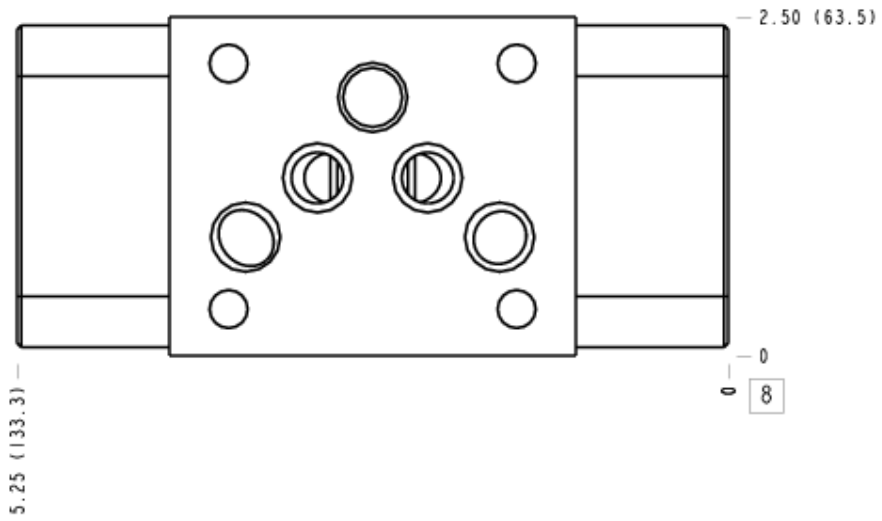
Face 6



**Face 7**



**Face 8**



**Face 10**

