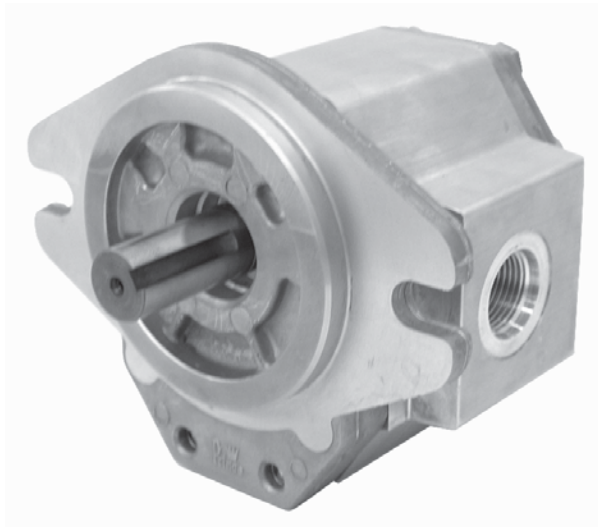
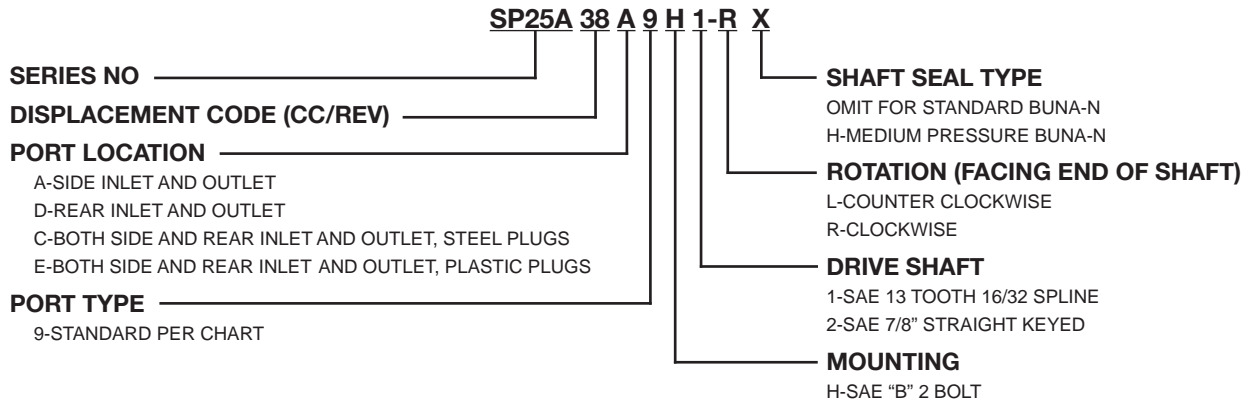


SP25 SERIES SAE "B" FLANGE PUMP



MODEL CODE



SPECIFICATIONS

| MODEL NUMBER | DISP. IN ³ /REV (PSI) | RATED PRESSURE | MAX ^o RPM | A | B | INLET PORT | | | OUTLET PORT | | | WT. (LB.) |
|--------------|----------------------------------|----------------|----------------------|------|------|------------|-------|-------------------|-------------|-------|-------------------|-----------|
| | | | | | | SAE SIZE | | FULL THREAD DEPTH | SAE SIZE | | FULL THREAD DEPTH | |
| | | | | | | SIDE | REAR | | SIDE | REAR | | |
| SP25A19 | 1.141 | 3000 | 3000 | 2.49 | 5.50 | 1 5/16-12 | UN-2B | 3/4" | 1 1/16-12 | UN-2B | 3/4" | 10.4 |
| SP25A22 | 1.349 | 3000 | 3000 | 2.55 | 5.62 | UN-2B | | | UN-2B | | | 10.6 |
| SP25A27 | 1.660 | 3000 | 3000 | 2.64 | 5.79 | 1 5/8-12 | UN-2B | 3/4" | 1 1/16-12 | UN-2B | 3/4" | 11.0 |
| SP25A32 | 2.008 | 3000 | 3000 | 2.74 | 5.99 | | | | UN-2B | | | UN-2B |
| SP25A38 | 2.318 | 3000 | 3000 | 2.83 | 6.17 | UN-2B | UN-2B | 3/4" | 1 5/16-12 | UN-2B | 3/4" | 12.4 |
| SP25A44 | 2.697 | 3000 | 3000 | 2.94 | 6.38 | | | | UN-2B | | | UN-2B |
| SP25A52 | 3.179 | 2500 | 3000 | 3.07 | 6.66 | 1 7/8-12 | UN-2B | 3/4" | 1 5/16-12 | UN-2B | 3/4" | 13.9 |
| SP25A63 | 3.869 | 2500 | 3000 | 3.27 | 7.05 | | | | UN-2B | | | UN-2B |

°Max. RPM for side ported models. Rear ported models should be restricted to 25 GPM due to limitation on the inlet port size. Standard Seal Kit for all SP25 Models is Prince Part No. PMCK-SP25.

PUMPS AND MOTORS