

Direct-acting sequence valve with reverse flow check

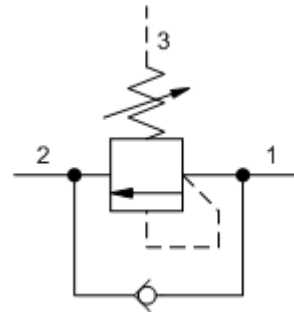
Capacity:
30 gpm (120
L/min.)

Functional Group:
Products : Cartridges : Sequence : 3 Port : Direct Acting with Reverse Flow
Check

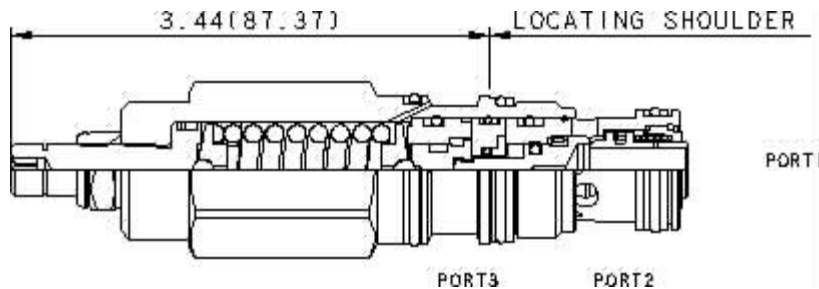
Model:
SCEA-LAN

Product Description

Direct-acting sequence valves with reverse-flow check will supply a secondary circuit with flow once the pressure at the inlet (port 1) has exceeded the valve setting. Additionally, these valves incorporate an integral check valve to provide reverse flow from port 2 (sequence) to port 1 (inlet). The pressure setting of a sequence valve controls the pressure at port 1 relative to the pressure at the drain (port 3).



Download



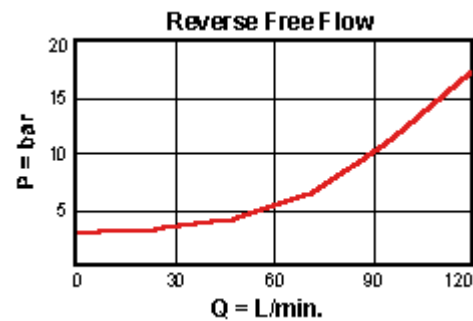
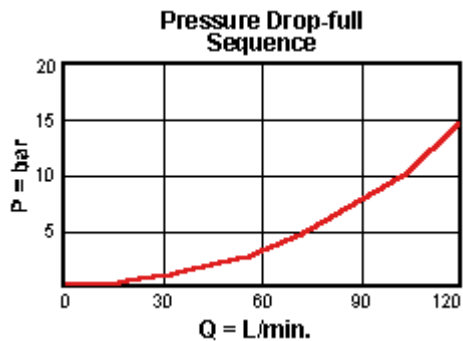
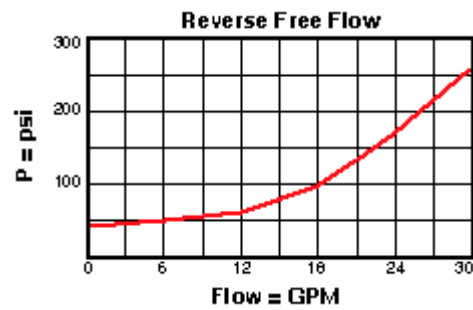
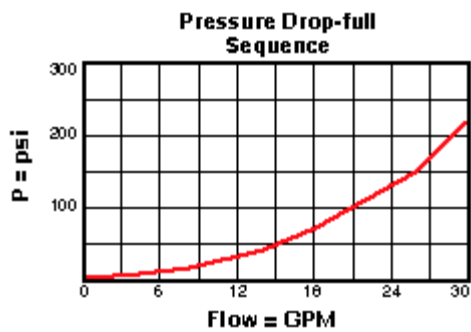
Technical Features

- All 3 port sequence cartridges are physically and functionally interchangeable (i.e. same flow path, same cavity for a given frame size).
- Although this is a zero pilot flow valve, port 3 (drain) must be connected to maintain a pressure reference in the control chamber. If port 3 is blocked, reciprocating seal weepage will cause the valve to malfunction.
- Pressure at port 3 is directly additive to the valve setting at a 1:1 ratio and should not exceed 5000 psi (350 bar).
- Suitable for use in load holding applications.
- Incorporates the Sun floating style construction to minimize the possibility of internal parts binding due to excessive installation torque and/or cavity/cartridge machining variations.

Technical Data

	U.S. Units	Metric Units
Cavity		T-2A
Capacity	30 gpm	120 L/min.
Adjustment - Number of Clockwise Turns to Increase Setting		5

Factory Pressure Settings Established at	2 in ³ /min.	30 cc/min.
Maximum Operating Pressure	5000 psi	350 bar
Maximum Valve Leakage at Reseat	10 drops/min.	0,7 cc/min.
Response Time - Typical	2 ms	
Reverse Flow Check Cracking Pressure	25 psi	1,7 bar
Series (from Cavity)	Series 2	
U.S. Patent #	4,834,135	
Valve Hex Size	1 1/8 in.	28,6 mm
Valve Installation Torque	45 - 50 lbf ft	60 - 70 Nm
Adjustment Screw Internal Hex Size	5/32 in.	4 mm
Adjustment Nut Hex Size	9/16 in.	15 mm
Adjustment Nut Torque	108 lbf in.	12 Nm
Model Weight	0.81 lb.	0.37 kg.
Seal Kits - Cartridge	Buna: 990-202-007	
Seal Kits - Cartridge	Viton: 990-202-006	



SCEA-LAN

Control	Adjustment Range	External Material/Seal Material
L Standard Screw Adjustment	500 - 3000 psi (35 - A 210 bar), 1000 psi (70 bar) Standard Setting	+0.00 N Buna-N +0.00

K Handknob +5.00

Customer specified setting stamped on hex \$1.10

- Explanation of Sun cartridge control options - US units.
- Explanation of Sun cartridge control options - metric units.

Special Notes

- No Special Notes Available for selected model.

| | | | | |

Copyright © 2008-2009 Sun Hydraulics Corporation. All rights reserved.
Terms and Conditions - ISO Certification - Statement of Privacy