

Ventable, pilot operated, balanced piston relief valve

Functional Group:

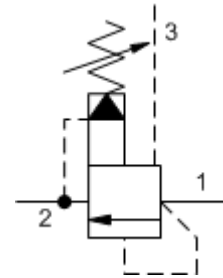
Products : Cartridges : Relief : 3 Port : Pilot Operated, Balanced Piston, Ventable

Capacity:
60 gpm (240
L/min.)

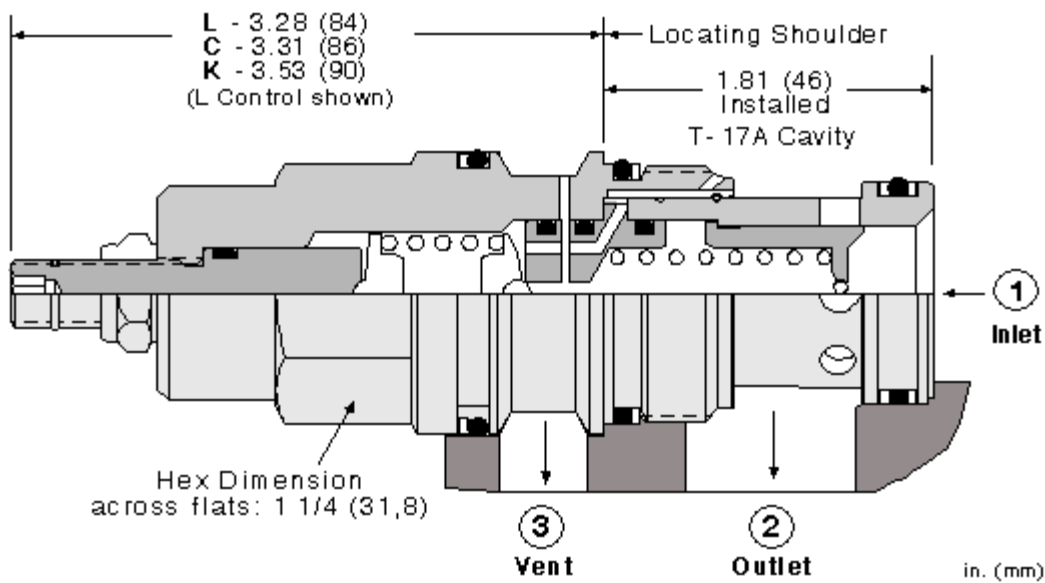
Model:
RVGA-LAN

Product Description

Ventable, pilot-operated, balanced piston relief cartridges are normally closed pressure regulating valves. When the pressure at the inlet (port 1) reaches the valve setting, the valve starts to open to tank (port 2), throttling flow to regulate the pressure. They provide a vent port (port 3) that connects between the main piston and pilot stage to provide for remote control by other pilot or 2-way valves. These valves are accurate, have low pressure rise vs. flow, they are smooth and quiet, and are moderately fast.



Download



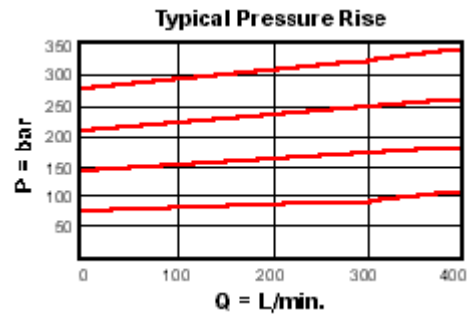
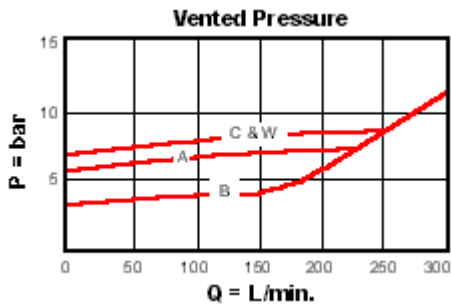
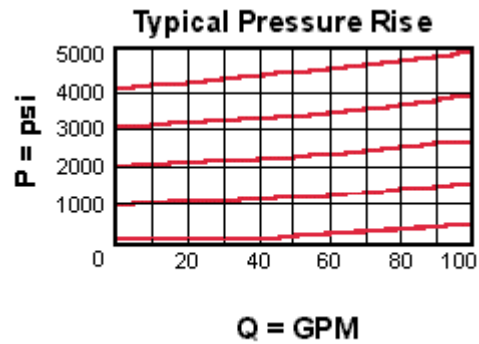
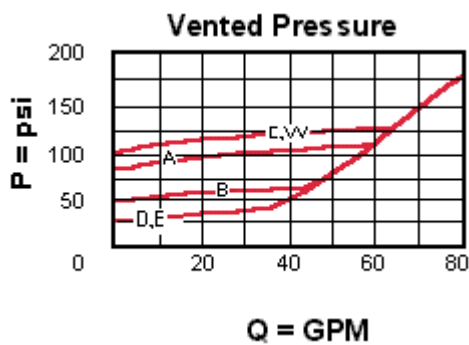
Technical Features

- A remote pilot relief on port 3 (vent) will control the valve below its own setting.
- Main stage orifice is protected by a 150 micron stainless steel screen.
- Back pressure on the tank port (port 2) is directly additive to the valve setting at a 1:1 ratio.
- Will accept maximum pressure at port 2; suitable for use in cross port relief circuits. If used in cross port relief circuits, consider spool leakage.
- Not suitable for use in load holding applications due to spool leakage.
- Incorporates the Sun floating style construction to minimize the possibility of internal parts binding due to excessive installation torque and/or cavity/cartridge machining variations.

Technical Data

	U.S. Units	Metric Units

Model Weight	1.35 lb.	0.61 kg.
Cavity	T-17A	
Capacity	60 gpm	240 L/min.
Adjustment - Number of Clockwise Turns to Increase Setting	5	
Control Pilot Flow	15 - 20 in ³ /min.	0,25 - 0,33 L/min.
Factory Pressure Settings Established at	4 gpm	15 L/min.
Maximum Operating Pressure	5000 psi	350 bar
Maximum Valve Leakage at 110 SUS (24 cSt)	4 in ³ /min.@1000 psi	65 cc/min.@70 bar
Response Time - Typical	10 ms	
Series (from Cavity)	Series 3	
Valve Hex Size	1 1/4 in.	31,8 mm
Valve Installation Torque	150 - 160 lbf ft	200 - 215 Nm
Adjustment Screw Hex Socket Size	5/32 in.	4 mm
Adjustment Nut Hex Size	9/16 in.	15 mm
Adjustment Nut Torque	108 lbf in.	12 Nm
Seal Kits	Buna: 990-017-007	
Seal Kits	Viton: 990-017-006	



RVGA-LAN

Control

Adjustment Range

External Material/Seal
Material

L Standard Screw
Adjustment

+0.00 100 - 3000 psi (7 - 210
A bar), 1000 psi (70 bar) +0.00 N Buna-N +0.00
Standard Setting

Customer specified setting stamped on hex \$1.10

- Explanation of Sun cartridge control options - US units.
- Explanation of Sun cartridge control options - metric units.

Copyright © 2007-2008 Sun Hydraulics Corporation. All rights reserved.
Terms and Conditions - ISO Certification - Statement of Privacy