

Ventable, pilot operated, balanced piston relief valve

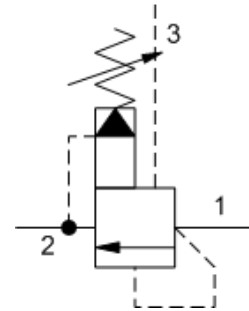
Capacity:
30 gpm (120 L/min.)

Functional Group:

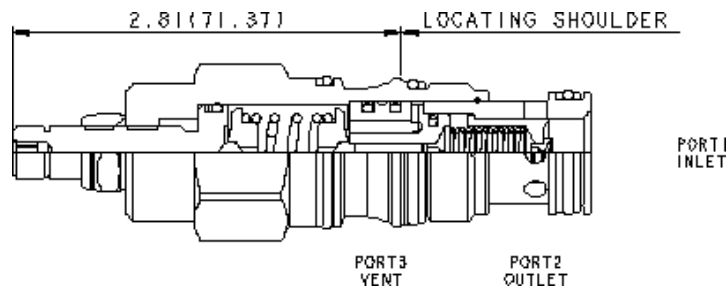
Products : Cartridges : Relief : 3 Port : Pilot Operated, Balanced Piston, Ventable

Product Description

Ventable, pilot-operated, balanced piston relief cartridges are normally closed pressure regulating valves. When the pressure at the inlet (port 1) reaches the valve setting, the valve starts to open to tank (port 2), throttling flow to regulate the pressure. They provide a vent port (port 3) that connects between the main piston and pilot stage to provide for remote control by other pilot or 2-way valves. These valves are accurate, have low pressure rise vs. flow, they are smooth and quiet, and are moderately fast.



[Download](#)



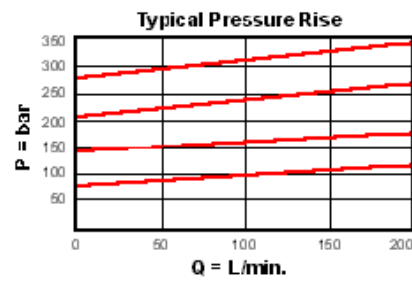
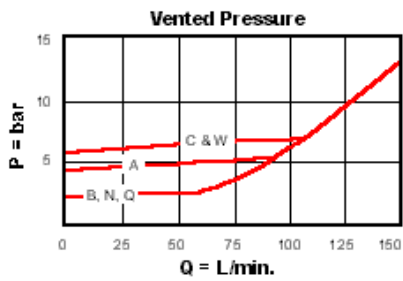
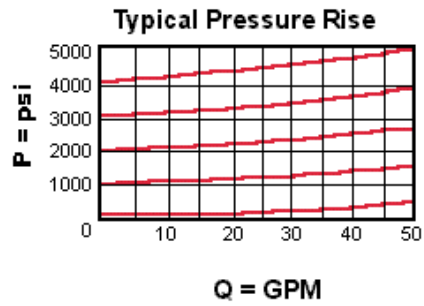
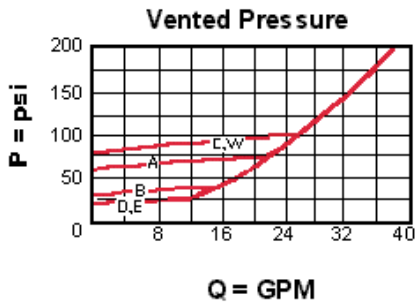
Technical Features

- A remote pilot relief on port 3 (vent) will control the valve below its own setting.
- Will accept maximum pressure at port 2; suitable for use in cross port relief circuits. If used in cross port relief circuits, consider spool leakage.
- Main stage orifice is protected by a 150 micron stainless steel screen.
- Not suitable for use in load holding applications due to spool leakage.
- Back pressure on the tank port (port 2) is directly additive to the valve setting at a 1:1 ratio.
- Incorporates the Sun floating style construction to minimize the possibility of internal parts binding due to excessive installation torque and/or cavity/cartridge machining variations.

Technical Data

	U.S. Units	Metric Units
Cavity	T-2A	
Capacity	30 gpm	120 L/min.
Adjustment - Number of Clockwise Turns to Increase Setting	5	
Control Pilot Flow	10 - 15 in ³ /min.	0,16 - 0,25 L/min.
Factory Pressure Settings Established at	4 gpm	15 L/min.
Maximum Operating Pressure	5000 psi	350 bar
Maximum Valve Leakage at 110 SUS (24 cSt)	3 in ³ /min. @1000 psi	50 cc/min. @70 bar
Response Time - Typical	10 ms	
Series (from Cavity)	Series 2	
Valve Hex Size	1 1/8 in.	28,6 mm
Valve Installation Torque	45 - 50 lbf ft	60 - 70 Nm
Adjustment Screw Internal Hex Size	5/32 in.	4 mm

Adjustment Locknut Hex Size	9/16 in.	15 mm
Adjustment Nut Torque	108 lbf in.	12 Nm
Seal Kits - Cartridge	Buna: 990-202-007	
Seal Kits - Cartridge	Viton: 990-202-006	
Model Weight	0.63 lb.	0.29 kg.



RVEA-LDN

Control	Adjustment Range	External Material/Seal Material
L Standard Screw Adjustment	D 25 - 800 psi (1,7 - 55 bar), 400 psi (28 bar) Standard Setting	+1.00 N Buna-N +0.00
M Capped Screw Adjustment with Lockwire Holes	+1.00	F 75 - 6000 psi (5 - 420 bar), 1000 psi (70 bar) Standard Setting +2.00
Q* Capped and Lockwired	+4.00	G 60 - 3000 psi (4 - 210 bar), 1000 psi (70 bar) Standard Setting +2.00
		H 30 - 3000 psi (2 - 210 bar), 1000 psi (70 bar) Standard Setting +2.00
		I 15 - 1500 psi (1 - 105 bar), 1000 psi (70 bar) Standard Setting +1.00
		J 25 - 1500 psi (1,7 - 105 bar), 1000 psi (70 bar) Standard Setting +2.00
		K 75 - 1500 psi (5 - 105 bar), 1000 psi (70 bar) Standard Setting +1.00
		L 15 - 800 psi (1 - 55 bar), 400 +1.00

	psi (28 bar) Standard Setting	
M	40 - 800 psi (2,8 - 55 bar), 400 psi (28 bar) Standard Setting	+1.00
N	60 - 800 psi (4 - 55 bar), 400 psi (28 bar) Standard Setting	+1.00
O	15 - 400 psi (1 - 28 bar), 200 psi (14 bar) Standard Setting	+3.00
P	40 - 400 psi (2,8 - 28 bar), 200 psi (14 bar) Standard Setting	+1.00
Q	60 - 400 psi (4 - 28 bar), 200 psi (14 bar) Standard Setting	+1.00
R	15 - 200 psi (1 - 14 bar), 100 psi (7 bar) Standard Setting	+2.00
S	25 - 200 psi (1,7 - 14 bar), 100 psi (7 bar) Standard Setting	+2.00
T	40 - 200 psi (2,8 - 14 bar), 100 psi (7 bar) Standard Setting	+2.00
U	60 - 200 psi (4 - 14 bar), 100 psi (7 bar) Standard Setting	+2.00
V	150 - 800 psi (10,5 - 55 bar), 400 psi (28 bar) Standard Setting	+2.00
Y	30 - 4500 psi (2 - 315 bar), 1000 psi (70 bar) Standard Setting	+2.00

Customer specified setting stamped on hex \$1.10

Related Documents (opens in new window):

- [Explanation of Sun cartridge control options - US units.](#)
- [Explanation of Sun cartridge control options - metric units.](#)

Special Notes

- No Special Notes Available for selected model.