

Ventable, pilot operated, balanced piston relief valve

Functional Group:

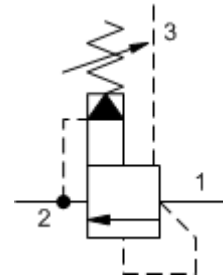
Products : Cartridges : Relief : 3 Port : Pilot Operated, Balanced Piston, Ventable

Capacity:
30 gpm (120
L/min.)

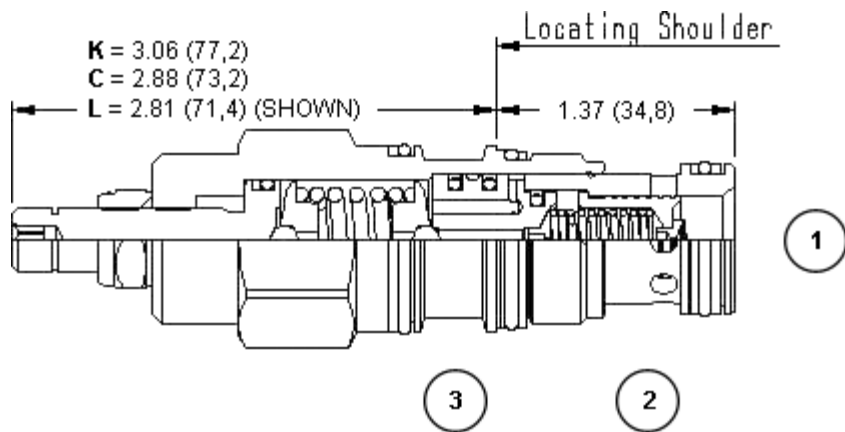
Model:
RVEA-LCV

Product Description

Ventable, pilot-operated, balanced piston relief cartridges are normally closed pressure regulating valves. When the pressure at the inlet (port 1) reaches the valve setting, the valve starts to open to tank (port 2), throttling flow to regulate the pressure. They provide a vent port (port 3) that connects between the main piston and pilot stage to provide for remote control by other pilot or 2-way valves. These valves are accurate, have low pressure rise vs. flow, they are smooth and quiet, and are moderately fast.



Download



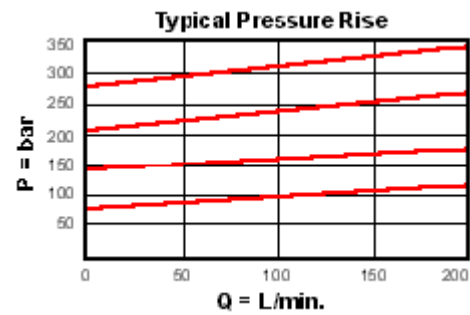
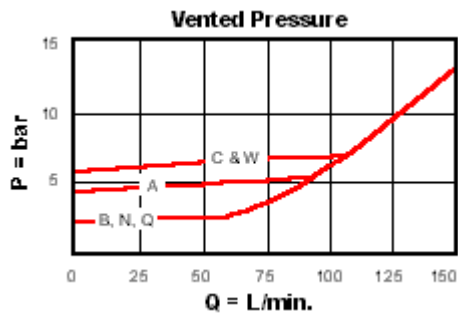
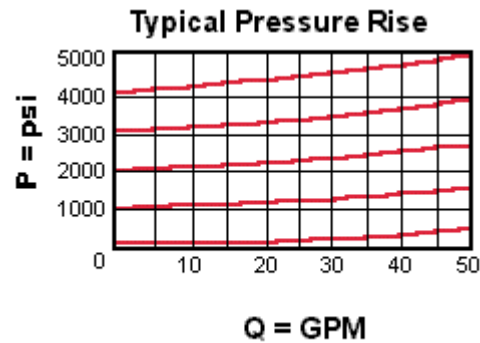
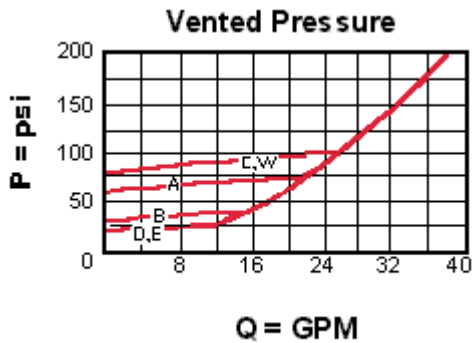
Technical Features

- A remote pilot relief on port 3 (vent) will control the valve below its own setting.
- Will accept maximum pressure at port 2; suitable for use in cross port relief circuits. If used in cross port relief circuits, consider spool leakage.
- Main stage orifice is protected by a 150 micron stainless steel screen.
- Not suitable for use in load holding applications due to spool leakage.
- Back pressure on the tank port (port 2) is directly additive to the valve setting at a 1:1 ratio.
- Incorporates the Sun floating style construction to minimize the possibility of internal parts binding due to excessive installation torque and/or cavity/cartridge machining variations.

Technical Data

	U.S. Units	Metric Units
Cavity		T-2A
Capacity	30 gpm	120 L/min.
Adjustment - Number of Clockwise Turns to Increase Setting		5

Control Pilot Flow	10 - 15 in ³ /min.	0,16 - 0,25 L/min.
Factory Pressure Settings Established at	4 gpm	15 L/min.
Maximum Operating Pressure	5000 psi	350 bar
Maximum Valve Leakage at 110 SUS (24 cSt)	3 in ³ /min.@1000 psi	50 cc/min.@70 bar
Response Time - Typical	10 ms	
Series (from Cavity)	Series 2	
Valve Hex Size	1 1/8 in.	28,6 mm
Valve Installation Torque	45 - 50 lbf ft	60 - 70 Nm
Adjustment Screw Internal Hex Size	5/32 in.	4 mm
Adjustment Nut Hex Size	9/16 in.	15 mm
Adjustment Nut Torque	108 lbf in.	12 Nm
Model Weight	0.64 lb.	0.29 kg.
Seal Kits - Cartridge	Buna: 990-202-007	
Seal Kits - Cartridge	Viton: 990-202-006	



RVEA-LCV

Control

Adjustment Range

External Material/Seal Material

L Standard Screw Adjustment

150 - 6000 psi (10,5 - 420 bar), 1000 psi (70 bar) Standard Setting

+2.00

V Viton +5.00

Customer specified setting stamped on hex \$1.10

- Explanation of Sun cartridge control options - US units.
- Explanation of Sun cartridge control options - metric units.



Copyright © 2007-2008 Sun Hydraulics Corporation. All rights reserved.
Terms and Conditions - ISO Certification - Statement of Privacy