

## Pilot operated, balanced piston sequence valve

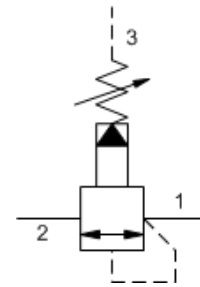
Capacity:  
60 gpm (240 L/min.)

Functional Group:  
Products : Cartridges : Sequence : 3 Port : Pilot Operated, Balanced Piston

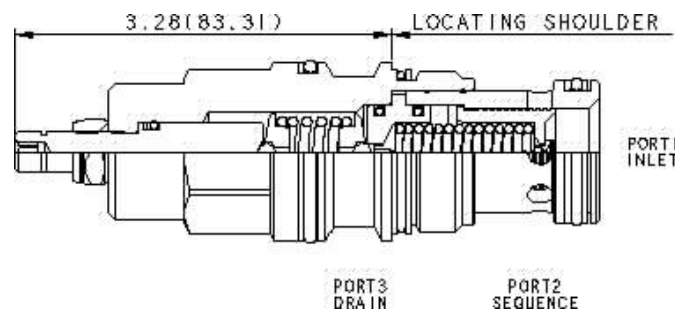
Model:  
RSHC-LAV

### Product Description

Pilot-operated, balanced piston sequence valves will supply a secondary circuit with flow once the pressure at the inlet (port 1) has exceeded the valve setting. The pressure setting of a sequence valve controls the pressure at port 1 relative to the pressure at the drain (port 3). These valves are insensitive to back pressure at port 2 (sequence), up to the valve setting. They may be used to regulate pressure in place of 2-port relief valves if there is pressure in the return line.



[Download](#)



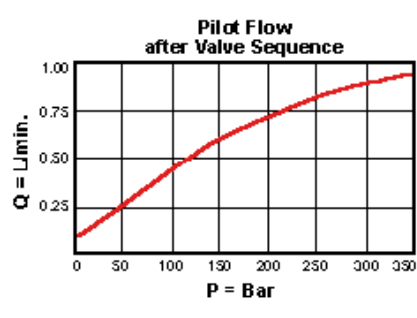
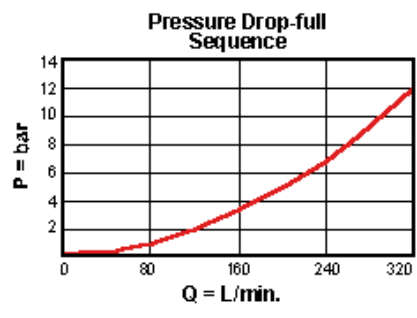
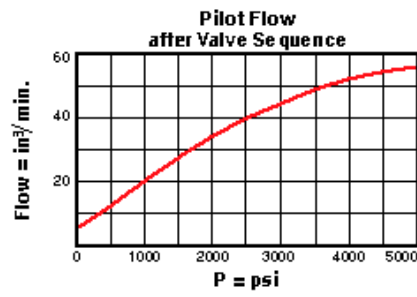
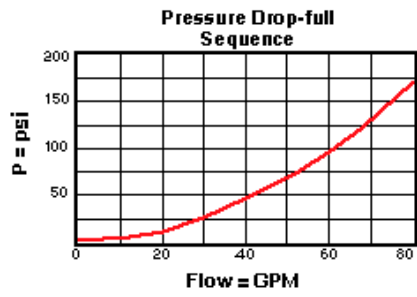
### Technical Features

- Pilot flow continues to increase as the pressure at port 1 (inlet), relative to the pressure at port 3 (drain), rises above the valve setting.
- The main stage orifice is protected by a 150 micron stainless steel screen.
- Pressure at port 3 is directly additive to the valve setting at a 1:1 ratio and should not exceed 5000 psi (350 bar).
- Not suitable for use in load holding applications due to spool leakage.
- All 3 port sequence cartridges are physically and functionally interchangeable (i.e. same flow path, same cavity for a given frame size).
- Incorporates the Sun floating style construction to minimize the possibility of internal parts binding due to excessive installation torque and/or cavity/cartridge machining variations.

### Technical Data

	U.S. Units	Metric Units
Cavity		T-17A
Capacity	60 gpm	240 L/min.
Adjustment - Number of Clockwise Turns to Increase Setting		5
Factory Pressure Settings Established at	4 gpm	15 L/min.
Maximum Operating Pressure	5000 psi	350 bar
Maximum Valve Leakage at 110 SUS (24 cSt)	4 in <sup>3</sup> /min. @1000 psi	65 cc/min. @70 bar
Response Time - Typical		10 ms
Series (from Cavity)		Series 3
Valve Hex Size	1 1/4 in.	31,8 mm
Valve Installation Torque	150 - 160 lbf ft	200 - 215 Nm
Adjustment Screw Internal Hex Size	5/32 in.	4 mm
Adjustment Locknut Hex Size	9/16 in.	15 mm

Adjustment Nut Torque	108 lbf in.	12 Nm
Seal Kits - Cartridge	Buna: 990-017-007	
Seal Kits - Cartridge	Viton: 990-017-006	
Model Weight	1.36 lb.	0.62 kg.



### RSHC-LAV

Control                      Adjustment Range                      External Material/Seal Material

L Standard Screw Adjustment                      A 100 - 3000 psi (7 - 210 bar), 1000 psi (70 bar) Standard Setting                      +0.00                      V Viton                      +5.00

Q\* Capped and Lockwired                      +4.00

Customer specified setting stamped on hex \$1.10

Related Models  
RSHCB

Related Documents (opens in new window):  

- [Explanation of Sun cartridge control options - US units.](#)
- [Explanation of Sun cartridge control options - metric units.](#)

Special Notes

- No Special Notes Available for selected model.



