

Pilot operated, balanced piston sequence valve

Capacity:
60 gpm (240 L/min.)

Functional Group:

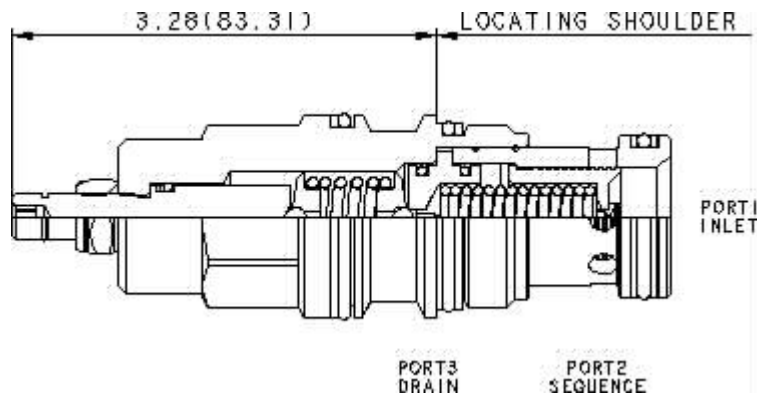
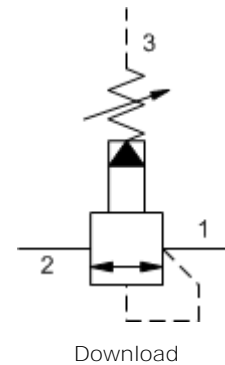
Products : Cartridges : Sequence : 3 Port : Pilot Operated, Balanced Piston

Model:

RSHC-LAN

Product Description

Pilot-operated, balanced piston sequence valves will supply a secondary circuit with flow once the pressure at the inlet (port 1) has exceeded the valve setting. The pressure setting of a sequence valve controls the pressure at port 1 relative to the pressure at the drain (port 3). These valves are insensitive to back pressure at port 2 (sequence), up to the valve setting. They may be used to regulate pressure in place of 2-port relief valves if there is pressure in the return line.



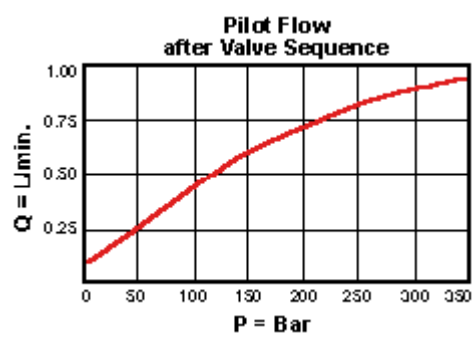
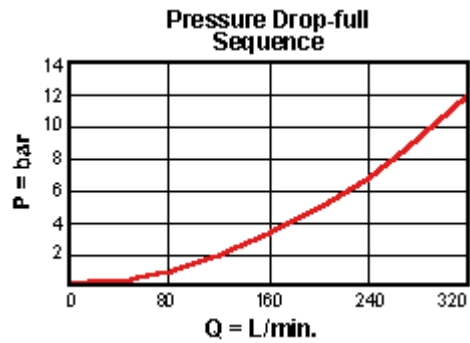
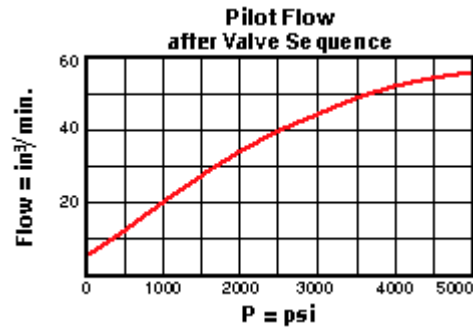
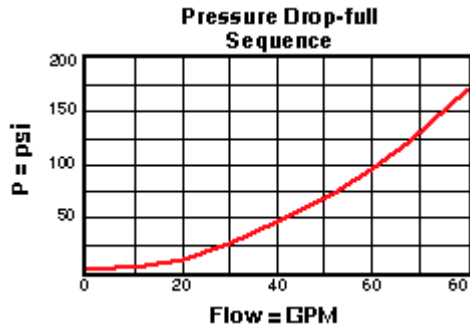
Technical Features

- Pilot flow continues to increase as the pressure at port 1 (inlet), relative to the pressure at port 3 (drain), rises above the valve setting.
- The main stage orifice is protected by a 150 micron stainless steel screen.
- Pressure at port 3 is directly additive to the valve setting at a 1:1 ratio and should not exceed 5000 psi (350 bar).
- Not suitable for use in load holding applications due to spool leakage.
- All 3 port sequence cartridges are physically and functionally interchangeable (i.e. same flow path, same cavity for a given frame size).
- Incorporates the Sun floating style construction to minimize the possibility of internal parts binding due to excessive installation torque and/or cavity/cartridge machining variations.

Technical Data

	U.S. Units	Metric Units
Model Weight	1.35 lb.	0.61 kg.
Cavity	T-17A	
Capacity	60 gpm	240 L/min.
Adjustment - Number of Clockwise Turns to Increase Setting	5	
Factory Pressure Settings Established at	4 gpm	15 L/min.
Maximum Operating Pressure	5000 psi	350 bar

Maximum Valve Leakage at 110 SUS (24 cSt)	4 in ³ /min.@1000 psi 65 cc/min.@70 bar	
Response Time - Typical	10 ms	
Series (from Cavity)	Series 3	
Valve Hex Size	1 1/4 in.	31,8 mm
Valve Installation Torque	150 - 160 lbf ft	200 - 215 Nm
Adjustment Screw Hex Socket Size	5/32 in.	4 mm
Adjustment Nut Hex Size	9/16 in.	15 mm
Adjustment Nut Torque	108 lbf in.	12 Nm
Seal Kits	Buna: 990-017-007	
Seal Kits	Viton: 990-017-006	



RSHC-LAN

Control

Adjustment Range

External Material/Seal Material

L Standard Screw Adjustment

+0.00 100 - 3000 psi (7 - 210 A bar), 1000 psi (70 bar) Standard Setting

+0.00 N Buna-N +0.00

* Special Setting required, specify at time of order
Customer specified setting stamped on hex \$1.10

Related Models
RSHC8

- Explanation of Sun cartridge control options - US units.
- Explanation of Sun cartridge control options - metric units.

