

Pilot operated, balanced piston sequence valve

Capacity:
15 gpm (60 L/min.)

Functional Group:

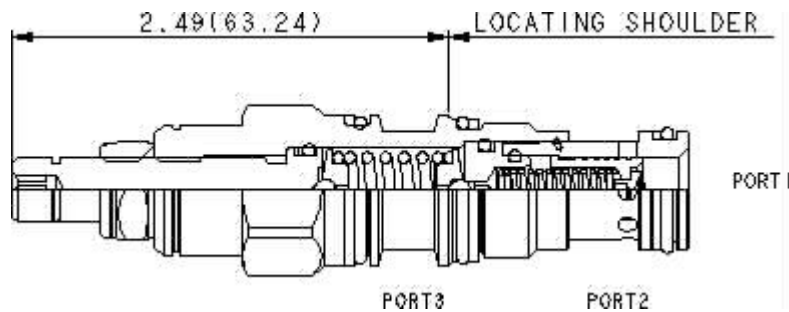
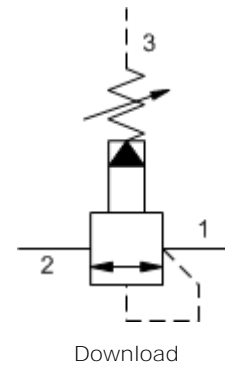
Products : Cartridges : Sequence : 3 Port : Pilot Operated, Balanced Piston

Model:

RSDC-LAN

Product Description

Pilot-operated, balanced piston sequence valves will supply a secondary circuit with flow once the pressure at the inlet (port 1) has exceeded the valve setting. The pressure setting of a sequence valve controls the pressure at port 1 relative to the pressure at the drain (port 3). These valves are insensitive to back pressure at port 2 (sequence), up to the valve setting. They may be used to regulate pressure in place of 2-port relief valves if there is pressure in the return line.



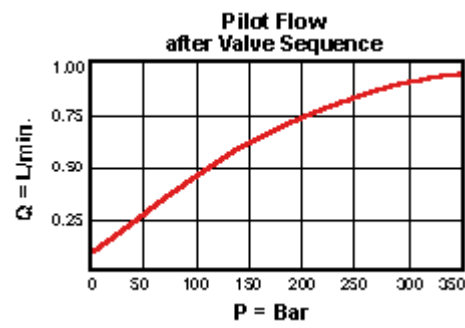
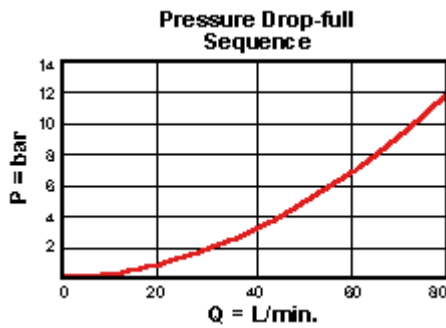
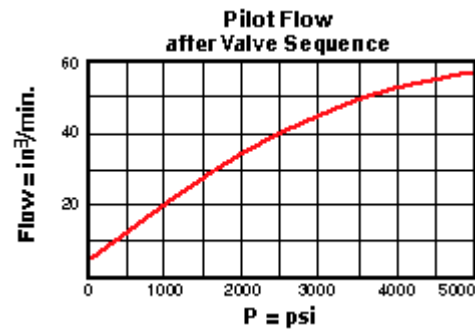
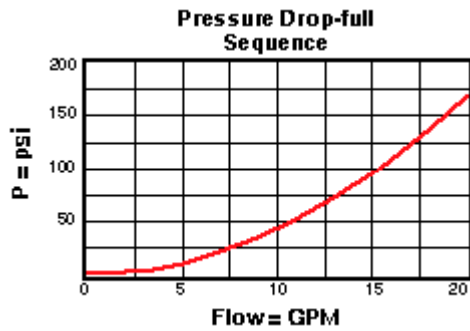
Technical Features

- Pilot flow continues to increase as the pressure at port 1 (inlet), relative to the pressure at port 3 (drain), rises above the valve setting.
- Pressure at port 3 is directly additive to the valve setting at a 1:1 ratio and should not exceed 5000 psi (350 bar).
- All 3 port sequence cartridges are physically and functionally interchangeable (i.e. same flow path, same cavity for a given frame size).
- Incorporates the Sun floating style construction to minimize the possibility of internal parts binding due to excessive installation torque and/or cavity/cartridge machining variations.
- The main stage orifice is protected by a 150 micron stainless steel screen.
- Not suitable for use in load holding applications due to spool leakage.
- Stainless steel cartridge options P or W are intended for use within corrosive environments with all external components manufactured in stainless steel or titanium. Internal working components remain the same as the standard valves.

Technical Data

	U.S. Units	Metric Units
Model Weight	0.34 lb.	0.15 kg.
Cavity	T-11A	
Capacity	15 gpm	60 L/min.

Adjustment - Number of Clockwise Turns to Increase Setting	5	
Factory Pressure Settings Established at	4 gpm	15 L/min.
Maximum Operating Pressure	5000 psi	350 bar
Maximum Valve Leakage at 110 SUS (24 cSt)	2 in ³ /min.@1000 psi	30 cc/min.@70 bar
Response Time - Typical	10 ms	
Series (from Cavity)	Series 1	
Valve Hex Size	7/8 in.	22,2 mm
Valve Installation Torque	30 - 35 lbf ft	45 - 50 Nm
Adjustment Screw Hex Socket Size	5/32 in.	4 mm
Adjustment Nut Hex Size	9/16 in.	15 mm
Adjustment Nut Torque	108 lbf in.	12 Nm
Seal Kits	Buna: 990-011-007	
Seal Kits	Viton: 990-011-006	



RSDC-LAN

Control

Adjustment Range

External Material/Seal Material

L Standard Screw Adjustment +0.00 100 - 3000 psi (7 - 210 A bar), 1000 psi (70 bar) Standard Setting +0.00 N Buna-N +0.00

If the material/seal is P, the control must be L or C
 If the material/seal is W, the control must be L or C

* Special Setting required, specify at time of order

Customer specified setting stamped on hex \$1.10

Related Models

RSDC8

Copyright © 2007-2008 Sun Hydraulics Corporation. All rights reserved.
Terms and Conditions - ISO Certification - Statement of Privacy