

## Pilot operated, balanced piston sequence valve

Capacity:  
15 gpm (60 L/min.)

Functional Group:

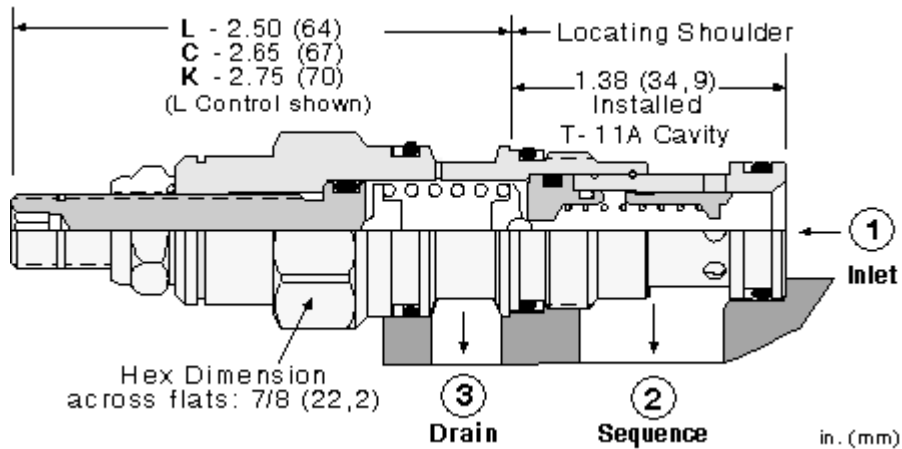
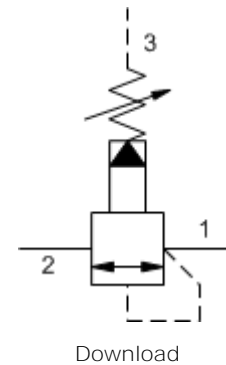
Products : Cartridges : Sequence : 3 Port : Pilot Operated, Balanced Piston

Model:

RSDC-FBN

### Product Description

Pilot-operated, balanced piston sequence valves will supply a secondary circuit with flow once the pressure at the inlet (port 1) has exceeded the valve setting. The pressure setting of a sequence valve controls the pressure at port 1 relative to the pressure at the drain (port 3). These valves are insensitive to back pressure at port 2 (sequence), up to the valve setting. They may be used to regulate pressure in place of 2-port relief valves if there is pressure in the return line.

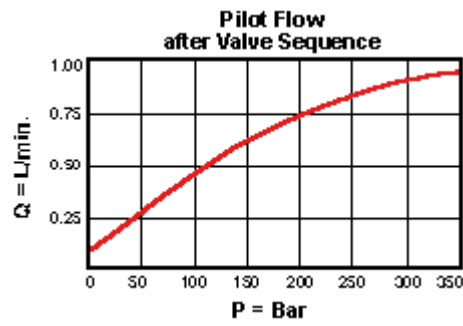
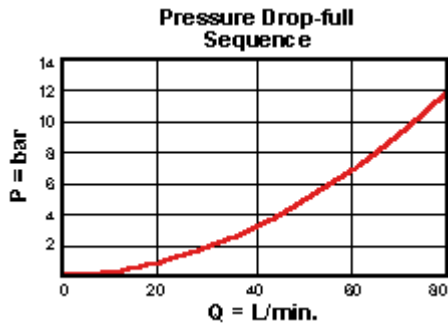
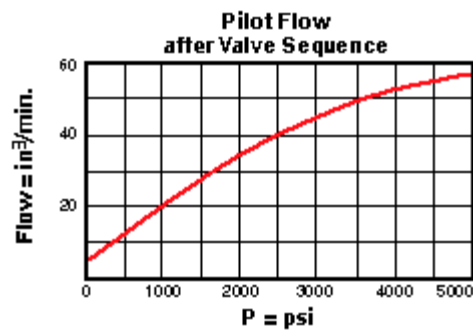
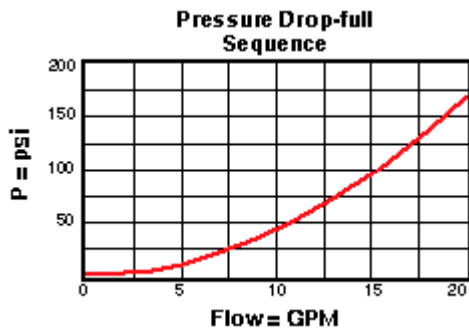


### Technical Features

- Pilot flow continues to increase as the pressure at port 1 (inlet), relative to the pressure at port 3 (drain), rises above the valve setting.
- Pressure at port 3 is directly additive to the valve setting at a 1:1 ratio and should not exceed 5000 psi (350 bar).
- All 3 port sequence cartridges are physically and functionally interchangeable (i.e. same flow path, same cavity for a given frame size).
- Incorporates the Sun floating style construction to minimize the possibility of internal parts binding due to excessive installation torque and/or cavity/cartridge machining variations.
- The main stage orifice is protected by a 150 micron stainless steel screen.
- Not suitable for use in load holding applications due to spool leakage.
- Stainless steel cartridge options P or W are intended for use within corrosive environments with all external components manufactured in stainless steel or titanium. Internal working components remain the same as the standard valves.

### Technical Data

	U.S. Units	Metric Units
Model Weight	0.29 lb.	0.13 kg.
Cavity	T-11A	
Capacity	15 gpm	60 L/min.
Adjustment - Number of Clockwise Turns to Increase Setting	5	
Factory Pressure Settings Established at	4 gpm	15 L/min.
Maximum Operating Pressure	5000 psi	350 bar
Maximum Valve Leakage at 110 SUS (24 cSt)	2 in <sup>3</sup> /min.@1000 psi	30 cc/min.@70 bar
Response Time - Typical	10 ms	
Series (from Cavity)	Series 1	
Valve Hex Size	7/8 in.	22,2 mm
Valve Installation Torque	30 - 35 lbf ft	45 - 50 Nm
Adjustment Screw Hex Socket Size	5/32 in.	4 mm
Adjustment Nut Hex Size	9/16 in.	15 mm
Adjustment Nut Torque	108 lbf in.	12 Nm
Seal Kits	Buna: 990-011-007	
Seal Kits	Viton: 990-011-006	



## RSDC-FBN

Control

Adjustment Range

External Material/Seal Material

F Hex Head Screw with Locknut

-  
4.00

50 - 1500 psi (3,5 -  
B 105 bar), 1000 psi (70  
bar) Standard Setting

+0.00

N Buna-N +0.00

If the material/seal is P, the control must be L or C  
If the material/seal is W, the control must be L or C

\* Special Setting required, specify at time of order  
Customer specified setting stamped on hex \$1.10

Related Models  
RSDC8

Copyright © 2007-2008 Sun Hydraulics Corporation. All rights reserved.  
Terms and Conditions - ISO Certification - Statement of Privacy