

Direct-acting relief valve - pilot capacity

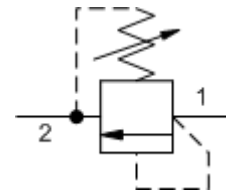
Capacity:
.25 gpm (1 L/min.)

Functional Group:
Products : Cartridges : Pilot Control - relief : 2 port : Pilot relief

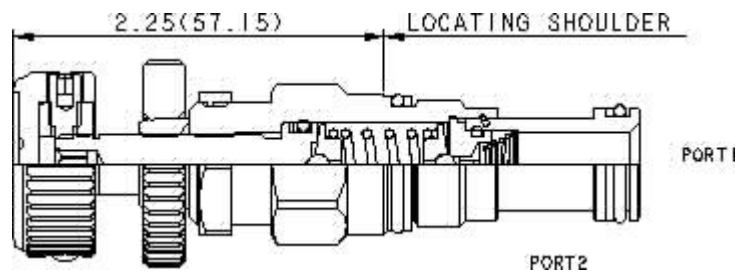
Model:
RBAC-OBN

Product Description

Direct-acting, pilot relief cartridges are used to remotely control the pressure setting of other pilot-operated valves. Because capacity is limited to pilot flow, these valves should be used with other valves with comparable pilot flows.



Download

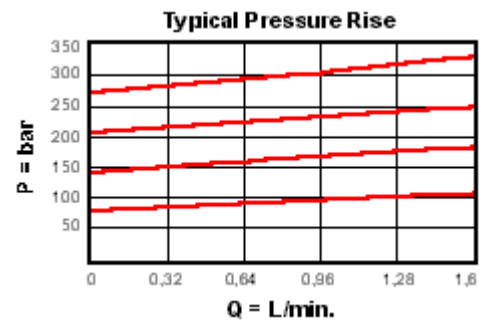
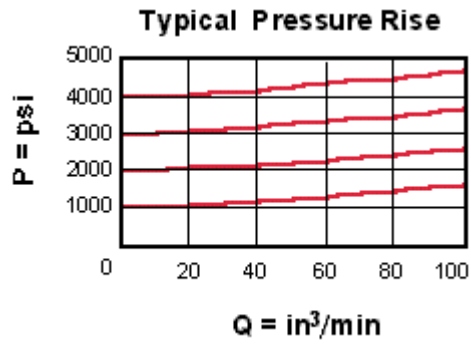


Technical Features

- Main stage orifice is protected by a 150 micron stainless steel screen.
- Back pressure on the tank port (port 2) is directly additive to the valve setting at a 1:1 ratio.
- Incorporates the Sun floating style construction to minimize the possibility of internal parts binding due to excessive installation torque and/or cavity/cartridge machining variations.
- Suitable for use in load holding applications.
- Stainless steel cartridge options P or W are intended for use within corrosive environments with all external components manufactured in stainless steel or titanium. Internal working components remain the same as the standard valves.

Technical Data

	U.S. Units	Metric Units
Model Weight	0.38 lb.	0.17 kg.
Cavity	T-10A	
Capacity	.25 gpm	1 L/min.
Adjustment - Number of Clockwise Turns to Increase Setting	5	
Maximum Operating Pressure	5000 psi	350 bar
Maximum Valve Leakage at 110 SUS (24 cSt)	5 drops/min.	0,4 cc/min.
Response Time - Typical	2 ms	
Series (from Cavity)	Series 1	
Valve Hex Size	7/8 in.	22,2 mm
Valve Installation Torque	30 - 35 lbf ft	45 - 50 Nm
Adjustment Screw Hex Socket Size	5/32 in.	4 mm
Adjustment Nut Hex Size	9/16 in.	15 mm



RBAC-OBN

Control

Adjustment Range

External Material/Seal
Material

○ Handknob with Panel Mount	+7.00	25 - 1500 psi (1,7 - B 105 bar), 1000 psi (70 bar) Standard Setting	+0.00	N Buna-N +0.00
-----------------------------	-------	---------------------------------------------------------------------	-------	----------------

If the material/seal is P, the control must be L or C
 If the material/seal is W, the control must be L or C

* Special Setting required, specify at time of order
 Customer specified setting stamped on hex \$1.10

- Explanation of Sun cartridge control options - US units.
- Explanation of Sun cartridge control options - metric units.

Copyright © 2007-2008 Sun Hydraulics Corporation. All rights reserved.
 Terms and Conditions - ISO Certification - Statement of Privacy