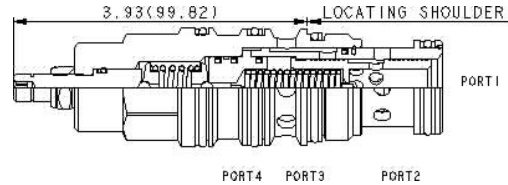
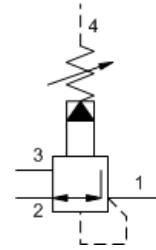


Model: PVHA-LBN
Capacity: 40 gpm (160 L/min.)
Pilot operated, pressure reducing/relieving valve with drain to port 4

Externally drained, pilot-operated pressure reducing/relieving valves reduce a high primary pressure at the inlet (port 2) to a constant reduced pressure at port 1, with a full-flow relief function from port 1 to tank (port 3). Draining the pilot section at port 4 makes these valves insensitive to pressure at tank (port 3) and provides a means for remote control by pilot or 2-way valves.



Technical Data		
	U.S. Units	Metric Units
Model Weight	1.53 lb.	0.69 kg.
Cavity	T-23A	
Capacity	40 gpm	160 L/min.
Adjustment - Number of Clockwise Turns to Increase Setting	5	
Control Pilot Flow	15 - 20 in ³ /min.	0,25 - 0,33 L/min.
Factory Pressure Settings Established at	blocked control port (dead headed)	
Maximum Operating Pressure	5000 psi	350 bar
Series (from Cavity)	3	
Valve Hex Size	1 1/4 in.	31,8 mm
Valve Installation Torque	150 - 160 lbf ft	200 - 215 Nm
Adjustment Screw Hex Socket Size	5/32 in.	4 mm
Adjustment Nut Hex Size	9/16 in.	15 mm
Adjustment Nut Torque	108 lbf in.	12 Nm
Seal Kits	Buna: 990-023-007	
Seal Kits	Viton: 990-023-006	

Selected Options
PVHA - LBN

Control	Adjustment Range	External Material/Seal Material
L Standard Screw Adjustment	B 50 - 1500 psi (3,5 - 105 bar), 200 psi (14 bar) Standard Setting	N Buna-N