

Ventable, pilot operated, pressure reducing/relieving valve

Functional Group:

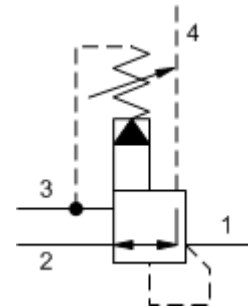
Products : Cartridges : Reducing/Relieving : 4 Port : Pilot Operated, Ventable

Capacity:
20 gpm (80
L/min.)

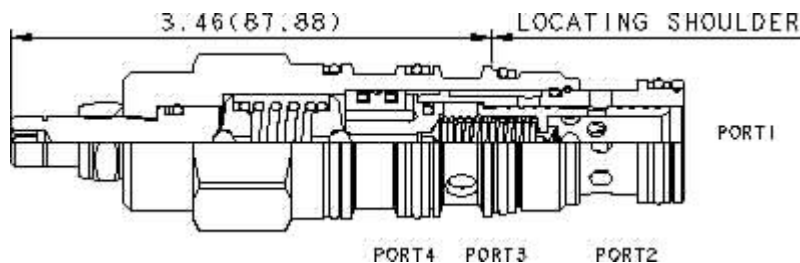
Model:
PVFB-LBN

Product Description

Ventable, pilot-operated pressure reducing/relieving valves reduce a high primary pressure at the inlet to a constant reduced pressure at port 1, with a full-flow relief function from port 1 to tank (port 3). The vent port (port 4) can be used as a means for remote control by pilot or 2-way valves.



Download



Technical Features

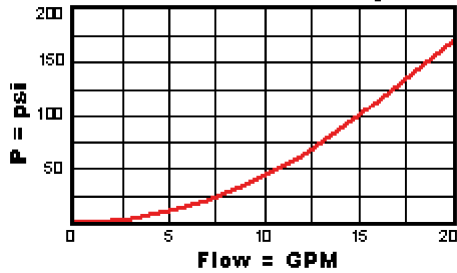
- Pressure at port 3 is directly additive to the valve setting at a 1:1 ratio and should not exceed 3000 psi (210 bar).
- Pilot operated valves exhibit very low dead-band transition between reducing and relieving modes.
- Pilot operated valves exhibit exceptionally flat pressure/flow characteristics, are very stable and have low hysteresis.
- Incorporates the Sun floating style construction to minimize the possibility of internal parts binding due to excessive installation torque and/or cavity/cartridge machining variations.
- Full reverse flow from reduced pressure (port 1) to inlet (port 2) may cause the main spool to close. If reverse free flow is required in the circuit, consider adding a separate check valve to the circuit.
- Recommended maximum inlet pressure is determined by the adjustment range. Ranges D, E, N, and Q are tested with a 2000 psi (140 bar) maximum differential between inlet and reduced pressure. Ranges A, B, and H are tested with a 3000 psi (200 bar) maximum differential between inlet and reduced pressure. Ranges C and W are tested with 5000 psi (350 bar) of inlet pressure.
- By controlling the pressure at the vent (port 4), the effective setting of the valve can be controlled below the nominal valve setting.

Technical Data

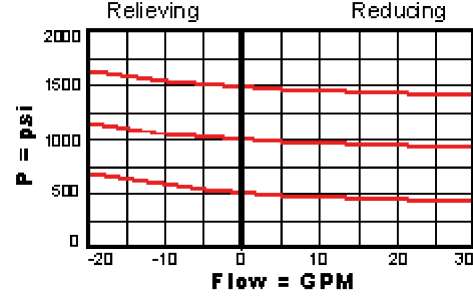
	U.S. Units	Metric Units
Model Weight	0.73 lb.	0.33 kg.
Cavity	T-22A	

Capacity	20 gpm	80 L/min.
Adjustment - Number of Clockwise Turns to Increase Setting	5	
Control Pilot Flow	10 - 15 in ³ /min.	0,16 - 0,25 L/min.
Factory Pressure Settings Established at	blocked control port (dead headed)	
Maximum Operating Pressure	5000 psi	350 bar
Series (from Cavity)	Series 2	
Valve Hex Size	1 1/8 in.	28,6 mm
Valve Installation Torque	45 - 50 lbf ft	60 - 70 Nm
Adjustment Screw Hex Socket Size	5/32 in.	4 mm
Adjustment Nut Hex Size	9/16 in.	15 mm
Adjustment Nut Torque	108 lbf in.	12 Nm
Seal Kits	Buna: 990-022-007	
Seal Kits	Viton: 990-022-006	

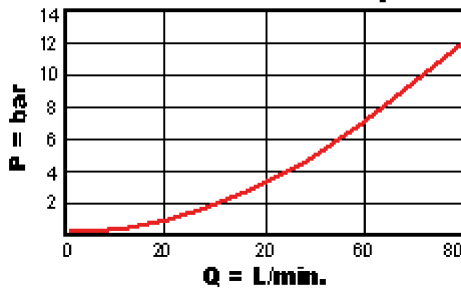
No Load Pressure Drop with Valve Full Open



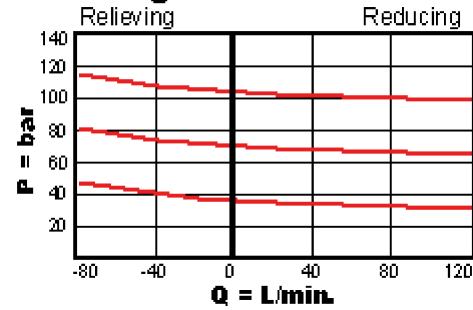
Regulated Pressure



No Load Pressure Drop with Valve Full Open



Regulated Pressure



PVFB-LBN

Control

Adjustment Range

External Material/Seal Material

L Standard Screw Adjustment

+0.00

50 - 1500 psi (3,5 - B 105 bar), 200 psi (14 bar) Standard Setting

+0.00

N Buna-N +0.00

Customer specified setting stamped on hex \$1.10

- Explanation of Sun cartridge control options - US units.
- Explanation of Sun cartridge control options - metric units.

Copyright © 2007-2008 Sun Hydraulics Corporation. All rights reserved.
Terms and Conditions - ISO Certification - Statement of Privacy