

Pilot operated, pressure reducing valve

Capacity:
10 gpm (40 L/min.)

Functional Group:

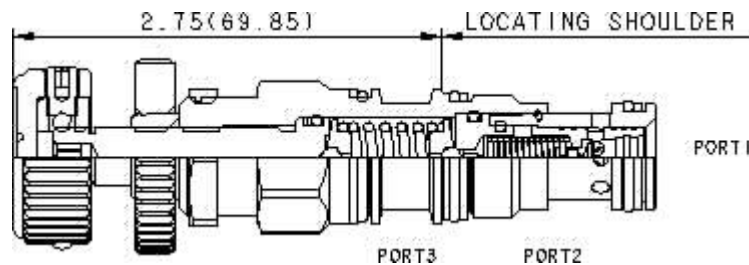
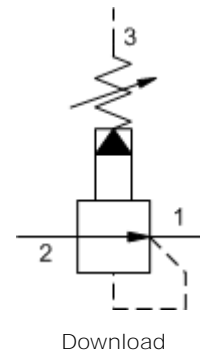
Products : Cartridges : Reducing : 3 Port : Pilot Operated Reducer

Model:

PBDB-OAN

Product Description

Pilot-operated, pressure reducing valves reduce a high primary pressure at the inlet (port 2) to a constant reduced pressure at port 1, allowing circuits with multiple pressure requirements to be operated using a single pump.



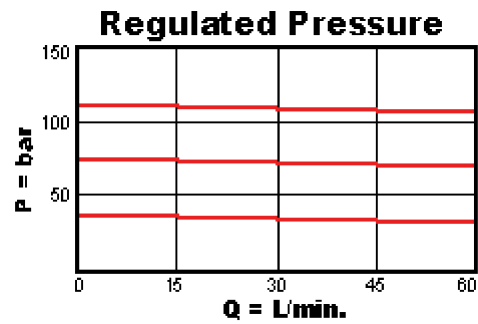
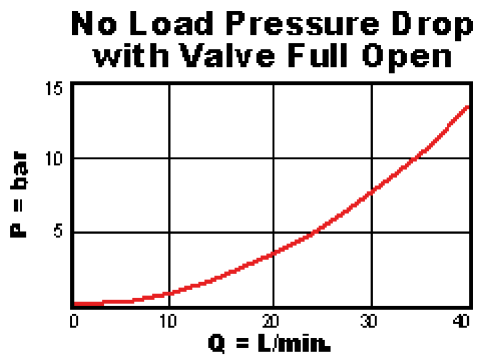
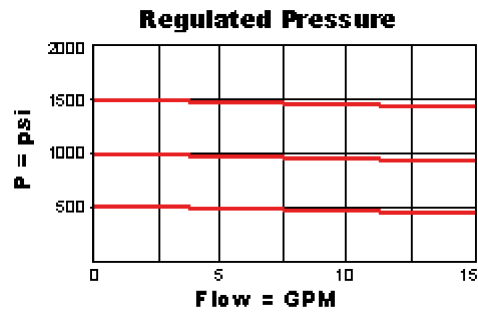
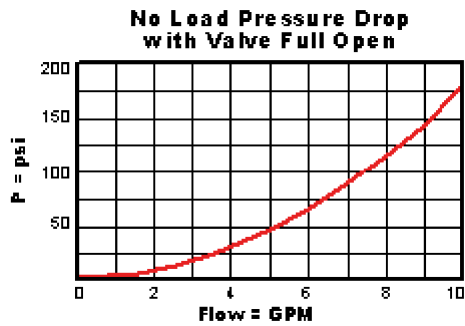
Technical Features

- Full reverse flow from reduced pressure (port 1) to inlet (port 2) may cause the main spool to close. If reverse free flow is required in the circuit, consider adding a separate check valve to the circuit.
- Main stage orifice is protected by a 150 micron stainless steel screen.
- Pilot operated valves exhibit exceptionally flat pressure/flow characteristics, are very stable and have low hysteresis.
- Pilot operated reducing, reducing/relieving valves by nature are not fast acting valves. For superior dynamic response, consider direct acting valves.
- Stainless steel cartridge options P or W are intended for use within corrosive environments with all external components manufactured in stainless steel or titanium. Internal working
- If pilot flow consumption is critical, consider using direct acting reducing/relieving valves.
- Recommended maximum inlet pressure is determined by the adjustment range. Ranges D, E, N, and Q are tested with a 2000 psi (140 bar) maximum differential between inlet and reduced pressure. Ranges A, B, and H are tested with a 3000 psi (200 bar) maximum differential between inlet and reduced pressure. Ranges C and W are tested with 5000 psi (350 bar) of inlet pressure.
- Pressure at port 3 is directly additive to the valve setting at a 1:1 ratio and should not exceed 5000 psi (350 bar).
- All three-port pressure reducing and reducing/relieving cartridges are physically interchangeable (i.e. same flow path, same cavity for a given frame size). When considering mounting configurations, it is sometimes recommended that a full capacity return line (port 3) be used with reducing/relieving cartridges.
- Incorporates the Sun floating style construction to minimize the possibility of internal parts binding due to excessive installation torque and/or cavity/cartridge machining variations.

components remain the same as the standard valves.

Technical Data

	U.S. Units	Metric Units
Model Weight	0.43 lb.	0.20 kg.
Cavity	T-11A	
Capacity	10 gpm	40 L/min.
Adjustment - Number of Clockwise Turns to Increase Setting	5	
Control Pilot Flow	7 - 10 in ³ /min.	0,11 - 0,16 L/min.
Factory Pressure Settings Established at	blocked control port (dead headed)	
Maximum Operating Pressure	5000 psi	350 bar
Series (from Cavity)	Series 1	
Valve Hex Size	7/8 in.	22,2 mm
Valve Installation Torque	30 - 35 lbf ft	45 - 50 Nm
Adjustment Screw Hex Socket Size	5/32 in.	4 mm
Adjustment Nut Hex Size	9/16 in.	15 mm
Adjustment Nut Torque	108 lbf in.	12 Nm
Seal Kits	Buna: 990-011-007	
Seal Kits	Viton: 990-011-006	



PBDB-OAN

Control

Adjustment Range

External Material/Seal Material

○ Handknob with Panel Mount	+7.00	100 - 3000 psi (7 - 210 A bar), 200 psi (14 bar) Standard Setting	+0.00	N Buna-N +0.00
-----------------------------	-------	---	-------	----------------

If the material/seal is P, the control must be L or C
If the material/seal is W, the control must be L or C

* Special Setting required, specify at time of order
Customer specified setting stamped on hex \$1.10

Related Models

PBDB8

Copyright © 2007-2008 Sun Hydraulics Corporation. All rights reserved.
Terms and Conditions - ISO Certification - Statement of Privacy