

Pilot operated, pressure reducing valve

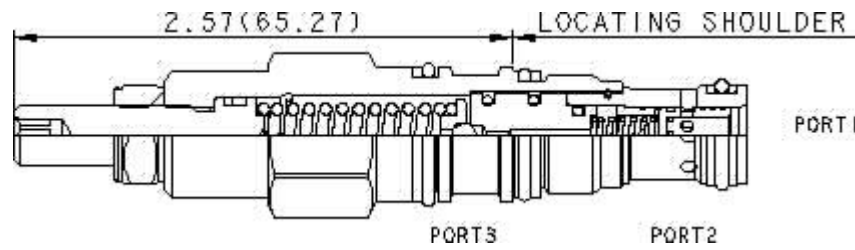
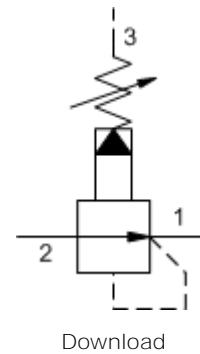
Capacity:
5 gpm (20 L/min.)

Functional Group:
Products : Cartridges : Reducing : 3 Port : Pilot Operated Reducer

Model:
PBBB-LBN

Product Description

Pilot-operated, pressure reducing valves reduce a high primary pressure at the inlet (port 2) to a constant reduced pressure at port 1, allowing circuits with multiple pressure requirements to be operated using a single pump.



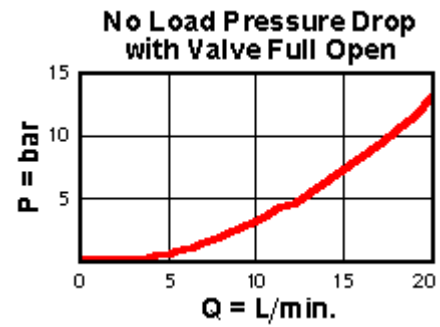
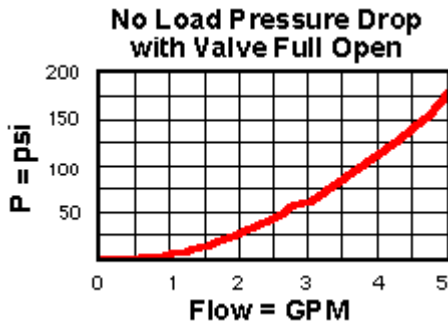
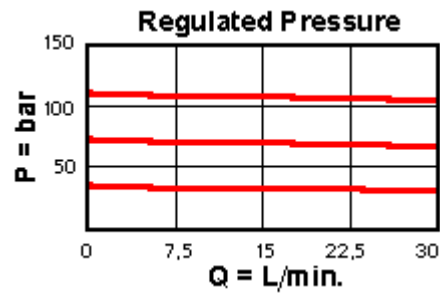
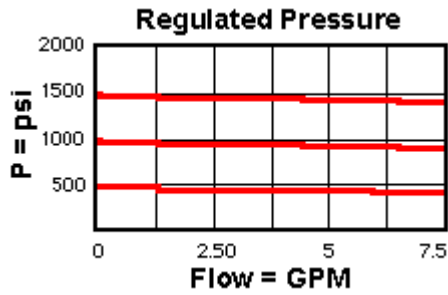
Technical Features

- Full reverse flow from reduced pressure (port 1) to inlet (port 2) may cause the main spool to close. If reverse free flow is required in the circuit, consider adding a separate check valve to the circuit.
- Main stage orifice is protected by a 150 micron stainless steel screen.
- Pressure at port 3 is directly additive to the valve setting at a 1:1 ratio and should not exceed 5000 psi (350 bar).
- Minimum setting is 75 psi (5 bar) for all spring ranges.
- Pilot operated valves exhibit exceptionally flat pressure/flow characteristics, are very stable and have low hysteresis.
- Incorporates the Sun floating style construction to minimize the possibility of internal parts binding due to excessive installation torque and/or cavity/cartridge machining variations.

Technical Data

	U.S. Units	Metric Units
Model Weight	0.24 lb.	0.11 kg.
Cavity	T-163A	
Capacity	5 gpm	20 L/min.
Adjustment - Number of Clockwise Turns to Increase Setting	5	
Control Pilot Flow	7 - 10 in ³ /min.	0,11 - 0,16 L/min.
Factory Pressure Settings Established at	blocked control port (dead headed)	
Maximum Operating Pressure	5000 psi	350 bar
Series (from Cavity)	Series 0	
Valve Hex Size	3/4 in.	19,1 mm
Valve Installation Torque	25 - 30 lbf ft	35 - 40 Nm

Adjustment Screw Hex Socket Size	5/32 in.	4 mm
Adjustment Nut Hex Size	9/16 in.	15 mm
Adjustment Nut Torque	108 lbf in.	12 Nm
Seal Kits	Buna: 990-163-007	
Seal Kits	Viton: 990-163-006	



PBBB-LBN

Control

Adjustment Range

External Material/Seal Material

L Standard Screw Adjustment	+0.00	75 - 1500 psi (5 - 105 B bar), 200 psi (14 bar) Standard Setting	+0.00	N Buna-N +0.00
-----------------------------	-------	--	-------	----------------

Customer specified setting stamped on hex \$1.10

- Explanation of Sun cartridge control options - US units.
- Explanation of Sun cartridge control options - metric units.

Copyright © 2007-2008 Sun Hydraulics Corporation. All rights reserved.
 Terms and Conditions - ISO Certification - Statement of Privacy