



Full-Flow Lube Filtration

Filter Dia. 93 MM (3.66") X 1"-12



Flow Range: up to 20 gpm / 76 lpm

Operating Pressure

Up to 150 psi (1034 kPa)

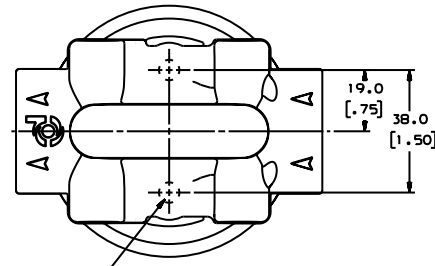
Flow Rate

Up to 20 gpm / 76 lpm

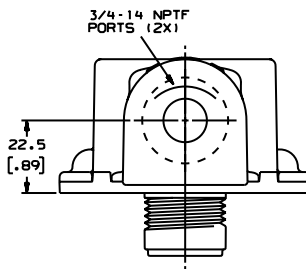
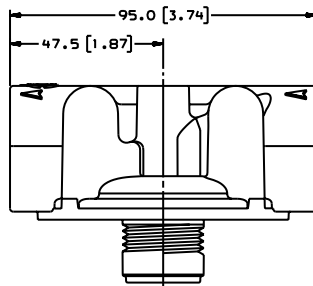
Oil Compatibility

Compatible with petroleum based fluids (hydrocarbon) and up to 20% biodiesel

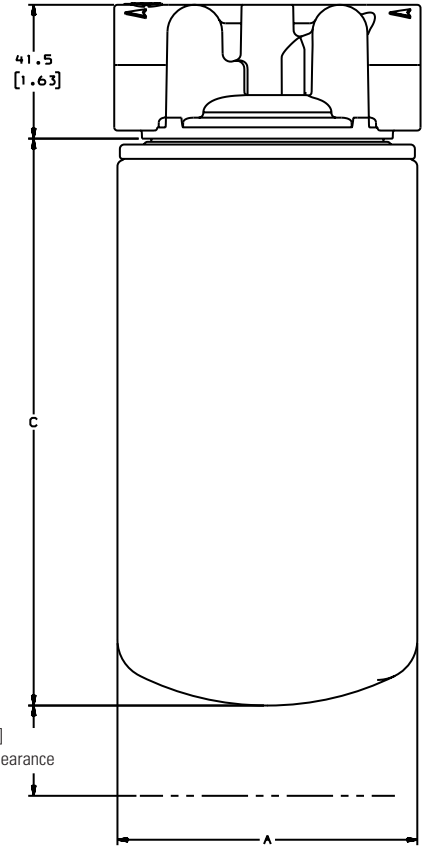
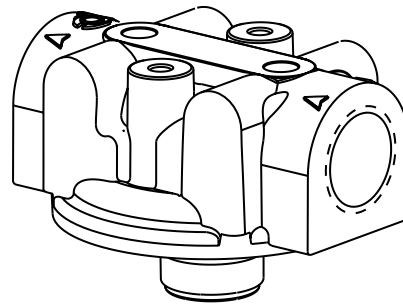
Head Part No.
P561134



1/4-20 UNC-2B (2X)



3/4-14 NPTF PORTS (2X)





Filter Selection Chart

Outer Diameter		(C) Filter Length		Media Type	Efficiency @ Micron	Part Number	Performance Curve	Anti-Drain Back Valve	Filter Relief Valve Setting		Stand Tube	Gasket Outer Diameter		Gasket Inner Diameter					
in	mm	in	mm						PSI	Bar		in	mm	in	mm				
3.66	93	5.35	136	Cellulose	99% @ 40	P552819	B	Yes	18-23	1.30-1.60	No	2.83	72	2.42	61				
				Cellulose		P555680	C		18-23	1.30-1.60	No								
		6.85	174	Cellulose		P553712	C			No									
				Cellulose		P555616	A	Yes			Yes								
				Cellulose		P557207	C		7-10	0.50-0.70	No								
7.87	200	Cellulose	P553771	A		Yes	35	2.41	No										
3.74	95	5.35	136	Cellulose		P559418	B	Yes	36	2.48	No								
3.81	97	6.85	174	Cellulose		P558250	B	Yes	11-17	0.80-1.00	No								

Performance Curves

