

LPS04 Spin-on Filter

Maximum Working Pressures to: 150 *psi*
1034 kPa
10.3 bar

Flow Range to: 30 *gpm*
114 *l/min*



Features

The LPS04 series is an economical, low pressure filter with spin-on convenience and a wide range of cleanliness ratings. It is available with the bypass ratings of your choice—25 *psi*, 5 *psi* or no bypass.

Take advantage of our Mix 'n Match system of in-stock heads & elements, so you can get exactly what you need!

Likewise, choose the media type and configuration that's best for your application. Options include Donaldson's exclusive Synteq®, natural fiber cellulose, wiremesh or water absorbing media.

Beta Rating

- Performance to $\beta_{11(c)}=1000$

Porting Sizes

- 3/4" NPT or SAE-12 O-Ring

Replacement Filter Lengths

- Synteq® 5.35" / 136mm
7.87" / 200mm
- Cellulose 5.35" / 136mm
8.6" / 218mm
- Wiremesh 5.69" / 144mm
- Water Removal 5.21" / 132mm

Standard Bypass Ratings

- 25 *psi* / 172.5 kPa / 1.7 bar
- 5 *psi* / 34.5 kPa / .34 bar
- No Bypass

Assembly Weight

- 2.2 lbs / 1 kg (approx.)

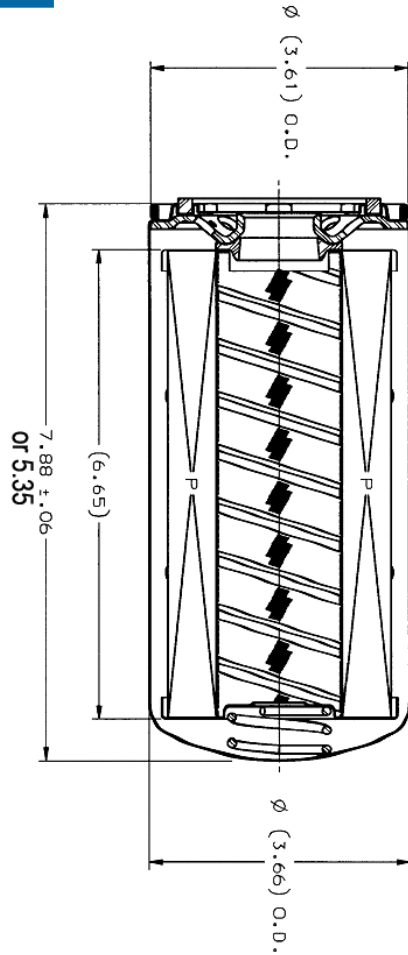
Operating Temperatures

- -20°F to 225°F / -27°C to 107°C

Collapse Ratings

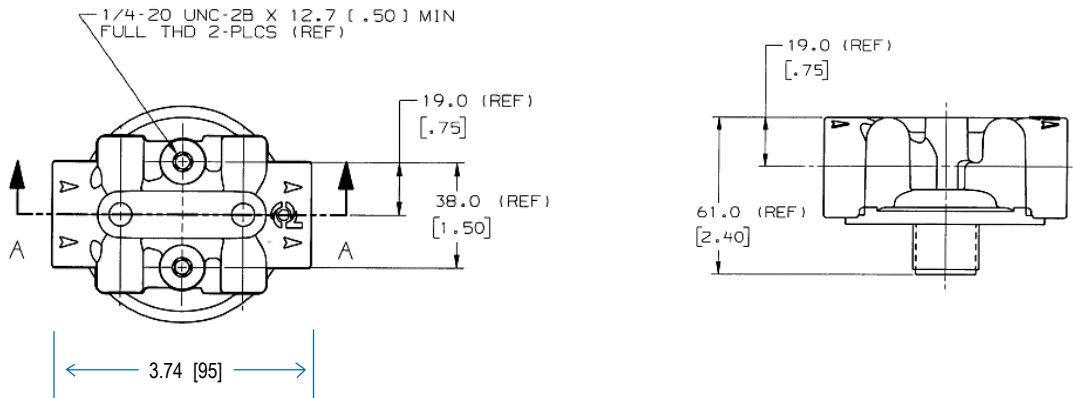
- 100 *psid* / 690 kPa / 6.9 bar (standard)

Element Dimensions



for:
**In-Plant Systems
 Ag Equipment
 Mining
 Construction
 Logging**

Head Dimensions



● All dimensions above are shown in inches [millimeters]

LPS04 Components

Element Choices

| Media Type | B _{x(c)} =1000 Rating | Length (in/cm) | Part Number | Comments |
|---------------------|--------------------------------|----------------|-------------|-------------------------|
| Synteq® Media #2½ | 11µm | 5.35/136 | P560693 | Synthetic Media |
| Synteq® Media #9 | 20µm | 5.35/136 | P560694 | Synthetic Media |
| Cellulose Media #3 | 23µm | 5.35/136 | P551550 | |
| Cellulose Media #10 | 27µm | 5.35/136 | P551551 | |
| | | 8.6/218 | P550255 | |
| Media Type | B _{x(c)} =200 Rating | Length (in/cm) | Part Number | Comments |
| Cellulose Media #25 | 45µm | 5.35/136 | P551553 | |
| Cellulose Media #25 | 45µm | 8.6/218 | P550256 | |
| Cellulose Media #25 | 45µm | 5.21/132 | P551554 | Water Absorption Media* |
| Media Type | | Length (in/cm) | Part Number | Comments |
| Wiremesh Media #149 | 150µm | 5.69/144 | P550274 | |

* Absorbs approx. 6 oz/170 ML of water @ 20 psid.

Notes

- All models have 1"-12 threads and measure 3.69" / 94mm outer diameter.
- Synteq® filter media is compatible with petroleum based fluids, and most phosphate esters, water oil emulsions, and HWCF (high water content fluids).

Head Choices

| Port Size ⁴ | Bypass Rating | Part No. |
|------------------------|-------------------------------|----------|
| ¾" NPT | 5 psi / 34.5 kPa / .34 bar | P561135 |
| ¾" NPT | 25 psi / 172.5 kPa / 1.72 bar | P561134 |
| ¾" NPT | No Bypass | P561136 |
| SAE-12 O-Ring | No Bypass | P561133 |
| SAE-12 O-Ring | 5 psi / 34.5 kPa / .34 bar | P561140 |
| SAE-12 O-Ring | 25 psi / 172.5 kPa / 1.72 bar | P561141* |
| SAE-8 O-Ring | 25 psi / 172.5 kPa / 1.72 bar | P561138 |

*This model has gauge ports (2).



Filter Service Gauge

| Part Number | Bypass Rating |
|-------------|------------------------------|
| P174772 | 25 psi / 172.5 kPa / 1.7 bar |

- Gauge fits into 1/8" NPT port.
- For complete product information, see Accessories section (pp 92-97).



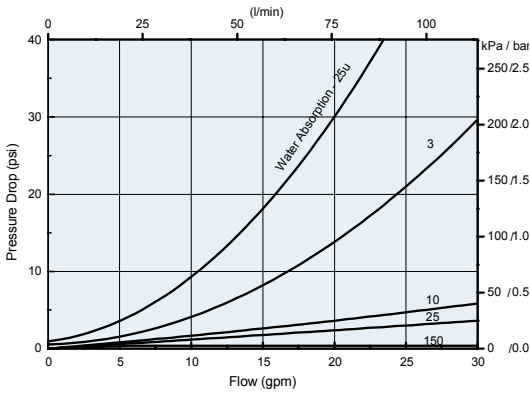
Mix 'n Match...

Donaldson's Mix 'n Match system provides the great performance and functional advantages of custom-engineered filters with the convenience and speedy delivery of in-stock parts. Choose your options and build a filter model to suit your specifications.

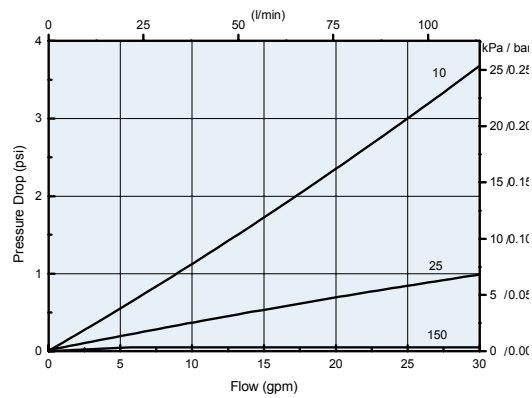
Performance Data

For a full explanation of how our performance curves were derived, see page 100.

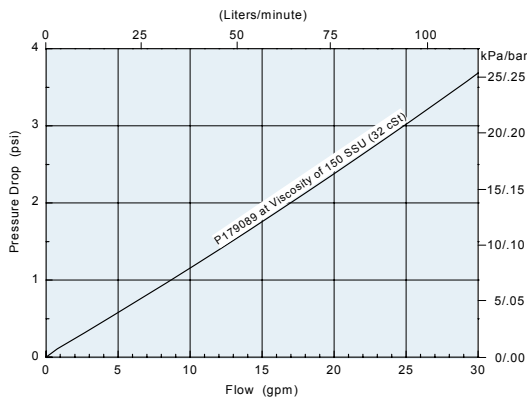
LPS04 Filter Only
(Cellulose Media, 5.2"/132mm)



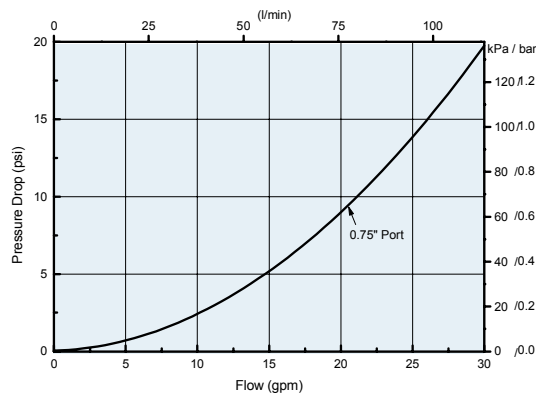
LPS04 Filter Only
(Cellulose Media, 8.6"/218mm)



LPS04 Filter Only
(Synthetic Media, 7.87"/200mm)



LPS04 Head Only



LPS04 Filter Only
(Synthetic Media, 5.35"/136mm)

