

Air bleed and start-up valve

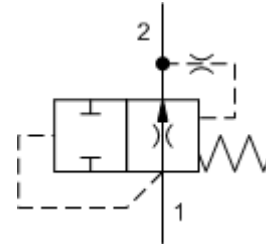
Capacity:
4 - 50 gpm (15 - 200
L/min.)

Functional Group:
Products : Cartridges : Circuit Saver : 2 Port : Air Bleed Start-up
Valve

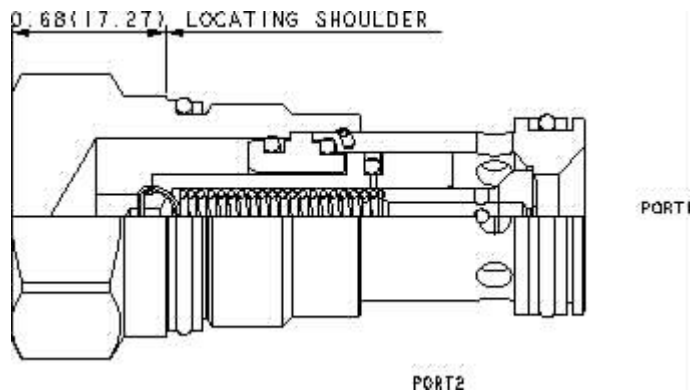
Model:
NQEB-XAN

Product Description

Air-bleed and start-up cartridges are used to purge air trapped in the system to help reduce power requirements and facilitate pump priming during the start-up of blocked center circuits.



Download

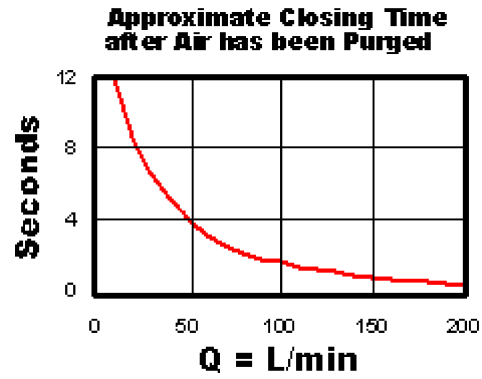
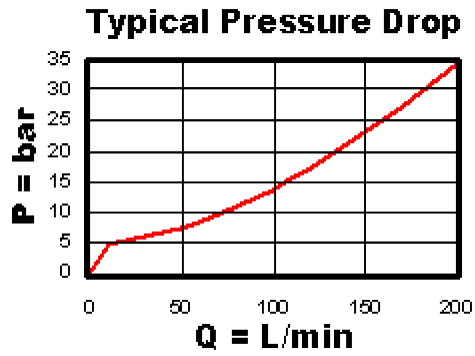
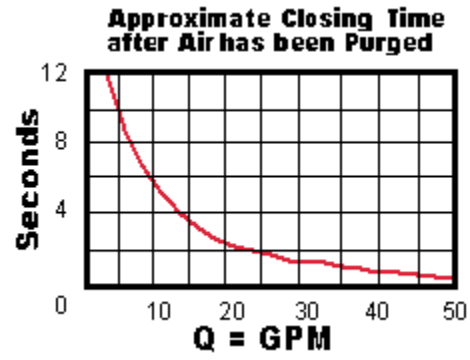
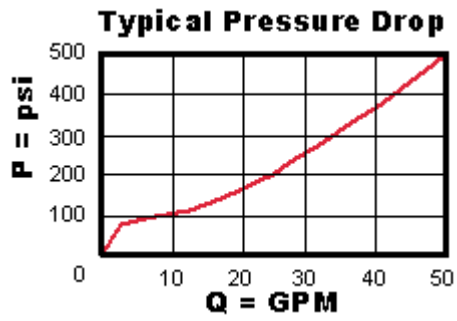


Technical Features

- Air-bleed and start-up valves require a minimum of 4 gpm (15 L/min.) flow rate and 80 psi (5,5 bar) system pressure.
- The valve will re-open when system pressure falls below 25 psi (1,7 bar)
- After air has been purged, closing times vary from approximately 12 seconds at 4 gpm to 0,5 seconds at 50 gpm.
- Incorporates the Sun floating style construction to minimize the possibility of internal parts binding due to excessive installation torque and/or cavity/cartridge machining variations.

Technical Data

	U.S. Units	Metric Units
Cavity		T-3A
Capacity	4 - 50 gpm	15 - 200 L/min.
Maximum Operating Pressure	5000 psi	350 bar
Series (from Cavity)		Series 2
Valve Hex Size	1 1/8 in.	28,6 mm
Valve Installation Torque	45 - 50 lbf ft	60 - 70 Nm
Model Weight	.40 lb	0,20 kg
Seal Kits	Buna: 990-203-007	
Seal Kits	Viton: 990-203-006	



NOEB-XAN

Control

Adjustment Range

External Material/Seal
Material

X Not Adjustable +0.00

A - +0.00

N Buna-N +0.00