

Fully adjustable needle valve with reverse flow check

Capacity:
.56 in. (14,2 mm)

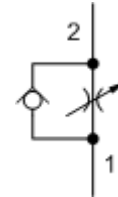
Functional Group:

Products : Cartridges : Flow Control : 2 Port : Fully Adjustable Needle Valve, With Reverse Flow Check

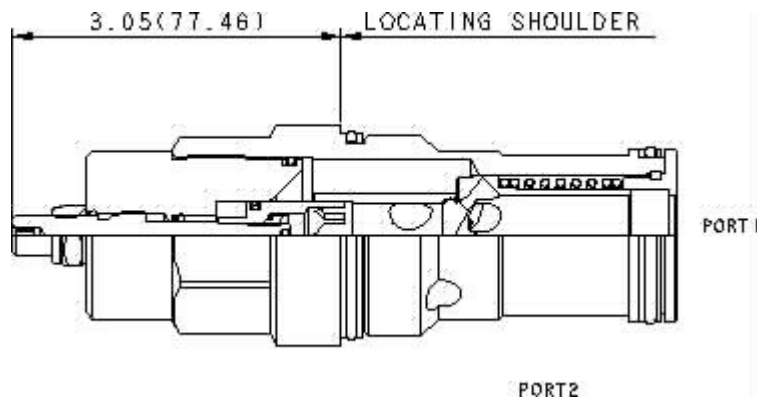
Model:
NCGB-LCN

Product Description

Needle valves with reverse-flow check are fully adjustable orifices used to regulate flow. They are infinitely adjustable from fully closed up to the maximum orifice diameter. An integral high-capacity check valve provides unrestricted flow from port 2 to port 1. They are not pressure-compensated.



[Download](#)



Technical Features

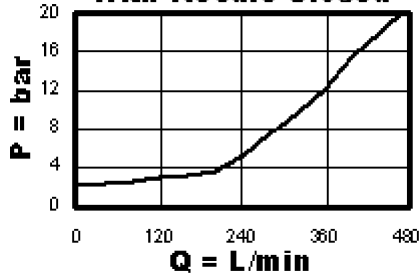
- All 2-port flow control cartridges are physically and functionally interchangeable (i.e. same flow path, same cavity for a given frame size). However, cartridge extension dimensions from the mounting surface may vary.
- A balanced adjustment mechanism allows for easy adjustment even at high pressures.
- Incorporates the Sun floating style construction to minimize the possibility of internal parts binding due to excessive installation torque and/or cavity/cartridge machining variations.
- Because needle valves are non-compensating devices, the fixed orifice size will regulate flow through the valve in proportion to the square root of the pressure differential across ports 1 and 2.
- The sharp-edged orifice design minimizes flow variations due to viscosity changes.

Technical Data

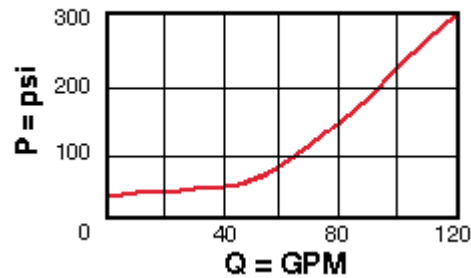
	U.S. Units	Metric Units
Cavity		T-18A
Capacity	.56 in.	14,2 mm
Adjustment - Number of Counterclockwise Turns - Fully Closed to Fully Open		5
Maximum Operating Pressure	5000 psi	350 bar
Maximum Valve Leakage at 110 SUS (24 cSt)	5 drops/min.	0,4 cc/min.
Series (from Cavity)		Series 4

Valve Hex Size	1 5/8 in.	41,3 mm
Valve Installation Torque	350 - 375 lbf ft	465 - 500 Nm
Adjustment Screw Hex Socket Size	5/32 in.	4 mm
Adjustment Nut Hex Size	9/16 in.	15 mm
Adjustment Nut Torque	108 lbf in.	12 Nm
Model Weight	3.00 lb	1,35 kg
Seal Kits	Buna: 990-018-007	
Seal Kits	Viton: 990-018-006	

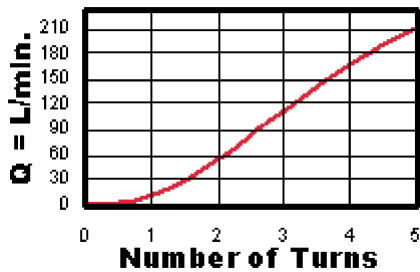
Reverse Flow Pressure Drop with Needle Closed



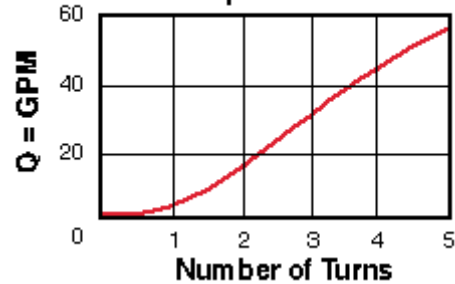
Reverse Flow Pressure Drop with Needle Closed



Adjustment Sensitivity at 7 bar Differential



Adjustment Sensitivity at 100 psi Differential



NCGB-LCN

Control

Reverse Flow Check

External Material/Seal Material

L Standard Screw Adjustment +0.00 C 30 psi (2 bar) +0.00 N Buna-N +0.00

Stainless material/seal options not available for this model

- Explanation of Sun cartridge control options - US units.
- Explanation of Sun cartridge control options - metric units.