

Fully adjustable needle valve with reverse flow check

Capacity:
.19 in. (4,8 mm)

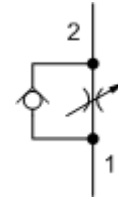
Functional Group:

Products : Cartridges : Flow Control : 2 Port : Fully Adjustable Needle Valve, With Reverse Flow Check

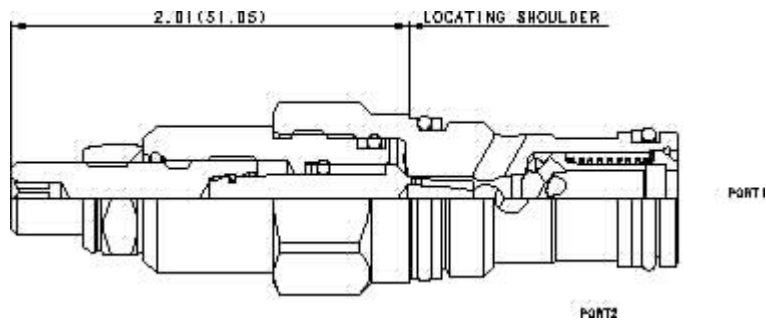
Model:
NCCB-LAN

Product Description

Needle valves with reverse-flow check are fully adjustable orifices used to regulate flow. They are infinitely adjustable from fully closed up to the maximum orifice diameter. An integral high-capacity check valve provides unrestricted flow from port 2 to port 1. They are not pressure-compensated.



[Download](#)



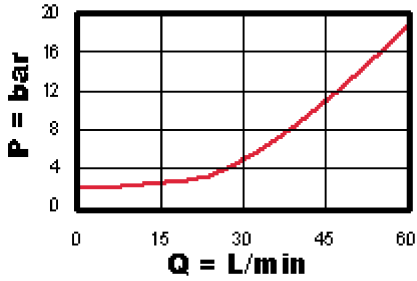
Technical Features

- All 2-port flow control cartridges are physically and functionally interchangeable (i.e. same flow path, same cavity for a given frame size). However, cartridge extension dimensions from the mounting surface may vary.
- The sharp-edged orifice design minimizes flow variations due to viscosity changes.
- Because needle valves are non-compensating devices, the fixed orifice size will regulate flow through the valve in proportion to the square root of the pressure differential across ports 1 and 2.

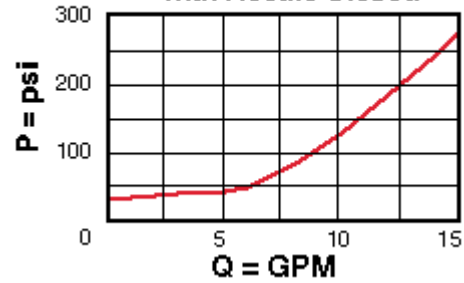
Technical Data

	U.S. Units	Metric Units
Model Weight	0.30 lb.	0.14 kg.
Cavity	T-13A	
Capacity	.19 in.	4,8 mm
Adjustment - Number of Counterclockwise Turns - Fully Closed to Fully Open	5	
Maximum Operating Pressure	5000 psi	350 bar
Maximum Valve Leakage at 110 SUS (24 cSt)	5 drops/min.	0,4 cc/min.
Series (from Cavity)	Series 1	
Valve Hex Size	7/8 in.	22,2 mm
Valve Installation Torque	30 - 35 lbf ft	45 - 50 Nm
Adjustment Screw Hex Socket Size	5/32 in.	4 mm
Adjustment Nut Hex Size	9/16 in.	15 mm
Adjustment Nut Torque	108 lbf in.	12 Nm
Seal Kits	Buna: 990-010-007	

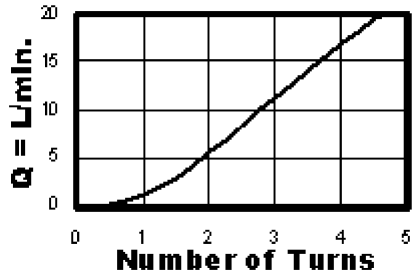
Reverse Flow Pressure Drop with Needle Closed



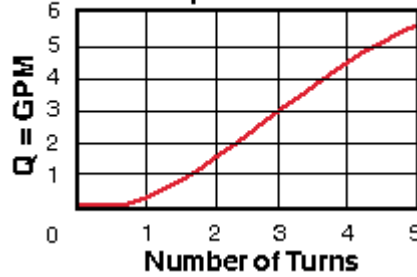
Reverse Flow Pressure Drop with Needle Closed



Adjustment Sensitivity at 7 bar Differential



Adjustment Sensitivity at 100 psi Differential



NCCB-LAN

Control

Reverse Flow Check

External Material/Seal Material

L Standard Screw Adjustment	+0.00	A 4 psi (0,3 bar)	+0.00	N Buna-N	+0.00
-----------------------------	-------	-------------------	-------	----------	-------

Stainless material/seal options not available for this model

- Explanation of Sun cartridge control options - US units.
- Explanation of Sun cartridge control options - metric units.