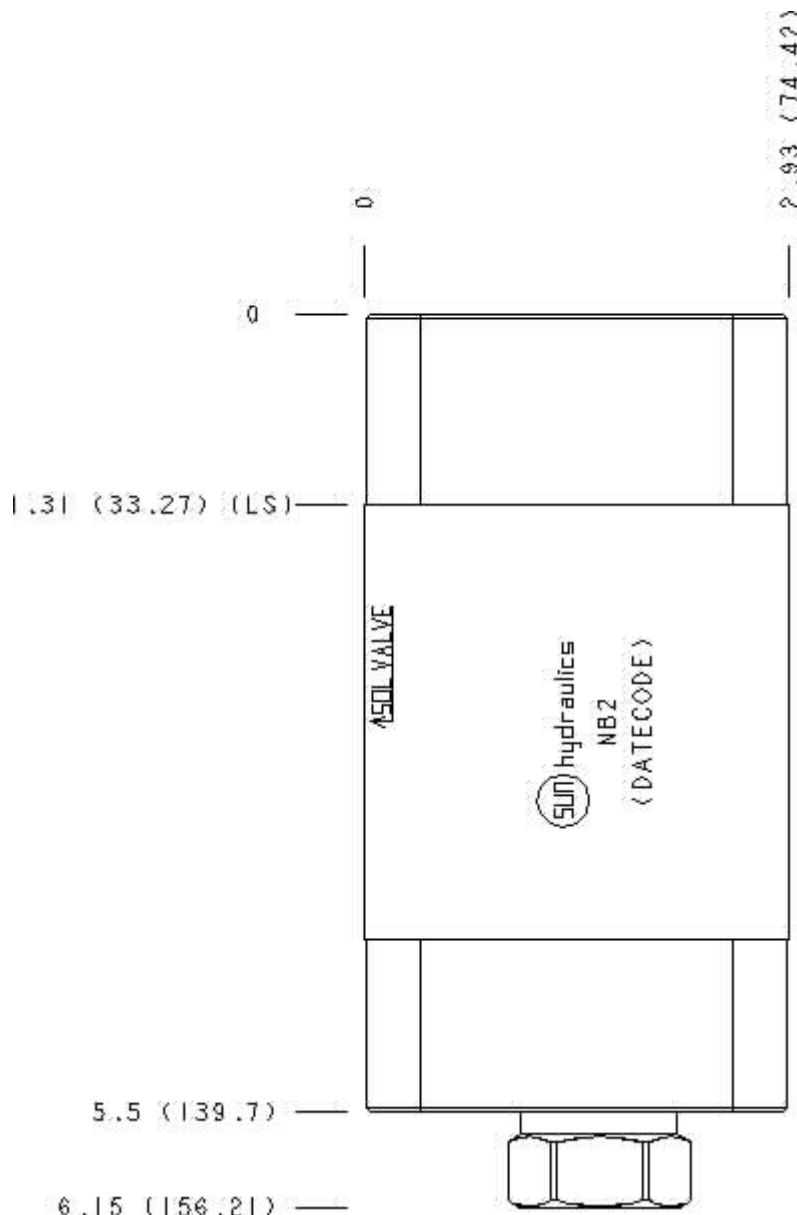


Functional Group:

Model:

Products : Manifolds : Sandwich : Reducing/Relieving : ISO 05 : On A, tank to T with reverse flow check, external vent **NB2**

Face : 6



Cartridge extension measurement is to the centerline of the cartridge.

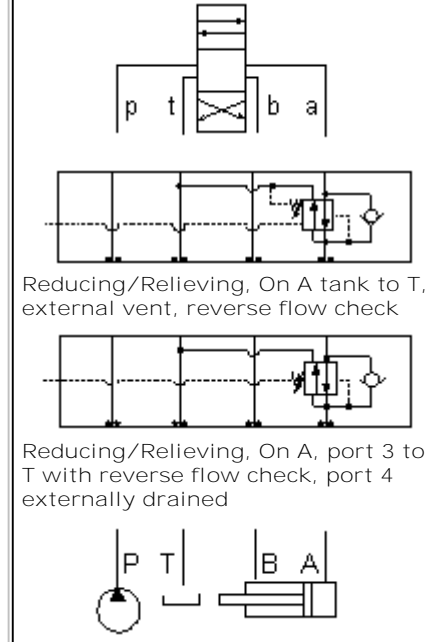
Aluminum Body Pressure Rating: **3000 psi (210 bar)**
 Ductile Iron Body Pressure Rating: **5000 psi (350 bar)**

Port Headings and Sizes:

External Port

External Port

Function



Reducing/Relieving, On A tank to T, external vent, reverse flow check

Reducing/Relieving, On A, port 3 to T with reverse flow check, port 4 externally drained

Technical Data

	U.S. Units	Metric Units
Model Weight	3.61 lb.	1.64 kg.
Cavity	T-22A	
Body Features	Reducer/reliever on A with reverse flow check and port 4 external	
Body Type	Sandwich	
Interface	ISO 05	
Open Cavity Quantity	1	
Stack Height	2.99 in.	76 mm

Option Selection:

Model Code	Description
NB2	Aluminum, Buna-N, U.S. Units
NB2/M	Aluminum, Buna-N, Metric
NB2/S	Ductile Iron, Buna-N, U.S. Units
NB2/T	Ductile Iron, Buna-N, Metric
NB2/V	Aluminum, Viton, U.S. Units
NB2/W	Ductile Iron, Viton, Metric
NB2/Y	Ductile Iron, Viton, U.S. Units
NB2/Z	Aluminum, Viton, Metric

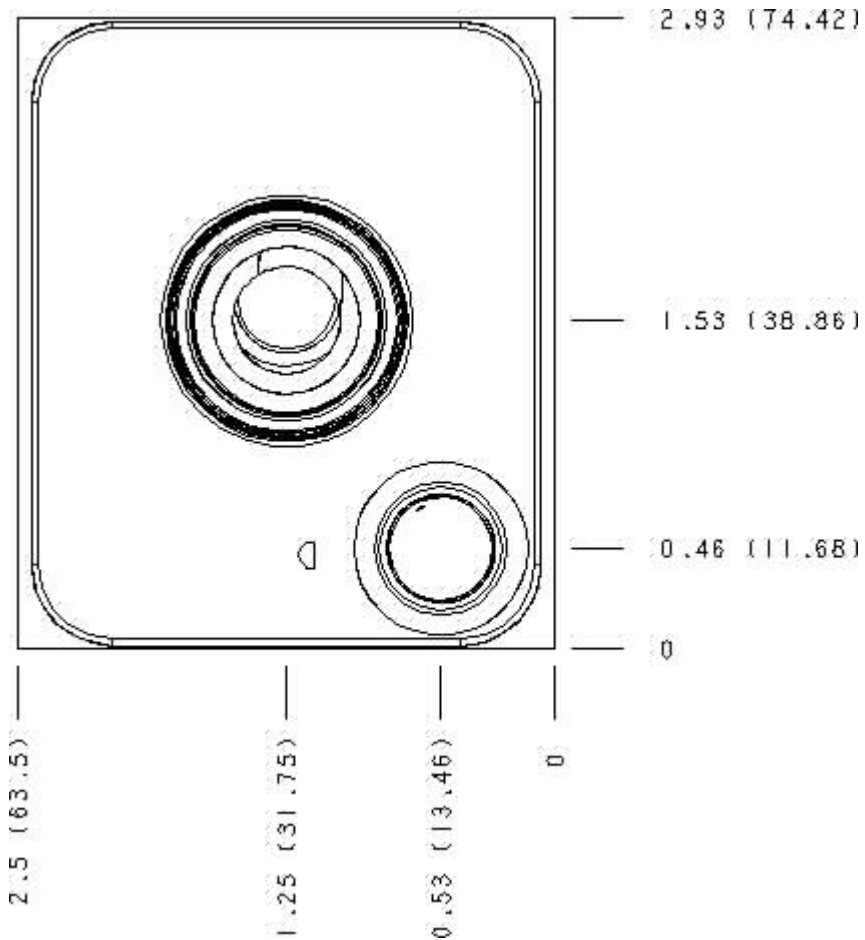
Special Notes :

No Special Notes available for selected Model.



Functional Group:
 Products : Manifolds : Sandwich : Reducing/Relieving : ISO 05 : On A, tank to
 T with reverse flow check, external vent

Model:
 NB2

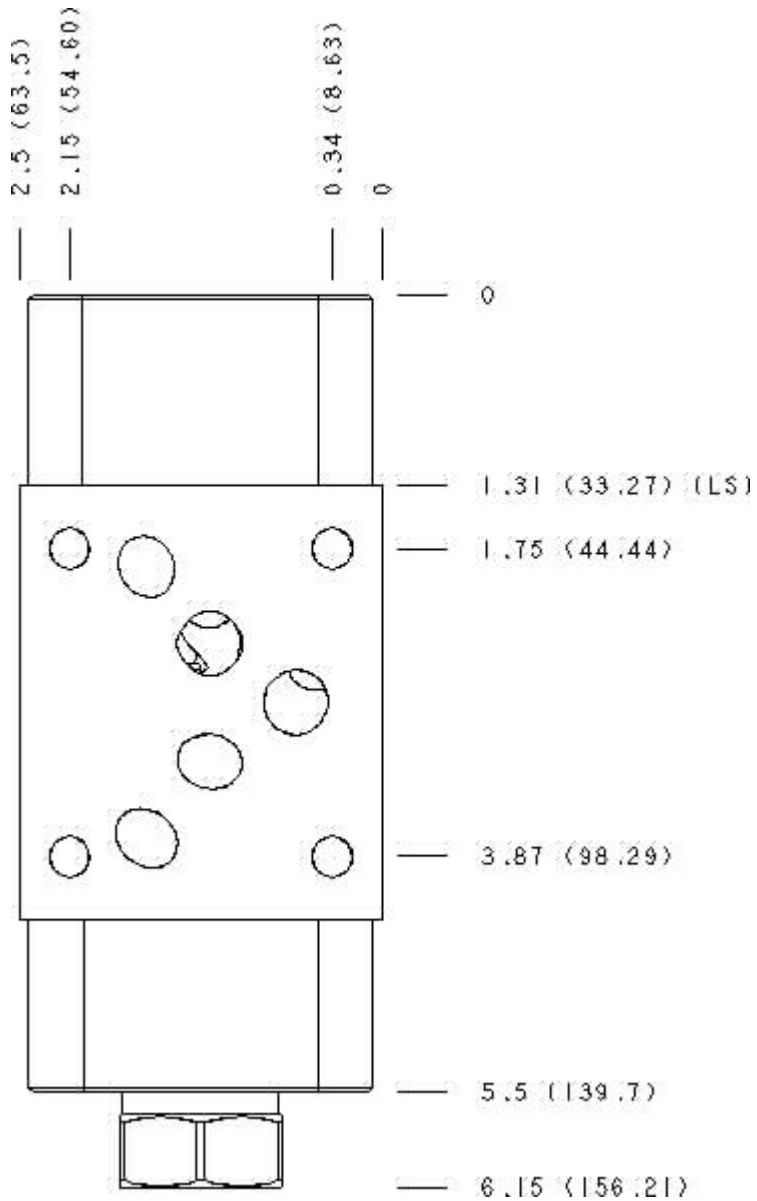


Cartridge extension measurement is to the centerline of the cartridge.



Functional Group:
Products : Manifolds : Sandwich : Reducing/Relieving : ISO 05 : On A, tank to
T with reverse flow check, external vent

Model:
NB2



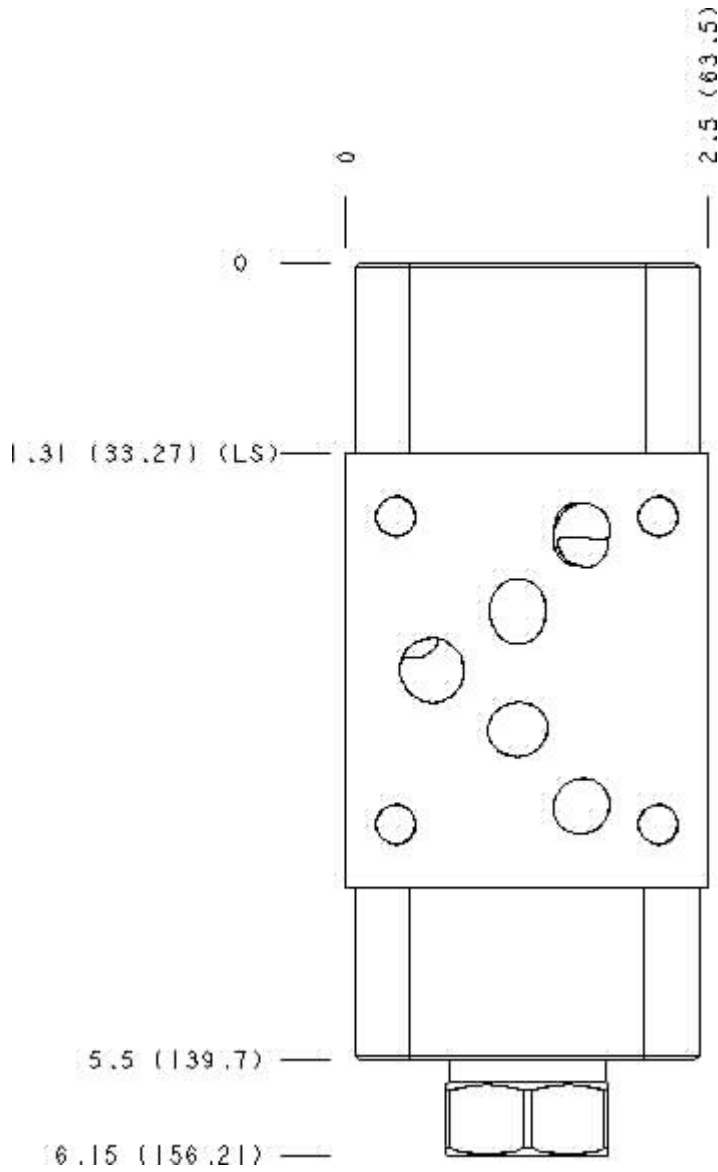
Cartridge extension measurement is to the centerline of the cartridge.



Functional Group:
 Products : Manifolds : Sandwich : Reducing/Relieving : ISO 05 : On A, tank to
 T with reverse flow check, external vent

Model:
 NB2

Face : 7



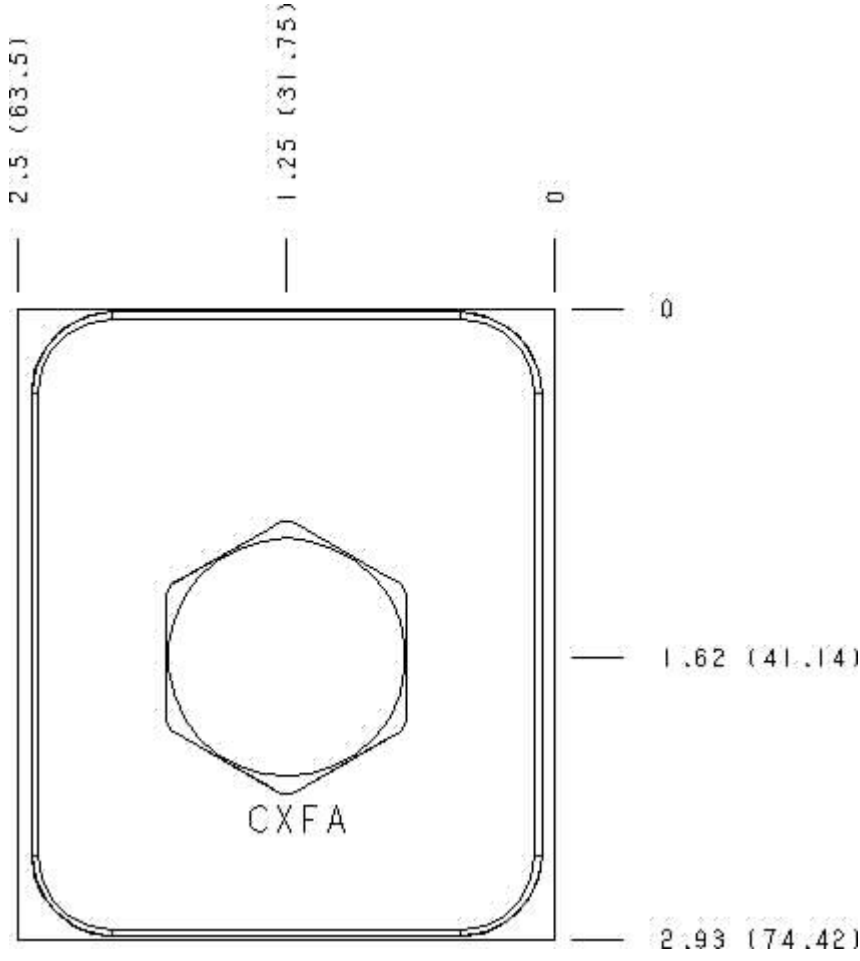
Cartridge extension measurement is to the centerline of the cartridge.



Functional Group:
 Products : Manifolds : Sandwich : Reducing/Relieving : ISO 05 : On A, tank to T with reverse flow check, external vent

Model:
 NB2

Face : 9



Cartridge extension measurement is to the centerline of the cartridge.



Functional Group:

Products : Manifolds : Sandwich : Reducing/Relieving :
 ISO 05 : On A, tank to T with reverse flow check,
 external vent

Model:
 NB2

Projection Type

All Dimensions in Inches(mm)

