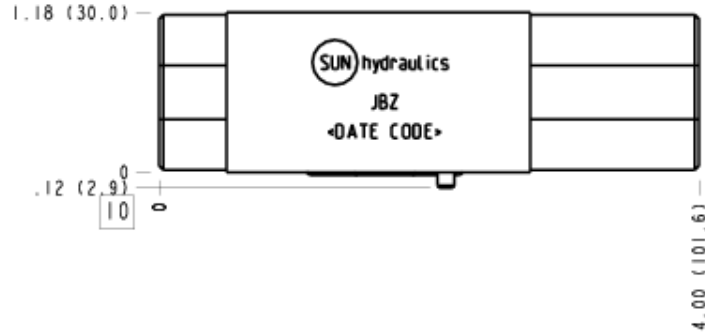
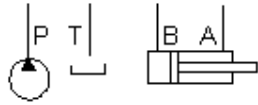


Relief, P to T, Port 3 External



TECHNICAL DATA

Body Type	Sandwich
Interface	ISO 03 - 30mm
Body Features	P to T, port 3 external
Stack Height	1.19 in.
Seal Plate Included (see notes)	No
Open Cavities	1
Cavity	T-163A
Port Size	SAE 4
Model Weight	0.64 lb.

NOTES

- Seal retainer plate is not required for this model.
- **Important:** Carefully consider the maximum system pressure. The pressure rating of the manifold is dependent on the manifold material, with the port type/size a secondary consideration. Manifolds constructed of aluminum are not rated for pressures higher than 3000 psi (210 bar), regardless of the port type/size specified.

PORT DESIGNATORS

Modifiers	Ports
JBZ, /10, /11, /15, /16, /S, /S3, /V, /Y, /Y3	Vent Port: SAE 4;
JBZ/1A, /1B, /1F, /1G, /M, /T, /T3, /W, /W3, /Z	Vent Port: 1/4" BSPP;

INCLUDED COMPONENTS

Part	Description	Quantity
500-001-012	O-Ring	4
811-001-006	Pin	1

CONFIGURATION OPTIONS

Model Code Example: JBZ

MODIFIER

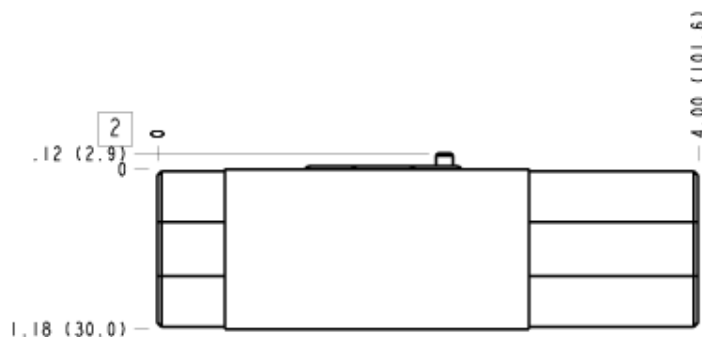
6061-T651 Aluminum, Buna-N
/11 6061-T651 Aluminum, Buna-N, Clear Anodize - Per MIL SPEC 8625F Type II, Class I
/10 6061-T651 Aluminum, Buna-N, Black Anodize - Per MIL SPEC 8625F Type II, Class II
/V 6061-T651 Aluminum, Viton
/16 6061-T651 Aluminum, Viton, Clear Anodize - Per MIL SPEC 8625F Type II, Class I
/15 6061-T651 Aluminum, Viton, Black Anodize - Per MIL SPEC 8625F Type II, Class II
/M 6061-T651 Aluminum, Metric, Buna-N
/1B 6061-T651 Aluminum, Metric, Buna-N, Clear Anodize - Per MIL SPEC 8625F Type II, Class I
/1A 6061-T651 Aluminum, Metric, Buna-N, Black Anodize - Per MIL SPEC 8625F Type II, Class II
/Z 6061-T651 Aluminum, Metric, Viton
/1G 6061-T651 Aluminum, Metric, Viton, Clear Anodize - Per MIL SPEC 8625F Type II, Class I
/1F 6061-T651 Aluminum, Metric, Viton, Black Anodize - Per MIL SPEC 8625F Type II, Class II
/S 65-45-12 Ductile Iron, Buna-N, Chem. Black
/S3 65-45-12 Ductile Iron, Buna-N, Trivalent Clear Zinc with Top Sealer
/Y 65-45-12 Ductile Iron, Viton, Chem. Black
/Y3 65-45-12 Ductile Iron, Viton, Trivalent Clear Zinc with Top Sealer
/T 65-45-12 Ductile Iron, Metric, Buna-N, Chem. Black
/T3 65-45-12 Ductile Iron, Metric, Buna-N, Trivalent Clear Zinc with Top Sealer
/W 65-45-12 Ductile Iron, Metric, Viton, Chem. Black
/W3 65-45-12 Ductile Iron, Metric, Viton, Trivalent Clear Zinc with Top Sealer

MANIFOLD FACES

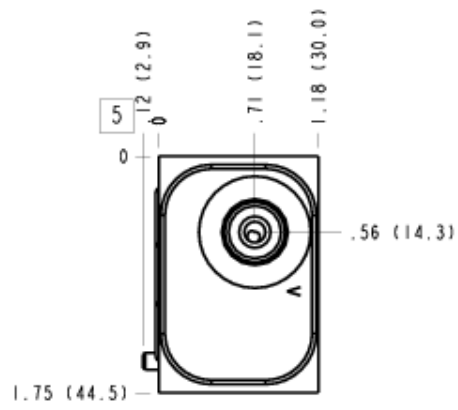
FACE GRID

1	2	3	4
5	6	7	8
9	10	11	12

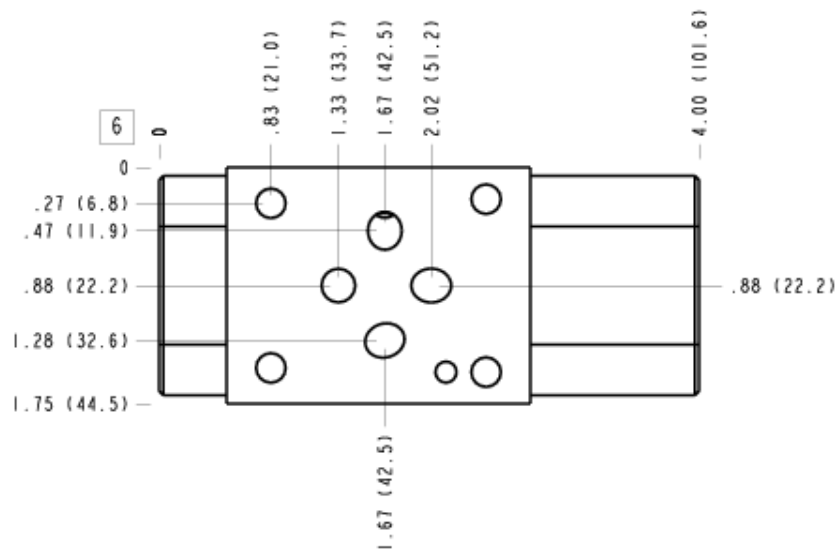
Face 2



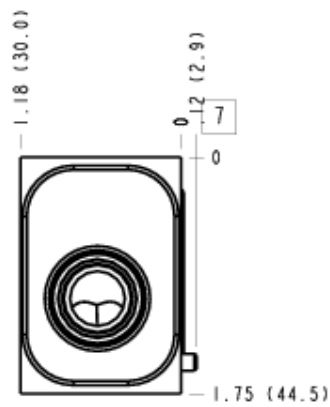
Face 5



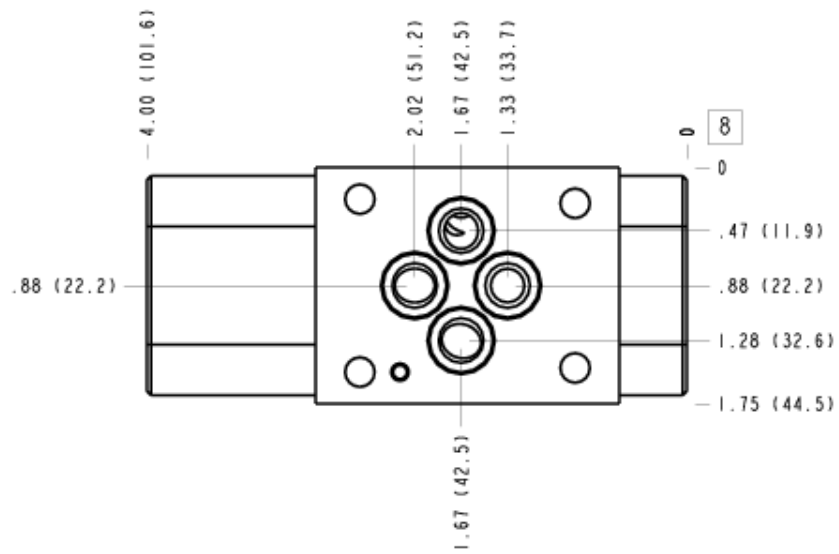
Face 6



Face 7



Face 8



Face 10

