

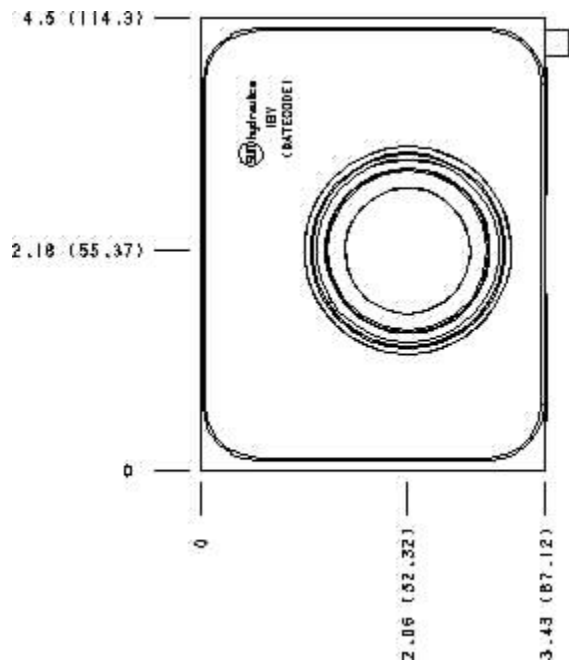
Functional Group:

Model:

Products : Manifolds : Sandwich : Flow Control : ISO 08 : Meter out on A and B, high capacity

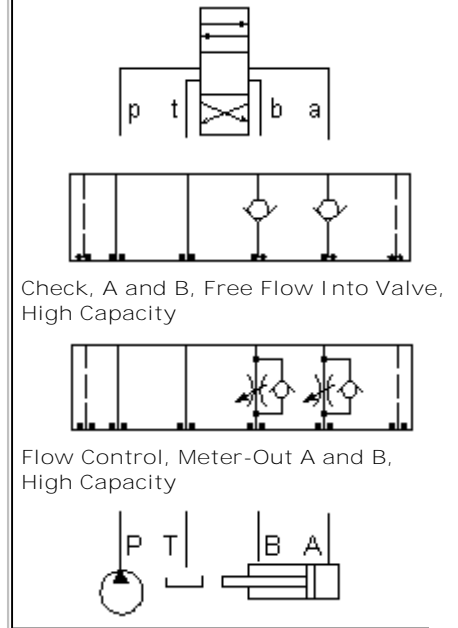
IBY

Face : 7



Cartridge extension measurement is to the centerline of the cartridge.

Function



Aluminum Body Pressure Rating: **3000 psi (210 bar)**
 Ductile Iron Body Pressure Rating: **5000 psi (350 bar)**

Technical Data

	U.S. Units	Metric Units
Model Weight	10.34 lb.	4.69 kg.
Cavity	T-18A	
Body Features	Out of A and B	
Body Type	Sandwich	
Interface	ISO 08	
Open Cavity Quantity	2	
Stack Height	3.44 in.	87 mm

Option Selection:

Model Code

Description

IBY	Aluminum, Buna-N, U.S. Units
IBY/S	Ductile Iron, Buna-N, U.S. Units
IBY/V	Aluminum, Viton, U.S. Units
IBY/Y	Ductile Iron, Viton, U.S. Units

Special Notes :

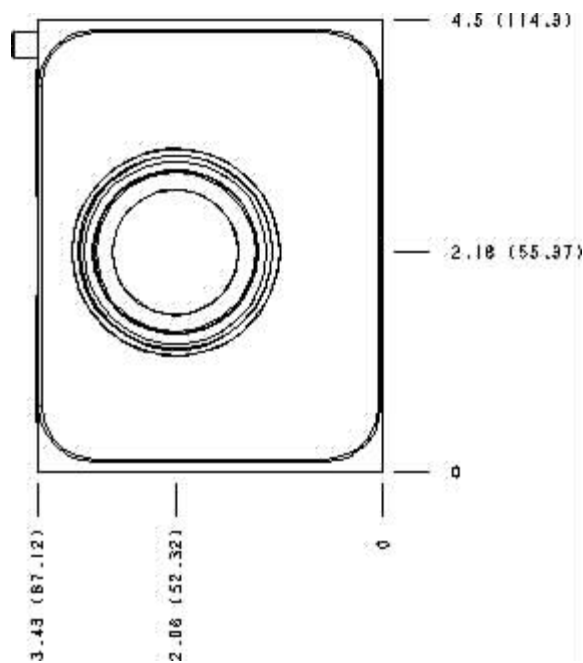
- 1 For check valve application, use only with CX*A check valves - free flow nose to side.



Functional Group:
 Products : Manifolds : Sandwich : Flow Control : ISO 08 : Meter out on A and
 B, high capacity

Model:
 IBY

Face : 5



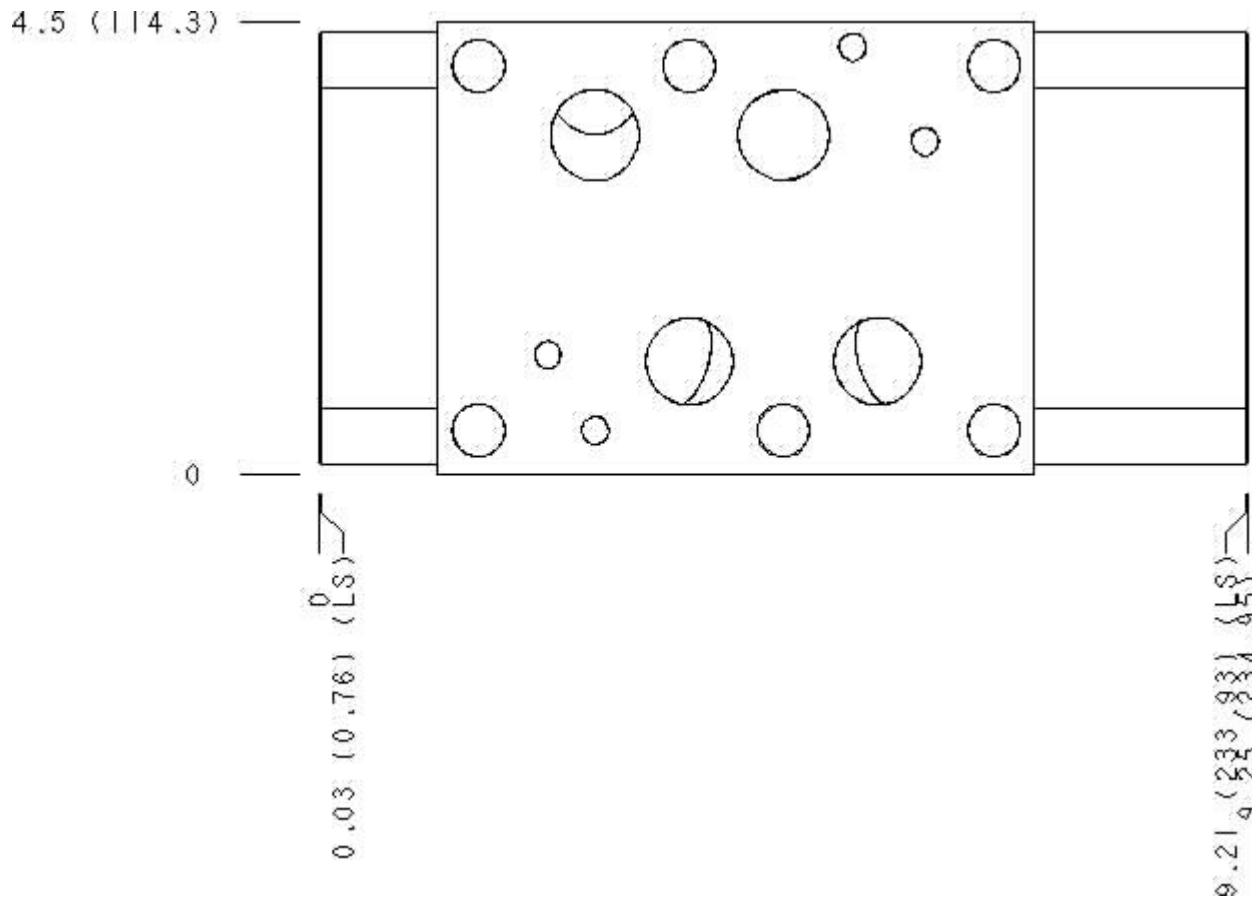
Cartridge extension measurement is to the centerline of the cartridge.



Functional Group:
 Products : Manifolds : Sandwich : Flow Control : ISO 08 : Meter out on A and

Model:

Face : 6



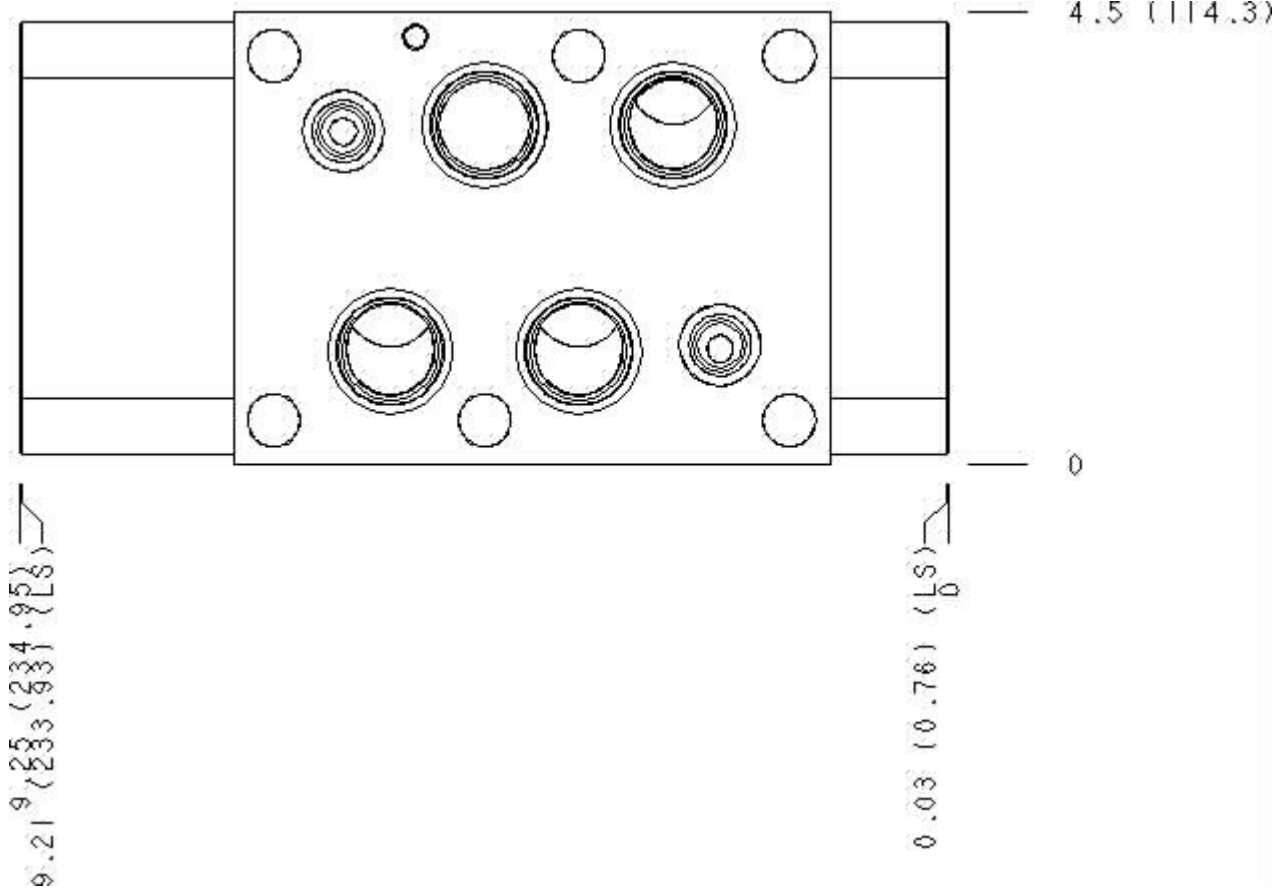
Cartridge extension measurement is to the centerline of the cartridge.



Functional Group:
Products : Manifolds : Sandwich : Flow Control : ISO 08 : Meter out on A and
B, high capacity

Model:
IBY

Face : 8



Cartridge extension measurement is to the centerline of the cartridge.



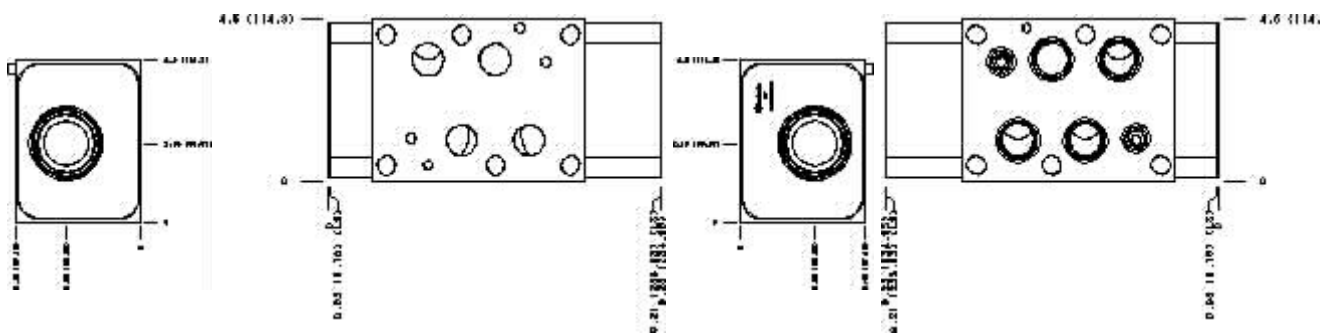
Functional Group:

Products : Manifolds : Sandwich : Flow Control : ISO
 08 : Meter out on A and B, high capacity

Model:
 I BY

Projection Type

All Dimensions in Inches(mm)



Copyright © 2007-2008 Sun Hydraulics Corporation.
All rights reserved.

[Terms and Conditions](#) - [Statement of Privacy](#)