

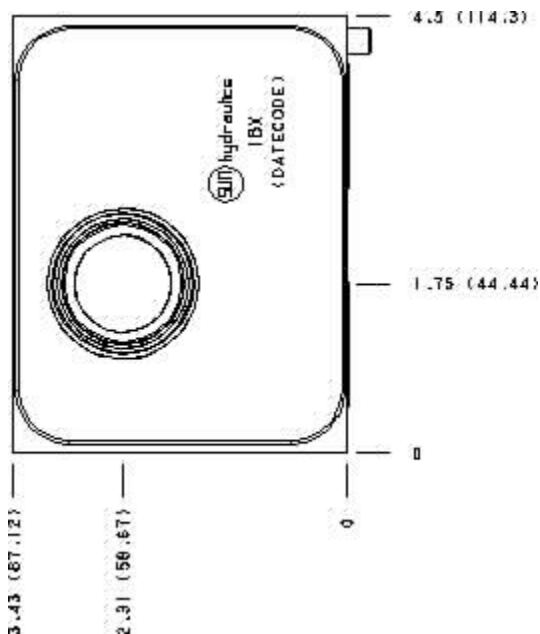
Functional Group:

Model:

Products : Manifolds : Sandwich : Flow Control : ISO 08 : Meter in on A and B

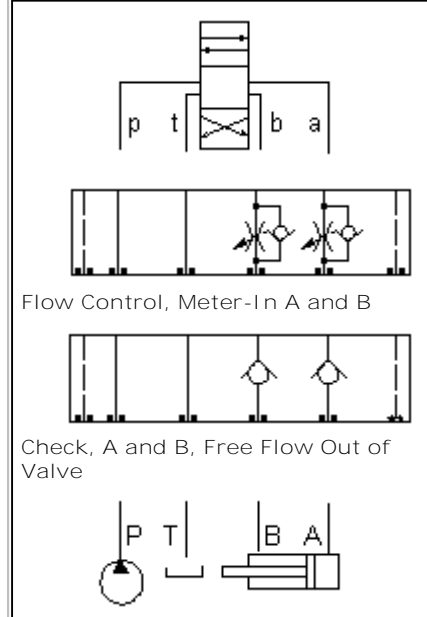
IBX

Face : 7



Cartridge extension measurement is to the centerline of the cartridge.

Function



Aluminum Body Pressure Rating: **3000 psi (210 bar)**

Ductile Iron Body Pressure Rating: **5000 psi (350 bar)**

Technical Data

	U.S. Units	Metric Units
Model Weight	9.53 lb.	4.32 kg.
Cavity	T-16A	
Body Features	Flow into workports A and B	
Body Type	Sandwich	
Interface	ISO 08	
Open Cavity Quantity	2	
Stack Height	3.44 in.	87 mm

Option Selection:

Model Code

Description

IBX	Aluminum, Buna-N, U.S. Units
IBX/S	Ductile Iron, Buna-N, U.S. Units
IBX/V	Aluminum, Viton, U.S. Units
IBX/Y	Ductile Iron, Viton, U.S. Units

Special Notes :

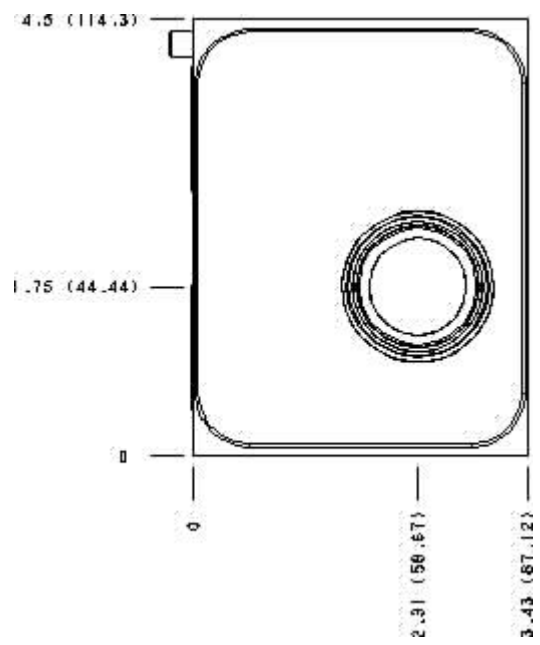
- For check valve application, use only with CX*A check valves - free flow nose to side.



Functional Group:
 Products : Manifolds : Sandwich : Flow Control : ISO 08 : Meter in on A and B

Model:
 IBX

Face : 5

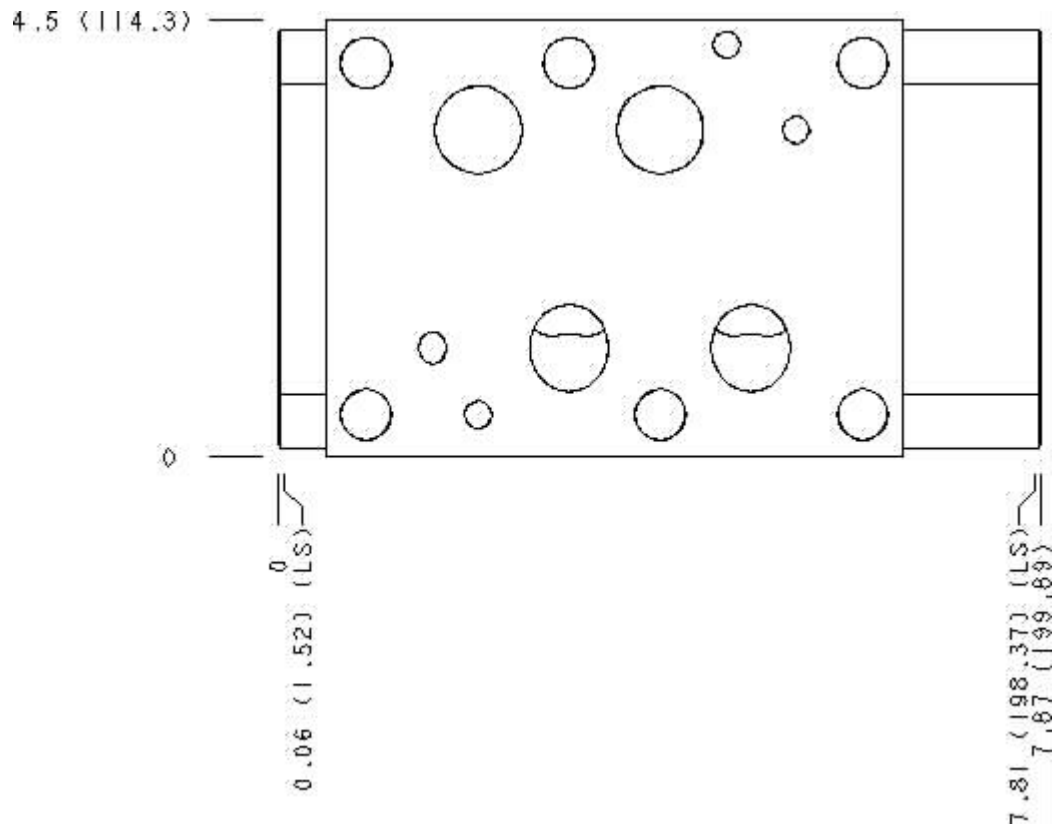


Cartridge extension measurement is to the centerline of the cartridge.



Functional Group:
 Products : Manifolds : Sandwich : Flow Control : ISO 08 : Meter in on A and B

Model:
 IBX

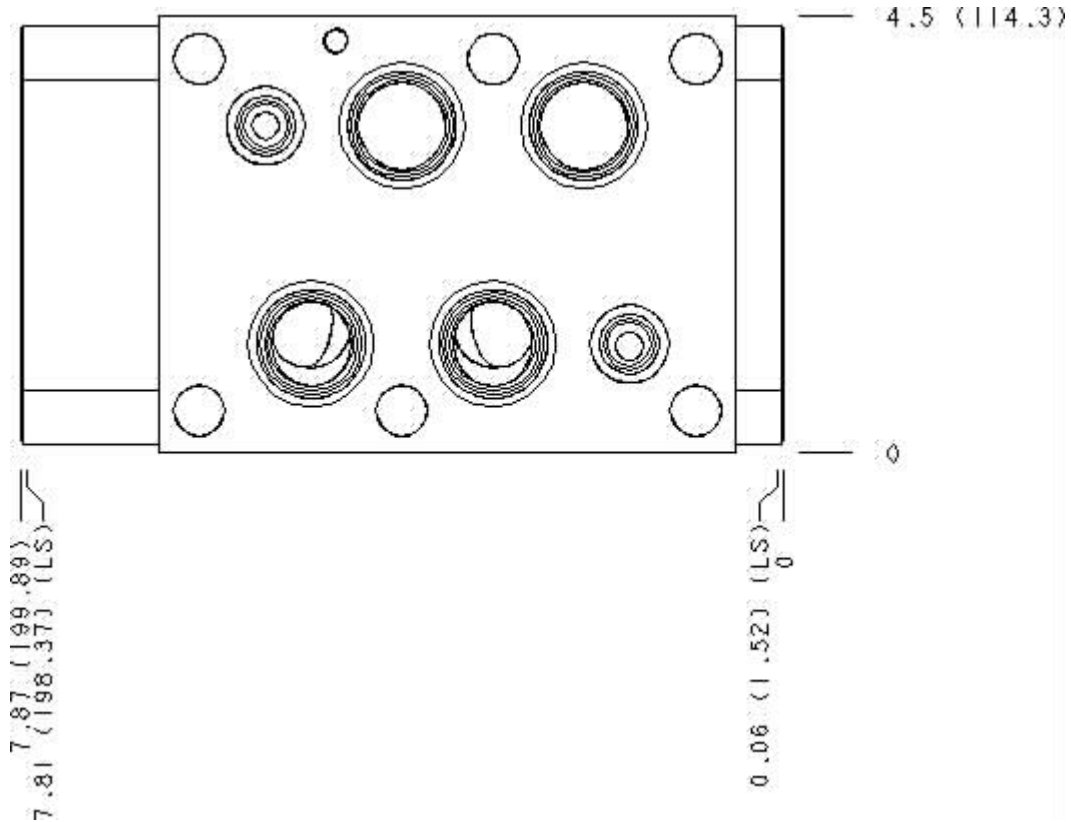


Cartridge extension measurement is to the centerline of the cartridge.



Functional Group:
Products : Manifolds : Sandwich : Flow Control : ISO 08 : Meter in on A and B

Model:
IBX



Cartridge extension measurement is to the centerline of the cartridge.



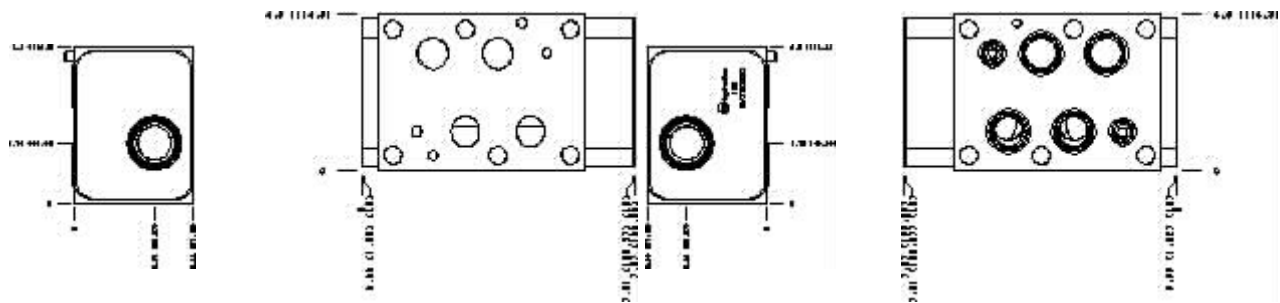
Functional Group:

Products : Manifolds : Sandwich : Flow Control : ISO
 08 : Meter in on A and B

Model:
 IBX

Projection Type

All Dimensions in Inches(mm)



All rights reserved.

[Terms and Conditions](#) - [Statement of Privacy](#)