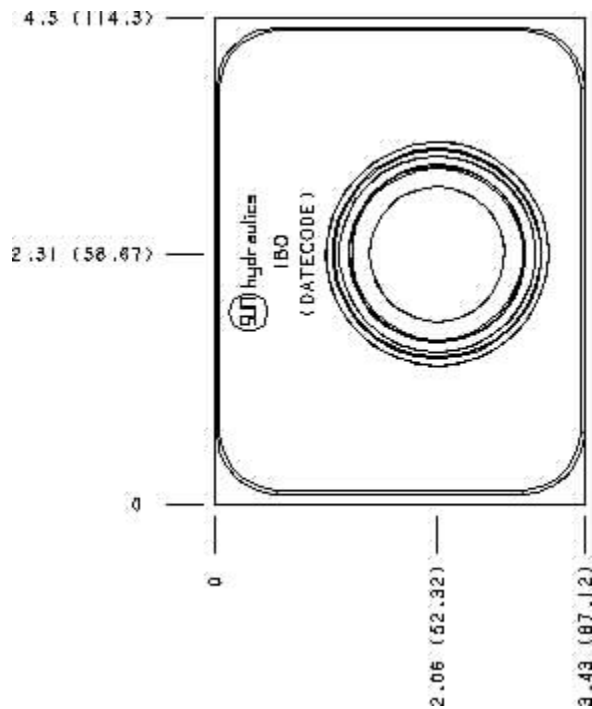


Functional Group:
 Products : Manifolds : Sandwich : Check : ISO 08 : On P high capacity

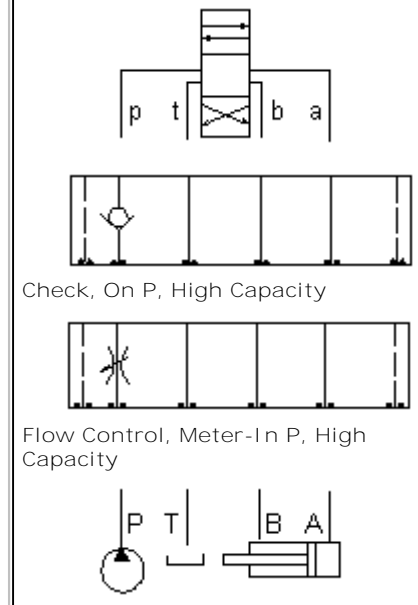
Model:
 IBO

Face : 7



Cartridge extension measurement is to the centerline of the cartridge.

Function



Aluminum Body Pressure Rating: **3000 psi (210 bar)**
 Ductile Iron Body Pressure Rating: **5000 psi (350 bar)**

Technical Data

	U.S. Units	Metric Units
Model Weight	8.28 lb.	3.76 kg.
Cavity	T-18A	
Body Features	Into P	
Body Type	Sandwich	
Interface	ISO 08	
Open Cavity Quantity	1	
Stack Height	3.44 in.	87 mm

Option Selection:

Model Code	Description
I BO	Aluminum, Buna-N, U.S. Units
I BO/S	Ductile Iron, Buna-N, U.S. Units
I BO/V	Aluminum, Viton, U.S. Units
I BO/Y	Ductile Iron, Viton, U.S. Units

Special Notes :

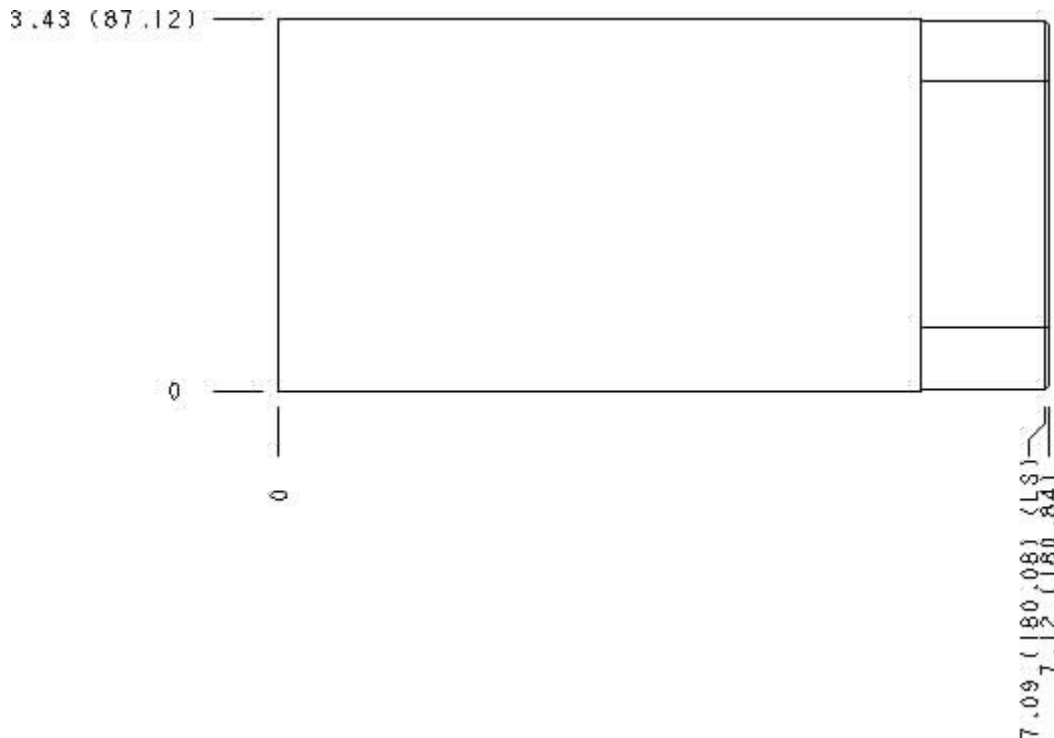
- For check valve application, use only with CX*A check valves - free flow nose to side.



Functional Group:
Products : Manifolds : Sandwich : Check : ISO 08 : On P high capacity

Model:
I BO

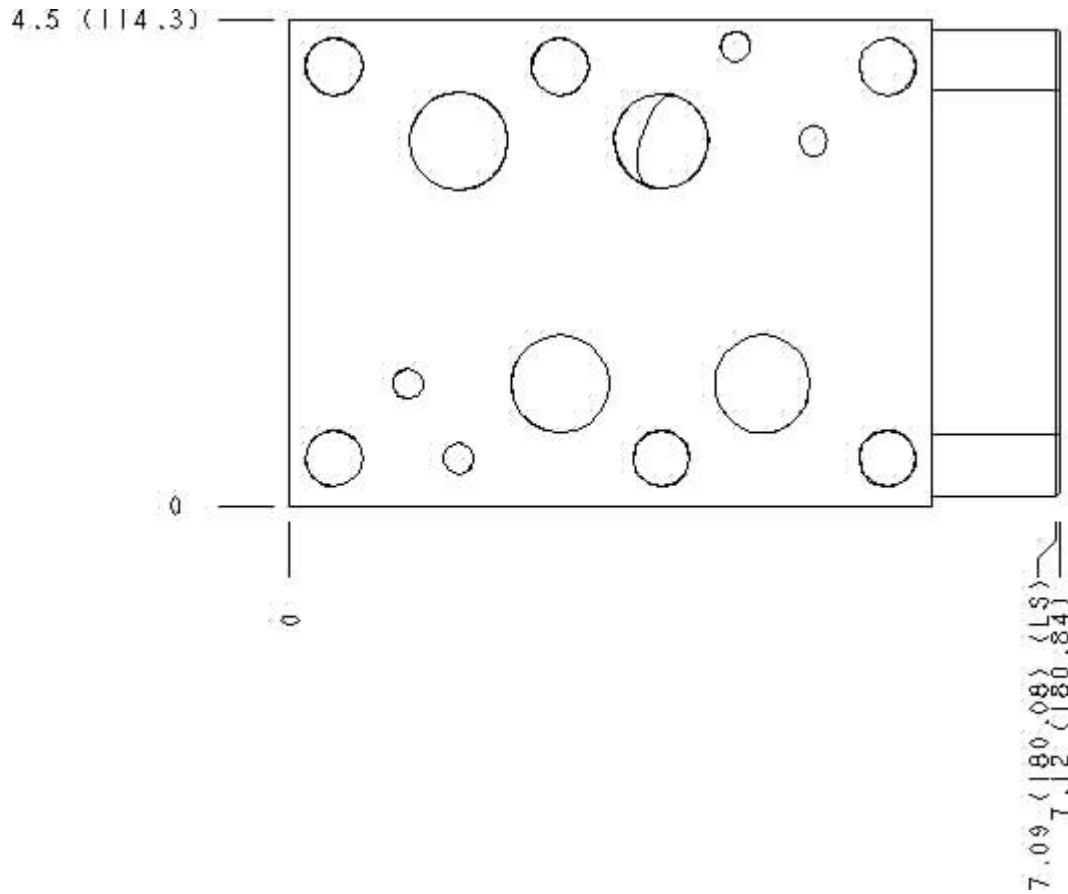
Face : 2



Cartridge extension measurement is to the centerline of the cartridge.



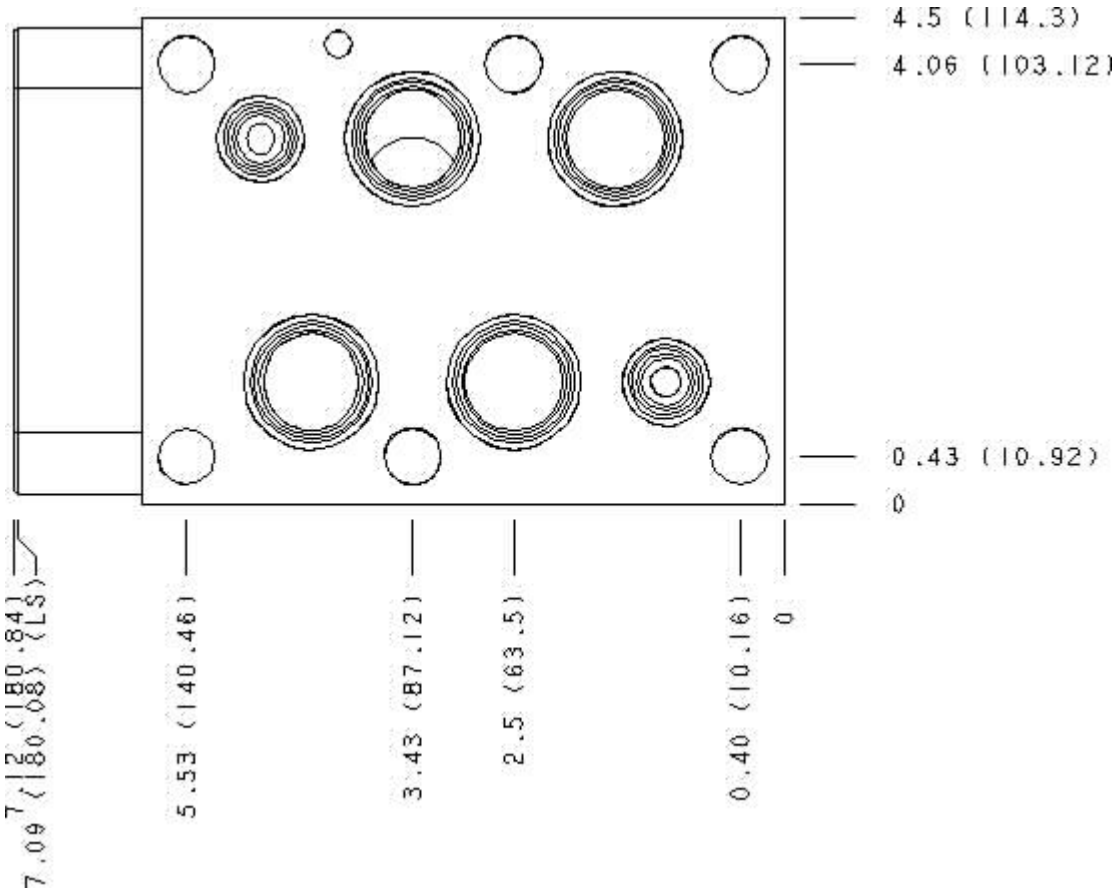
Face : 6



Cartridge extension measurement is to the centerline of the cartridge.



Face : 8



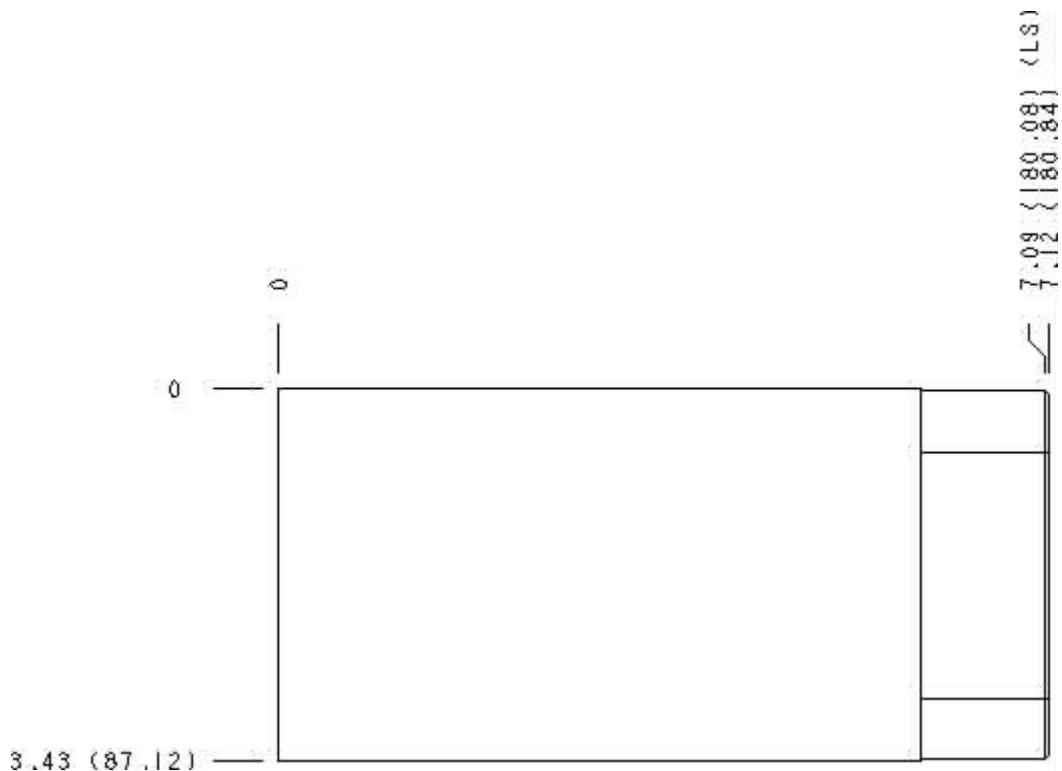
Cartridge extension measurement is to the centerline of the cartridge.



Functional Group:
 Products : Manifolds : Sandwich : Check : ISO 08 : On P high capacity

Model:
 IBO

Face : 10



Cartridge extension measurement is to the centerline of the cartridge.



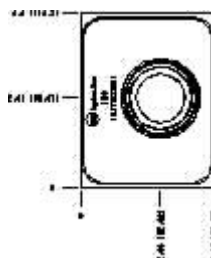
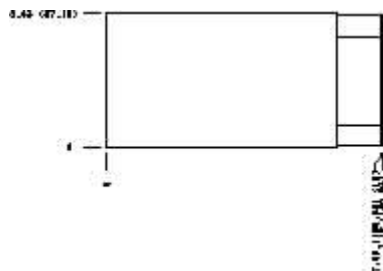
Functional Group:

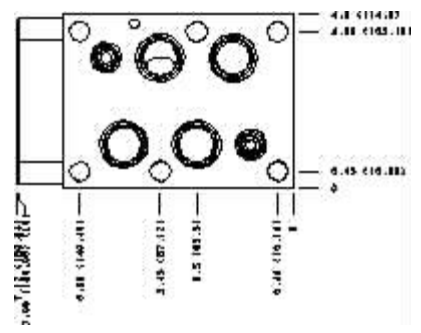
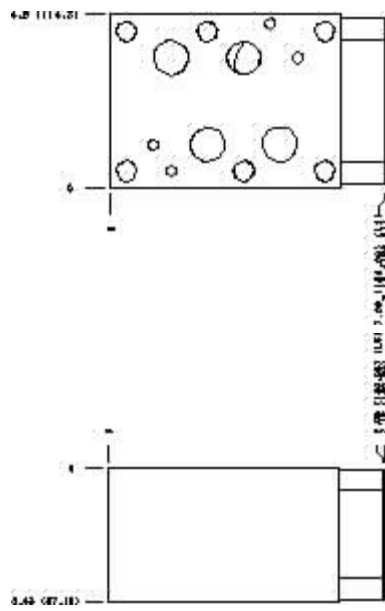
Products : Manifolds : Sandwich : Check : ISO 08 : On P
high capacity

Model:
I BO

Projection Type

All Dimensions in Inches(mm)





Copyright © 2007-2008 Sun Hydraulics Corporation.
All rights reserved.

[Terms and Conditions](#) - [Statement of Privacy](#)