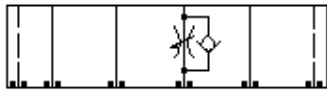
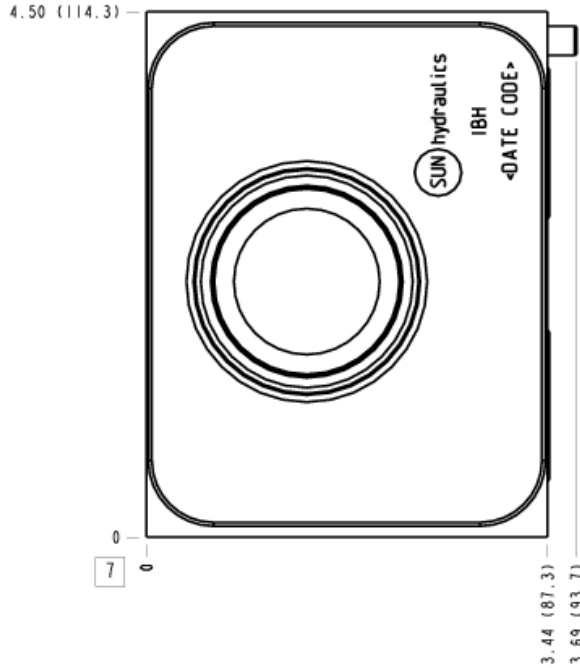
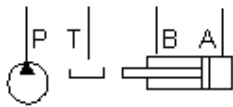


Check, On B, Free Flow Out of Valve, High Capacity



Flow Control, Meter-In B, High Capacity



TECHNICAL DATA

Body Type	Sandwich
Interface	ISO 08
Body Features	Flow into workport B
Stack Height	3.44 in.
Seal Plate Included (see notes)	No
Open Cavities	1
Cavity	T-18A
Model Weight	9.62 lb.

NOTES

- For check valve application, use only with CX*A check valves - free flow nose to side.
- Seal retainer plate is not required for this model.
- **Important:** Carefully consider the maximum system pressure. The pressure rating of the manifold is dependent on the manifold material, with the port type/size a secondary consideration. Manifolds constructed of aluminum are not rated for pressures higher than 3000 psi (210 bar), regardless of the port type/size specified.

INCLUDED COMPONENTS

Part	Description	Quantity
500-001-114	O-Ring	2
500-001-121	O-Ring	4
811-001-002	Locating Pin	1

CONFIGURATION OPTIONS

Model Code Example: IBH

MODIFIER

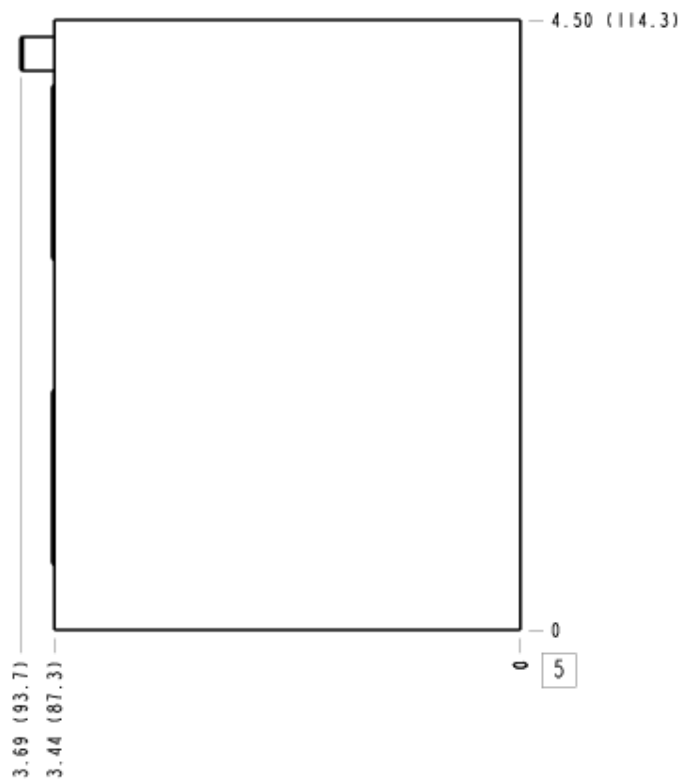
- 6061-T651 Aluminum, Buna-N**
- /11** 6061-T651 Aluminum, Buna-N, Clear Anodize - Per MIL SPEC 8625F Type II, Class I
 - /10** 6061-T651 Aluminum, Buna-N, Black Anodize - Per MIL SPEC 8625F Type II, Class II
 - /V** 6061-T651 Aluminum, Viton
 - /16** 6061-T651 Aluminum, Viton, Clear Anodize - Per MIL SPEC 8625F Type II, Class I
 - /15** 6061-T651 Aluminum, Viton, Black Anodize - Per MIL SPEC 8625F Type II, Class II
 - /S** 65-45-12 Ductile Iron, Buna-N, Chem. Black
 - /S3** 65-45-12 Ductile Iron, Buna-N, Trivalent Clear Zinc with Top Sealer
 - /Y** 65-45-12 Ductile Iron, Viton, Chem. Black
 - /Y3** 65-45-12 Ductile Iron, Viton, Trivalent Clear Zinc with Top Sealer

MANIFOLD FACES

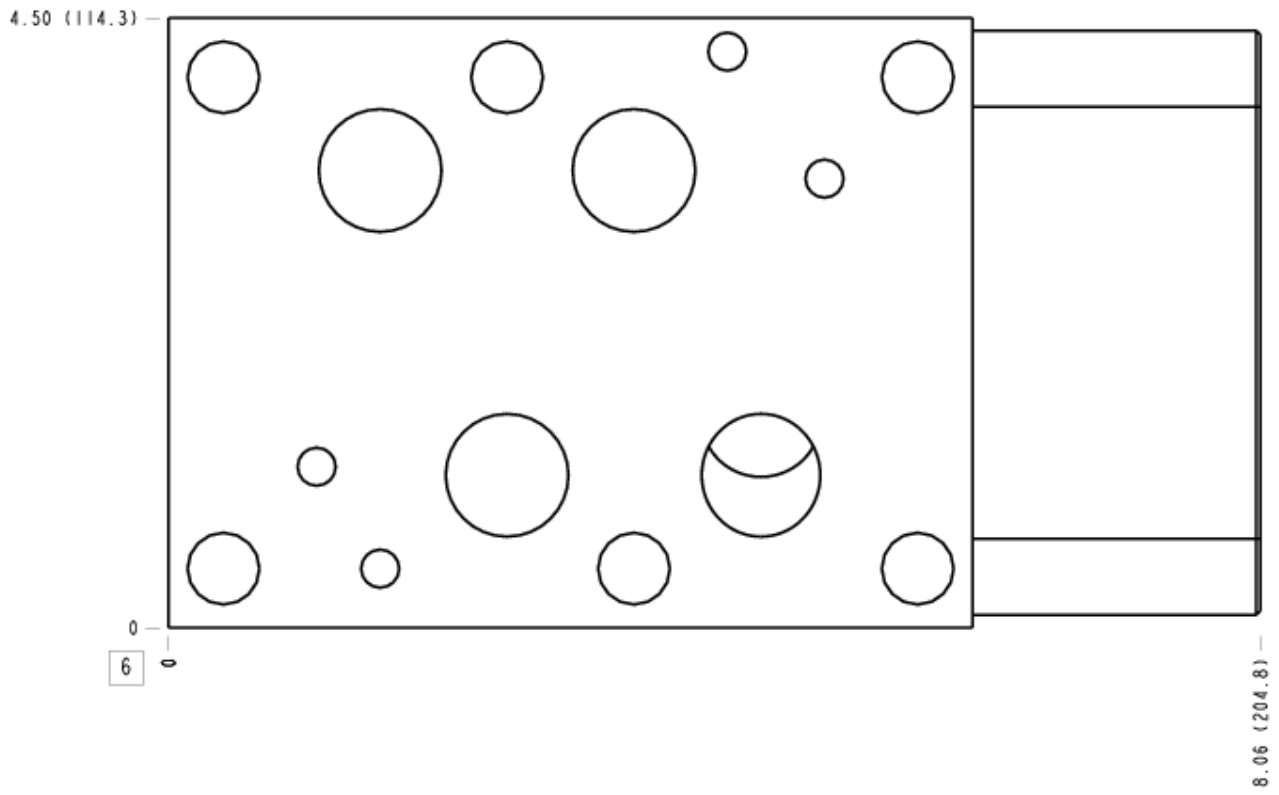
FACE GRID

1	2	3	4
5	6	7	8
9	10	11	12

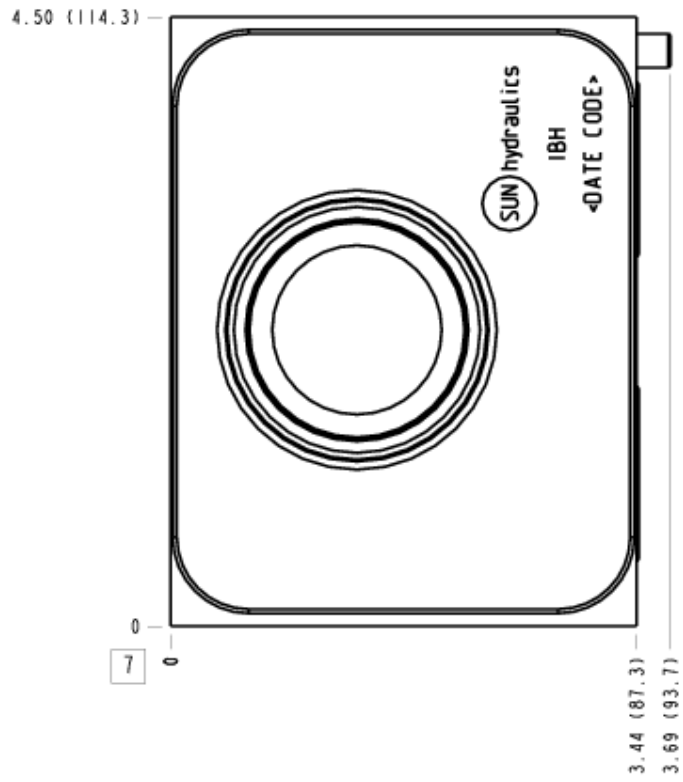
Face 5



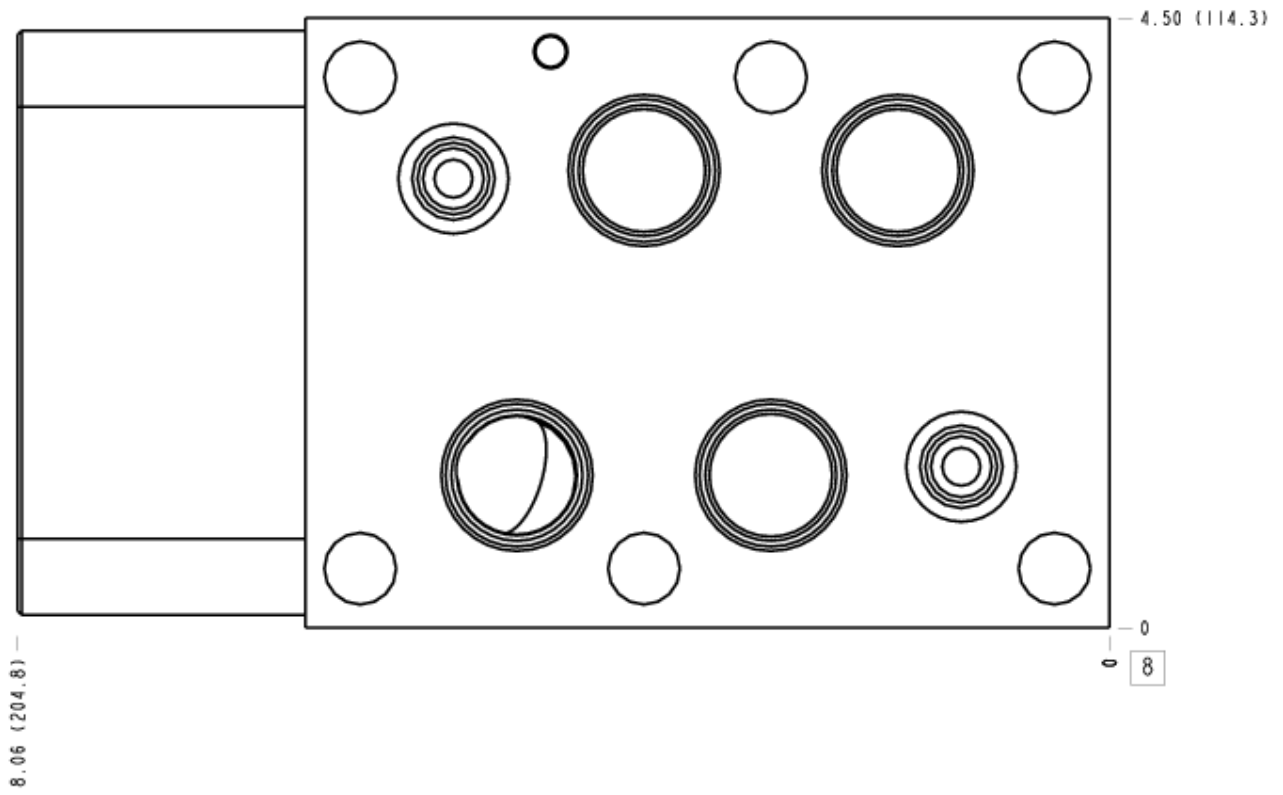
Face 6



Face 7



Face 8



Face 10

