

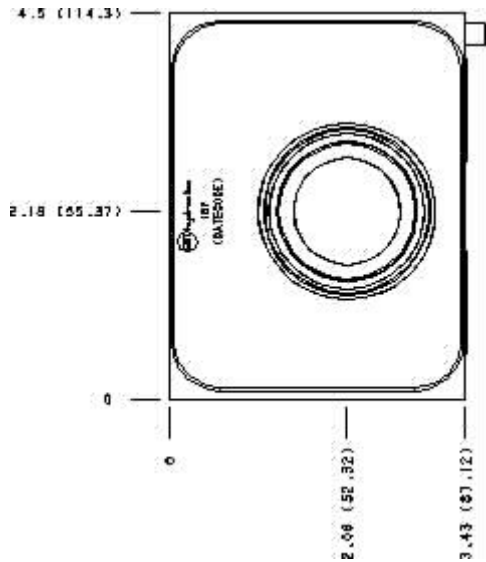
Functional Group:

Model:

Products : Manifolds : Sandwich : Check : ISO 08 : On B, free flow into valve high capacity

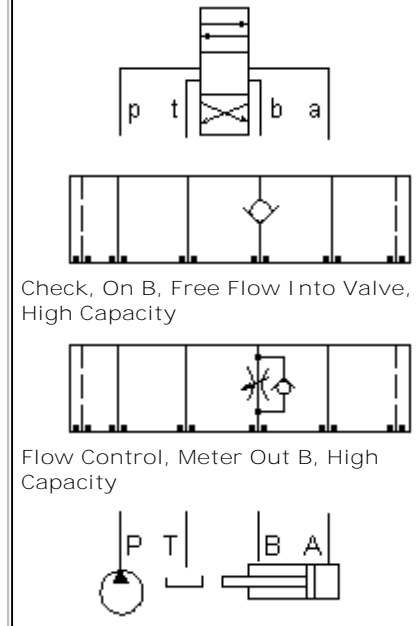
I BF

Face : 7



Cartridge extension measurement is to the centerline of the cartridge.

Function



Aluminum Body Pressure Rating: **3000 psi (210 bar)**

Ductile Iron Body Pressure Rating: **5000 psi (350 bar)**

Technical Data

	U.S. Units	Metric Units
Model Weight	9.62 lb.	4.36 kg.
Cavity	T-18A	
Body Features	Out of B	
Body Type	Sandwich	
Interface	ISO 08	
Open Cavity Quantity	1	
Stack Height	3.44 in.	87 mm

Option Selection:

Model Code	Description
I BF	Aluminum, Buna-N, U.S. Units

IBF/S	Ductile Iron, Buna-N, U.S. Units
IBF/V	Aluminum, Viton, U.S. Units
IBF/Y	Ductile Iron, Viton, U.S. Units

Special Notes :

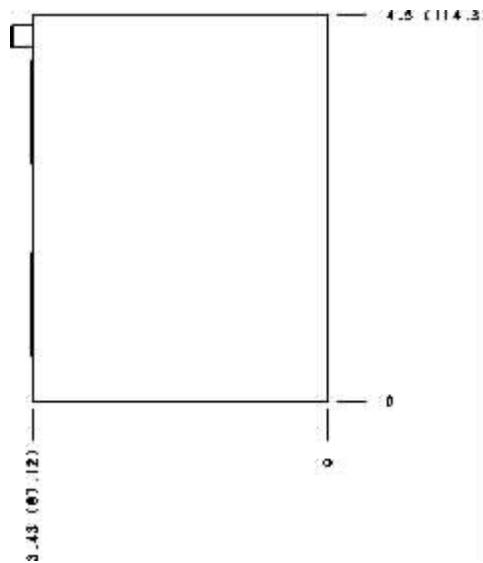
- For check valve application, use only with CX*A check valves - free flow nose to side.



Functional Group:
 Products : Manifolds : Sandwich : Check : ISO 08 : On B, free flow into valve
 high capacity

Model:
 I BF

Face : 5



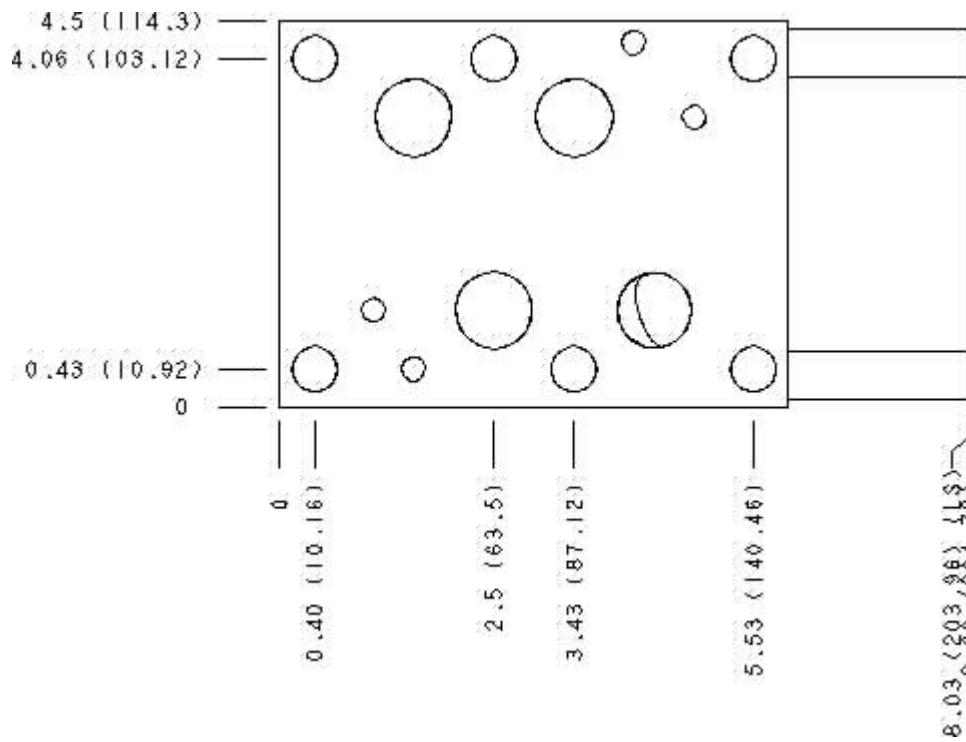
Cartridge extension measurement is to the centerline of the cartridge.



Functional Group:
 Products : Manifolds : Sandwich : Check : ISO 08 : On B, free flow into valve
 high capacity

Model:
 I BF

Face : 6



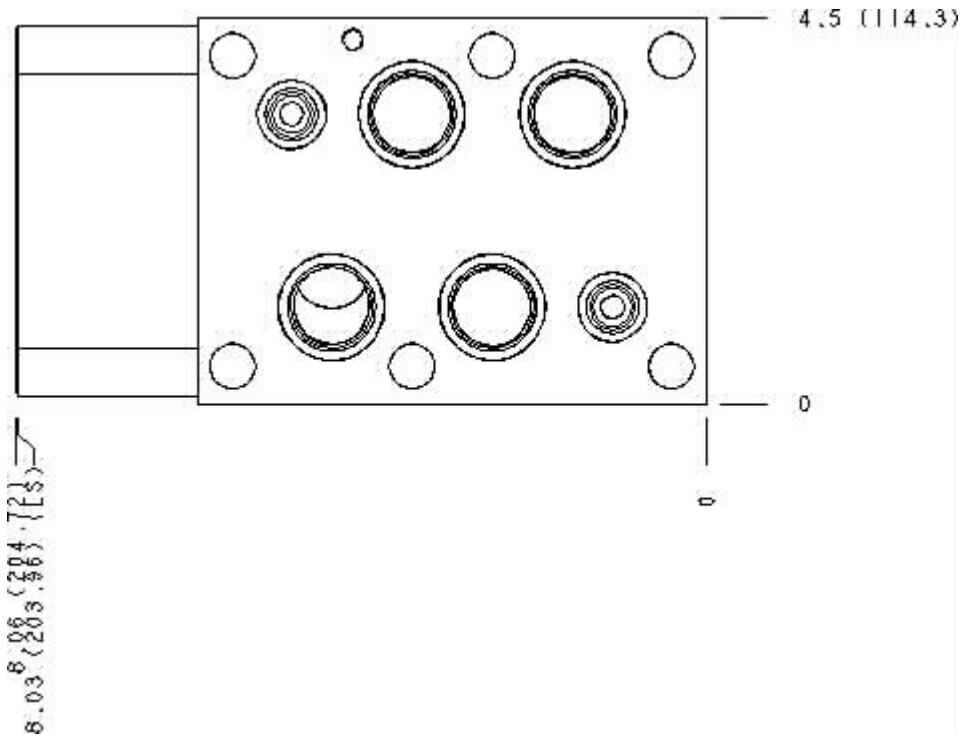
Cartridge extension measurement is to the centerline of the cartridge.



Functional Group:
 Products : Manifolds : Sandwich : Check : ISO 08 : On B, free flow into valve
 high capacity

Model:
 I BF

Face : 8



Cartridge extension measurement is to the centerline of the cartridge.



Functional Group:

Products : Manifolds : Sandwich : Check : ISO 08 : On
B, free flow into valve high capacity

Model:
IBF

Projection Type

All Dimensions in Inches(mm)

